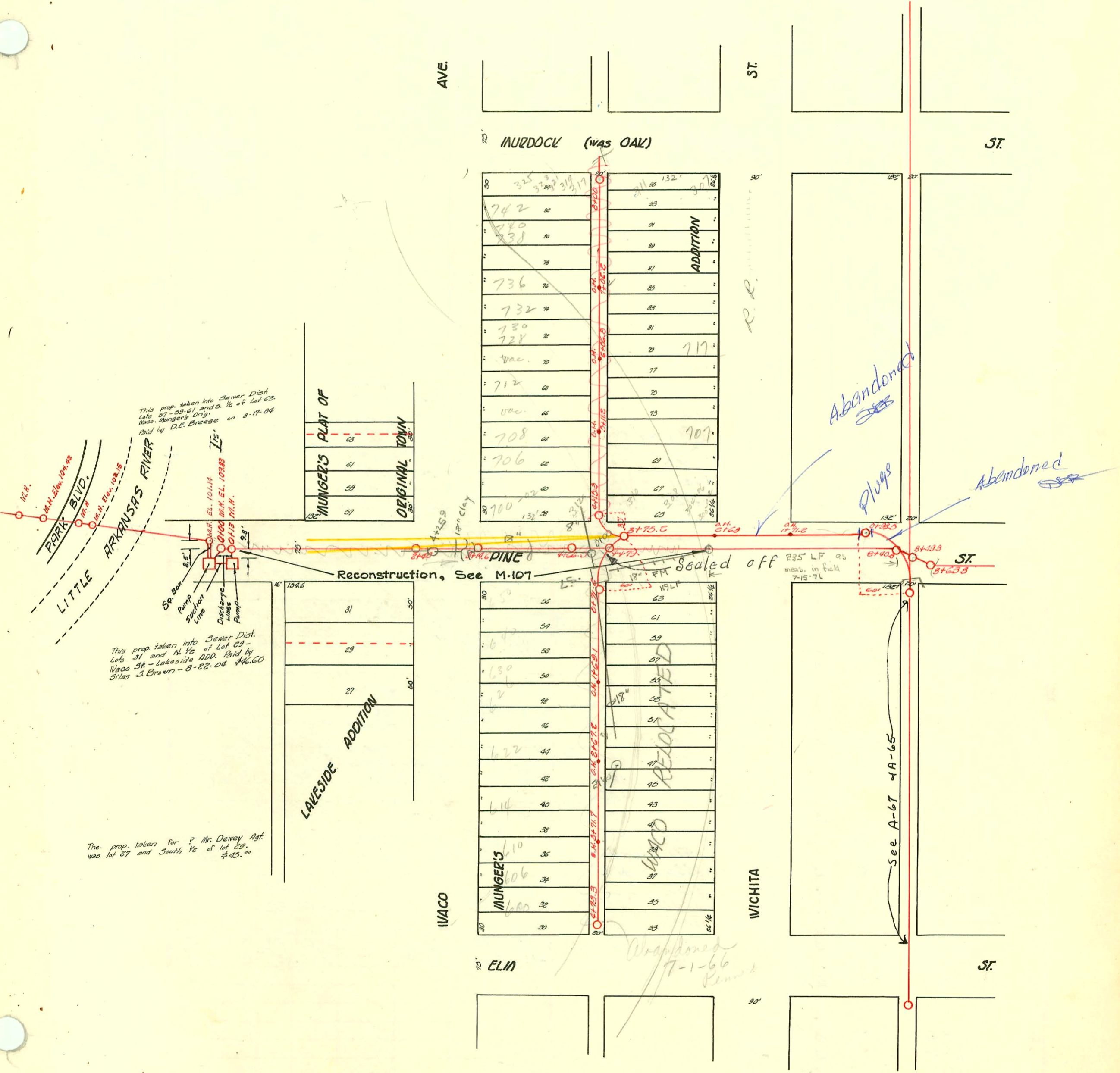


Plat 9-46

TRAP AREA

A 68

WEST JUB MAIN "A" ON PINE ST. & LAT. N. & S.
S.S. #1-1889



SCALE 1"=100'

CONSTRUCTION RECORD							SERVICE RECORD					
STATION	ELEVATION		Depth	MANHOLE	4-INCH "Y" BRANCHES		No. of Permit		House Number		DATE OF PERMITS	
	Ground	Grade			North West	South East	North West	South East	North West	South East	North West	South East
	112.24	111.08	1.16	+73.3 O.H.								
4	112.31	110.89	1.42	+71.7 O.H.	+66.0 +35.6 +05.0 +74.0	+68.0 +39.6 +18.4 +86.8	#1195 #1663		607 N. Wichita	9-20-00	5-23-24 5-17-60 11-13-23	
3	111.86	110.64	1.22	+67.8 O.H.	+43.3 +13.4 +83.6	+33.8 +07.3 +81.6	#1754 #1800 #28 #49		613 N. Wichita 615 Wichita 619 N. Wichita 622 Waco	10-4-01	12-7-23 1-31-24 8-3-95	
2	112.31	110.39	1.92	+69.1 O.H.	+50.5 +19.3 +76.6	+87.0 +01.5 +90.3	#1332 #487		622 N. Waco 631 N. Wichita	12-6-43 8-6-06		11-13-19
1	112.38	110.14	2.24		+59.3 +89.5 +01.5	+49.4 +49.4 +23.5	#1847 #87		Waco W.E. Waco Waco Waco	12-17-02 9-29-18 12-11-08		
0	112.42	110.07	2.35	+71.6	+75.6	+78.0	#3334 #103		639 N. Wichita SE corner Waco N. Wichita			12-12-50 8-14-03 12-28-23
8	116.07	111.62	4.45	+100 F.T.	+96.9 +71.4 +38.0	+98.9 +75.5 +49.5	See Book M-108 #29662 #118 #1850		SW corner of Waco Waco Waco Waco	(367-31) 6-29-66 9-22-03 7-2-80	12-23-71 1-21-29 12-15-23 7-6-00	
7	116.10	111.22	4.88	+102.2 O.H.	+108.3 +96.7 +79.5 +54.0	+84.6 +84.6 +73.5 +50.0	#4189 #117 #1078 #829		732 N. Waco Waco Waco Waco	7-24-65 4-9-16	7-6-00 9-29-25 4-15-24	
6	113.16	110.82	2.36	+106.8 O.H.	+82.9 +97.2 +93.2 +62.0	+84.9 +97.2 +70.0 +44.9	#4188 #4187 #1126 #66 #4185		732 N. Waco Waco Waco Waco Waco	9-24-65 10-20-25 9-24-65 3-1-09	7-6-00 9-29-25 4-15-24	11-21-23
5	112.25	110.42	1.83	+11.2 O.H.	+31.0 +01.7 +72.5 +43.3	+19.3 +92.1 +64.4 +39.3	#4184 #4195 #357 #1383 #18494		708 N. Waco 706 N. Waco Waco Waco 304 N. Waco 312 W. Waco 310 W. Waco	9-24-65 9-24-65 3-7-04	7-6-00 9-29-25 4-15-24	11-21-23
4	112.76	110.08	2.68	+15.3	+21.4	+19.7						
3	112.28	109.89	2.39	+75.2								
2	113.74	109.47	4.32	+68.0 O.H.								
1				+71.2 O.H.								
0	112.24	109.16	3.08	+88.5								
RIVERSIDE SEWER OUTLET												
0	115.82	110.76	15.1	+100								
2	113.45	109.43	4.02	+40								
3	113.52	109.44	4.08	+14.6								
4	113.86	109.10	4.76	+79.0								
8	113.46	108.42	5.04	+40.8								
	113.43	108.39	5.04	+49.8								
	113.37	108.32	5.25	+63.8								

C 10096-727 E. Brato Seal off - Al Henning 8-19-68

#137-120-756 N. Waco - 6-28-30 - V.H. Patterson
 #978-Private Line-306 W. Pine-7-12-38 - J.E. Lansdowne
 #1250-Private Line-703 N. Wichita-12-6-38 - J.E. Lansdowne
 #3510-130-307 N. Dur dock-5-20-47 - Johnson (Sibm Meter)
 #520-120-318-320 N. Elm-6-15-49 - Fzark McGoy
 #1133-120-207 N. Wichita-10-7-43 - Howard Sheppard
 #2913-120-322-24 W. Elm-12-23-49 - Tom McGoy
 #5446-Private Line-300-305 W. Pine-6-2-53 - Roy McGoy
 #5447- " " -304-306 " " -6-2-53- "
 #83195 Seal off - Private Line - 300-02 W. Pine - 2-29-65 (4+64.4)
 #83196 Seal off - " " - 308 W. Pine - " " - (4+64.4)

#12461 Seal off 707 N. Wichita Headquart 4-6-60
 #16647-610 N. Waco - Keith Willard - 2-13-63 (3+90.3)
 #35925-700-05 N. Waco - Seal off - Al Henning 6-29-66