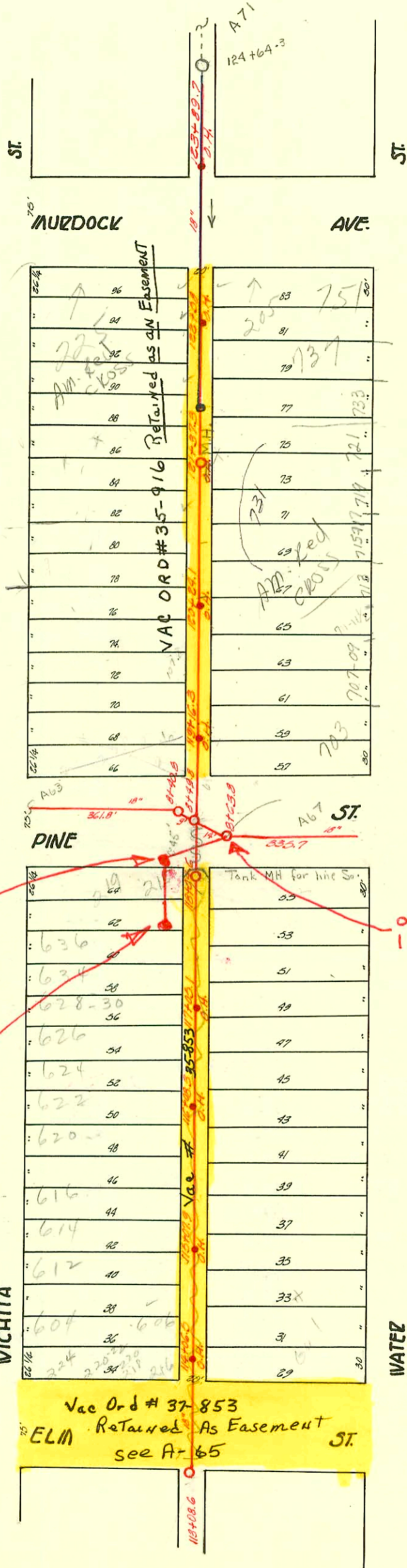


Plat 9-46

TRAP AREA

MAIN "A" FROM ELM ST. TO MURDOCK AVE.

S.S. #1-1889
1"=100'



Murdock San Sewer Replacement
from Wichtz to Wabash
#68-82707 OCA # 621763

751 Same Dept
205 Feb 29, 11, 83
737
733 - 10' of lat 75 - 10/28/77

S.S. for Sedgwick County
Adult Detention Facility
691 PPS

0+61 MH
TOP 113.46
FLOW 109.26 OUT
FLOW 109.36 IN

1+28.33 MH
TOP 114.00
FLOW 109.50

0+00 MH
108.93 FLOW IN

U. B. Carter

#91-36443-7 - 10/30/91 - 731 N water - Bob Fox (N/C) - (4" top 36' N of a MH - 4" PVC 40 - serves new add.)

CONSTRUCTION RECORD						SERVICE RECORD						
STATION	ELEVATION		Depth	MANHOLE	4-INCH "Y" BRANCHES		No. of Permit		House Number		DATE OF PERMITS	
	Ground	Grade			North West	South East	North West	South East	North West	South East	North West	South East
103	115.33	108.94	6.39	+78.7 O.H. +58.3 O.H.	+79.8 +53.4 +67.5	+77.0 +48.3	#1157 #47	#1052	Laundry 225 W. Murdock	751 Water	8-8-23 4-15-05	10-19-48 6-13-61 3-12-15
102	115.11	108.84	6.27		+00.5 +73.5	+17.5 +88.0	#475		1021 W. Murdock	733 Water	7-31-09	5-25-05 10-3-04
101	114.99	108.74	6.25	+37.3 120	+46.1 +22.5 +25.4	+57.3 +26.5 +91.0	#81 #343 #00781		1021 W. Murdock 231 Water	733 Water		7-17-90 8-4-76
100	114.48	108.64	5.84	+64.1 O.H.	+42.7 +16.1 +91.1	+30.9 +01.5	#879	#181 #105	726 N. Wichita	713 Water	6-7-23	8-29-73 2-27-73 8-16-06 5-29-93
119	114.23	108.54	6.14	+163 O.H.	+39.0	+43.0	#823	#308	218 W. (225) Pine	1037 Water	5-31-23	2-27-73 8-19-02
118	116.17	108.44	3.73	+04.6	+87.6 +83.8 +58.0	+83.6 +81.8 +53.9	#675 #380		636 N. Wichita	636 Water	10-3-45	11-15-14 3-27-73 6-11-17
117	110.68	108.34	2.34	+05.1 O.H.	+31.6 +03.0 +77.0 +53.0	+23.3 Seal +93.1 +66.8	#2315 #4179 #4193 #1757	#494	636 N. Wichita 634 N. Wichita 630 N. Wichita	636 Water	11-21-23 8-4-54 11-21-23	1-15-76 7-8-06 8-29-73
116	111.24	108.24	3.00	+08.3 O.H.	+26.5 +00.0 +73.5 +47.1	+32.6 +04.3 +75.5 +45.1	#84170 #1782		622 N. Wichita	631 N. Water	9-24-65 11-21-23	8-3-23 9-10-12
115	111.84	108.14	3.10	+07.9 O.H.	+22.6 +96.0 +69.0 +44.3	+14.5 +14.5 +83.5 +56.9	#4179 #1733 #1756	#416	616 N. Wichita 614 N. Wichita	621 N. Water	9-24-65 11-23-23	4-18-72 9-10-10
114	111.35	108.04	3.31	+06.5 O.H.	+17.2 +92.0	+21.2 +90.0	#4175 #1734	#485	604 N. Elm	604 Water	9-24-65 11-23-23	10-21-10
113	110.64	107.94	2.70	+08.6	+113+54.6		#324	#916	220 W. Elm	220 Water	7-1-46	10-19-17
0	113.46 113.43 113.57	108.42 108.39 108.32	5.04 5.04 5.25	+40.8 +49.8 +63.8								

NC #16634 225 W. Murdock (Done) - 7-17-16 (120+51.8) - 85.5' S of MH.
 #15095 - 225 W. Murdock - 11-22-45 - Henning (41.0 S - 120+96.3)
 C 75559 - 714 N. Wichita - 11/30/79 (9+91.8) 119+16.3 O.H. - 142' North
 #113 - Tap - 215 W. Murdock - Dunaway - 8-23-23
 #30 - Used old connection - 225 W. Murdock - 4-18-33 - Ray Bryant
 #58 - Used old connection - 701 N. Water - 6-21-34 - Walter & Miller
 #1379 - Tap - 709 1/2 N. Water - 2-3-47 - H.P. Dunaway - 53253 - 22 Henning - 1-20-76 deal off
 #868 - Set up - 620 N. Wichita - 5-22-56 - Frederic Pibg
 #3495 - Tap - 215 W. Pine - 12-26-50 - Millard Stiger
 #160 - Tap - 220 N. Elm - 2-23-52 - Frederic Pibg
 #1240 - Set up - 220-24 W. Elm - Al Henning - 9-29-65 (113+72.6)
 #5219 - Deal off - 630 N. Wichita - Al Henning - 13-9-66
 #5219 - Deal off - 216 W. Pine - Al Henning - 3-9-66
 #4182 - Set - 626 N. Wichita - Al Henning - 9-24-65
 #91 - 30337 - 7 - 8/20/91 - 225 W. Murdock - Fox Pibg -
 Dump station for Red Cross - (Secondary Add 707 N. Main)
 (City tap 296' S. of MH on Alley N. of Murdock - 6" SAR 35)