

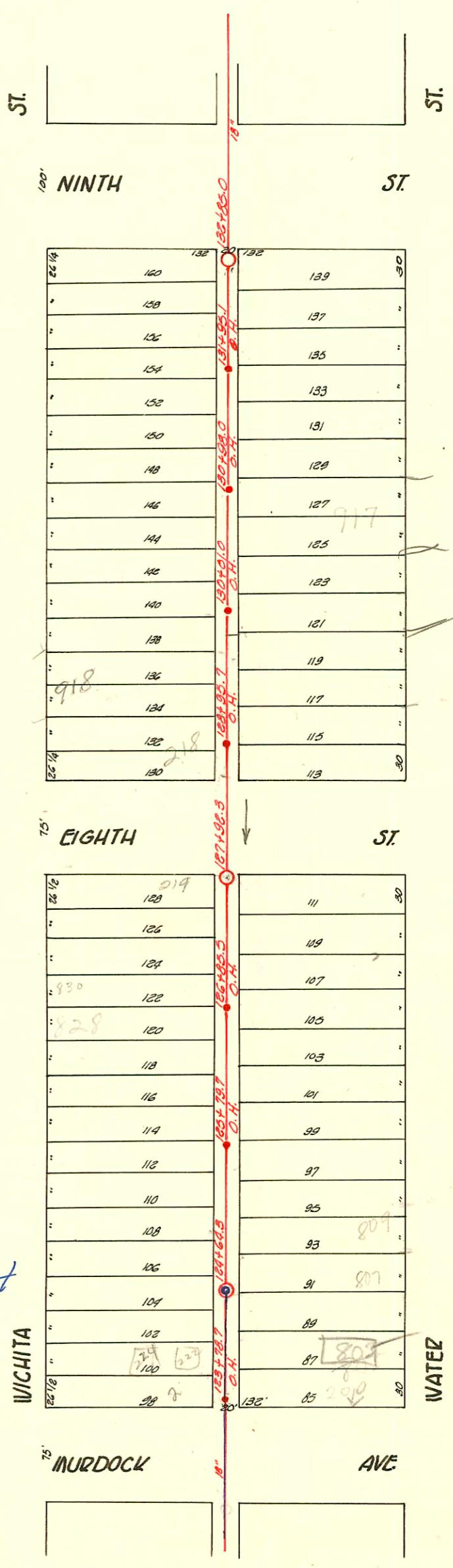
MAIN "A" FROM OAK ST. TO PARK ST.
S.S. #1-1889

TRAP AREA

Plat 9-46

M.H. UNDER COAL SHED 15'
SOUTH OF PROPERTY LINE.

Murdock San. Sewer Replacement
from Wichita to Wabosh
468-82707 o.c. 621763



CONSTRUCTION RECORD

SERVICE RECORD

STATION	ELEVATION		Depth	MANHOLE	4-INCH "Y" BRANCHES		No. of Permit		House Number		DATE OF PERMITS	
	Ground	Grade			North West	South East	North West	South East	North West	South East	North West	South East
				+85.0	+51.9			C75218	#25	942 N. Wichita		11-6-79
					+64.0	+66.1				Record		9-20-01
132	115.51	109.84	5.67		+37.0	+39.0						8-15-57
			131	+95.1	0.4	+85.3	+87.3	#5105 #1350 #2044		934 N. Wichita 932 N. Wichita		9-12-23
					+59.0							12-16-82
					+33.0	+57.0			#258	928 N. Water		5-9-75
131	115.47	109.74	5.73		+106.5	+86.6						6-8-04
				+98.0	0.4	+96.0						
					+79.7	+67.4			#930 #1164 #42918	930 N. Water		8-4-23
130	114.73	109.64	5.09	+01.0	0.4	+87.5	+11.0	#1060 #922 #518		926 N. Water		7-18-23
					+99.0	+84.5			#24 #920 #106	924 N. Wichita 922 N. Wichita		5-15-25
				129	+74.4	+56.0			#648 #1758	922 N. Wichita		1-15-24
				129	+48.0	+29.0				Record		5-23-22
129	114.42	109.54	4.88		+23.0	+08.2			#1061	212 N. Water		12-26-22
				128	+95.7	+98.0						2-1-24
128	114.90	109.43	5.47	+92.3		+73.6	+71.6	#653	2000-11580 2002-01848	918 N. Wichita 917 N. Water		7-18-23
					+75.3	+73.3			#2356 #1380	210 N. Water		7-10-00
					+48.0	+46.0			#181 #147	839 N. Water		7-29-26
127	114.78	109.34	5.44		+19.0	+23.0			#494 #391	840 N. Wichita 837 N. Water		8-29-22
				126	+85.5	+92.4						2-3-44
				126	+68.8	+64.8			#1053 #2251	828 N. Water		7-7-52
					+42.2	+32.0						1-4-23
126	115.62	109.24	6.38		+15.3	+00.8			#227	825 N. Water		3-14-24
				125	+79.7	+90.5						6-24-09
					+65.5	+69.5						2-10-59
					+41.0	+37.0						12-25-06
125	115.92	109.14	6.78		+14.3	+07.9			#2019 #264 #39	812 N. Water		6-7-07
				124	+64.3	+85.0			#284 #185	809 N. Water		12-8-20
					+58.0	+76.5			#760 #191	804 N. Water		8-22-06
					+33	+43.1						12-3-09
124	115.13	109.04	6.09		+06.3	+12.4			#149	803 N. Water		2-18-04
123				+78.7	0.4	+83.3	+81.3					5-17-66
												11-24-03
												5-2-06

3348 222 W. Murdock #201 5-26-81 Dennis Moon (127+92.3 - 73.3 S. of 111 N 127+19.0)

C73325 - 216 W. Murdock - 7-30-79 - (124+34.7)

C61543 - 926 N. Water - 9-24-80 (Hemming) (129+06.7)

C67205 - 222 W. Murdock - A. Moon - 7-5-78 (125+29.4)

C62469 (942 N. Wichita) - 8-9-77 - (132+50)

C56563 - (907 N. Water) - 7-6-76 - J. Jones

C36234 - (922 N. Wichita) - 12-4-72 Joe Spaulding (128+93.4)

C27771 - (917 N. Water) Seal off 9-8-71 - Al Hemming

C24054 - (218 N. Water) - 4/30/71 - Arthur Ray - (129+02.3)

#375 & #376 - 909 1/2 E 919 N. Water - 4-22-22 - Golden Rule

#2813 - Tap - 928 N. Wichita - 3-13-46 - H.P. Duraway - 6-27-73 (131+77)

#5657 - Seal off - (222 N. Murdock) - Al Hemming - 5/17/66

#5658 - Seal off - (204 N. Murdock) - Al Hemming - 5/17/66