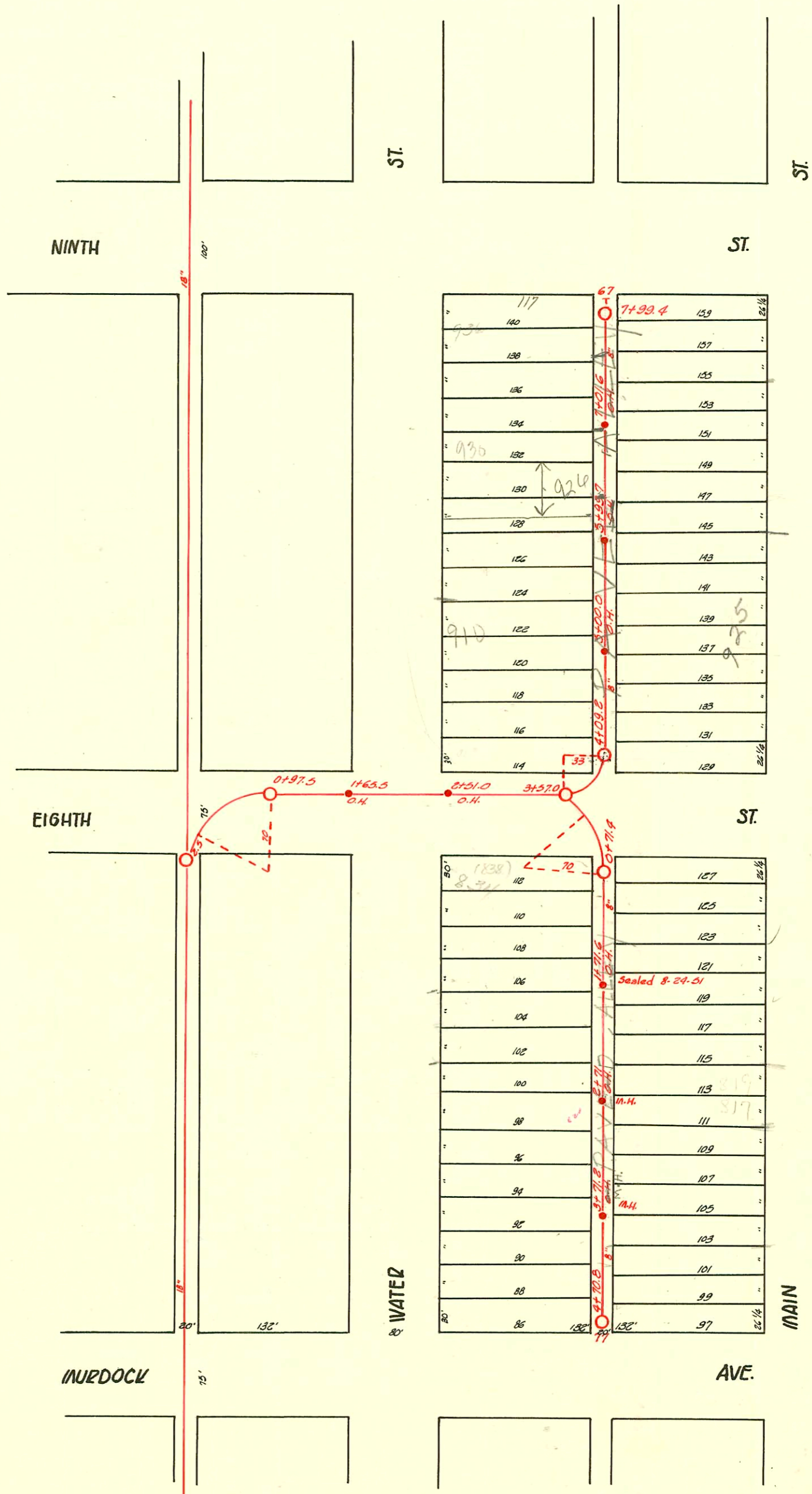


Plat 9-46

TRAP AREA

EAST SUB MAIN "A" ON EIGHTH ST. & LAT. N. & S.

S.S. #1-1889



- 99-000966-7 1/22/99 926 N Water - Jerry Forshoe - 4" sch 40 - 6" Predco 30' N of 10H 3+99.7 (4+29.7) 1-624 Bushing - 1V22, 1H22, 4V45 (TRAP) (CITY REPAIR)
- 98-7139-7 - 5/1/98 926 N Water - Jerry Forshoe - 4" sch 40 - Donut into Bldg side of TRAP - 1 Twin C.O. 1-22" H&K2.
- 92-4865-7 4/7/92 924 N Water - Henning - 6" clay slo 10' from wye and 10' W. of Manhole, no alley cut.
- 92-28594-7 9/14/92 924 N Water - A. Telby - 4" SDR 35 Connected to SDR 35 Line at edge of alley. Old Conn into MH 5+99.7 no alley cut.

CONSTRUCTION RECORD

SERVICE RECORD

STATION	ELEVATION		Depth	MANHOLE	4-INCH "Y" BRANCHES		No. of Permit		House Number		DATE OF PERMITS	
	Ground	Grade			North West	South East	North West	South East	North West	South East	North West	South East
	114.89	112.00	2.89	+70.8		+66.6						
4	114.88	111.88	3.00	+71.2	+61.5 +40.8 +89.5 +99.1 +69.8 +39.6	+66.6 +37.6 +09.8 +83.0 +57.8 +31.5	#61 #1785 #106 #1785	824 N. water 807 N. main 701 N. water	811 N. 815 N. 837 N.	8-11-52 6-18-17 4-8-08	1-29-70 8-14-08 9-27-88	
3	114.70	111.57	3.13	+71.0	+40.3 +79.5	+03.3 +77.5	#367 #59 #1667	830 N. water 800 N. water	815 N. 837 N.	6-16-09 11-13-83	8-15-10 9-5-95 7-15-81	
2	111.34	111.38	4.08	+71.6	+48.8 +18.0 +87.7 +59.5	+86.0 +00.8 +73.9 +48.5	#1648 #133 #1615 #1713 #340	824 N. water 827 N. main 830 N. main	822 N. main 833 (K) addition	11-9-83 7-11-08 11-21-85 9-30-13	3-10-11 9-17-82 6-7-56 11-22-88	
1	114.91	111.07	3.84	+71.4	+40.4 +96.6	+88.5 +76.4	#370 #310	834 N. water	830 N. main	8-20-71 3-4-87	6-7-56	
0	114.50	111.00	3.50	+71.4	+75.1	+76.4	#370 #26702					
	114.75	111.89	2.86	+99.4 FT.	+96.6 +98.6 +59.1	+96.6 +63.1 +37.5	#243 #604 #7004 #41824371 #434	839 N. main 839 N. main	941 N. main 939 N. main	10-31-69 6-14-60 4-25-10 5-8-01	10-31-69 7-19-19 8-27-17 1-11-58 7-16-18	
7	114.31	111.64	2.67	+71.6	+89.5 +99.7 +69.8 +37.8	+11.9 +85.5 +57.4 +38.8	#398 #67 #55	830 N. water 824 N. water	931 N. main	6-13-17 5-12-06 8-25-09	11-19-09	
6	114.46	111.39	3.07	+99.7 O.H.	+408.0	+06.0	#55	924 N. water		9-14-72		
5	114.44	111.14	3.30	+100.0 O.H.	+78.0 +48.8 +18.8 +88.3 +58.9 +86.5	+54.8 +88.3 +08.0 +76.3 +50.9 +88.6	#153 #821 #1180 #1343 #1182 #840	925 N. main 925 N. main 910 N. water 908 N. water 906 N. water	925 N. main 925 N. main 925 N. main 925 N. main 925 N. main	3-7-88 10-22-06 8-4-19 1-11-80 8-4-19 4-21-10	9-5-74 4-11-84 7-24-93 10-18-88 4-26-70 5-18-06	
4	114.33	110.98	3.41	+09.8	+14.0	+13.0						
3	114.89	110.88	3.47	+57.0								
2	115.07	110.43	4.64	+51.0 O.H.								
1				+65.5 O.H.								
0	114.48	110.18	4.24	+97.5								

11769 - 828 N. water - 8-15-84 - Al Henning - 3+71 2N (106.0 N) (2765.2)

Tap 02076 934 N. water - 12/12/80 Jim Jorga

Tap 00451 934 N. water - 6-4-80 Henning (5/0 West edge of Parcel 81 by 90' S of M.H.) (7+59.4)

Tap C41167 - 816 N. water - 9/11/73 - Henning (4+22.3)

029688 - 936 N. water - seal off - Al Henning 12-27-71

06996 - 921 N. main - seal off - Al Henning 2-23-68

06442 - 921 N. main - seal off - Al Henning 10-4-66

#765 - Tap - 815 N. Main - 8-27-48 - Frederick Pibg.

#453 #811 - Tap - 117 N. 9th - 7-9-49 - Hadley Creelmore - Al Henning could be 115' W. 9th

#109 - Tap - 816 N. Water - 3-11-50 - Wichita Pibg. Co.

#5511 - Tap - 900 N. Water - 8-13-51 - Frederick Pibg. Co. C22096. Seal off - Al Henning 12-9-70 (4+22.2)

#2665 - Tap - 101 N. 8th - 10-11-50 - Frederick Pibg. Co.

#10231 del bon 9 way 930 N. water - Frederick Pibg. 5-6-59

10312 del bon 8 way 930 N. water - Frederick Pibg. 5-5-59 6+93.4

seal off 02902 826 N. water - JCS rec'd - 12-23-71

C49485 - 819 N. main - Seal off - 5-14-75 - J.C. Severa

Tap C49541 - 905 N. main - 5-16-75