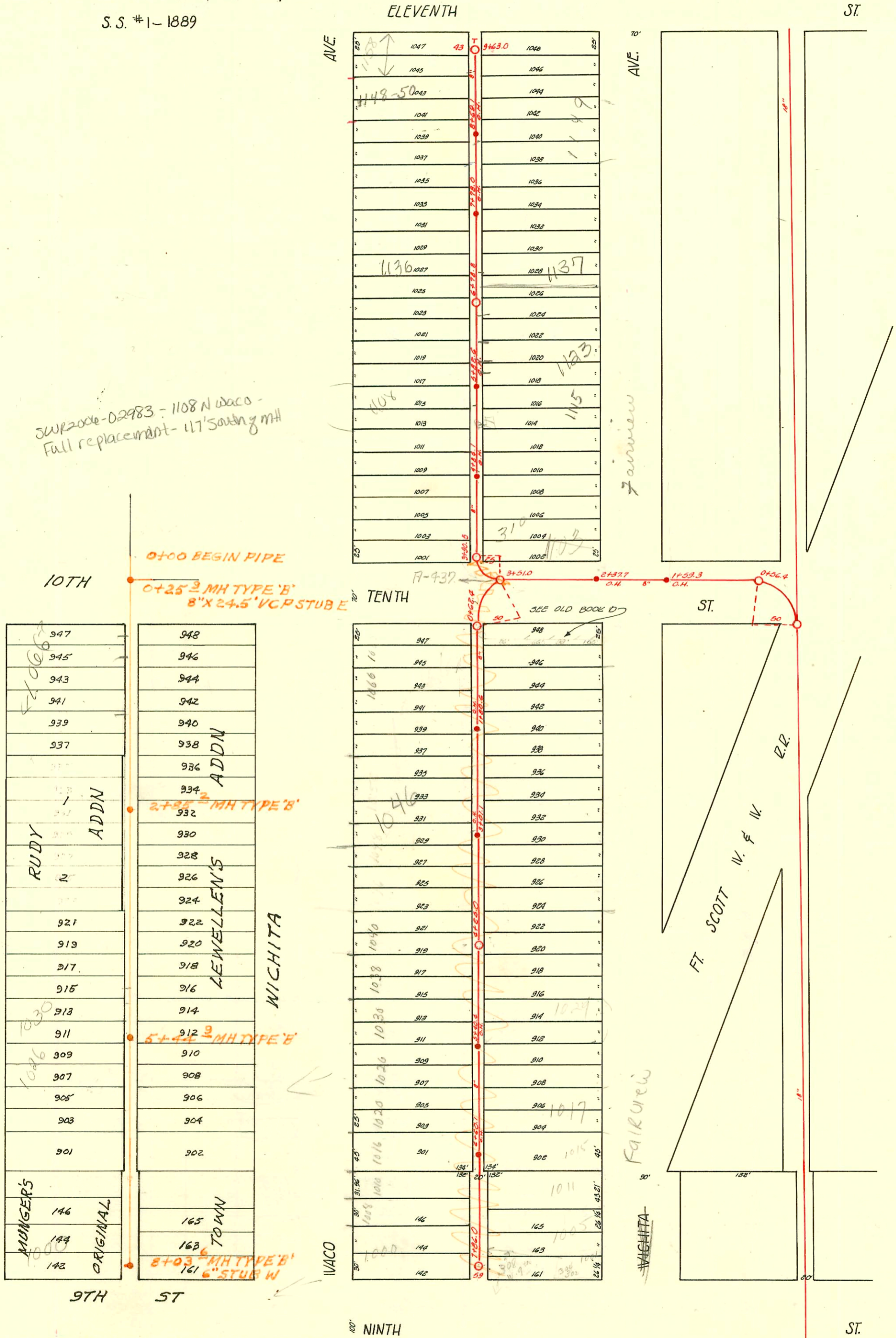


Plat 9-43

TRAP AREA

A 75

WEST SUB MAIN "A" ON TENTH ST. & LAT. N. & S.  
S.S. #1-1889



SWR 2002-02983 - 1108 N Waco - Full replacement - 117' South of MH

947	948
945	946
943	944
941	942
939	940
937	938
	936
	934
	932
	930
	928
	926
	924
	922
	920
	918
	916
	914
	912
	910
	908
	906
	904
	902
	165
	163
	161

947	948
945	946
943	944
941	942
939	940
937	938
935	936
933	934
931	932
929	930
927	928
925	926
923	924
921	922
919	920
917	918
915	916
913	914
911	912
909	910
907	908
905	906
903	904
901	902
1008	1010
1006	1008
1004	1006
1002	1004
1000	1002

RECON PORTION W SUBMAIN A SS N#1 IN ALLEY BTW WACO & WICHITA 9TH-10TH BUILT BY: W.B. CARTER CONST. CO PROJ. NO 542-80-245-80006-000-000-001 BOOKED 9-19-81 FROM AG 10

9/0 2001-02116-8123101-1123 Fairview - Wichita P1bg - 5/0 68'S of MH 6+78.8 (6+10.8)  
Reconnect/Relocate 2001-02005-1123 N Fairview Ave - 8/14/01 - Wichita P1bg - 4" sc#40 2x45, 1 twin eo, need new trap per Inspector Young - 2123101 did 4" Predco 85' S of MH 6+78.8 (5+93.8) 1V45 - Needs house trap - 812861 1 house trap  
SWR 2002-02521 9/12/02 1066 N Waco (Sugar Beet) Irwin P1bg  
SWR 2002-02520 9/12/02 1066 N Waco (grease lined) Irwin P1bg - Tied back to 6" w/6x4 Ferro, 3 twin eo, traps 1000 gal grease interceptor, 1W45, 3H45, 2H22, 2V22

CONSTRUCTION RECORD

SERVICE RECORD

STATION	ELEVATION		Depth	MANHOLE	4-INCH "Y" BRANCHES		No. of Permit		House Number		DATE OF PERMITS	
	Ground	Grade			North West	South East	North West	South East	North West	South East	North West	South East
8+00	117.98	114.41	3.6	8+03.6								
	118.15	114.40	3.7	+86.0 FT.								
7	118.23	114.14	4.33									
		113.90		+60.1 O.H.								
6	117.97	113.88	4.32									
		113.65										
5	118.63	113.74	4.9	5+44.9								
	118.28	113.40	4.88									
		113.62										
4	117.96	113.36	4.81									
		113.15										
3	118.45	113.10	5.55	+0.1 O.H.								
		112.90										
	118.94	113.07	5.9	2+85.2								
2	118.24	112.85	5.59									
		112.65		+80.6 O.H.								
1	118.00	112.59	5.60									
		112.40										
0	See 0+00 Below	118.25	5.79	+68.4								
		118.25		+68.4								
				+63.0 FT.								
9	117.11	113.45	3.66									
				+62.1 O.H.								
8	117.00	113.20	3.80									
				+78.0 O.H.								
7	118.56	112.95	5.61									
				+78.8								
6	118.48	112.70	5.78									
				+82.6 O.H.								
5	118.29	112.45	5.84									
				+84.1 O.H.								
4	118.47	112.32	6.15	+90.5								
3	117.89	112.10	5.79	+51.0								
2	117.84	111.70	6.14	+37.7 O.H.								
				+59.3 O.H.								
1	117.70	111.45	6.25									
0	117.85	111.34	6.51	+56.4								

C 66-276-1043-42-44 N. Waco - 5-8-78 (3+22) f. Long  
 C 58714-1016 N. Waco - 11-16-76 N.C. Joe Matthews (7+01.2)  
 C 57004-1046 N. Waco - 8-3-76 (top 2+29.3)  
 # 541-Private Line - 1138 N. Waco - 11-10-41 - Tess Hanna  
 # 639-Private Line - 1020 N. Waco - 11-19-41 - C.G. Leidy - 10-25-72 (6+04.1)  
 # 582-1002 N. Waco - La Fey Pkg.  
 # 583-Private Line - same as above.  
 Top - 1052 N. Waco - Lepton Pkg - 1/20/77 (1+76.4)  
 # 21379-1046 N. Waco - Al Henning - 10/16/70 (3+51.4)  
 # 65042 - (1040) N. Waco - 2-14-78 Al Henning (1+11.7)

19857-1135 N. Fairview - 12-10-87  
 (20.5'S. of N. PL 2' off main)  
 # 26887-1-1791 - 1030 N. Waco - Henning (5+06.0)  
 # 93-8441-7 - 4/19/93 - (1150 N. Waco) - Henning - 5/21' ft south of NPL  
 and 4' from - No alley cut -