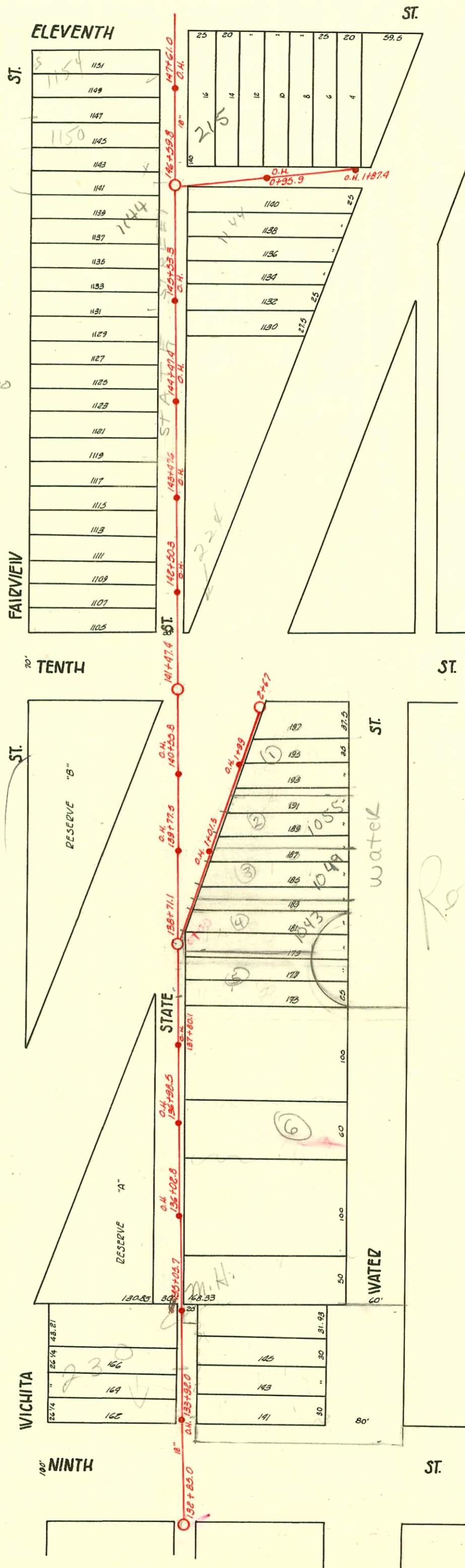


MAIN "A" FROM NINTH ST. TO ELEVENTH ST.  
 SPUR EAST OF "A" IN ALLEY SOUTH OF ELEVENTH ST.  
 S.S. #1-1889

TRAP AREA

Plot 9-43

2002-00350-2142-215 W 11th St - Bob Scott  
 4" PVC, 36" EofMA, CITY TAP, NEW trap, LTWINCO



CONSTRUCTION RECORD						SERVICE RECORD						
STATION	ELEVATION		Depth	MANHOLE	4-INCH "Y" BRANCHES		No. of Permit		House Number		DATE OF PERMITS	
	Ground	Grade			North West	South East	North West	South East	North West	South East	North West	South East
	117.03	118.99	4.04	+74 F.T.		+64.5		#190	1059 N. WATER			3-16-80
2	117.53	118.51	5.08	2167 M.H.		+74.4 TAP		17258	1001 N. WATER			11-6-86
				+99 O.H.		+20						
						+95						
1	117.90	111.76	6.14	+01.5 O.H.		+70		#35	500 Baker			8-3-15
						+43.5		93-6072-7	1055 WATER			3-23-93
						+19						
						+9.5		93-6081-7	1049 WATER			3-23-93
						+67						
						+50						
0		111.01		0+00		+42		#24	1041 WATER			8-11-18
						+17		93-6082-7	1043 WATER			3-23-93
						+87.4 O.H.		#433	107 N. 11th			8-13-31
						+61.5						
						+37.0		#296	301 W. 11th			5-31-13
1						+18.6	+14.6 S	#481	1144 State			11-10-36
						+95.9 O.H.						
						+88.1		#439	219 W. 11th			10-18-16
						+63.9						
						+37.5		#577	213 W. 11th			2-11-07
0				0+00		+13.5						18-5-18
						+61.0 O.H.		#230	1146 Fairview			5-4-31
						+47.4		#618	1103 State			10-8-35
						+22.2		#653 (653)	1154 N. Wichita			7-21-97
147	116.39	111.34	5.05			+96.5						8-2-11
						+78.0		8001-2310	1144 Fairview			9-17-01
						+51.5						
146	116.06	111.84	4.82			+26.5	+49.5					
						+40.4	+84.5					
						+99.4						
						+53.3 O.H.	+74.5					
						+51.5	+49.5					
						+26.5	+84.5					
145	116.54	111.14	6.40			+20.0	+00.0	10527	210 W. 70th			5-28-59
						+77.8	+75.8					
						+47.4 O.H.	+51.3					
						+28.0	+86.0					
144	117.35	111.04	6.31			+03.0	+01.0					
						+78.7	+76.7					
						+47.6 O.H.	+51.9	#1713	224 W. 10th			2-2-67
						+27.5	+49.9	#421	1127 N. Wichita			4-29-82
143	117.09	110.94	6.15			+20.6						
						+77.5						
						+50.3 O.H.	+58.8					
						+87.9						
142	117.23	110.84	7.09			+03.5						
141	118.85	110.74	9.51	+47.4								
140	118.72	110.64	8.08	+55.8 O.H.								
139	118.28	110.54	7.74	+77.5 O.H.								
				138 +71.1 M.H.								
								#136	Water from the Electric Power Co's engines.			10-31-90
								17161				10-20-86
138	117.60	110.44	7.16			+44.6		#1253	1039 N. WATER			11-18-85
						+17.4						
						+98.4		#169	1037 N. WATER			4-10-18
						+67.8		#478	1035 N. WATER			7-7-187
						+43.1						
137	117.69	110.34	7.35			+18.0		#1164	1033 N. WATER			7-31-77
						+98.5 O.H.						
						+98.8	+90.8					
						+67.1	+65.1	#601	1029 N. WATER			8-22-11
						+42.0	+40.0	#583	1027 N. WATER			10-16-05
136	117.83	110.84	7.59	+02.8 O.H.		+17.3	+15.3					11-27-13
						+98.3	+90.3	#341	1021 N. WATER			6-26-11
						+67.0	+65.0					
						+42.7	+40.7					
135	116.99	110.14	6.85	+05.7		+17.4	+15.4	#1313	1007 N. WATER			6-1-71
						+71.5	+86.0	#24616				10-24-19
						+43.5	+37.0	#1497	1005 N. WATER			7-4-85
134	116.48	110.04	6.38			+19.7	+26.0	#3304	1001-03 N. WATER			9-9-01
133	115.78	109.94	5.84	+96.0 O.H.		+96.5	+94.5	#21748	212 W. 9th			11-11-70
132				+85.0								6-14-50

#255-Tap-235 W. 104th-5-29-37-Johnson Pibg. Co.  
 #364-Tap-1138 Fairview-3-30-43-Johnson Pibg. Co.  
 #B 1869-1140 Fairview Seal off-8-31-64; while changing service  
 C 32722-10157 N. Water Seal off 6-7-72 C.L. Rutledge (135+17.3)  
 C 43512-1001-03 N. Water Seal off 2-15-74 at Farming (133+94.5 - see above)  
 C 72638-1041 N. Water Seal off - 10-6-59-79 (142+21.0)  
 25116-1150 N. Fairview S.O. - Naming - 4-12-90 (6' S. of NR)  
 #93-6082-7 N/C 1043 N. Water - 4' x 36" 35' pipe top - into new 2' section of main installed by city 14" pf shown; 40 trap installed.