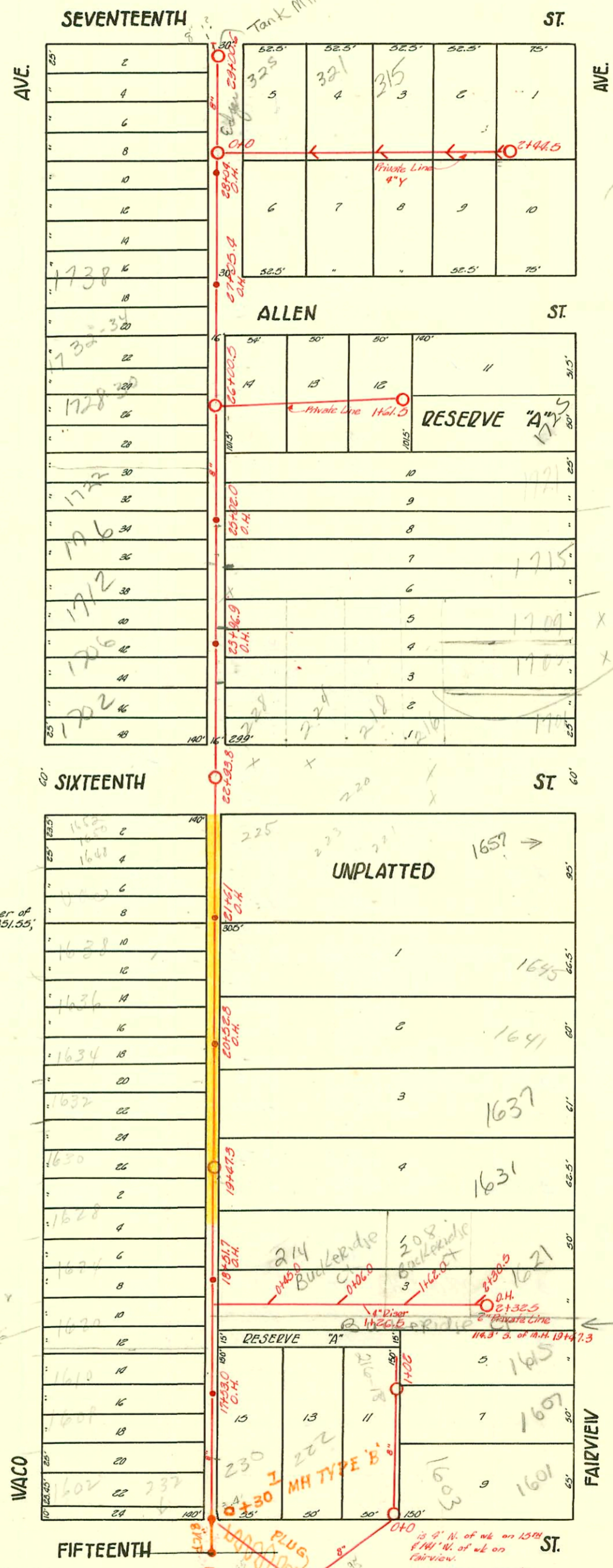
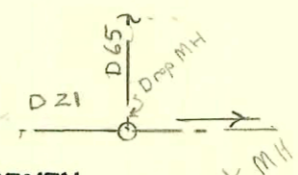


TRAP AREA

WEST SUB MAIN "A" ON FIFTEENTH ST. TO SEVENTEENTH ST.
S.S. #1 - 1889

LAT. A - S.S. #1 - 1921

Plat 9-40



CASEMENT #165: E. line of tract beg. 336' W. of N.E. corner of S. 1/4 of N.W. 1/4 - Sec. 8 - 27 - 12., S. 351.05'; W. 149'; N. 351.05'; E. to beg.

See also
left of F-1 main
about priv. prop. lines
BSK

TRAP AREA

1620 w/10
Legs C
1022 w/12
and Reserve A

Buckeridge Ct

2003-02521-9/29/03 -
1631 Fairview - Redd Rostr -
2 Fernco, 6" Sch 40 PUC - Repair
break in line aprx 20'
from house.

2002-01721-6/18/02 - 1702 WACO -
Dutchman's - 4" SCH 40, 170 WING

RECON OF PORTION SAN SEWER No 1
BUILT BY CLEARWATER EXCAVATION CO.
PROJ. No 542-80-245-80034-000-001
BOOKED 8-10 -81 FROM AG 13A

- 09R2007-00120 - 1150 N WACO - clo only
- 95-13147 8-23-95 228 w 16th - 4" sch 40 PUC
Repl all but lower 26'
- R Repl trap approx 70' W of MH STA 22+938
- 99-14660 8-27-97 - 1621 N Fairview - Century p/lz
- 2000-02395 - 1715 S Fairview 10/31/00 Asch No leaks - 4" SCH 40, 2-way go

CONSTRUCTION RECORD

SERVICE RECORD

STATION	ELEVATION		Depth	MANHOLE	4-INCH "Y" BRANCHES		No. of Permit		House Number		DATE OF PERMITS			
	Ground	Grade			North West	South East	North West	South East	North West	South East	North West	South East	North West	South East
29	124.19	119.91	4.28	100.6' FT	+98.3	+96.3	#731		1756 N. Waco		6-24-22			
					+77.5	+75.5	#686		1744 Waco		6-18-15			
				+04.0 O.H.	+86.4	+84.4								
28	124.11	119.66	4.45		+102.2	+100.2	#153		1742 N. Waco		1-29-23			
					+77.8	+75.8								
				+05.4 O.H.	+88.7	+86.7			1743 Fairview			10-3-04		
27	123.80	119.41	3.39		+103.6	+101.6	#1554		1740 N. Waco		3-5-47			
					+78.7	+76.7								
					+53.7	+51.7	#23772		1732-34 N. Waco		4-16-71			
					+89.8	+87.8								
26	123.35	119.16	4.19	+100.5	+106.5	+104.5	#1824, #1260, #967		1728-30 N. Waco	1734 N. Waco	4-16-71, 9-8-39, 6-8-19			
					+75.4	+73.4								
					+51.3	+49.3								
				+02.0 O.H.	+86.0	+84.0	#357		1732 N. Waco		5-8-21			
25	123.07	118.91	4.16		+101.0	+99.1	#35		1716 N. Waco		1-5-17			
					+76.2	+74.2	#162		1734 Waco		1-24-23	3-21-28		
					+51.7	+49.7						8-5-29		
					+86.9	+84.9								
24	122.45	118.66	3.79		+101.2	+99.2	#766	#984	1702 N. Waco	228 W. 16th St	9-13-11	8-5-29		
				+96.9 O.H.	+99.8	+97.8								
					+76.2	+74.2								
					+52.0	+50.0	#463	#618	1702 N. Waco	1610 N. Waco	6-10-09	4-13-10		
					+86.1	+84.1	#41					5-4-25		
23	121.55	118.41	3.14		+52.0	+50.0								
				+93.8	+91.8	+89.8								
					+87.0	+85.0	#1036		1656 N. Waco		11-28-30			
22	120.90	118.16	2.74		+102.0	+100.0	#1828		227 N. 16th St		9-12-39			
				+61.0 O.H.	+77.2	+75.2	#1519		1635 Fairview		11-10-22			
					+52.8	+50.8	#123		1637 N. Waco	1651 Fairview	2-5-10	9-30-22		
					+87.8	+85.8	#1602		1640 N. Waco		11-24-22			
					+102.6	+100.6	#434		1636 N. Waco	1643 N. Fairview		7-7-08		
21	121.03	117.91	3.11		+77.2	+75.2	#295		1636 N. Waco		9-24-12			
				+52.8 O.H.	+49.0	+47.0	#65		1637 N. Waco		6-25-12			
					+101.0	+99.0	#443	#324	1637 N. Waco	1637 Fairview	3-1-94			
					+83.8	+81.8	#79				5-13-11	7-2-12		
20	120.88	117.66	3.22		+101.0	+99.0					5-11-07			
					+76.0	+74.0	#171	2002-0784	1630 N. Waco	1631 R Fairview	1-31-23	9-29-03		
				+47.3	+45.3	+43.3						10-12-09		
19	120.62	117.41	3.21		+105.3	+103.3	#160		1628 N. Waco		4-5-09			
					+80.6	+78.6	#755		1626 N. Waco		12-1-09			
				+51.7 O.H.	+55.7	+53.7								
					+31.8	+29.8	#299		1620 N. Waco		4-12-11			
18	120.17	117.16	3.01		+106.7	+104.7	#649		1610 N. Waco		8-23-20			
				+53.0 O.H.	+56.9	+54.9								
					+36.6	+34.6								
17	120.28	116.91	3.37		+107.5	+105.5	#581		320 W. 16th St			9-14-09		
					+82.5	+80.5	#1330		1602 N. Waco		10-11-22			
16	120.02	116.80	3.40	+56.2 O.H.	+61.6	+59.6								
Lat. "A", S.S. #1			3.5	040	0430	0428	#1626	#437	276 W. 15th St	1605 Fairview	11-21-29	1-3-23		
					+57.5	+55.5						5-4-22		
												12-28-21		
Sewer in Zena's Subdivision - 4" V's														
040			040	0424.6	0430.2		#589		326 Allen			11-8-37		
140				0480.7	0480.7		#163	#164	321 W. 17th St	350 Allen	4-16-37	4-16-37		
				1432.7	1429.7		#647		316 Allen			12-21-37		
640				1443.7	1440.7		#588		315 W. 17th St			11-5-37		
				2402	1499									
				2438.7	2435.7		#423		303 W. 17th St			8-19-37		
2444.5				2444.5										
8" Sewer South of Allen - in Zena's Subdivision - 4" V's														
040				+740			#390		321 Allen			8-5-37		
140				1404.75			#466		319 Allen			9-20-37		
1461.5				1461.5										

25286-1632 N. Waco - 5-2-90 - Perry's Survey

#1239 - Private Line - 220 W. 16th St - 9-14-22 - Wilson Pkg. Co.
 #264 - Tap - 1600 N. Waco - 3-22-30 - Home Builders Pkg. Co.
 #806 - Tap - 224 W. 15th St - 4-15-38 - Brodie Pkg. Service
 #1801 - Private Line - 1734 N. Waco - 8-21-39 - Carl E. Carr
 #1829 - Tap - 223 W. 16th St - 10-30-39 - W.O. Harrison
 #2841 - Private Line - 216 W. 16th St - 11-6-40 - M.L. Lansdowne
 #3262 - Private Line - 216 W. 16th St - 4-1-41 - M.L. Lansdowne
 #3639 - Private Line - 1705 Fairview - 6-18-41 - M.L. Lansdowne
 #3700 - Private Line - 1705 Fairview - 6-18-41 - M.L. Lansdowne
 #81 - Private Line - 1705 Fairview - 9-13-41 - M.L. Lansdowne
 #111 - Tap - 1621 Fairview - 9-17-41 - E. LaFay
 #113 - Private Line - 209 Breckenridge Ct - 9-17-41 - E. LaFay
 #344 - Private Line - 1733 Fairview - 10-14-41 - Frederick
 #126 - Private Line - 125 S. 41st - E. LaFay
 #122 - Tap - 305 W. 17th St - 4-23-57 - W.F. Hayes
 #325 - Tap - 325 W. 17th St - 6-29-37 - Shellenberger
 #522 - Tap - 310 W. Allen - 10-11-37 - Tess Hanna
 #582 - Tap - 327 W. Allen - 11-4-37 - V. Shellenberger

6836 Tap - tracks - 57 58
 69214 - 20 (250 W. 15th) - 11-19-11
 69215 - 20 (230 W. 15th) - 11-19-11
 #6922 - 160371 Fairview - 11-5-82 - Dan Barnett (0400N-2270 N +220)
 16 6935 1603N Fairview - 11-8-82
 96-15780-7 9-24-96 1706 N Waco - McClurg's