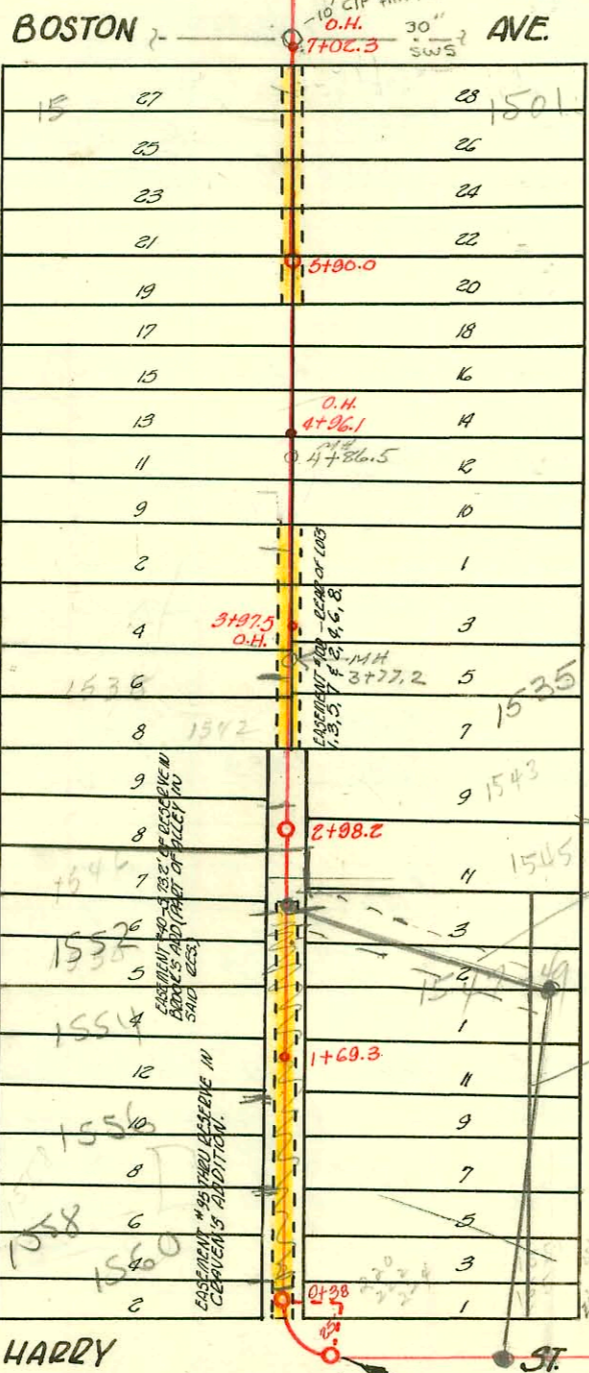
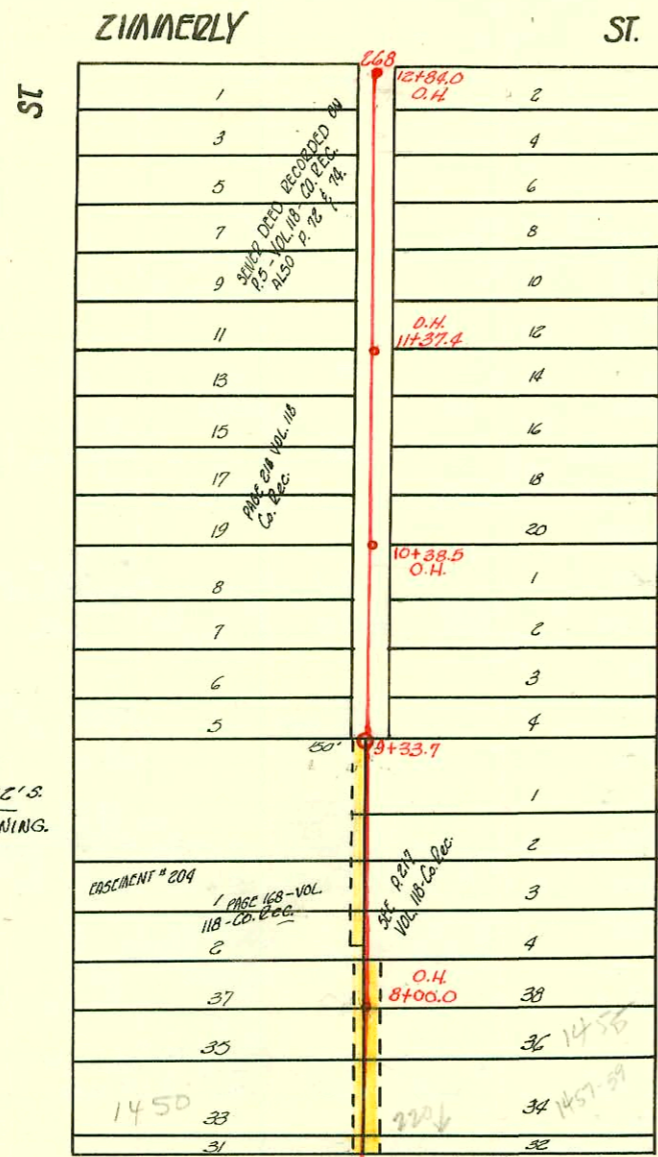


TRAP AREA

Interception of West Lat. B from Harry St. to Zimmerly St.  
3.S. #1-1889

Plat 9-58

CASEMENT #100 & 101: EAST LINE OF BEGINNING 1735' S.  
180' W. OF N.E. CORNER OF S.E. 1/4 SEC. 29-27-1 -  
THENCE S. 100' W. 150' N. 100' E. 150' TO BEGINNING.



CASEMENT #37: LOTS 19-21-23-25-27-29-31-33-35-37-39 MARKET  
LOTS 20-22-24-26-28-30-32-34-36-38 BROADWAY  
IN STANLEY & MCPHERSON'S ADDITION.

29' ESMT by separate E.M.S.T.  
Main featured by BRIS. Protect Ref. to ARC Uren  
60K copies of plans BK

Abandoned

See bk. L-24 for relocation.

NK 2002-00630 - 31802-1545 S Broadway. Overnight sub relocation.  
"4" Sch 40- 4" Wye Rep. 61.4' S of MH (at 26.8) laid (30' in ditch) TWIN CO, 2022

SWR 2002-01814 7/9/02 1558 S. Market (have) 1560 S. Market (Bus) Boardman.  
Sealed @ property line 55.9' N of MH

