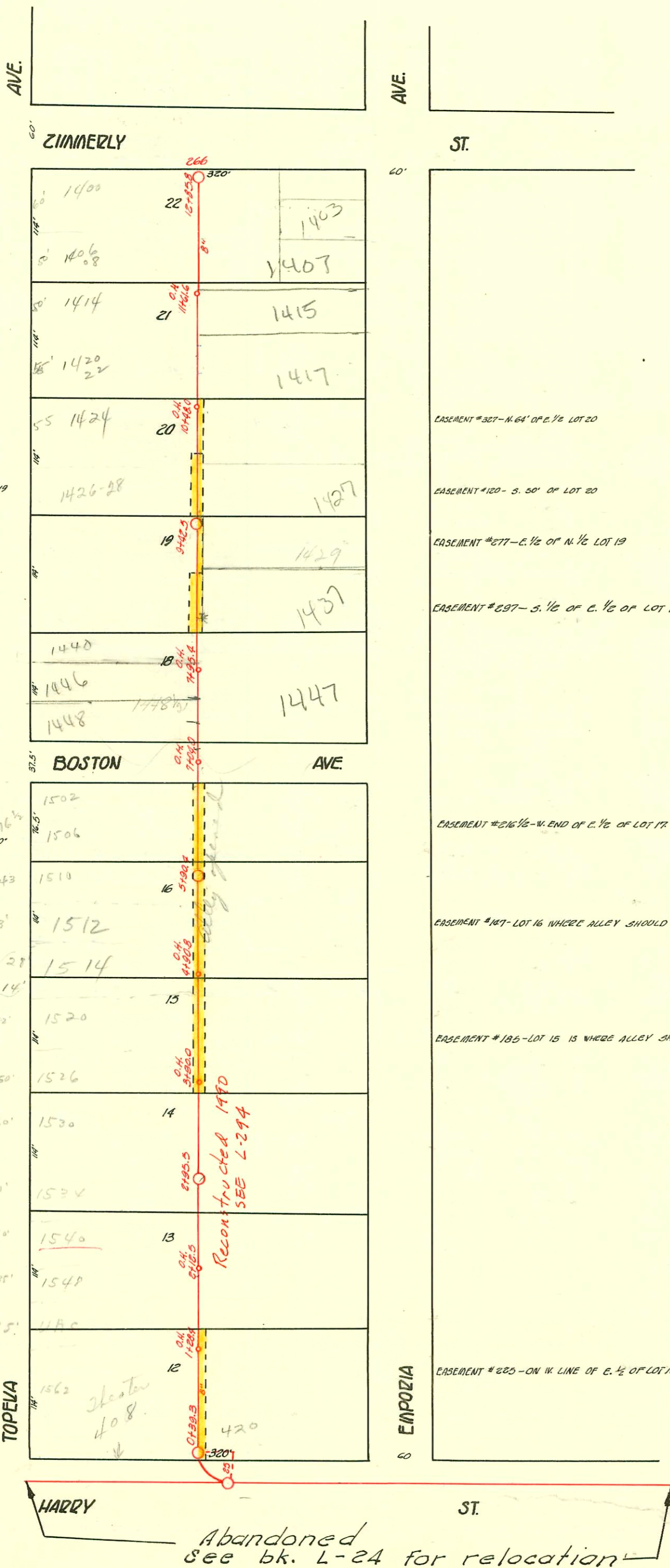


TRAP AREA

INTERCEPTION & LAT. B FROM HARRY ST. TO ZIMMERLY ST.  
S.S. #1-1889

Plot 9-59



EASEMENT #226 - W. 1/2 OF 1/2 OF LOT 19

EASEMENT #224 - W. 1/2 OF LOT 17.  
EASEMENT #184 - ON E. LINE OF S. 55' OF W. 150' OF LOT 17.

EASEMENT #327 - N. 64' OF E. 1/2 LOT 20  
EASEMENT #120 - S. 50' OF LOT 20  
EASEMENT #277 - E. 1/2 OF N. 1/2 LOT 19  
EASEMENT #297 - S. 1/2 OF E. 1/2 OF LOT 19

EASEMENT #216 - W. END OF E. 1/2 OF LOT 17.  
EASEMENT #187 - LOT 16 WHERE ALLEY SHOULD BE.  
EASEMENT #185 - LOT 15 IS WHERE ALLEY SHOULD BE.

EASEMENT #225 - ON W. LINE OF E. 1/2 OF LOT 12.

2001-00392- 2/22/01- 1403 Emporia  
4" SCH 40 Donut 60.9" S of mt 12+3578  
(12+24.9) Trap Installed, TWINCO  
2H22

CONSTRUCTION RECORD

SERVICE RECORD

STATION	ELEVATION		Depth	MANHOLE	4-INCH "Y" BRANCHES		No. of Permit		House Number		DATE OF PERMITS	
	Ground	Grade			North West	South East	North West	South East	North West	South East	North West	South East
	105.43	101.03	4.40	12+85.6 O.H.								
				12+51.8			# 573	# 941				5-26-19
				12+86.7			# 386					4-14-10
12	105.19	100.68	4.51	12+01.8	12+49.8 5/8 4 1/2" SCH 40	12+82.7	# 196	# 386	1408 S. Topoka	1421 S. Emporia	11-24-03 7-1-10 11-6-09 10-8-07	12-22-01 10-13-02 6-24-04
				11+61.6 O.H.		11+99.8						
				+76.7		+74.7						
				+51.4		+86.8	# 433	# 386	1414 S. Topoka	1415 S. Emporia	4-20-59 9-23-12	5-9-10
11	105.03	100.28	4.75			+01.2	# 49	# 1589	1417 S. Emporia	1417 S. Emporia	3-23-08	11-22-02
						+76.4	# 587	# 1400	1420 S. Topoka	1417 S. Emporia	11-20-59 8-22-05	
				10+48.0 O.H.		+52.2						
						+88.0	# 1910	# 51953	1424 S. Topoka	1424 S. Emporia	2-26-08 12-2-68 10-11-10	
10	104.63	99.88	4.74			+02.3	# 557					
						+78.0						
						+52.0	# 328	# 140	1430 S. Topoka	1427 S. Emporia	6-1-76 7-27-10	6-3-10
9	104.69	99.48	5.21	9+42.5 O.H.		+01.7	# 448	# 140	1430 S. Topoka	1427 S. Emporia	7-27-10	7-23-07
						+77.2	# 5078	# 357	1431 S. Topoka	1437 S. Emporia	6-14-76 7-26-12	
						+153.1	# 331	# 143	1436 S. Topoka	1446 S. Emporia	3-6-03 6-15-09	9-28-08 3-13-11
8	104.20	99.08	5.12	8+01.8 O.H.		8+25.5	# 357	# 143	1436 S. Topoka	1446 S. Emporia	3-6-03 6-15-09	3-13-11
				7+95.4 O.H.		+99.8	# 1563	# 1703	1446 S. Topoka	1447 S. Emporia	11-17-00 12-20-02	8-1-00 12-12-02
						7+77.2	# 1703	# 143	1446 S. Topoka	1447 S. Emporia	11-17-00 12-20-02	8-1-00 12-12-02
						7+52.7	# 1703	# 143	1446 S. Topoka	1447 S. Emporia	11-17-00 12-20-02	8-1-00 12-12-02
				7+04.0 O.H.		+26.4	# 156	# 390	1448 S. Topoka	1447 S. Emporia	3-22-10	
7	104.21	98.68	5.53			+02.2	# 454	# 394	1502 S. Topoka	1501 S. Emporia	7-28-14	4-27-11 6-25-09
						+77.9						
						+52.0						
						+27.8						
6	103.88	98.28	5.60	6+02.0 O.H.		+00.0	# 369	# 331	1506 S. Topoka	1509 S. Emporia	7-29-15	4-27-00
				5+90.4 O.H.		+76.5	# 155		1510 S. Topoka	1513 S. Emporia	3-16-11	
						+51.4	# 351	# 130	1512 S. Topoka	1517 S. Emporia	7-24-12	4-11-12
5	103.91	97.88	6.03			+27.2	# 138	# 130	1512 S. Topoka	1517 S. Emporia	7-24-12	4-11-12
				4+90.8 O.H.		+01.0		# 131	1519 S. Emporia	1519 S. Emporia	4-11-12	
						+99.0	# 362		1516 S. Topoka	1525 S. Emporia	7-23-15	
						+77.0	# 262	# 338	1520 S. Topoka	1525 S. Emporia	6-3-15	4-17-11
						+51.0	# 1436	# 408	1526 S. Emporia	1527 S. Emporia	9-27-23	
4	103.80	97.48	6.32			+27.2	# 6122	# 408	1526 S. Emporia	1527 S. Emporia	9-27-23	10-15-51 6-29-09
				+90.0 O.H.		+00.8	# 408					
						+98.8	# 2753	# 241	1531 S. Emporia	1535 S. Emporia	12-8-49	
						+77.0	# 433	# 241	1530 S. Emporia	1537 S. Emporia	7-16-18	5-3-09
3	103.59	97.08	6.51			+27.4	# 224	# 224	1537 S. Emporia	1537 S. Emporia	11-16-05	
				2+95.5		+03.2						
						+76.6	# 28		1534 S. Emporia	1534 S. Emporia	3-22-05	
						+52.6	# 746		1537 S. Emporia	1537 S. Emporia	11-29-09	
2	103.88	96.68	7.20	+12.5 O.H.		+28.8	# 352	# 746	1538 S. Topoka	1537 S. Emporia	6-16-10	9-6-00 11-16-08
						+03.0	# 2255	# 270	1538 S. Topoka	1537 S. Emporia	6-16-10	
						+76.7						
						+74.7						
				+28.4 O.H.		+51.0						
						+49.0						
						+26.7						
1	104.48	96.28	8.20			+24.7	# 315	# 195	1529 South Topoka	1561 N. Emporia	4-27-27	
						+02.5						
						+00.5						
0	104.61	96.04	8.57	+39.3		+53.1	# 195	# 195	1564 S. Topoka	1561 N. Emporia	4-11-05	9-1-08
						+79.3						
						+53.1						

Rep 2000-01761-1447 S Emporia- 4" SCH 40- Coriser only- 2 Fernco to clay S.O. C46766-1423 S. Emporia- 9-23-94- Kendall (sealed 26' 20" of S.O. P/L)

# 250-120-1333 Emporia- 3-19-23  
 # 3956-Private Line-1539 S. Emporia- 8-5-41-A&A Pkg.  
 # 1780-Tap-454 E. Harry-10-23-44-Moore-Libertson  
 # 882-Tap-450 E. Harry-11-6-46-Simmons Pkg.  
 # 6125-Tap-1527 Emporia (South)-10-15-51-Howard Shepherd  
 # 1841-Tap-1501 S. Emporia-12-30-48-Cowart  
 # 5728-Tap-1533 S. Emporia- 9-12-51-Shepherd (Trailer)  
 # 6136-Private Line-1533 S. Emporia-10-16-51-Joe McDonald (Trailer)  
 # 26516-11-14-40-1440 S. Topoka Henning (129' 10" Center Line of Bismar St)  
 # 93-4018-7-1401 S. Emporia- 5/8 3' East of WPL and 3 1/2' South of NPL.  
 4" Clay tile line (No Alley)