

MAIN B FROM ZIMMERLY ST. TO LINCOLN ST.
S.S. #1-1889

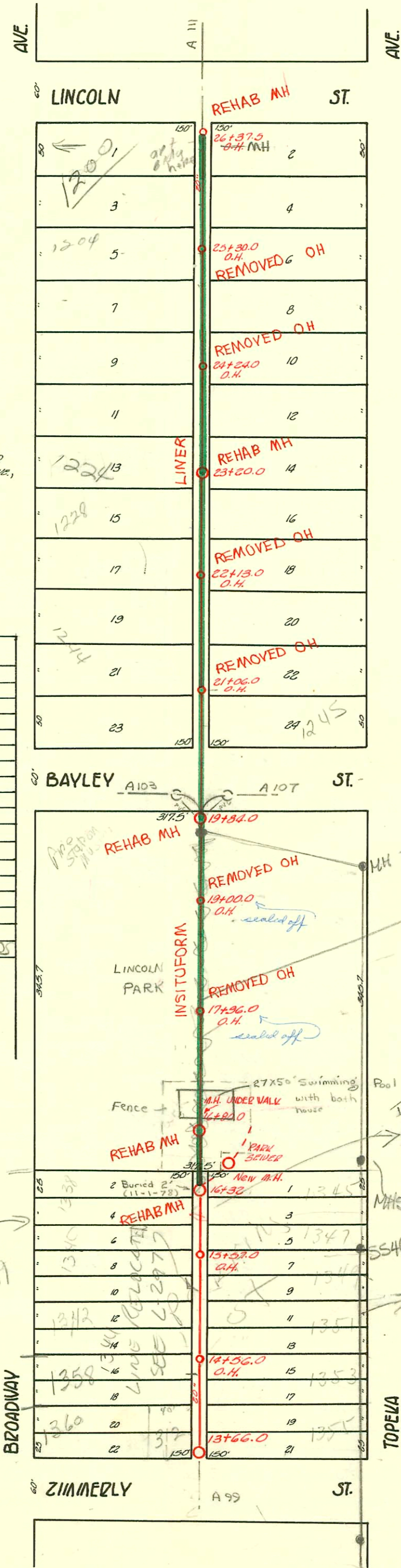
TRAP AREA

Plat 9-59

EASEMENT 5'± TO CENTER OF LAND BOUNDED ON THE NORTH BY LINCOLN ST., ON THE SOUTH BY ZIMMERLY ST., ON THE WEST BY LAWRENCE AVE., ON THE EAST BY TOPEKA AVE.

RECONNECTIONS

STATION	ADDRESS	DIRECTION
20+75.7	322 E. Bayley, 1245 S. Topeka	EAST
21+11.1	1240 S. Broadway	WEST
21+23.4	1241 S. Topeka	EAST
21+69.2	1231 S. Topeka	EAST
22+45.8	1229 S. Topeka	EAST
22+83.9	1227 S. Topeka	EAST
23+99.4	1224 S. Broadway	WEST
23+17.5	1225 S. Topeka	EAST
23+74.1	1223 S. Topeka	EAST
24+73.1	1219 S. Topeka	EAST
24+75.8	1214 S. Broadway	WEST
25+02.2	1215 S. Topeka	EAST
25+26.8	1207, 1209 S. Topeka	EAST
25+73.4	309, 311 E. Lincoln	WEST
25+75.4	1205 S. Topeka	EAST
26+00	1203 S. Topeka	EAST
26+22.6	1200 S. Broadway	WEST
26+24.5	315, 317 E. Lincoln	EAST



RECONSTRUCT SANITARY SEWER NO. 1 AND 20 (SOUTH OF DOUGLAS)
 PROJ. NO. 468-81996 (630541)
 BOOKED 12-4-92 FROM AS BUILTS
 BUILT BY INSITUFORM, PLAINS INC.

MH 5546-054
 Line abandoned and Reconnected from EXIST MH 5546-028 to MH 5546-056 by system planning
 Immanuel Baptist ch Addition
 20" clay main south of Park Prop became Private sewer for Church when CHY main Relocated (Book L-297)
 MH 5546-052
 5546-028
 SEE L-297

Replat see 9-59

SCALE 1"=100'

N/C SWR 2000-01740-1310 S Broadway (Lincoln Park Bath House) - Brake-Red Plug - 4" SCH 40 - MH STUB 4" W - 1-WAY CO, 1-TWIN CO, 2V45, 2H45, 4" trap installed

CONSTRUCTION RECORD						SERVICE RECORD						
STATION	ELEVATION		Depth	MANHOLE	4-INCH "Y" BRANCHES		No. of Permit		House Number		DATE OF PERMITS	
	Ground	Grade			North West	South East	North West	South East	North West	South East	North West	South East
26	106.58	98.27	8.25	26+37.5	26+80.0	+22.0	#422	#441	1202 S. Broadway	317 E. Lincoln	5-8-11	5-13-11
					25+95.0	+97.0		#22	1203 S. Broadway	1203 S. Broadway		3-1-06
					24+70.0	+72.0	#84	#187	1206 S. Broadway	1207 S. Broadway	5-5-06	8-15-08
25	106.39	98.17	8.22	+30.0	0.16+45.0	+47.0	#755	#271	1204 S. Broadway	1204 S. Broadway	3-7-27	5-10-09
					25+80.0	+82.0	#20	#90	1214 S. Broadway	1209 S. Broadway	8-27-06	5-7-06
					24+95.0	+97.0	#228	#39	1236 S. Broadway	1211 S. Broadway	4-29-08	5-7-06
					+70.0	+72.0	#20				1-17-10	
24	106.64	98.07	8.17	+84.0 O.H.	+45.0	+47.0						
					+14.0	+16.0						
					+89.0	+91.0	#214	#196	1216 S. Broadway	1221 S. Broadway	10-3-06	4-16-17
					+64.0	+66.0	17085		1220 S. Broadway		10-10-86	
23	106.00	97.97	8.03	+80.0	+39.0	+41.0						
					+14.0	+16.0	11497	#254	1224 S. Broadway	1225 S. Broadway	7-15-84	11-5-08
					+89.0	+91.0	5761		1224 S. Broadway		7-15-84	
					+64.0	+66.0	8973		1224 S. Broadway		6-3-82	
					+39.0	+41.0		#337	1229 S. Broadway		3-12-83	
22	105.98	97.87	8.11	+130 O.H.	+14.0	+16.0	#541		1240 S. Broadway	1229 S. Broadway	8-27-09	5-28-17
					+89.0	+91.0	8972		1240 S. Broadway		8-27-09	
					+64.0	+66.0	#659	#478	1231 S. Broadway		8-27-09	
					+39.0	+41.0	#108	#5075	1241 S. Broadway	1241 S. Broadway	10-25-09	8-10-10
21	105.89	97.77	8.12	+06.0 O.H.	+16.0	+18.0		#531	1243 S. Broadway	1243 S. Broadway	3-22-09	8-10-55
					+91.0	+93.0	10566		1243 S. Broadway		8-24-09	
					+66.0	+68.0	#94		1245 S. Broadway	1245 S. Broadway	4-6-84	10-21-78
					+41.0	+43.0			1250 S. Broadway		5-7-06	
20	106.55	97.67	8.88	+84.0	+16.0	+18.0					8-11-22	
					+91.0	+93.0						
					+76.0	+68.0						
					+66.0	+43.0		#25	1228 S. Broadway		5-10-06	
19	106.77	97.57	9.20	+00.0 O.H.	+41.0	+18.0						
					+91.0	+93.0		#73	1228 S. Broadway		8-3-20	
					+66.0	+68.0						
					+41.0	+43.0						
18	106.18	97.47	8.71	+96.0 O.H.	+16.0	+18.0						
					+91.0	+93.0						
					+66.0	+68.0						
					+41.0	+43.0						
17	105.48	97.37	8.11	+80.0	+16.0	+18.0						
					+91.0	+93.0	#251				5-27-19	
					+66.0	+68.0						
16	105.17	97.27	7.90	16+32 M.H.	+41.0	+43.0						
					+16.0	+18.0	#139	#20187	1338 S. Broadway	1345 S. Broadway	6-26-08	3-21-91
					+91.0	+93.0	#193	#21253	1340 S. Broadway	1347 S. Broadway	8-14-24	8-14-24
					+57.0 O.H.	+68.0	91-24507	#378	1340 S. Broadway	1347 S. Broadway	12-4-91	9-23-10
15	105.37	97.17	8.20		+16.0	+18.0						
					+41.0	+43.0						10-13-81
					+91.0	+93.0						
					+56.0 O.H.	+68.0	#329	#2001	1344 S. Broadway	1344 S. Broadway	6-3-09	5-28-02
					+41.0	+43.0	#299	#21392	1358 S. Broadway	1358 S. Broadway	7-15-94	10-14-01
14	105.68	97.07	8.61		+16.0	+18.0		#3194	1358 S. Broadway	1358 S. Broadway	8-9-09	8-27-88
					+91.0	+93.0		#459	1353 S. Broadway	1353 S. Broadway	7-9-41	7-9-41
					+13+93.0	+13+93.0	#18423		1353 S. Broadway	1353 S. Broadway	7-6-17	7-6-17
13				13+66.0	+13+91.0	+13+72.0	#358		318 S. Broadway	318 S. Broadway	7-27-12	

17055 - 1222 S. Broadway - 10-2-86 - Campbell 22+20.0
 #1227-Tap-1250 S. Lawrence - 11-20-28
 #1320-Private Line-1336 S. Broadway-12-22-27-C.B. Brimmer-Hennings (So. 44' S. of MH)
 #1708-Tap-1214 S. Broadway-9-17-29-Nelson Pkg. Co.
 #120641-1351 S. Topoka - 5/9/88-Rick Honey - (14+72.5)
 23585-4360 S. Broadway - 7-24-89-S.O. (Hennings) (25' W of MH at Wye 13+66 MH)
 #24201-11-01-89-1200 S. Broadway -
 #1294-1-22-92-1342 S. Broadway -
 (6' clay tile approx 1' deep sealed off approx 2' out from main 11 1/2' S/O of manhole)