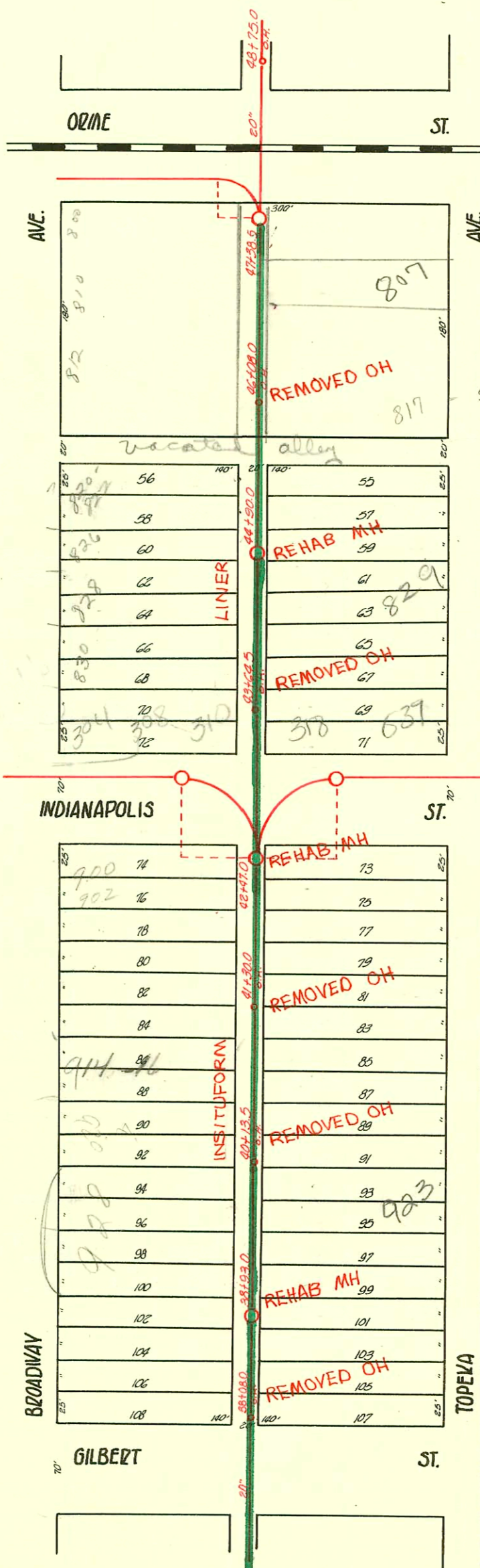


TRAP AREA

MAIN "B" FROM GILBERT ST. TO ORME ST.
S.S. #1-1889

Plot 9-56



540' existing
E-140
shelving down alley
to So.

RECONSTRUCT SANITARY SEWER 1 AND 20
(SOUTH OF DOUGLAS)
PROJ. NO. 468-81996 (630541)
BUILT BY INSITUFORM PLAINS, INC.
BOOKED 12-4-92 FROM AS BUILTS

RECONNECTIONS

STATION	ADDRESS	DIRECTION
38+30	943 S. Topeka	East
38+42.2	312 E. Gilbert	West
38+79.6	941 S. Topeka	East
39+56.4	931, 933, 933, 923 S. Topeka	East
39+58.1	928 S. Broadway	West
40+31	921 S. Topeka	East
40+57.3	916 S. Broadway	West
40+74.3	917 S. Topeka #1 & #3	East
40+92.7	917 S. Topeka #2	East
41+02.6	915 S. Topeka	East
41+05	910, 910 1/2, 912, 912 1/2 S. Broadway	West
41+77.5	907 S. Topeka	East
41+79.3	904, 904 1/2, 906, 906 1/2 S. Broadway	West
42+16.8	315 E. Indianapolis	East
42+24.9	903, 903 1/2 S. Topeka	East
42+27	900 S. Broadway	West
43+51.6	839 S. Topeka	East
43+57.6	318 E. Indianapolis	East
43+76.5	306 E. Indianapolis	West
43+79.1	833 S. Topeka	East
45+35.7	821 S. Topeka	East
45+36.3	822 S. Broadway	West
45+77.3	817 S. Topeka	East
45+87.3	816 S. Broadway	West
46+06	815 S. Topeka	East
46+32.8	810 S. Broadway	West
46+49.3	813 1/2 S. Topeka	East
46+63.9	811, 813 S. Topeka	East
46+73.8	800 S. Broadway, Suite #160, 400, 500	West
46+78.2	807 S. Topeka R- See below	East
47+13	317 E. Orme	East
47+23.7	800 S. Broadway, Suite # 700, 600	West

2004-00249-112864- 807 S Topeka - Clearwater Exc- 4" PVC, replace front 1/2 of sewerline, new house trap, 122H, 1 twin co

2000-02015-0112100 923 S Topeka - Bowers - Inst CO only
91-24883-7 6/20/91 809-13 S. Topeka - McClung - (rear house kept on exist sewer - no wy + flow) City Tap 865' S. of MH 6" sch 40 PVC on front house

CONSTRUCTION RECORD							SERVICE RECORD					
STATION	ELEVATION		Depth	MANHOLE	4-INCH "Y" BRANCHES		No. of Permit		House Number		DATE OF PERMITS	
	Ground	Grade			North West	South East	North West	South East	North West	South East	North West	South East
				+750 O.H.	+63.0	+63.0						
48					+39.0	+37.0						
47	109.35	100.64	8.71	47+38.5	+99.5	+97.5	#30	#46	804 S Broadway	803 S. Topoka	4-22-34	3-26-06
					+74.0	+76.0	#358	#151	807 S. R. Topoka		6-9-06	7-6-91
					+50.5	+48.5						
46	110.35	100.54	9.71	48.0 O.H.	+85.0	+83.0	#50	#50	no record	no record	5-20-01	5-30-91
					+100.0							
					+79.0	+98.0	#185	#190	no record	815 S. Topoka	3-22-11	3-16-22
					+51.0	+77.0	50 C37402		828-22 S. Broadway		3-23-73	
					+88.0	+99.0	#49		824 S. Broadway		4-24-05	
45	110.01	100.44	9.57	49.0	+100.0	+86.0	3493	#69	822 S. Broadway	no record	6-23-83	3-2-94
				44+90.0		+98.0						
					+73.0	+71.0	159 C37404	#48	826-28 S. Broadway	827 S. Topoka	2-23-73	11-12-93
					+88.0	+46.0						
44	109.13	100.34	8.79	44	+82.0	+80.0						
					+96.5	+94.5						
				47+64.5 O.H.	+71.5	+69.5	#271		830 S. Broadway		5-10-10	
					+45.5	+43.5	#71		852 S. Broadway		2-2-20	
43	108.63	100.24	8.39		+82.0	+80.0						
				+47.0		+17		#28	903 S. Topoka		4-22-71	2-13-18
					+23.5	+23.5	#23907		900 S. Broadway		11-5-03	8-14-00
42	108.52	100.14	8.38		+82.0	+80.0	#1445		311 S. Albany Indianapolis		10-10-69	
					+76.5	+74.5	#596		906 S. Broadway		11-8-10	
				+300 O.H.	+51.0	+49.0						
41	108.68	100.04	8.64		+88.0	+86.0	1316	#148	920 S. Broadway	915 S. Topoka	9-22-80	3-13-10
					+99.0	+98.0					5-19-03	8-13-00
					+77.0	+75.0	#8183		916 S. Broadway		5-2-88	
					+52.0	+50.0	20238	#66	916 S. Broadway	923 S. Topoka	9-15-03	9-12-00
				+13.5 O.H.	+86.5	+84.5					5-17-99	
40	108.22	99.94	8.28	40	+81.5	+79.0	50 31839		924 S. Broadway		4/25/72	
					+76.0	+99.0	25024		926 S. Broadway		6/22/71	
					+50.5	+74.0	C36258		928 S. Broadway		12-5-72	
39	108.07	99.84	8.23	39+	+86.0	+84.0						
				38+93.0		+99.0						
					+65.0	+73.5	#176		943 S. Topoka		4-12-04	8-13-06
					+51.0	+49.0						
38	108.49	99.74	8.75	408.0 O.H.	+85.5	+83.5	#11		943 S. Topoka			2-18-93

nc C 61518-6-9-77-Backus Roadcut - 803 S. Topoka (47+43.5)

nc C 23029-960 S. Broadway - 2-19-71 - Old Henning (42+11) + 78' N on private property

- #1251-211 E. Indianapolis - 10-10-89 - W.A. Zahorek - Private Line
- #461-902 S. Broadway - 10-29-36 - M.L. Lansdowne - Tap
- #1276-615 1/2 S. Topoka - 12-20-59 - C.W. Hyatt - Tap
- #2164-317 E. Orme - 3-23-40 - Texas Hanna - Tap
- #1226-930 1/2 S. Broadway - T-3-54 - Tap
- #1648 - Tap - 313 E. Indianapolis - 12-6-48 - J.N. Hanna
- #1389 - Tap - 312 E. Gilbert - 6-24-50 - W.B. Carter
- #2130 - Tap - 940 S. Broadway - 8-30-50 - W.B. Carter
- #3839 - Tap - 824 S. Broadway - 2-10-51 - Vaughn Plbg. (see above)
- #4012 - Private Line - Trailer - 820 S. Broadway - 2-4-53 - Vaughn - (see above)
- 5091 Tap 800 S. Broadway
- 5092 Tap 800 S. Broadway

#2355 3-27-92 308 S. Indianapolis - Bob Scott -