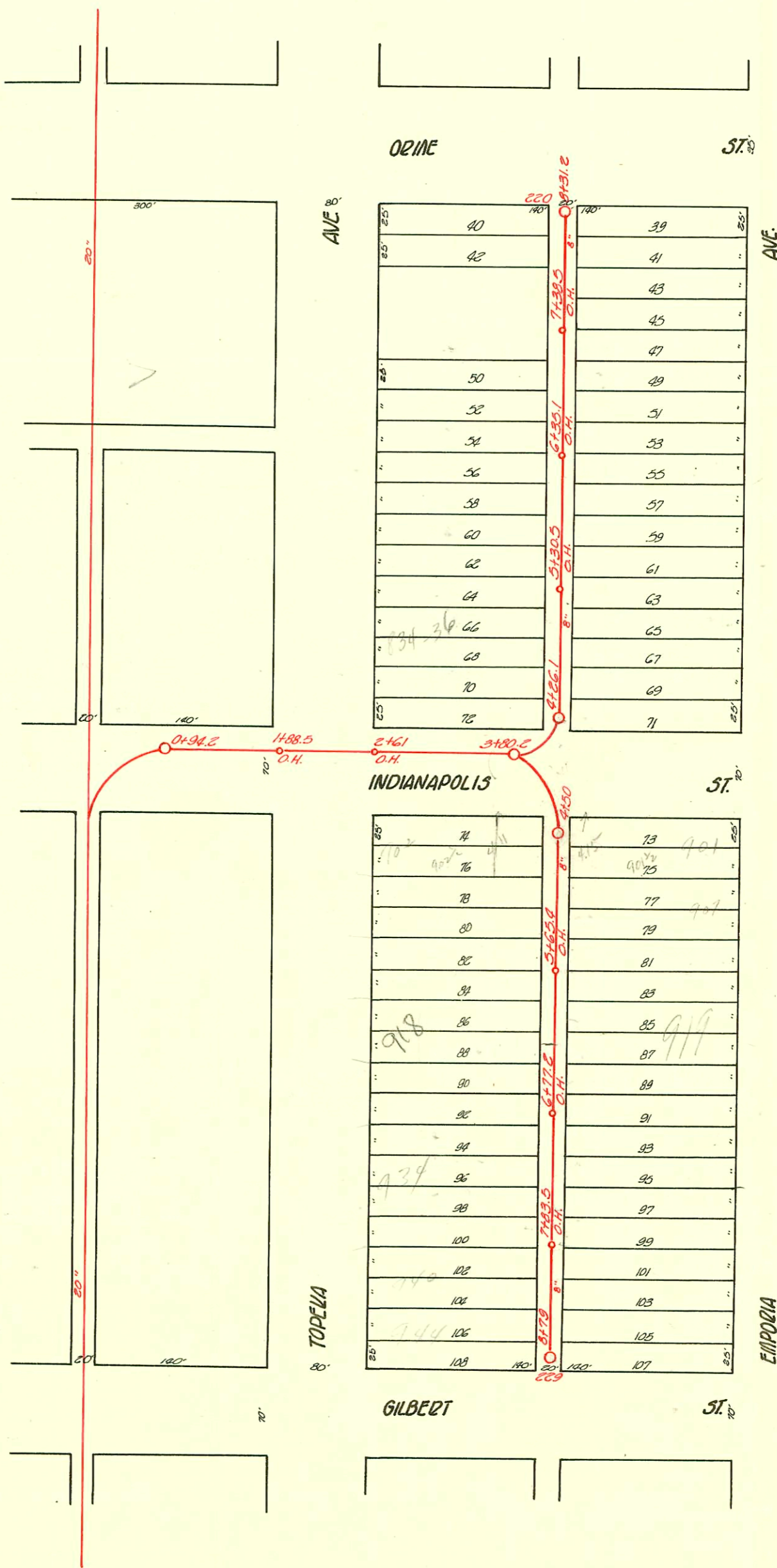


Plat 9-56

TRAP AREA

EAST SUB MAIN "B" ON INDIANAPOLIS ST. & LAT. N. & S.
S.S. #1-1889



SWR2004-02142-921 S Emporia - Full replacement - w/ @ 215' N 3/4 MI, 4" trap, 1" clo, (2) 45H - 8/ps/du - Bammes

CONSTRUCTION RECORD

SERVICE RECORD

STATION	ELEVATION		Depth	MANHOLE	4-INCH "Y" BRANCHES		No. of Permit		House Number		DATE OF PERMITS	
	Ground	Grade			North West	South East	North West	South East	North West	South East	North West	South East
				+790 O.H.								
8	108.16	102.60	5.56	8 +69.0 8 +45.5 8 +19.5 7 +83.5 O.H.	+71.0 +47.5 +21.5 +97.5	#490 #72 #347 #107	#98 #644	939 S. Emporia N.E. cor. Topeka (alt. 2' in) Cherry St. E. 936 S. Topeka 932 S. Topeka	9-5-13 7-18-91 7-20-12 6-18-07 9-27-22	5-20-08 10-14-09		
7	107.98	102.12	5.86	7 +71.0 7 +45.8 7 +21.5 6 +77.2 O.H.	+73.0 +47.8 +23.5 +98.0	#1257 #466 #637 #222	#102 #102	935 S. Emporia 928 S. Topeka 924 S. Topeka 925 S. Emporia	11-19-91 4-14-10	11-14-02 2-26-64 5-25-08		
6	107.90	101.64	6.26	6 +72.0 6 +47.0 6 +22.0 5 +95.5 5 +65.4 O.H.	+74.0 +49.0 +24.0 +97.5 +74.0	#19292 #397 #383 #735	#438	922 S. Topeka 915 S. Emporia 912 S. Topeka	10-12-87 8-31-15 7-6-02 12-5-41	7-16-09		
5	107.96	101.16	6.80	5 +46.0 5 +22.0 4 +95.5 4 +71.0	+48.0 +24.0 +97.5 +73.0	#395 #395 #160 #199	#287 #395	906 S. Emporia 915 S. Emporia 902 S. Topeka 901 S. Emporia	8-30-12 5-18-11 3-16-11 8-9-17	3-12-02 6-26-09		
4	108.24	100.92	7.32	4 +50.0 4 +53.5	+55.5	#374	#186					

8	107.68	102.60	5.08	+31.2 FT. +27.0 +00.5	+25.0 +98.5	12779		810 S. Topeka 803 S. Emporia 805 S. Emporia	12-12-84 5-29-01	4-10-68 6-18-02	
7	107.78	102.12	5.66	+38.5 O.H. +26.6 +02.0 +76.4 +35.1 O.H.	+49.0 +24.6 +00.0 +74.4 +50.0	#? #469 #15 #1600	#36	809 S. Emporia 818 S. Topeka 815 S. Emporia 815 S. Emporia	5-10-01 7-7-17	3-13-08 3-29-95 3-15-77 8-2-54	
6	107.53	101.64	5.89	+25.5 +01.5 +75.1 +30.5 O.H.	+23.5 +99.5 +73.1 +49.3	#228 #26 #617 #767	#26	820 S. Topeka 824 S. Topeka 830 S. Topeka	11-1-06 4-9-02 9-28-09 6-18-29	4-18-91	
5	107.55	101.16	6.39	+03.0 +76.7 +52.0	+01.0 +74.7 +50.0	#5720 #156	#76	830 S. Topeka 838 S. Topeka	4-10-01 7-6-53 9-29-94	4-10-01	
4	107.57	100.81	6.76	+26.1 +32.2	+30.2			839 S. Emporia			
3	107.80	100.58	7.22	+80.2							
2	108.61	100.40	8.21	+61.0 O.H.							
1	108.08	100.30	7.78	+88.5 O.H.							
0	108.15	100.29	7.86	+94.2							

2001-01240-5(18)01-902 S Topeka - Roto - 4" SCH40 Replace 10' in middle of line

#11547- (933 S Emporia) - Henning - 12-30-76

#16135 912 S Topeka (Brammer) 4-21-86 (7+46.6)

170383 (939 S. Emporia) - Seal Off - 2-15-79 - Henning (7+69)

27803-803 S Emporia - Base - 2-15-79 - Henning (7+92.2)

- #2999 - Tap - 419 E. Orme - Cherry Plbg. - 11-10-42
- #2049 - Tap - 825 S. Emporia - 5-22-45 - Jim Hanna
- #2377 - Tap - 825 S. Topeka - 10-31-45 - Ray W. Day
- #372 - Tap - 417 E. Indianapolis - 7-8-46 - J.E. Conardone
- #6302 - Wye - 843 S. Emporia - Riggs Plbg. 12-20-55
- #1294 - Tap - 820 1/2 S. Topeka - 10-5-49 - J.E. Laughlin
- #3533 - Tap - 412 E. Indianapolis - 15-16-58 - Frederick Plbg. Co.
- 82776 bond wye 939 S Topeka (Maywood) 10-15-88, 7+67 (Admin to church)

#1717 12/16/91 (802 S. Topeka) - Lubbock -
(wye 7' S of alk
6" clay edge of alk w/ sub)