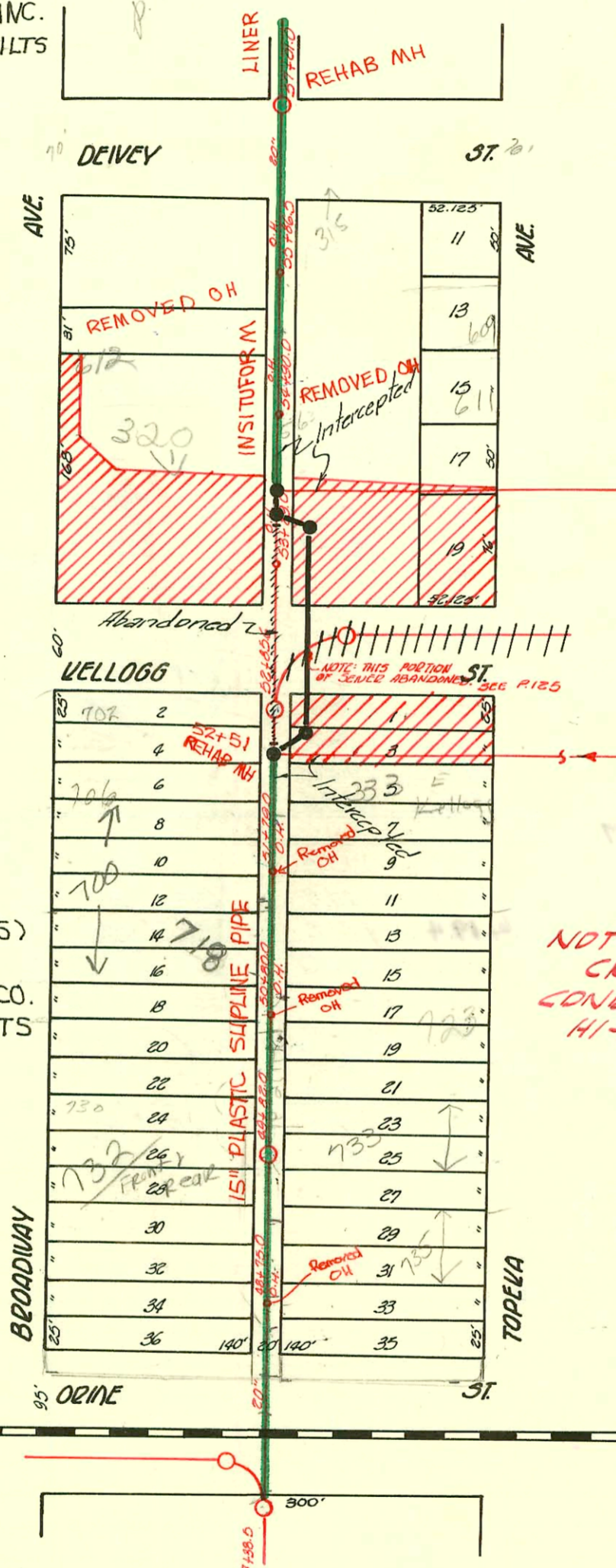


TRAP AREA

MAIN "B" ON ORME ST. TO MORRIS ST. N.
S.S. #1-1889

Plat 9-53

RECONSTRUCT SANITARY SEWER 1 AND 20 (SOUTH OF DOUGLAS)
PROJ. NO. 468-81996 (630541)
BUILT BY INSITUFORM PLAINS, INC.
BOOKED 12-4-92 FROM AS BUILTS



RECONSTRUCT SANITARY SEWER NO. 1 AND 20 (SOUTH OF DOUGLAS)
PROJ. NO. 468-81996 (630541)
BUILT BY W. B. CARTER CONST. CO.
BOOKED 12-3-92 FROM AS BUILTS

(15" HDPE, Drisco,
16" O.D. SDR 32.5)

NOTE:
CROSS-HATCHED AREA
CONDEMNED FOR U.S. 54
HI-WAY RIW.

RECONNECTIONS

STATION	ADDRESS	DIRECTION
55+04.1	612 S. Broadway	West
55+10.8	320 E. Kellogg	East
55+19	320 E. Kellogg	East
55+26.7	612 S. Broadway	West
55+49.4	320 E. Kellogg	East
55+76.3	320 E. Kellogg	East

98 1577
75-16976-7 2-4-98 165 Attached
10-26-95 735 S
K R
Topeka - 20' removal of curb - R. D. Campbell: kept 10' from edge of paved alley, re-walk house 6" SDR35. Did not uncover trap

