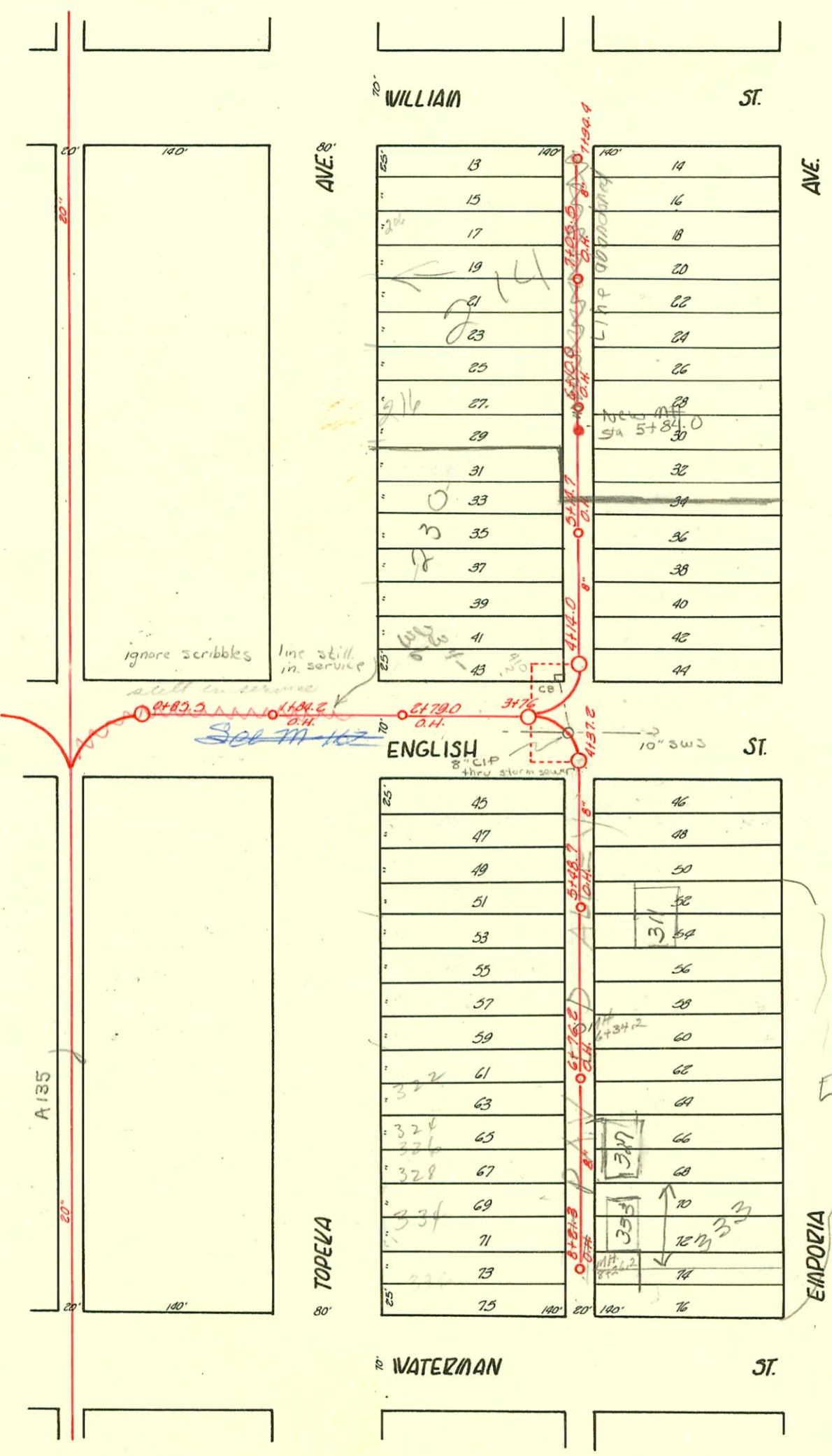


TRAP AREA

EAST SUB MAIN "B" ON ENGLISH ST. & LAT. N. & S.
S.S. #1-1889

Plat. 9-53



Every credit
Auto

CONSTRUCTION RECORD						SERVICE RECORD						
STATION	ELEVATION		Depth	MANHOLE	4-INCH "Y" BRANCHES		No. of Permit		House Number		DATE OF PERMITS	
	Ground	Grade			North West	South East	North West	South East	North West	South East	North West	South East
	108.79	105.49	3.30	+92.4 O.H.								
					+92.5	+90.5	#140		200 S. Jopoka		12-13-74	
					+69.0	+67.8	#118	#653	201 S. Emporia		8-6-05	5-12-99
7	108.85	105.85	3.00	+105.5 O.H.	+45.2	+43.2	#363		208 S. Jopoka		7-23-15	6-5-29
					+95.4	+93.4	#59		242 S. Jopoka		6-18-98	
					+70.4	+68.4	#107		214-16 S. Jopoka	213 S. Emporia	8-17-22	3-29-16
6	107.65	105.00	2.65	+10.0 O.H.	+80.8	+18.8	#1030	#107	214-16 S. Jopoka		8-17-22	3-29-16
					+93.5	+91.5	#350	#401	214-16 S. Jopoka	228 S. Emporia	7-29-18	9-28-16
				6" stub N 5+84.005	+68.7	+66.7	#282	#30	228 S. Emporia	No Record	7-22-04	3-3-99 2-5-04
					+44.0	+42.0	#107		229 S. Emporia		8-25-03	
5	107.16	104.75	2.41	+14.7 O.H.	+19.0	+17.0	#229	#520	229 S. Emporia		11-24-05	7-23-17
					+94.1	+92.1	#187		234 S. Jopoka		9-8-26	7-6-00
					+69.6	+67.6	#187		234 S. Jopoka		4-29-18	
4	106.73	104.50	2.23	+14.0	+42.8	+42.8	#1570	#309	234 S. Jopoka	239 S. Emporia	9-24-79	11-5-01
					+61.8	+19.8			248 S. Topoka		11-20-22	8-16-04
8	106.00	105.55	0.45	+61.3 O.H.								
		105.50	0.50		+17.3	+19.3	#2165		332-34 S. Jopoka		1-20-60	5-3-91
					+90.0	+92.0	#378	#108	334 S. Jopoka	No Record	8-3-67	6-21-25
					+66.8	+68.8	#368		335 S. Emporia		6-24-10	
					+42.0	+44.0	#4522	#311	336 S. Jopoka	333 S. Emporia	1-30-06	3-19-55
7	105.62	105.25	0.37		+15.8	+17.8	#1596	#311	336 S. Jopoka	333 S. Emporia	8-29-23	8-18-04
				+76.2 O.H.	+90.4	+92.4	#207	#619	338 S. Jopoka	325 S. Emporia	3-18-04	7-18-21
					+63.3	+68.3	#361		338 S. Jopoka	No Record	6-10-02	
					+41.3	+43.3	#180	#6	320 S. Jopoka	319 S. Emporia	9-22-05	1-20-03
6	106.36	105.00	1.30		+16.5	+18.5	#127		318 S. Jopoka		7-5-07	
					+90.0	+92.0	#27		316 S. Jopoka		2-25-18	
				+48.7 O.H.	+65.4	+67.4	#5	#?	304 S. Topoka		1-11-35	8-28-01
					+40.5	+42.5	#2516	#299	318 S. Jopoka	311 S. Emporia	9-28-50	1-31-69
5	106.48	104.75	1.73		+16.0	+18.0	#100	#100	312 S. Jopoka	311 S. Emporia	8-4-04	3-13-17
					+90.5	+92.5	#14947	#196	300 S. Jopoka	309 S. Emporia	7-15-69	1-15-10
					+65.5	+67.5	#405	#1526	302 S. Emporia	417 E. English	6-9-27	11-13-22
4	106.86	104.50	2.36	+37.2	+40.5	+42.5						
3	106.50	104.25	2.25	+76.0								
2	107.26	104.00	3.26	+79.0 O.H.								
1	107.05	103.75	3.30	+84.2 O.H.								
0	107.08	103.50	3.58	+85.5	+120.5 N.		#43		S.W. Cor. Jopoka & English			4-10-07

2002-0270 10716a 333 S Emporia - Wichita Exc - 106' N of MH 81a1 (7115.3) Preeco Saddle, twin CO, 4" sch 40, trap

C 40018 - 206 S. Jopoka - 7-12-43 - at Newton (7+09.5)
 C 14947 - 300 S. Jopoka - Hemco Cellog - 7-15-69 - tap (4+54.2)

#698 - Tap - 208 S. Topoka - 2-2-38 - C.C. McLaughlin
 #1830 - Tap - 218 S. Topoka - 11-22-44 - Virgil Thompson
 Private Line - 221 S. Emporia - Dermody - 10-26-45

42-3464-7. 214 S. TOPOKA (MTA TRANSIT CENTER)

MH 5+84.0 - 6" stub N - 214 S. TOPOKA (TRANSIT CENTER Terminal Bldg) Connected into 6" stub - 103-97

9718352 92-036381-0701 - 214 S. Topoka - 4" SDR35 - 6" MH top by city - 1/8" pf shallow - 10/25/92

95-16027 2-6-95 230 S. Topoka - wye STA 5+67.5 - 4" ABS inst C.O. and Repair TRAP