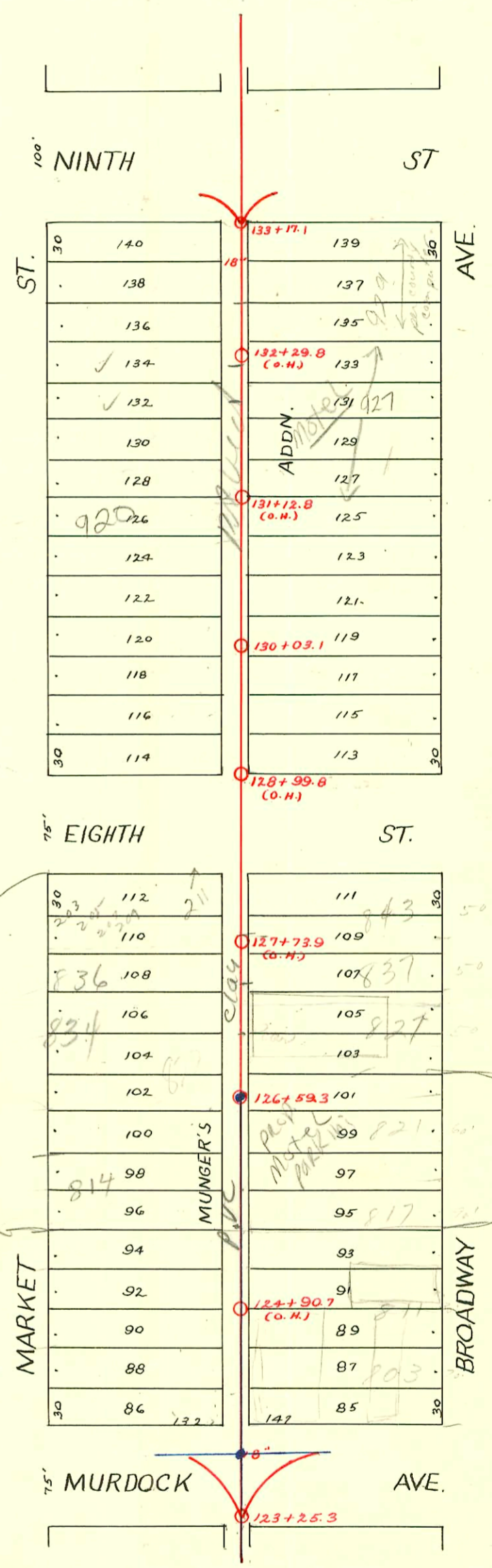


MAIN "B" from MURDOCK AVE. to NINTH ST.
S.S. No. 1 - 1889

TRAP AREA

Plat 9-46



Murdock Sanitary Sewer Replacement
468-82707 OCA # 021763
from Wichita to Wabash

- SWR 2006-03328 - 930 N Market sp - 110' 5" MH - 1-4-07 - Arambula Drain + SWR
- SWR 2006-03327 - 928 N Market sp - 152' 5" MH - 1-4-07 - Arambula Drain + SWR
- SWR 2006-03329 - 288 E 8th sp - 39' 5" MH - 1-4-07 - Arambula Drain + SWR

CONSTRUCTION RECORD						SERVICE RECORD						
STATION	ELEVATION		Depth	MANHOLE	4-INCH "Y" BRANCHES		No. of Permit		House Number		DATE OF PERMITS	
	Ground	Grade			North West	South East	North West	South East	North West	South East	North West	South East
133	113.86	109.24	4.62	133+17.1	133+00.5							
					132+98.5							
					132+70.0							
					132+39.5							
132	113.88	109.14	4.74	132+08.6	132+06.6							
					131+77.6							
					131+47.1							
131	114.35	109.04	5.31	131+16.5	131+14.5							
					130+89.5							
					130+54.3							
					130+23.8							
130	114.39	108.94	5.45	130+03.0	130+12.0							
					129+64.0							
					129+34.0							
129	114.39	108.84	5.55	129+03.3	129+01.3							
128	114.74	108.74	6.00	128+01.0								
					127+99.0							
					127+71.5							
					127+40.5							
127	114.95	108.64	6.31	127+09.8	127+07.8							
					126+59.3							
					126+29.1							
					126+57.8							
126	114.15	108.54	5.61	126+21.0	126+19.0							
					125+89.9							
					125+58.5							
					125+28.1							
125	113.90	108.44	5.46	125+01.2	125+07.5							
					124+78.5							
					124+53.5							
					124+29.3							
124	113.80	108.34	5.46	124+04.7	124+02.7							
123				123+25.3								

SWR 2001-01430 - 81401 848 N. Market (Interfairville Apts) Budget Sewer = 4" SCH 40
 Preco 7.4' sof MH 126+57.3 (126+51.9) 2-way co, trap, 2445, 1045.

SWR 2001-01430 - 203-209 E 8th St - Bob Scott - Sealed w/ concrete, 81.2' N of MH 126+59.3 (127+40.5)
 SWR 2001-01431 - 211 E 8th St 5/0 - Bob Scott - Sealed w/ concrete 112' N of MH 126+57.3 (127+71.3)
 SWR 2001-01432 - 822 N Market - Bob Scott - Sealed w/ concrete 30' sof MH 126+57.3 (126+27.3)

3000-01303-5130100 - 841 N Broadway - AE Henning - Repl trap & Rep Co 4" SCH 40 (no manht)

4274 - 837 N Market - 10-8-81 AE Henning 30' sof MH (133+79.1)

7103 - 834 N Market - AE Henning - 2-29-68 (127+09.8)

14170 - 821 N Broadway - AE Henning - 5-20-69 (126+44)

690 & # 691 - In private line - 904 & 908 N. Market - 6-26-25

1708 - Tap - 856 N. Market - 7-15-39 - O.W. Stinnett

1118 - Tap - 821 N. Broadway - 3-5-42 - Simmons P/bg.

1358 - Private line - 925 1/2 N. Broadway - 1-19-44 - Frederick P/bg.

3572 - Tap - 923 N. Broadway - 1-4-51 - Coleman P/bg. Co.

6662 - Tap - 211 E. 9th - 11-29-51 - Howard Cowan

779 - Tap - 918 1/2 N. Market - 4-26-54 - Callison P/bg. Co.

12699 - Private line location 822 N. Market - trailer - Frederick P/bg. Co. 4-25-60

12517 - Trailer - 4-20-60 (126+25.3)

22937 - Sewer - 927 N Broadway - J.C. Lewis - 3-9-65

B 2946 - Sewer - 935 N Broadway - J.C. Lewis - 3-9-65

3061 - Tap - 837 N. Broadway - 4/8/65 Lee's P/bg (127+81.0)

B 4816 - 204 E. Milwaukee - Joe's Sewer Service 12-22-65 (Tap 124+25.3)

1744 - 12/10/86 (927 N Broadway - 132109.1)

93-26394-7 927 N Broadway N/C - 10/8/83 - City tap - (131+23.1)
 120 Ft North of M.H. - 1-4" C.O.; 1-4" trap; 4" ABS