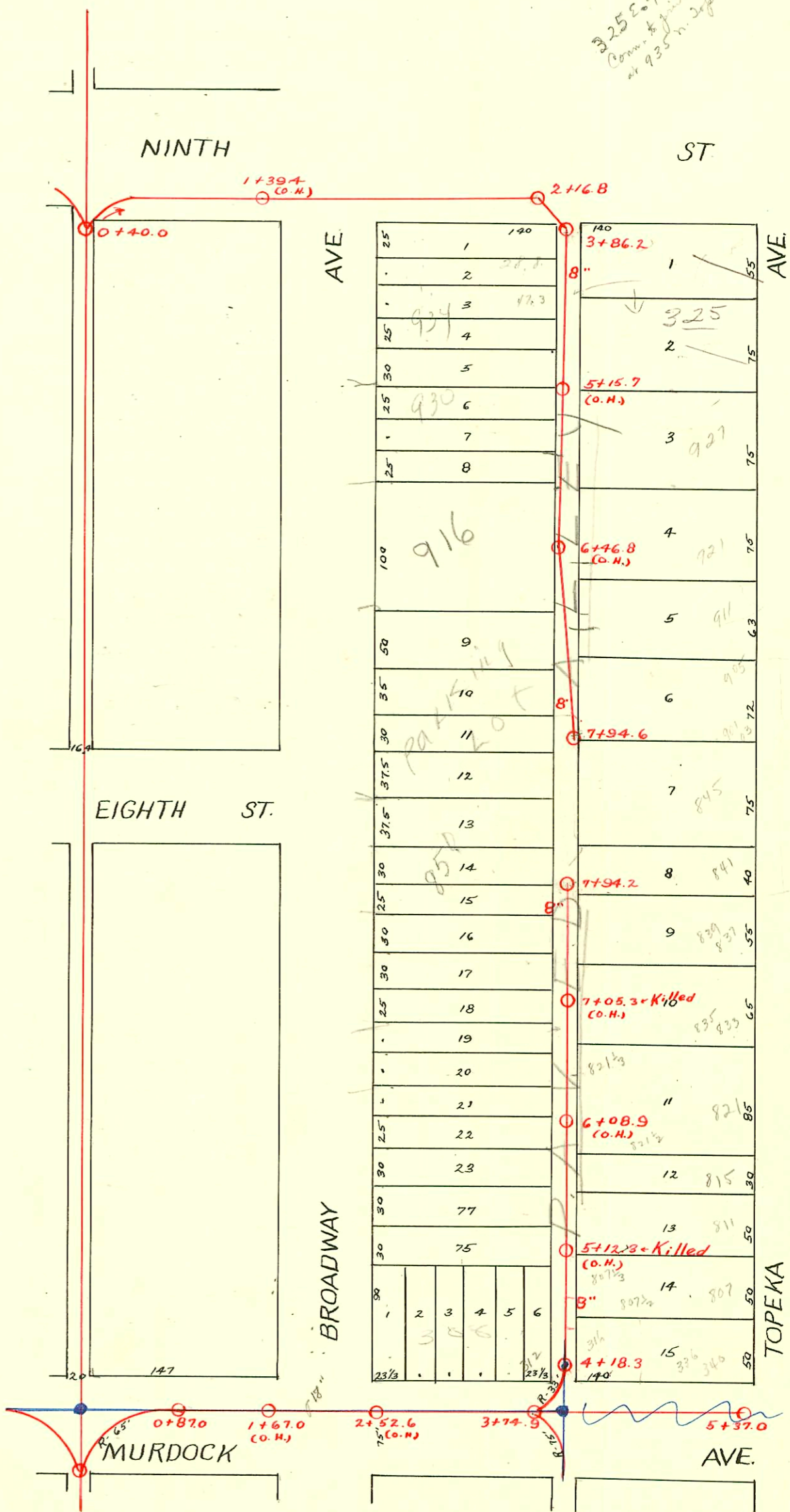


EAST SUB-MAIN "B" on MURDOCK AVE. and LAT. A
EAST SUB-MAIN "B" on NINTH ST. and LAT. S.
S.S. No. 1-1889

TRAP AREA

Plat 9-49

325 E. 9th
Corner of 9th and
at 935 N. Broadway



Murdock Sanitary Sewer Replacement
from Wichita to Wobash
#68-B2707 OCA # 621763

#25682 7-9-90 910-12 W. Broadway - ALVIN Henning - 6" clay tile line already
sealed off 85' N. of M.H. and 11' from M.H.

CONSTRUCTION RECORD

SERVICE RECORD

STATION	ELEVATION		Depth	MANHOLE	4-INCH "Y" BRANCHES		No. of Permit		House Number		DATE OF PERMITS	
	Ground	Grade			North West	South East	North West	South East	North West	South East	North West	South East
	114.43	111.79	2.64	7+94.6								
						7+81.0		S/C 41156 #41	901-03 71 Topoka			9-11-73 3-10-94
						7+79.0	7+58.0					
						7+56.0	7+33.5	S/C 41157 #158	905 71 Topoka			9-11-73 5-11-07
7	115.22	111.54	3.68			7+31.5	7+09.0					12-10-90
						7+07.0	7+01.0					
						6+83.5						
						6+59.5	6+61.5	#633	923 N. Topoka			3-9-81
						6+49.5						
							6+37.5					
6	114.28	111.29	2.99			6+11.5	6+13.5	#124				8-28-17
						6+03.2		#633	912 71 Topoka			8-28-17
						5+97.5	5+97.5	#314	928 N. Topoka			5-21-91
						5+69.2		#1285	Broadway			8-24-04
						5+65.0	5+67.0					12-10-90
						5+40.5	5+42.5					
						5+17.0	5+24.5	S/C 41159 #81	927 71 Topoka			9-11-73
						4+88.0	4+90.0	#4327	325 N. Topoka			7-24-91
						4+62.0	4+64.0					4-3-69
						4+37.5	4+33.5	#127	928 N. Topoka			12-10-90
						4+13.0	4+15.0	#651	Broadway			3-30-93
4								#31				
3	114.55	110.54	4.01	3+86.2		3+89.5	3+91.5	#406				7-11-16
2	114.22	110.14	4.08	2+16.8								
1	114.16	109.89	4.27									
0	113.89	109.74	4.15	0+40.0								
(Moved from 8+00.7 8-2-40)												
8	114.62	110.40	4.22	7+94.2								
						7+95.0	7+93.0	#431	850 N. Topoka			5-11-11
						7+73.7	7+71.7	#2403	833 N. Topoka			8-8-92
						7+43.8	7+41.8					
7	114.32	110.00	4.32			7+13.8	7+11.8	#109	841 71 Topoka			6-21-05
						6+83.4	6+81.4	#465	835 71 Topoka			1-9-69
						6+53.0	6+51.0	#12125	835 N. Topoka			5-28-00
						6+23.5	6+21.5					
						5+93.2	5+91.2	#461				9-14-15
						5+62.2	5+60.2					
						5+32.6	5+30.6	#95	811 N. Topoka			8-15-91
5	114.09	109.20	4.89			5+02.5	5+00.5	#63	807 N. Topoka			10-15-72
						4+74.5						5-15-93
						4+47.0	4+50.0	#20109	812 E. Murdock			2-16-88
						4+21.8		#507	810 E. Murdock			7-19-17
4	113.57	108.89	4.68	4+18.3								
						5+37.0						
						5+26.0	5+24.0					
5	114.09	109.20	4.89			5+04.0	5+02.0					
						4+82.3	4+80.3					
						4+60.0	4+58.0					
						4+37.7	4+35.7					
4						4+15.6	4+13.6					
						3+74.9						
						3+65.4						
						3+43.5	3+63.4					
						3+22.2	3+41.5					
3	112.91	108.51	4.40			3+00.3	3+20.2					
							2+98.3					
						2+78.2	2+76.2	#135				8-7-94
						2+57.0	2+55.0					
2	113.46	109.26	5.20			1+52.0	1+50.0					
						1+32.3	1+30.3					
						1+12.8	1+10.8					
1	113.09	108.98	4.11	0+87.0		0+92.8	0+90.8					
						0+66.0	0+64.0					

2002-03049-1112102-Rons Pibg-850 N Broadway-6" Wye 20.5'S of MH (7+73.7) 6x4 Fernco, 2H 4S, trap, TWINCO, Fernco

C69024 S. Off-815 N. Topoka - Henning 10-23-78
 S.D. C50811-841 N. Topoka - 8-12-75 - at Henning
 S.D. C46627-824-24 1/2 N. Topoka - 9-12-74 - at Henning
 S.D. C42805-904 N. Broadway - 12-17-73 - at Henning (6+44.6)
 C12125 - Seal off 835 N. Topoka - Frederick Alley 1-9-69 - See new record
 #4786 - Seiffing Wye - 938 N. Broadway - 4-13-53 - R. LaFoy - Seal off - C14128 - 938 N. Broadway - 5-16-69 - at Henning (4+20.5)
 #489 - Used old connection - 7-22-47 - Callison Pibg. Co. - (340 E. Murdock - 94-11224-7 - 5/2 4+56.9) / connect 4+46 West
 #1784 - Private line - 9-23-49 - Baker Pibg. Co. - 821 N. Topoka
 #6914 - Tap - 305 E. 9th - 12-27-51 - R. LaFoy
 seal off C41157/6192 - (45 N. Topoka) - Bernady Alley - 9-28-66 - Top - N. V. 7+94.6 9/11/73
 seal off C-22661 - 821 N. Topoka - at Henning - 1-22-71 (6+18.5) also sealed 821 N. Topoka (same line)
 seal off - C-70362 - 839 N. Topoka - W. Henning - 2-27-77 (5+60.9)
 7/12 C40363 839 N. Topoka - W. Henning - 2-27-79 (top 7+73.6) #19142 - 9/24/87 - (906 N. Broadway) S/O 4+11.11 - Sealed
 51' from same property
 line and S' say UPL