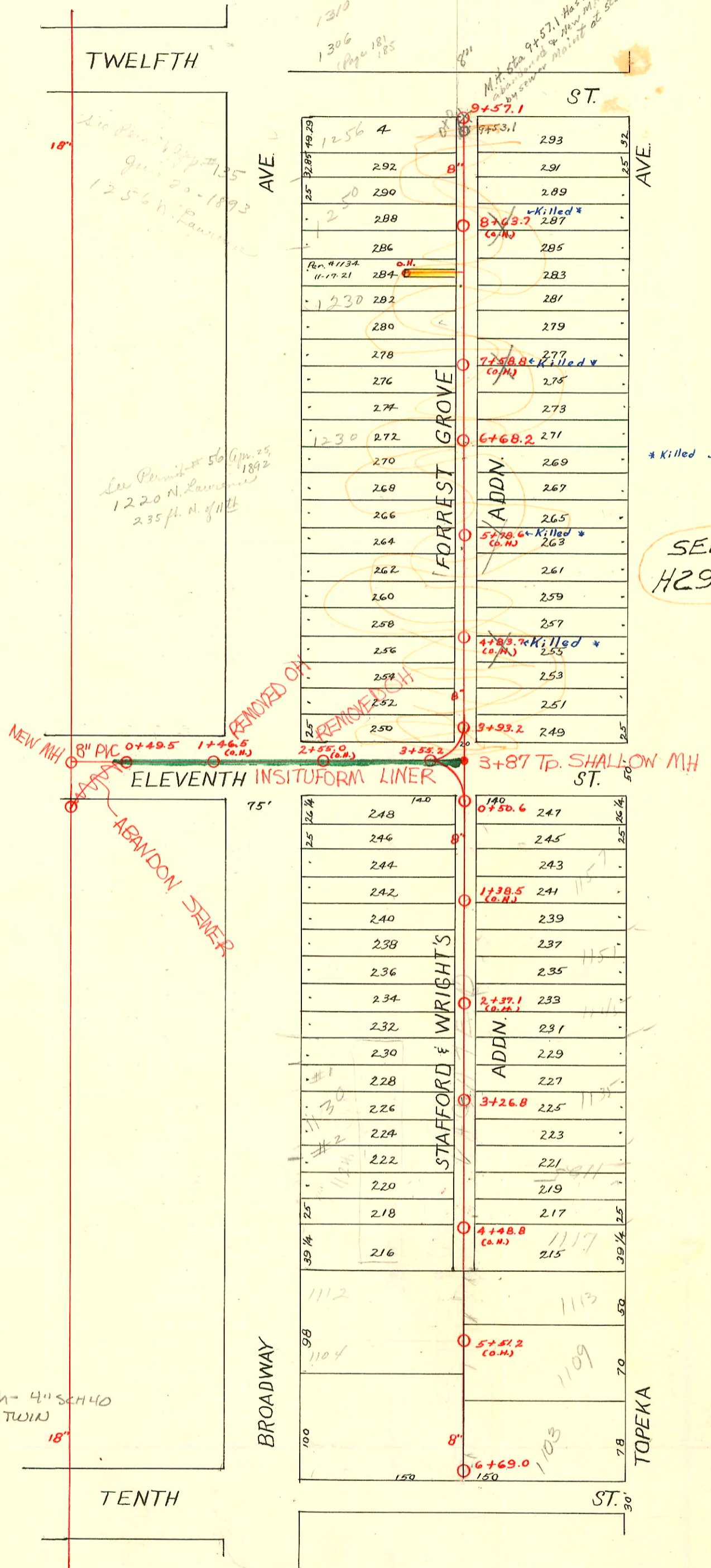


EAST SUB-MAIN "B" on ELEVENTH ST. and LAT. A & S
S.S. No. 1 - 1889

Plat 9-44

TRAP AREA



1995 SANITARY SEWER REHABILITATION
PROGRAM - PHASE III
PROJ. NO. N/A (621078)
BUILT BY INSITUFORM PLAINS, INC.
BOOKED 9-25-95 FROM AS BUILTS

1995 SANITARY SEWER REHABILITATION
PROGRAM - PHASE II
PROJ. NO. N/A (621060)
BUILT BY W. B. CARTER CONST. CO.
BOOKED 2-20-96 FROM AS BUILTS

99-2117-7 2/1/99 - 1150 N Broadway - Comm'l Mech - 4" SCH 40
Grease Interceptor - Tied back to bldg drain - 2 TWIN
CO, 6H45

SEE H296

* Killed 5-10-51

CONSTRUCTION RECORD						SERVICE RECORD						
STATION	ELEVATION		Depth	MANHOLE	4-INCH "Y" BRANCHES		No. of Permit		House Number		DATE OF PERMITS	
	Ground	Grade			North West	South East	North West	South East	North West	South East	North West	South East
				6 + 69.0								
				6 + 64.7	6 + 62.7							5-21-99
				6 + 40.4	6 + 38.4							
6	116.97	113.64	3.33	6 + 16.2	6 + 14.2		9360		1103 N. Topeka			10-4-83
				5 + 91.8	5 + 89.8	#494						
				5 + 67.2	5 + 75.2	2221						
				5 + 43.0	5 + 41.0	6898						
5	117.42	113.41	4.01	5 + 19.0	5 + 17.0				1104 N. Broadway		5-31-11	
				4 + 94.8	4 + 92.8				1109 N. Topeka		12-14-88	
				4 + 70.4	4 + 64.8						11-9-53	9-25-91
				4 + 46.8	4 + 44.8						10-4-83	5-1-50
4	117.54	113.16	4.38	4 + 20.4	4 + 18.4							
				3 + 96.4	3 + 94.0							
				3 + 72.0	3 + 70.0							
3	117.74	112.91	4.83	3 + 26.8	3 + 24.8							
				3 + 47.8	3 + 45.8							
				3 + 21.5	3 + 19.5							
				2 + 97.4	2 + 95.4							
				2 + 73.0	2 + 71.0							
				2 + 35.3	2 + 33.3							
2	118.02	112.66	5.36	2 + 17.4	2 + 15.4							
				1 + 97.3	1 + 95.3							
				1 + 72.8	1 + 70.8							
				1 + 45.9	1 + 39.9							
1	118.42	112.41	6.01	1 + 13.8	1 + 11.8							
				0 + 93.9	0 + 95.9							
				0 + 67.6	0 + 80.0							
0	118.23	112.29	5.94	0 + 50.6	0 + 53.5							
				9 + 57.1								
				9 + 50.5	9 + 48.5							
				9 + 36.2	9 + 34.2							
9	117.46	113.53	3.93	9 + 12.4	9 + 10.4							
				8 + 74.0	8 + 72.0							
				8 + 36.6	8 + 34.6							
8	118.15	113.28	4.87	8 + 12.3	8 + 10.3							
				7 + 87.9	7 + 85.9							
				7 + 64.5	7 + 62.5							
				7 + 39.8	7 + 37.8							
7	118.12	113.03	5.09	7 + 15.3	7 + 13.3							
				6 + 68.2	6 + 91.0							
				6 + 62.4	6 + 60.4							
				6 + 41.5	6 + 39.5							
6	118.37	112.78	5.59	6 + 15.4	6 + 13.4							
				5 + 82.1	5 + 80.1							
				5 + 66.6	5 + 64.6							
				5 + 41.8	5 + 39.8							
5	118.41	112.53	5.88	5 + 15.9	5 + 13.9							
				4 + 93.2	4 + 91.2							
				4 + 69.2	4 + 67.2							
				4 + 42.6	4 + 40.6							
4	118.71	112.26	6.45	4 + 19.8	4 + 17.8							
				3 + 93.2	3 + 98.5							
3	117.97	112.16	5.81	3 + 55.2								
2	118.69	111.78	6.91									
1	118.78	111.53	7.25									
0	118.65	111.41	7.24	0 + 49.5								

#5794 1208 N. Broadway 5-6-82 (Stamp) 0493 N. of M. H. 0100 NC # 5805 1249 51 N. Topeka 5-6-82 (Stamp) 427 N. of M. H. 0100
 5795 1230 N. Broadway 5-6-82 (Stamp) 7211 5 corner from 0100: 1486
 5796 1232 N. Broadway 5-6-82 (Stamp) Restaurant 5177 N. of 0100 2439
 5797 1201 N. Topeka 5-6-82 (Stamp) 1408 N. of 0100 3425
 5798 1209 N. Topeka 5-6-82 (Stamp) 1440 N. of 0100 3465
 5799 1217 N. Topeka 5-6-82 (Stamp) 2442 N. of 0100 4455
 5800 1207 N. Topeka 5-6-82 (Stamp) 3433 N. of 0100
 5801 1233 N. Topeka 5-6-82 (Stamp) 3426 N. of 0100
 5802 1235 N. Topeka 5-6-82 (Stamp) 4457 N. of 0100
 5803 1237-39 N. Topeka dupl 5-6-82 (Stamp) 5132 N. of 0100
 5804 1245-47 N. Topeka dupl 5-6-82 (Stamp) 5104 N. of 0100
 C 67820 (1120 N. Broadway) 8-14-78 - Manning (4765.1)
 C 179932 - 1230 N. Broadway - Joe Spaulding (Restauriant) 7-2-74 tap (8+45.1)
 #B6137 - 1150 N. Broadway - Gray Bros - 8-5-66 - tap (1+32.2) (not all orders)
 Tap #1101 - 1157 N. Topeka - 8-19-29 - Long Plbg. Co.
 Tap #2500 - 1217 N. Topeka - 7-15-40 - W.B. Carter - connected at 5770.2
 Tap #1952 - 112A N. Broadway - 2-16-49 - Coleman Plbg. Co.
 #4261 - 1117 N. Topeka - 2-27-53 - Robinson Plbg. Co. - Private line trailer
 8355 608 W. Bradford 1112 N. Broadway 10-15-58, 4+86
 11336 608 W. Bradford 1230 N. Broadway 11-14-59 6+53.7
 15924 - 6 tap - Bowen - 3-5-11, 6-7-62 (4+37.2)
 Tap C 71004 - 130 N. Broadway - #45-79 (4+58.4)
 Tap C 71003 - 1130 N. Broadway - #1-4-3-79 (2+91.2)
 #01262 - 1125 N. Topeka (2.4-3126.8) 7-16-80 - Pearson