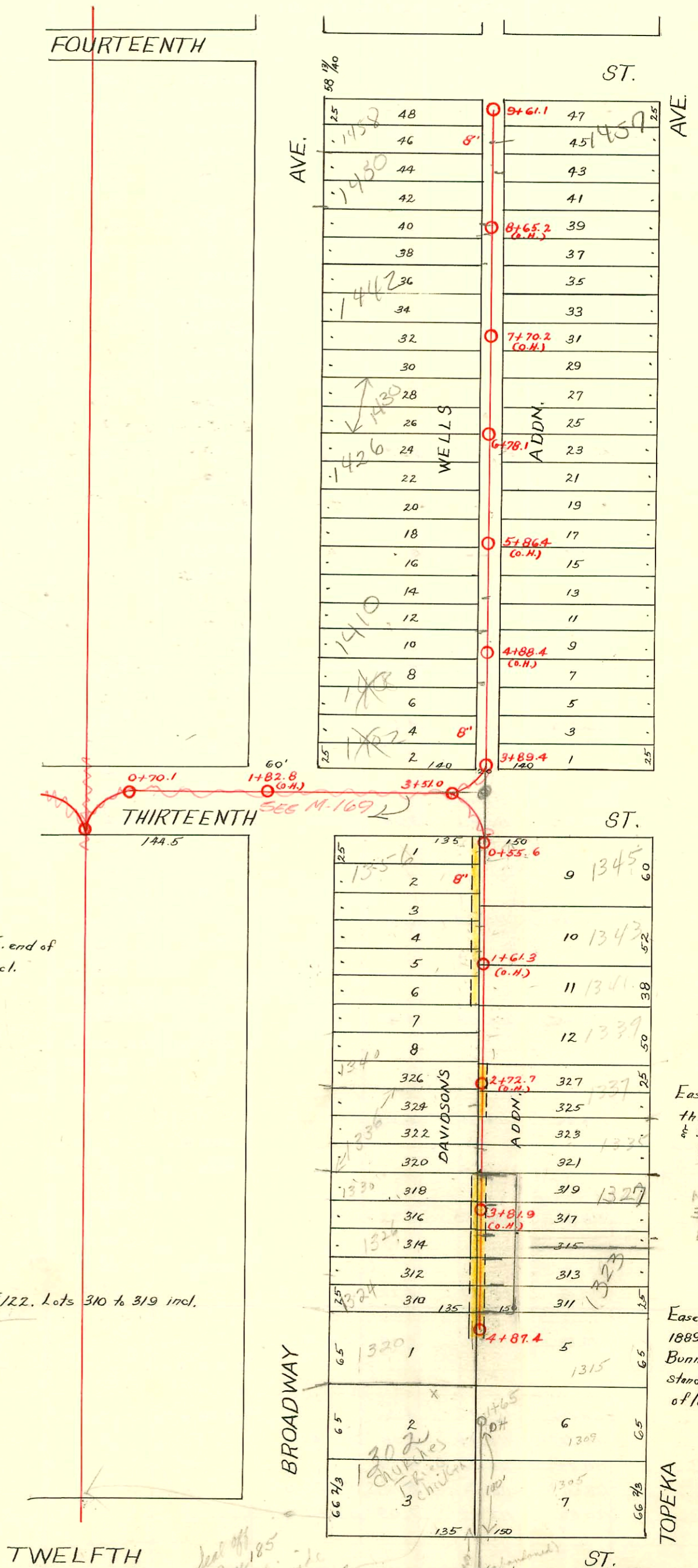


EAST SUB-MAIN "B" on THIRTEENTH ST. and LAT. A and S.
S.S. No. 1. - 1889

TRAP AREA

Plat 9-41



Easement #254 - E. end of
lots 1 to 8, odd & even incl.

Easement #122. Lots 310 to 319 incl.

Easement #213 - on &
thru W. 9' of lots 325
& 327
1327 N. 70th
E 116' of
N 15' of lot
315 and 2
116' of lots
317 & 319

Easement #64. March 29,
1889. Beg. 20' No. of where
Bunnell residence now
stands, thence N. to N.E.
of lots 1 & 5

1305 & 1309 are
connected to line
that flows south
E.P.

See p. 185
See p. 186
See p. 187
See p. 188
See p. 189
See p. 190
See p. 191
See p. 192
See p. 193
See p. 194
See p. 195
See p. 196
See p. 197
See p. 198
See p. 199
See p. 200

1426-28 N. Broadway 5/5/92 02-6360-7 (4" clay tile sealed 066 23' south of N.P.)
1324 1326 N Broadway 3-195 95-2725-7 510 at TRAP STA 4+57.4

CONSTRUCTION RECORD						SERVICE RECORD						
STATION	ELEVATION		Depth	MANHOLE	4-INCH "Y" BRANCHES		No. of Permit		House Number		DATE OF PERMITS	
	Ground	Grade			North West	South East	North West	South East	North West	South East	North West	South East
	115.98	114.70	1.28	4 + 874	4 + 83.8	4 + 85.8		#312 #218	1306 N. Lawrence		10-14-01 12-2-92	
					4 + 69.4	4 + 71.4						
					4 + 47.9	4 + 49.9						
					4 + 23.9	4 + 25.9		#430	1328 N. Broadway		10-11-16	
4	115.78	114.48	1.30		4 + 07.6	4 + 01.6		#19260		5-13-70		
					3 + 97.3	3 + 99.4						
					3 + 75.0	3 + 77.0		#11877	1336 N. Broadway		1-20-95	
					3 + 50.8	3 + 52.8						
3	116.06	114.23	1.83		3 + 26.3	3 + 28.3						
						3 + 01.6						
					2 + 91.3	2 + 91.3		21406	1336 N. Broadway		8/3/68	
					2 + 75.0	2 + 77.0						
					2 + 51.6	2 + 53.6						
					2 + 27.0	2 + 29.0		#992 #108	1340 N. Lawrence		8-2-68 5-3-94	
2	116.21	113.98	2.23		2 + 02.8	2 + 04.8		#54	1326 N. Broadway		3-8-16	
					1 + 78.8	1 + 80.8		#5337			10-11-67	
					1 + 54.3	1 + 56.3		#1592			3-14-47	
					1 + 30.5	1 + 32.5		#135			4-11-66	
1	116.58	113.73	2.85		1 + 05.9	1 + 07.9		#799	1356 N. Broadway	1339 N. Topeka	7-28-05 1-3-92	
					0 + 81.2	0 + 83.2		#64			4-29-54	
0	116.86	113.61	3.25	0 + 55.6	0 + 61.6	0 + 59.6		#132	1345 1/2 N. Topeka		6-19-63 8-9-50	
								#1897	St. Pauls Church			
	119.50	115.22	3.28	9 + 61.1	9 + 56.9	9 + 54.9		#4926	1460 N. Broadway		6-11-57	
					9 + 32.6	9 + 30.6		#980			7-6-23	
9	118.85	115.04	3.81		9 + 08.3	9 + 06.3		#749			5-17-23	
					8 + 82.2	8 + 80.2		#316			9-3-23	
					8 + 55.8	8 + 53.8		#5113	1446 N. Broadway		5-6-53	
					8 + 31.6	8 + 29.6		#194			6-20-01	
8	117.85	114.74	3.11		8 + 07.5	8 + 05.5		#194			3-17-22	
					7 + 83.2	7 + 81.2					8-21-01	
					7 + 59.0	7 + 57.0		#236			2-20-23	
					7 + 33.0	7 + 31.0					7-9-23	
7	117.90	114.44	3.46		7 + 08.7	7 + 06.7		#210	1430 N. Broadway	1433 N. Topeka	2-12-23	
				6 + 78.1	6 + 84.6	6 + 82.6		#1000			7-9-23	
					6 + 58.5	6 + 56.5		#118	1435 N. Topeka		6-28-07	
					6 + 34.9	6 + 32.9		#180	1421 N. Topeka		8-10-08	
6	117.95	114.14	3.81		6 + 09.5	6 + 07.5		#832			6-1-23	
					5 + 85.4	5 + 83.4		#12	1416 N. Broadway		2-3-54	
					5 + 61.1	5 + 59.1		#133	1420 N. Broadway		10-22-03	
					5 + 35.7	5 + 33.7		#2947	1414 N. Broadway		10-31-42	
5	116.95	113.84	3.11		5 + 11.8	5 + 09.8		#680	1410 N. Broadway		12-29-13	
					4 + 87.0	4 + 85.0					6-14-01	
					4 + 62.5	4 + 60.5		#159	1405 N. Broadway		10-15-94	
					4 + 39.6	4 + 37.6					9-14-03	
4	116.92	113.57	3.35		4 + 13.7	4 + 11.7		#507	1402 N. Broadway		8-12-09	
				3 + 89.4	3 + 95.5	3 + 93.5		#18			12-11-74	
3	116.84	113.48	3.36	3 + 51.0							12-29-09	
1	117.25	112.85	4.40								2-23-03	
0	117.13	112.78	4.35	0 + 70.1								

2001-00093-111601-1442 N Broadway - RediRostr-4" SCH40, Predco 153' N of MH 6+78.1(8+31.1) 170' IN CO, Trap Installed, 1V45, 2H22, 1H45

Tap C28952-1302 N. Broadway - 11-11-71 - Herb Hoover (1+40.2)

#92 - Tap - 308 E. 13th - 4-A-36 - Vernon Shollenberger #25612-6-29-90 (1335 N. Topeka) (Front House) - Bob Scott (3+25.4)

#2086 Tap - 1335 N. Topeka - 6-16-42 - Ray Bryant.

Tapped at 9+52.8-329 W. 14th - Sewer changed - 6-11-51 #1783 - 11/3/92 - 1356 N Broadway - WARDL Bette -

#7155 - Tap - 1326 N. Broadway - 1-21-52 - Richard LaFay

#507 - Set wye - 1356 N. Broadway - 4-2-54 - Moore, Robertson P/bg. Co.

#10341 Seal off - 1337 N. Topeka - Hanna Kelly - 11-14-64 (pink line with 1339 N. Topeka)

Tap C23030 - 1310 N. Broadway - 2-19-71 - Al Henning (150' N. of M.H. in 12th + 40' W. + 12' S. of N. P.L.)

2105 2114192 (1450 N. Broadway) - Boardman - (4" clay tile line sealed off 7' from main and 54' south of MH)