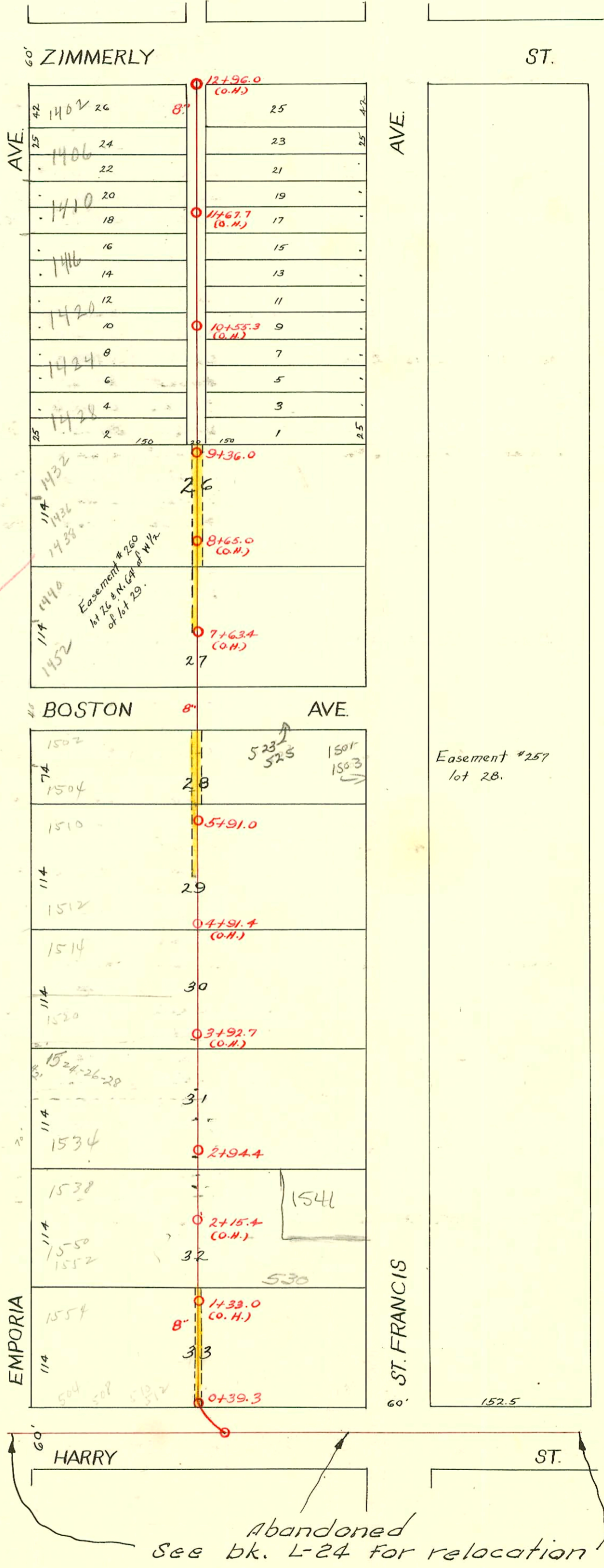


WEST SUB-MAIN "C" & Interception on HARRY ST. & LAT. N. to ZIMMERLY ST.  
S.S. No. 1-1889

Plat 959



CONSTRUCTION RECORD						SERVICE RECORD						
STATION	ELEVATION		Depth	MANHOLE	4-INCH "Y" BRANCHES		No. of Permit		House Number		DATE OF PERMITS	
	Ground	Grade			North West	South East	North West	South East	North West	South East	North West	South East
				12 + 96.0 (O.H.)	12 + 76.6	12 + 74.6						
					12 + 53.5	12 + 51.5						
					12 + 28.5	12 + 26.5	#275	#888	1400 S. Emporia		1-22-07	6-12-23
12	103.85	99.34	4.51		12 + 03.3	12 + 01.3	#650	#1556	1401 S. Emporia		10-19-09	10-22-23
					11 + 78.3	11 + 76.3	#31772	#52	1408 S. Emporia		11-16-78	4-22-07
				Tap	11 + 79.5	11 + 51.5	C46063	#585	1410 S. Emporia		8-2-74	4-23-22
					11 + 53.5	11 + 51.5						
					11 + 28.5	11 + 26.5	#534				9-26-13	
11	104.35	99.02	5.33		11 + 03.4	11 + 01.4						
					10 + 78.5	10 + 76.5		#53				1-11-23
					10 + 53.4	10 + 51.4	#268	#824			2-24-23	7-13-22
					10 + 28.7	10 + 26.7	#269				2-24-23	
10	104.18	98.70	5.48		10 + 03.7	10 + 01.7		#252	1483 S. St. Francis			11-30-09
					9 + 78.5	9 + 76.5	1002 000 25	#705	1428 R. Emporia		1-3-02	11-9-09
				9 + 36.0	9 + 53.5	9 + 51.5	#875				11-14-11	
					9 + 28.7	9 + 26.7		#525				8-21-09
9	104.53	98.38	6.15		9 + 03.7	9 + 01.7						
					8 + 78.7	8 + 76.7						
					8 + 54.0	8 + 52.0		#3693	1439 S. St. Francis			6-17-41
					8 + 28.7	8 + 26.7	#919				7-31-22	
8	104.42	98.06	6.36		8 + 03.3	8 + 01.3		#516				8-21-09
					7 + 78.5	7 + 76.5	#2245		1440 S. Emporia		10-8-54	
					7 + 53.4	7 + 51.4	#287	#527			4-7-22	8-21-09
					7 + 28.0	7 + 26.0	#58		1444 S. Emporia		2-8-10	
7	104.87	97.74	7.13		7 + 04.0	7 + 02.0						
					6 + 78.5	6 + 76.5						
					6 + 51.8	6 + 49.8	#186					
					6 + 26.8	6 + 24.8	#2201	#1609	1504 A. Emporia		4-9-17	11-30-94
6	104.68	97.42	7.26		6 + 02.0	6 + 00.0	#855				9-19-21	4-28-42
				5 + 91.0								
					5 + 76.0	5 + 74.0	#355	#2384	1507 S. St. Francis		6-14-09	11-9-49
					5 + 51.5	5 + 49.5	#189				9-14-22	
					5 + 36.3	5 + 24.3		#3456	1509 S. St. Francis			2-24-50
5	103.96	97.10	6.86		5 + 02.0	5 + 00.0	#380		1512 S. Emporia		4-6-50	
								#125	1511 S. St. Francis			3-14-10
					4 + 77.5	4 + 51.0	#59	#126	1514 S. Emporia		2-26-09	3-14-10
					4 + 49.0	4 + 26.0						
4	104.02	96.78	7.24		4 + 24.0		94-17869-7	#127	1522 S. Emporia	1515 S. St. Francis	10-28-94	3-14-10
					4 + 01.3	3 + 99.3	#146A				10-4-23	
					3 + 76.5	3 + 74.5	94-17620-7	#57	1524 S. Emporia	1513 S. St. Francis	94-17620-7	9-10-41
					3 + 57.5	3 + 74.5	#26	#120	1524 S. Emporia	1513 S. St. Francis	1-26-15	2-21-22
3	104.20	96.46	7.74		3 + 27.0	3 + 49.5						
				2 + 94.4	3 + 00.0	3 + 25.0						
					2 + 98.0	2 + 98.0		#1201				12-1-21
					2 + 73.0	2 + 71.0	#298		1536 S. Emporia		12-4-08	
					2 + 48.2	2 + 46.2	#288	#615	1538 S. Emporia	1541 S. St. Francis	5-18-10	10-18-18
2	104.14	96.14	8.00		2 + 22.0	2 + 20.0	#94				2-24-21	
					1 + 97.3	1 + 95.3						
					1 + 72.3	1 + 70.3						
					1 + 47.6	1 + 45.6	#1032	#2131	1550 S. Emporia	1549 S. St. Francis	2-10-42	9-23-69
1	104.23	95.82	8.41		1 + 22.8	1 + 20.8	#353	#283			6-12-09	3-13-40
					0 + 98.0	0 + 96.0	#2206	#64	508 E. Harry		4-10-40	2-27-23
					0 + 73.3	0 + 71.3	#819				7-12-22	
0	103.96	95.63	8.33	0 + 39.3	0 + 46.7	0 + 44.7						

1999-01339 112999 1501 S St Francis - Roto Rootr - 4" PVC, ITWIN CO

2000-02691- 1538 S Emporia - Rep- 121100 - Bammes - 4" SCH 40 - Donut 46'S of MH 2194.4 (2+48.0) 4" Trap - 1U22 v 1 Fernco to clay

24839 - 1534 S Emporia - 2-21-90 - S.O. a Henry - sealed 7' Nag MH 2194.4 and 8' from Main

Tap C65099-530 @ Harry - 2-22-78 - (not shown - (1404.2))

#3710 - Tap at 9+10.1 - 1433 S. St. Francis - 6-20-41 - Tess Hanna  
 #1206 - Tap - 570 E. Harry - 11-28-47 - Brodie Pibg  
 #1129 - Tap - 514 E. Harry - 10-5-48 - C.L. Brodie - Seal off C23691 - al Henning 4-12-71  
 #3274 - Tap - 520 E. Harry - 2-11-50 - Harley Riggs - Tap in Harry Street Sewer - Seal off al Henning 4-12-71 C23691  
 #7276 - 7277 - 6 on 8 wye - 1436 S. Emporia - 1-25-56 - Brodie - 2 trailers - Seal off al Henning 4-12-71 C23691  
 #376-3177 - 6 on 8 wye - Trailer - 1514 S. Emporia - 11-12-52 - Joe McDonald #22619 del. thub. - 1514 S. Emporia (4+77.5)  
 #990 - Set wye #991 Private line - 2 trailers - 1524 S. Emporia - 4-23-52 - Joe McDonald  
 #1626 - Private line trailer - 1534 S. Emporia - J.E. Lansdowne - 6-13-52 - #156086 - Seal off - 1534 S. Emporia - Paul Farmer 7/29/66  
 #6703 - Set 6 on 8 wye - Brodie Pibg. 1509 S. St. Francis - 10-14-53  
 #10378 - Hard old connection - 1524-26-28 S. Emporia - Building 5-18-59 wye 39.9'S (3+51.5) inst trap 41/100 Xs Ditch (Tied to wye - 4" SCH 40)  
 #91-31978-7 9/19/91 1541 S. St. Francis - Bammes - (wye 48'S of MH - Rpt. Lower 25' of line only)