

MAIN "C" from HARRY ST. to ZIMMERLY ST. and Intere.
S. S. No. 1 - 1889.

TRAP AREA

Plat 9-59

RECONSTRUCT SANITARY SEWER
1 + 20
PROJ. NO. 468-81996 (630541)
BUILT BY INSITUFORM PLAINS, INC.
BOOKED 10-14-94 FROM AS BUILTS

Easement #227 - E. line of N.
64' of lot 43

Easement #62 - E. end of lot 42
except S. 50'

Easement #34 - E. end of S. 50' of
lot 42.

Easement #104, on E. line of No. 64' of
lot 41.

RECONNECTIONS

STATION	ADDRESS	DIRECTIONS
1+74.5	1542 S. Santa Fe	West
1+40.4	1545 S. Santa Fe	East
1+15.8	624 E. Harry	East
0+57.1	624 E. Harry	East

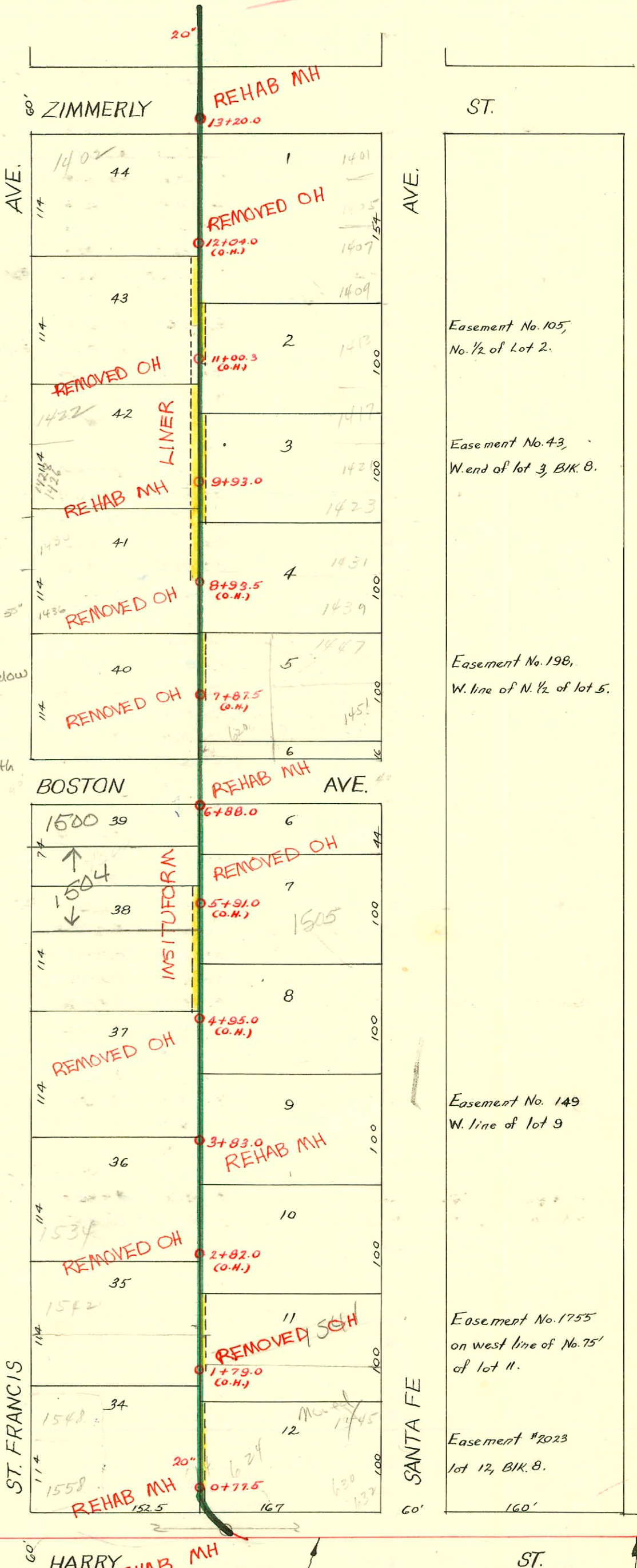
2002-02086 1545 Santa Fe - Even temp - sealed with
concrete - sewer under bldg - sealed at
bldg footing + stem well

Easement #215
N. 64' of lot 38

Easement No. 92, E. line of
So 50' of lot 38

RECONNECTIONS

STATION	ADDRESS	DIRECTION
12+88	1401 S. Santa Fe	East
12+86.1	617 E. Zimmerly	East
12+66.4	1402-1404 S. St. Francis	West
12+58.3	613-615 E. Zimmerly	West
12+39.5	1405 S. Santa Fe	East
12+17.6	1408 S. St. Francis	West
12+13.4	1407 S. Santa Fe	East
11+73.5	1414 S. St. Francis	West
11+65.7	1409 S. Santa Fe	East
11+19.5	1418 S. St. Francis	West
11+18.1	1413 S. Santa Fe	East
10+69	1417 S. Santa Fe	East
10+47	1422 S. St. Francis (A,B,C)	West
9+86	1421 S. Santa Fe	East
9+68.7	1423 S. Santa Fe	East
9+63.1	1426 S. St. Francis (1+2) 1428 S. St. Francis	West
9+41.3	1430 S. St. Francis	West
9+13.7	1431 S. Santa Fe	East
8+65.6	1436 S. St. Francis	West
8+64.6	1439 S. Santa Fe	East
8+42.9	1438 S. St. Francis	West
8+15.9	1447 S. Santa Fe	East
7+91.9	620 E. Boston	East
7+71.5	1440 S. St. Francis	West
7+45	1451 S. Santa Fe	East
6+66.4	1500 S. St. Francis 603 E. Boston	West
6+64.2	1501 S. Santa Fe	East
6+42.1	1504 S. St. Francis	West
6+17.1	1505 S. Santa Fe	East
5+69.8	1508 S. St. Francis	West
5+25.6	1512-1514 S. St. Francis	West
4+78.1	1518 S. St. Francis	West
4+43.1	1521 S. Santa Fe	East



Abandoned
See bk. L-24 for relocation
RECONNECTIONS

STATION	ADDRESS	DIRECTION
4+20.9	1520 S. St. Francis	West
3+98.1	1529 S. Santa Fe	East
3+63.7	1532 S. St. Francis	West
3+39.1	1539 S. Santa Fe	East
3+36.6	1539 S. Santa Fe	East
2+91.6	1534 S. St. Francis	West
2+25.4	1542 S. St. Francis	West
2+14.6	1541 S. Santa Fe	East

970215690721 - 12497
2001-02112
823101

