

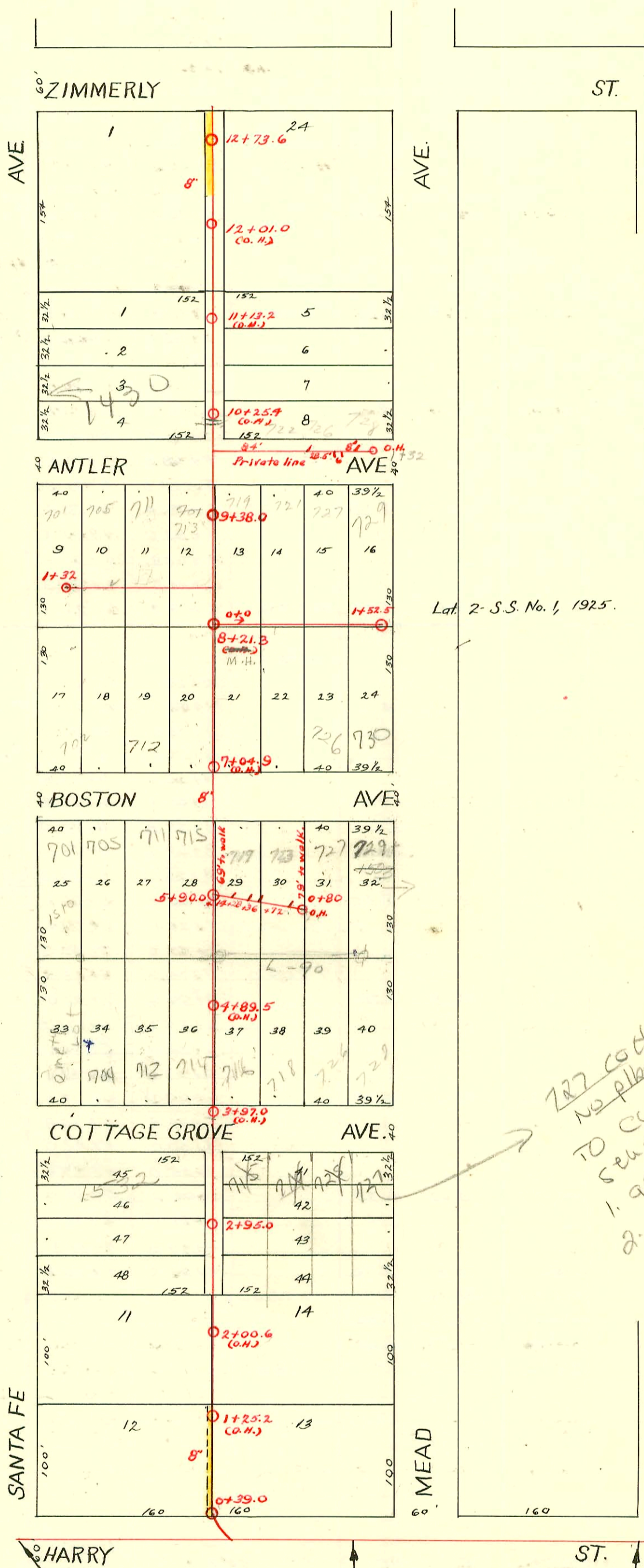
EAST LAT. "C" From HARRY ST. to ZIMMERLY ST. and INTERCEPTION
S.S. No. 1

Plat 9-59

1889

TRAP AREA

Easement No. 49 - Tract 74 x 160' deep
in lot 1. Sewer to be where alley should be.



Lot 2 - S.S. No. 1, 1925.

Trap Area

Easement #39 - Lot 12, Bk. 7,
Perrey's. To be laid in line with alley.

727 Cottage Grove
No pipe in Bldg
to connect to
sewer require
1. approved plumbing
2. copy of recorded
sewer covenant
all lots
together
see parcel
tag
bk
1-20-10

Abandoned
See bk. L-24 for relocation

SWR 2008-00443 2/19/03 1430 S Santa Fe Padgett ex - Alley cut - 4" sewer, 2" twin eo, 2" 45, 2" 22, 1" wye
SWR 2011-02010 8/14/2009 719 E Cottage Grove H.P. Mills

CONSTRUCTION RECORD

SERVICE RECORD

STATION	ELEVATION		Depth	MANHOLE	4-INCH "Y" BRANCHES		No. of Permit		House Number		DATE OF PERMITS	
	Ground	Grade			North West	South East	North West	South East	North West	South East	North West	South East
0					0+50 0+86 1+32 (O.H.)	1+30		#776 15795	705 Antler		3-14-19 6-20-62	
								Nos. 999 & 1000 in Antler - 8-15-22 #1032 - 8-17-22 #1046 - 8-19-22				
12	104.25	99.71	4.54	12+73.6	12+69.8 12+43.6 12+20.0 11+94.0 11+67.5 11+43.3	12+67.8 12+41.6 12+18.0 11+92.0 11+65.5 11+41.3		#484 #1577 #4771 #13104 #228 #663	#1165 #7105 #1273 #1424 S. Santa Fe	1406-08-10-12 719 E. S. Santa Fe Zimmerly	1-10-63 3-14-24 10-19-23 9-30-22 2-27-85 10-20-72 4-16-10 12-3-18	9-9-22
												#404 719 E. Zimmerly 4-11-57
11	104.30	99.31	4.99		11+20.0 10+93.5 10+69.4 10+45.3	11+18.0 10+91.5 10+67.4 10+43.3		#228 #663 #1511			12-27-55 10-20-72 4-16-10 12-3-18	11-9-22
10	104.40	98.91	5.49		10+19.7 9+98.0 9+70.0 9+38.0	10+17.7 9+96.0 9+68.0 9+36.1		#532			6-8-11	
9	104.69	98.51	6.18		9+19.3 8+96.0 8+69.0 8+44.0	9+17.3 8+94.0 8+67.0 8+42.0		#532 #518	713 Antler 781 Antler		11-16-12 11-12-12	
8	105.24	98.11	7.13		8+19.5 7+94.7 7+69.7 7+44.8	8+17.5 7+92.7 7+67.7 7+42.8		#211			2-13-23	8-11-70 1-18-23
7	104.76	97.71	7.05		7+19.6 6+95.2 6+70.4 6+44.2	7+17.6 6+93.2 6+68.4 6+42.2		#555 #355	1428 S. Santa Fe		10-10-10 4-19-11	
6	104.31	97.30	7.00		6+19.7 5+90.0 5+97.4 5+70.2 5+45.7	6+17.7 5+95.4 5+68.2 5+43.7		#23 #25 #36	7191 Private line 703 S. Santa Fe 727 E. Boston		1-8-23 3-9-10 1-28-13	
5	104.20	96.91	7.29		5+21.2 4+94.8 4+71.7 4+44.8	5+19.2 4+92.8 4+69.7 4+42.8		#70 #171 #485 #1599 #548 #67 #602	726 Cottage Grove 706 Cottage Grove 1532 S. Santa Fe		11-5-23 4-7-09 11-6-22 11-23-22 6-14-11 1-15-23	
4	104.28	96.51	7.77		4+20.2 3+96.6 3+70.9 3+46.6	4+18.2 3+94.6 3+68.9 3+44.6		#739 #1534 #401 #6	715 Cottage Grove 721 Cottage Grove		5-16-23 11-13-22 7-19-13 1-2-23	
3	104.65	96.11	8.54		3+19.3 2+89.0 2+70.7 2+46.5	3+17.3 2+87.0 2+68.7 2+44.5		#359 #732 #693	1531 S. Mead		6-15-09 5-15-23 11-5-09	7-20-26
2	104.92	95.71	9.21		1+96.7 1+72.5 1+47.2	1+94.7 1+70.5 1+45.2		#1337 #2922	720 E. Harry		9-10-23 4-10-46	
1	104.76	95.31	9.45		1+21.0 0+97.3 0+71.8	1+19.0 0+95.3 0+69.8						
0	104.44	95.07	9.37	0+139.0	0+49.3 0+13.5 0+39.5 0+65 0+91	0+47.3 0+16 0+42 0+67.5 0+93.5		#138 #1661	722 E. Boston		2-17-28 11-13-23	
Line W. from Mead N. of Boston	0+0	105.54	99.24	6.30	0+0	0+13.5 0+39.5 0+65 0+91	0+16 0+42 0+67.5 0+93.5					
	1+0	105.59	99.44	6.15	1+17	1+19.5		#1242	730 E. Boston		10-12-95 3-23-42	
	1+52.5	105.10	99.54	5.56	1+52.5	1+42.5 1+45						

Scarf 056123 - 702 Cottage Grove - 6-25-76
 #1063 - Used old connection - 600 S. Broadway - 6-11-56 - Thompson Pibg. Co.
 #1316 - Private line - 723 Antler - 10-26-29 - O.W. Shinnett
 #1624 - Private line - 702 E. Boston - 11-13-29 - Home Builders Pibg. Co.
 #3140 - Tap - 1510 S. Santa Fe - 1-24-50 - A. Kime - Al Henning - Repl 15" High
 #1253 - 9-26-22 - (Erd. ITWIN CO) 1145, 4" scd 40 P
 #100 - 1-20-23 - Connected to Private line - 725 Cottage Grove
 #6449 - Tap - 716 Cottage Grove - 9-16-53 - G.A. Smith
 #3518 - Tap - 728 E. Harry - 12-15-52 - Brodie Pibg.
 8739 - Det bombing - Antler - Smith Pibg 11-20-58 0+824
 13008 Tap 726 Antler - Summary Pub. OH. Mead - 13 1/2 W. 6-20-60
 B1392 Tap 727 Boston - Smith Pibg 6-11-64 (1+09.5)
 #10996 Sealoff - 727 Boston - Al Henning - 8-19-68 (6+72)
 #74461 - 727 Cottage Grove - 9-21-79 (3+70.0) maybe private
 92-1118-7 9/24/98 - 704 Cottage Grove - (sealed off at sidewalk at WPL)