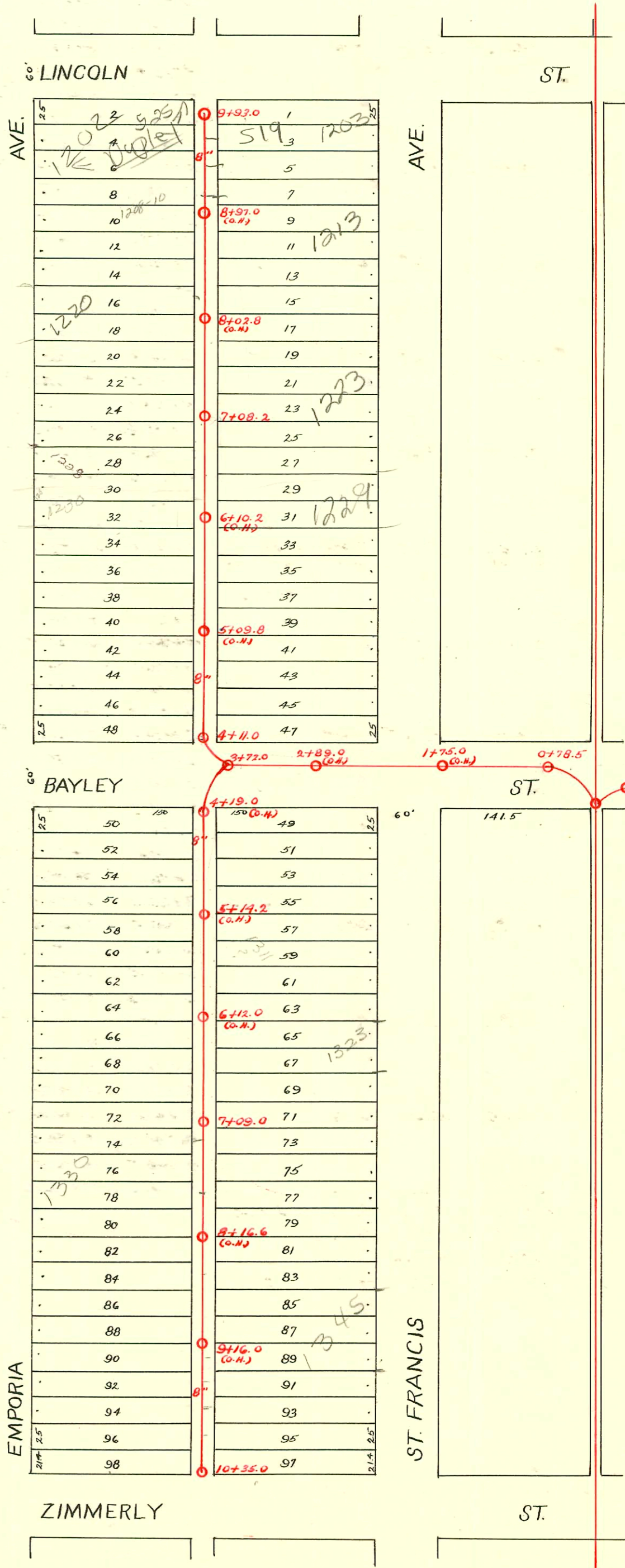


WEST SUB-MAIN "C" on BAYLEY ST. and LAT'S NORTH and SOUTH
S.S. No. 1 - 1889

TRAP AREA

Plat 9-59



CONSTRUCTION RECORD						SERVICE RECORD						
STATION	ELEVATION		Depth	MANHOLE	4-INCH "Y" BRANCHES		No. of Permit		House Number		DATE OF PERMITS	
	Ground	Grade			North West	South East	North West	South East	North West	South East	North West	South East
				9+93.0								
9	105.68	100.37	5.31		9+86.6	9+88.6	#871		1200 S. Emporia	1201 S. Emporia	5-22-56	
					9+67.7	9+69.7		#1037	1200 S. Emporia	St. Francis	12-1-81	9-24-28
					9+41.3	9+43.3		#869	1205 S. Lincoln	St. Francis	8-3-91	10-13-27
					9+16.3	9+18.3		#258	1210-14 S. Emporia	St. Francis	1-4-08	12-6-28
					8+93.0	8+95.0		#438	1213 S. Emporia	St. Francis	5-23-21	7-15-01
					8+68.0	8+70.0		#670				8-1-21
8	106.00	99.97	6.03		8+42.6	8+44.6	#273	#88	1220 S. Emporia	1221 S. Emporia	1-28-08	2-9-22
					8+18.2	8+20.2		#678				12-7-22
					7+93.0	7+95.0		#417				4-28-22
					7+68.8	7+70.8		#56	1222 S. Emporia	1231 S. Emporia	2-17-09	2-7-10
7	105.72	99.57	6.15	7+08.2	7+18.8	7+20.8	#19		1224 S. Emporia		2-27-06	
					6+93.7	6+95.7		#417	1228 S. Emporia	1227 S. Emporia	8-22-86	4-28-27
					6+68.8	6+70.8		#788	1230 S. Emporia	1227 S. Emporia	11-13-05	7-5-22
6	106.43	99.17	7.26		6+44.2	6+46.2	#1313		1241 S. Emporia		10-9-22	
					5+93.5	5+95.5		#1260		1243 S. St. Francis		1-14-47
					5+68.5	5+70.5		#809	1242 S. Emporia	1247 S. St. Francis	9-29-47	8-28-48
5	106.05	98.77	7.28		5+43.8	5+45.8		#782				
					5+18.4	5+20.4		6422				
					4+93.6	4+95.6						
					4+68.8	4+70.8						
4	105.89	98.42	7.47	4+11.0	4+19.3	4+21.3	#174				4-7-13	
				10+35.0								
10	104.34	100.27	4.07		10+25.5	10+27.5	#295	#1694	1362 S. Emporia	1359 S. St. Francis	5-20-10	3-28-47
					10+00.5	10+02.5		#230				4-29-09
					9+75.0	9+77.0		#203	1340 Emporia		10-17-05	
					9+50.0	9+52.0		#1835	1350 S. Emporia		12-29-48	
9	104.42	99.95	4.47		9+25.3	9+27.3		#82	1354 S. Emporia		2-24-10	
					9+00.4	9+02.4		#204				2-12-23
					8+75.3	8+77.3		#334	1338 S. Emporia		6-8-78	4-17-22
					8+50.2	8+52.2		#66	1338 S. Emporia		4-3-13	4-13-08
8	105.05	99.63	5.42		8+25.3	8+27.3		#120	1338 S. Emporia		6-29-07	4-13-08
					8+00.4	8+02.4		#14	1338 S. Emporia		3-6-05	
					7+75.4	7+77.4		#171				4-19-15
7	104.59	99.31	5.28	7+09.0	7+25.3	7+27.3		#1254				9-26-22
					7+00.0	7+02.0		11088	1311 R. St. Francis			6-4-84
					6+75.2	6+77.2		#65	1316/1320 S. Emporia		5-1-07	
					6+50.0	6+52.0		#132	1314 S. Emporia		7-18-94	
6	104.72	98.99	5.73		6+25.0	6+27.0		#475	1317 S. Emporia	1317 S. St. Francis	11-22-02	10-13-41
					6+00.0	6+02.0		#330				
					5+74.8	5+76.8		#343	1315 S. Emporia		6-9-09	
					5+50.0	5+52.0		#630				9-15-23
5	105.04	98.67	6.37		5+25.0	5+27.0		#211	1302 S. Emporia		9-28-06	
					5+00.0	5+02.0		#334	1303 S. St. Francis			4-6-25
4	105.77	98.41	7.36		4+74.7	4+76.7						
3	105.97	98.26	7.71	3+72.0	4+49.5	4+51.5						
2	104.67	97.71	6.96		4+24.6	4+26.6						
1	104.68	97.39	7.29									
0	104.72	97.32	7.40	0+78.5								

S/O SWR2002-02575 - 519 E Lincoln - 4" w/c concrete 30' of MH 5' from main - 9/18/02 A SAP P/bg
 S/O 2001-02527-1213 St. Francis - 5/0 19' N of SPL + 30' from RPL HD Hills - 10/11/01
 2001-01332-513101-Brand P/bg - 4" sch 40 6" clay x 4" clay Ferno clam 110' N of MH 7+08.2 (8+18.3) Trap installed, 17" W in co, 2H22, 1H45
 R # 3771 1246 S Emporia (Bracket) 7-23-01 MH-4+11.0 (wye 10' S of N. Prop line)
 N.C. # 402142 1314 S Emporia (M.H. 7+09.0) 12-17-80 - 7" mayberry (5+85.0)
 Jap # 63511 - 1216 S. Emporia - 10-12-77 (8+40.9)
 #456-Top - 506 E. Zimmerly - 10-20-41 - Frederick P/bg Co.
 #2465-Top - 1208 A. S. Emporia - 11-8-54 - Roy Yackley
 #872- Trailer - 1200 S. Emporia - 5-22-56 - J.C. Seters - (6on 8 wye)
 #24782-2-8-90 - 1345 S. ST. FRANCIS - 7' d new garage into existing house sewer 30' from house
 93-20645-7 8/4/43 1330 S. Emporia - 395' S of MH edge of alley 5/0 6" clay