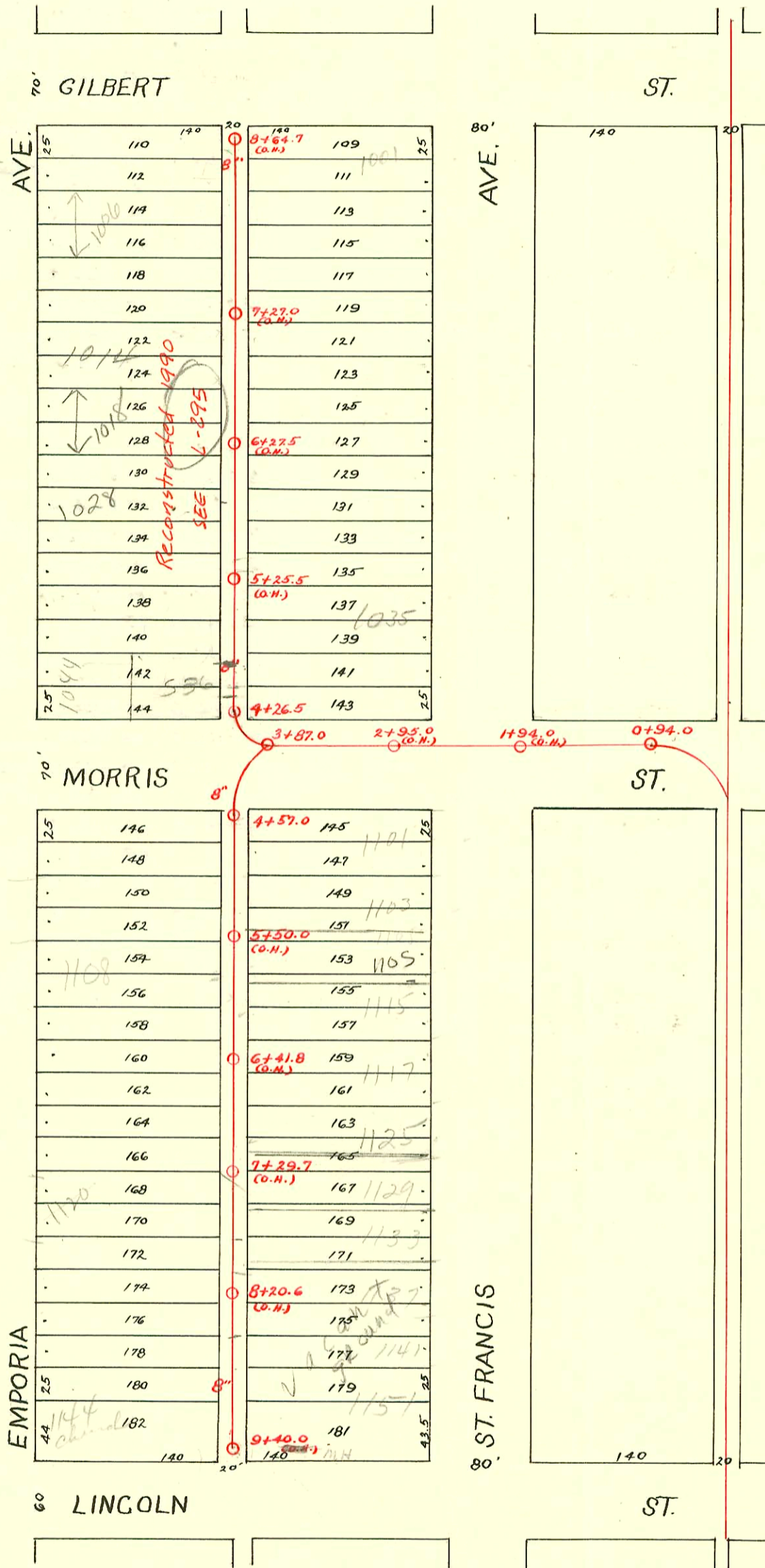


Plat 9-56

TRAP AREA



CONSTRUCTION RECORD							SERVICE RECORD					
STATION	ELEVATION		Depth	MANHOLE	4-INCH "Y" BRANCHES		No. of Permit		House Number		DATE OF PERMITS	
	Ground	Grade			North West	South East	North West	South East	North West	South East	North West	South East
8	107.72	102.60	5.12	8+64.7 (O.H.)	8+61.3	8+59.3	#7907		1002 S. Emporia	1001 S. Emporia	2-2-56	
	107.25	102.17	5.08		8+36.0	8+34.0	#259	#972	Emporia		12-17-06	7-2-23
					8+10.6	8+08.6	#236		Emporia		5-10-04	
					7+85.6	7+83.6		#787			5-25-23	
					7+60.4	7+58.4	#256	#127	1032 S. Emporia		6-7-04	5-15-24
7	107.19	101.57	5.62		7+35.4	7+33.4	#1690				12-8-22	
					7+08.2	7+06.2	#798	#1742	1014 S. Emporia	1017 S. St. Francis	7-7-22	12-14-29
					6+84.7	6+82.7	1999-00199				7-2-99	
					6+60.6	6+58.6	#795		1018 S. Emporia	R. Bee Below	7-27-03	
					6+36.0	6+34.0	#1072	#4150	1026 S. Emporia	1023 S. St. Francis	8-24-22	2-19-53
6	106.78	100.97	5.81		5+84.0	5+82.0	#459		Emporia		9-13-15	
					5+59.2	5+57.2	#474				7-9-17	
					5+34.4	5+32.4		#248				4-28-10
					5+09.4	5+07.4						
					4+84.7	4+82.7	#42		1042 S. Emporia		4-10-05	
5	106.57	100.37	6.17		4+61.9	4+59.9	#979	?			10-17-21	8-1-00
					4+38.9	4+36.9	#797				9-1-21	
9	106.14	101.54	4.60	9+40.0 (O.H.)	9+34.0	9+32.0	#3023		514 E. Lincoln		10-28-52	
					9+09.0	9+07.0	#321	#54	Emporia		7-2-12	2-11-11
					8+83.5	8+81.5	#54				2-11-11	
					8+58.5	8+56.5	#467	#340	1128 S. Emporia	1141 S. St. Francis	8-5-10	6-10-10
					8+33.2	8+31.2	#336	#336	1144 S. Emporia	1145 S. St. Francis	5-10-65	6-8-10
8	106.62	101.18	5.44		7+83.4	7+81.4	#86	#339	Emporia	St. Francis	5-1-08	6-10-10
					7+58.5	7+56.5	#250		Emporia		4-28-10	
					7+33.5	7+31.5	#251	#335			11-2-08	6-8-10
					7+08.3	7+06.3	#334					6-8-10
					6+83.7	6+81.7	94-17397-7		1118 S. Emporia		10-26-94	
7	106.27	100.82	5.75		6+59.0	6+57.0	#287	#336	Emporia	1145 S. St. Francis	5-8-10	6-8-10
					6+34.0	6+32.0		#680				12-12-10
					6+09.0	6+07.0	#376		Emporia		3-31-71	
					5+83.5	5+81.5	#24431		Emporia		6-23-10	
					5+56.8	5+54.8	11566	#702	1108 S. Emporia	1107 S. St. Francis	9-23-59	8-20-27
6	106.67	100.46	6.21		5+33.5	5+31.5	#353				10-10-04	
					5+08.5	5+06.5		#688				8-15-27
					4+83.6	4+81.6	?	#1156			8-2-23	9-20-00
					4+64.8	4+62.8	11754		Emporia		10-27-59	
					4+37.0	4+35.0						
5	106.46	100.10	6.36		4+17.0	4+15.0						
					3+92.0	3+90.0						
					3+67.0	3+65.0						
					3+42.0	3+40.0						
					3+17.0	3+15.0						
4	106.57	99.95	6.59	4+57.0	3+92.0	3+90.0						
					3+67.0	3+65.0						
					3+42.0	3+40.0						
					3+17.0	3+15.0						
					2+92.0	2+90.0						
3	106.05	99.69	6.36	3+87.0	2+62.0	2+60.0						
					2+37.0	2+35.0						
					2+12.0	2+10.0						
					1+87.0	1+85.0						
					1+62.0	1+60.0						
2	106.21	99.02	7.19		1+37.0	1+35.0						
					1+12.0	1+10.0						
					0+87.0	0+85.0						
					0+62.0	0+60.0						
					0+37.0	0+35.0						
1	105.91	98.66	7.25		0+12.0	0+10.0						
					0+87.0	0+85.0						
					0+62.0	0+60.0						
					0+37.0	0+35.0						
					0+12.0	0+10.0						
0	105.82	98.64	7.18	0+94.0	0+69.0	0+67.0						
					0+44.0	0+42.0						
					0+19.0	0+17.0						
					0+94.0	0+92.0						
					0+69.0	0+67.0						

1999-00109-7/2/99-1018 S Emporia St - Olson Swr - 4" Sch 40, 1(3") V 22, 1(4") H 45 1-4x3 Red

80 C 59064 - Don Coleman - 1137 S St Francis - 12-13-76 (8+05)

Private line - Trailer - 516 E. Lincoln - 10-28-52 - E. B. Binnon

C 34942 - 1125-27 N. St Francis - 9-19-72 Al Henning (7+67+10' E. of main)

20044 - 1144 S EMPORIA (addition) New Conn (7+82 wye)

94-2316-7 - 1006 S Emporia - 5/0 6" Clay tile line sealed off 4 ft South of NPL and 6 ft West of RPL - No alley cut. 2-24-94

94-2317-7 - 1006 S Emporia - N/C - Tap 7 1/2 ft South of MH (7+90.1) 4" Sch 40 PVC