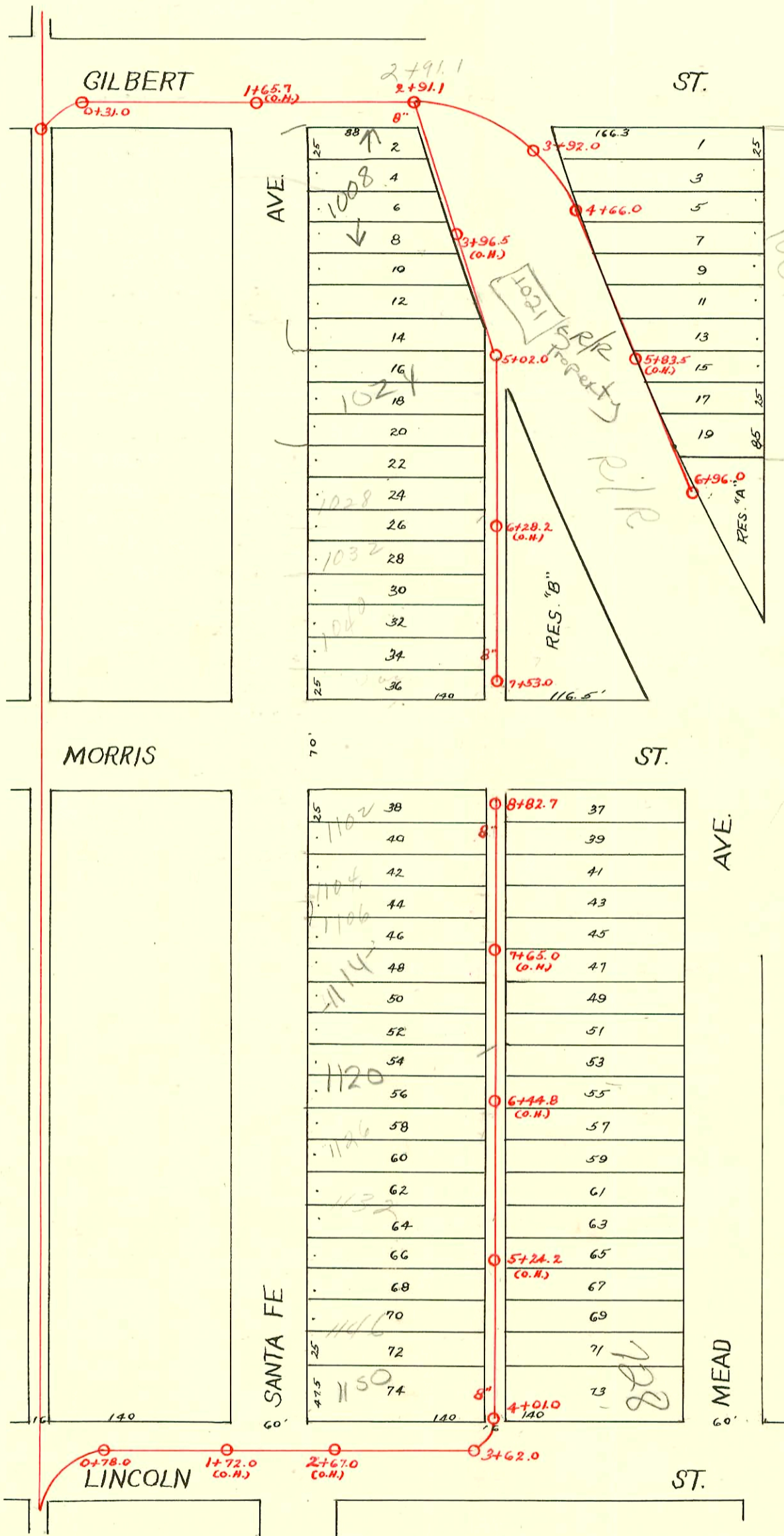


EAST SUB-MAIN "C" on LINCOLN ST. and LAT. N.
 EAST SUB-MAIN "C" on GILBERT ST. and 2 LAT. S.
 S.S. No. 1 - 1889

Plat 9-50

TRAP AREA



2002-00292- 2/1/02-1008 S Santa Fe- AE Henning - 4" sch 40 Donut 93.9' sof mit 2+91.1 (3+85) ITWIN co, trap,
 2 Fernes
 2002-00581 3/4/02 1008 S Santa Fe- AE Henning - 4" sch 40 Predco Saddle, 1045, no msmt

SWR 2001-03044 11/29/01 1150 S. Santa Fe - Mies Const :
 Ref

CONSTRUCTION RECORD						SERVICE RECORD						
STATION	ELEVATION		Depth	MANHOLE	4-INCH "Y" BRANCHES		No. of Permit		House Number		DATE OF PERMITS	
	Ground	Grade			North West	South East	North West	South East	North West	South East	North West	South East
				6+96.0								
						6+94.2						
						6+73.8						
						6+49.0						
6	107.28	101.23	6.05			6+22.0						
						5+98.5						
						5+71.7						
						5+49.0		16805	1021 mead		8-6-86	
5	107.00	100.75	6.35			5+22.2						
	107.13	100.59	6.54	4+66.0		4+96.8						
						4+72.6						
						4+50.7						
						4+23.0						
4	107.68	100.35	7.33			4+00.4						
3	106.80	100.23	6.57	3+92.0								
				7+53.0								
7	107.35	101.71	5.64	7+48.8 7+17.4 7+18.4	7+46.8 7+20.4			#4683 #2342	1038 S. Santa Fe 1040 S. Santa Fe		5-16-51 11-18-69 (Ray Bryant)	
						6+94.0	6+96.0					
						6+67.4	6+69.4					
						6+44.7	6+46.7					
6	107.44	101.23	6.21			6+17.9	6+19.9	#3760	1044 S. Santa Fe		1-23-50	
						5+94.4	5+96.4					
						5+68.5		64924	1028 S. Santa Fe		1-12-78	
5	107.40	100.76	6.64	5+02.0		5+20.0		#1838	1026 S. Santa Fe		3-23-48	
						4+93.0		#11069	1016 S. Santa Fe		5-31-84 1-16-20	
						4+46.2		26				
						4+31.7						
4	107.40	100.27	7.13			4+08.1		#1222	701 E. Gilbert		3-19-42	
						3+81.0						
						3+56.7						
3	106.83	99.79	7.04			3+31.9						
	106.95	99.75	7.20	2+91.1								
						2+56.9 N.						
2	106.89	99.46	7.43			2+32.0						
						2+07.4						
						1+80.4						
						1+31.4						
1	106.48	99.14	7.34			1+04.7						
						0+77.7						
0	106.22	98.94	7.28	0+31.0		0+52.9						
				8+82.1								
						8+77.0	8+79.0					
						8+54.5	8+56.5	#1331	1102 S. Santa Fe		9-8-23	
						8+32.5	8+34.5					
8	106.89	101.65	5.24			8+06.0	8+08.0	#1843	1106 S. Santa Fe		8-26-64	
						7+81.4	7+83.4					
						7+57.2	7+59.2					
						7+32.8	7+34.8					
7	106.61	101.05	5.56			7+06.0	7+08.0	#1476	1120 S. Santa Fe		7-1-68 1-16-48	
						6+81.6	6+83.6	#1612	1126 S. Santa Fe		7-14-24	
						6+57.4	6+59.4	#2148			4-19-67	
						6+30.6	6+32.6					
6	106.08	100.45	5.63			6+07.8	6+09.8					
						5+81.3	5+83.3					
						5+57.0	5+59.0					
						5+32.7	5+34.7					
5	105.67	99.85	5.82			5+06.2	5+08.2	#2096	1146 S. Santa Fe		2-23-40	
						4+82.1	4+84.1	#1564			10-23-23	
						4+57.7	4+59.7					
						4+32.6	4+34.6	#855	728 E. Lincoln		7-23-80	
4	106.79	99.27	7.52	4+01.0		4+07.0	4+09.0	#2545	704 E. 1150 Santa Fe		11-22-49	
3	105.82	98.81	7.01	3+62.0								
2	105.91	98.45	7.46									
1	105.50	98.09	7.41									
0	105.63	98.01	7.62	0+78.0								

Send off C-22361-1104 S. Santa Fe - at Kenning - 12-28-70 (8+20.7)
 C-2748 - 1126 S. Santa Fe - Hancock Alley 4-19-67 top 5+48

#3065 - Santa Fe R.R. - 1-22-41 - R.E. Boyer
 #1117 - Tap - 710 E. Morris - 10-5-43 - Harley Riggs
 #857 - Used old connection - 1114 S. Santa Fe - 10-3-47 - Ray Bryant
 #1027 - Used old connection - 1114 S. Santa Fe - 10-28-47 - Ray Bryant
 94-3367 - 1114 S. Santa Fe - 1-7-94 - 4" PVC 40 - Replaced all but lower 5 ft of line - 4" trap installed - 1/4" p.f. - No alley cut
 #13219 - 1132 S. Santa Fe - Davidson Assoc. 8-2-60 (5+03)