

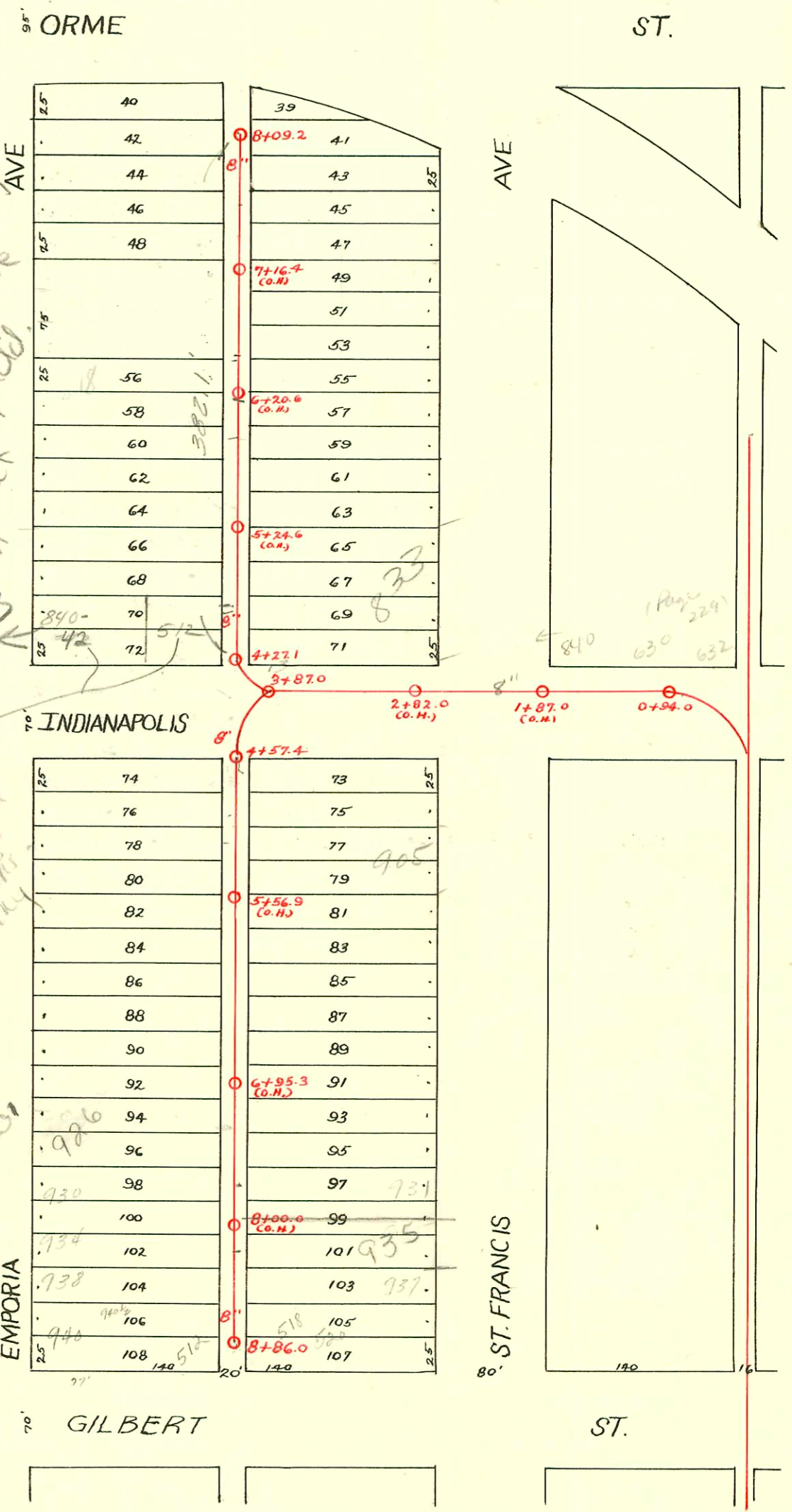
WEST SUB-MAIN "C" on INDIANAPOLIS and LAT<sup>s</sup> N. and S.  
S. S. No. 1 - 1889.

TRAP AREA

flat 9-56

818 S. Emporia  
 City Rep. in 8" Clay Main  
 would find in 4/03. Center  
 from this find any line coming  
 eye test but center did  
 City sewer. No main came  
 No record made for this area  
 try to find out  
 permit to dig  
 sewer gain  
 correct  
 4/18/63

Note:  
 Service Line for  
 846-42 S. Emporia  
 crosses lot for  
 S12 Indianapolis  
 No record of any  
 easement  
 9/18/63  
 BKR  
 6-22-01



40 SWE2005-03072 - 814 S Emporia. Olson SWL, 12-13-05, Install (1) 22 H 4" sch 40 PVC

CONSTRUCTION RECORD							SERVICE RECORD					
STATION	ELEVATION		Depth	MANHOLE	4-INCH "Y" BRANCHES		No. of Permit		House Number		DATE OF PERMITS	
	Ground	Grade			North West	South East	North West	South East	North West	South East	North West	South East
				8+86.0								
8	107.46	102.54	4.92	8+86.0	8+80.0	8+78.0	#200	#1168	512 E. Gilbert	518 E. Gilbert	6-18-75	
					8+54.8	8+52.8	#307	#1304	970 S. Emporia	911 S. Emporia	3-23-21	10-23-24
					8+24.0	8+22.0	#111	#1657	730 S. Emporia	738 S. Emporia	4-19-21	4-14-23
					7+98.7	7+96.7	#540	#613	93 S. St. Francis		6-21-07	9-4-23
					7+73.4	7+71.4	#656				9-30-10	12-4-12
7	107.83	102.14	5.69	7+23.6	7+21.6		#383	#2129	931 S. St. Francis		8-19-12	8-30-50
					7+00.0		#156		922 S. Emporia		8-19-05	
						6+98.0						
						6+73.4	6+71.4					
						6+50.6	6+48.6					
6	106.80	101.74	5.06	6+23.6	6+21.6		#235		918 S. Emporia		12-4-05	
					5+98.9	5+96.9		#222				3-29-11
					5+75.9	5+73.9						
					5+48.4	5+46.4	#9	#711	907 S. St. Francis		1-29-05	6-29-25
					5+24.0	5+22.0		8450	910 S. St. Francis			10-29-58
5	106.92	101.34	5.58	5+01.0								
						4+99.0		#230				10-14-08
4	107.12	101.17	5.95	4+57.4	4+73.8	4+71.8	#6625		503 E. Indianapolis		10-5-53	
8	107.20	102.54	4.66	8+09.2	7+86.0	7+88.0	#622				7-19-21	
					7+61.0	7+63.0						2-27-02
					7+38.0	7+40.0						
7	107.21	102.14	5.07	7+10.8	7+12.8							
					6+85.4	6+87.4						
					6+61.4	6+63.4						
6	107.19	101.74	5.45	6+11.2	6+13.2							
					5+85.9	5+87.9	#4323		833 S. St. Francis		4-9-51	
					5+62.8	5+64.8		#220				3-27-20
5	107.09	101.34	5.75	5+12.6	5+14.6							
					4+87.5	4+89.5	#164	#1540	832 S. Emporia		3-6-30	
					4+62.6	4+64.6	#133	#367	516 E. Indianapolis		7-18-07	
4	107.11	101.05	6.06	4+27.1	4+35.5	4+37.5					1-25-06	
3	106.76	100.89	5.87	3+87.0								
2	107.18	100.14	7.04									
1	106.86	99.74	7.12	1+27.0								
0.	106.96	99.72	7.24	0+94.0								

2001-01540 - 6/22/01 - 512 E Indianapolis - HD Mills - 5/10 OK - Repaired private main with 2 Fernox 2' of 6" SCH 40 PVE

56 #4068 *Grub. Emporia* 7-4-81 Henry 2.4 4+52.4 (160' S of MN) (6+17.4)  
 #43610 - 240-42 S Emporia - 2-25-74 (4+65.7)  
 #37-902 S. Emporia - 2-18-37 - Carl E. Carr (Used old connection)  
 #1083-929 S. Emporia - 9-14-38 - Kansas Pbg. Co. - Private line.  
 #1530-630 E. Indianapolis - 5-10-44 - H.J. Geili - Tap - Seal Off C1031-630 E. Indianapolis - 11-30-66 - AC Henry  
 #1993-936 1/2 S. Emporia - 2-23-49 - Riggs Pbg. Co. - Tap.  
 8387 600 8 wye 911 S. St. Francis for me closed 10-21-58 8+44 (Sealed off - #15950 - 7-25-62)  
 S.O. C39255 - 937 S. St. Francis - 5/29/73 - Herb Hoover (8+40.4)