

WEST SUB-MAIN "C" on KELLOGG ST. and LAT'S N. & S.  
S.S. No. 1-1889

Plot 9-53

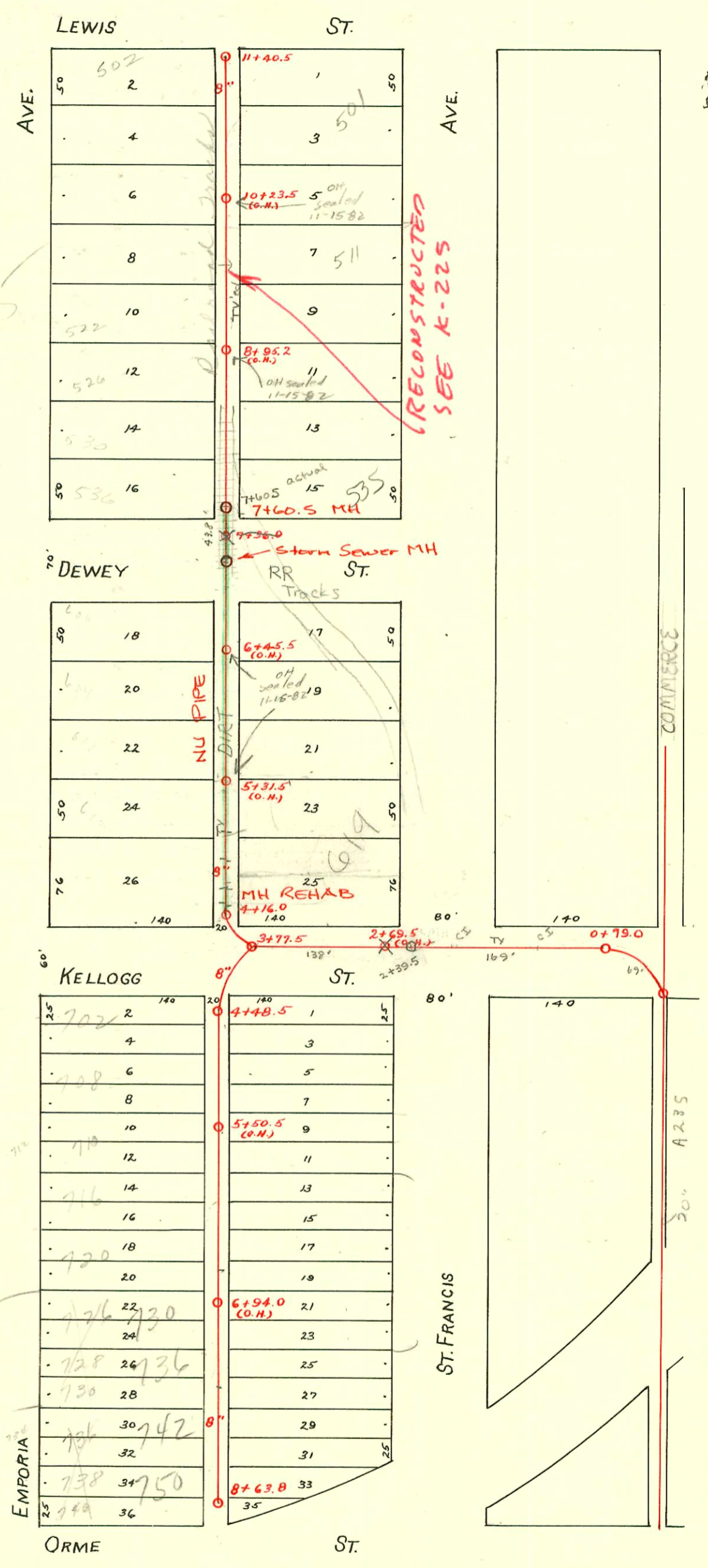
TRAP AREA

500 BLOCK S. ST. FRANCIS & TOPEKA  
HAS RAILROAD TRACKS DOWN THE  
MIDDLE OF ALLEY. WILTON SAYS  
DRAINLAYER MUST CONTACT RAILROAD  
TO SEE WHAT IS REQUIRED WHEN WORKING  
WITH SEWER LINE. THEY MIGHT REQUIRE  
SOMEONE FROM THE RAILROAD TO REMOVE  
TIES AND WORK OF THAT SORT - THIS  
WILL BE DONE AT DRAINLAYERS EXPENSE.

7-19-74.

1989 SAN. SEWER RECON, PHS III  
468-82011 (225002)  
Built By INSTITUTE PLAINS  
Booked 11-19-80 from Plan.

SCALE 1"=100'



CONSTRUCTION RECORD

SERVICE RECORD

STATION	ELEVATION		Depth	MANHOLE	4-INCH "Y" BRANCHES		No. of Permit		House Number		DATE OF PERMITS	
	Ground	Grade			North West	South East	North West	South East	North West	South East	North West	South East
	107.68	103.13	4.55	8+63.8								
					8+60.2	8+62.2	#16367				10-20-69	
					8+37.2	8+39.2	#1359				11-8-19	
8	107.87	102.86	5.01	8+12.7	8+14.7	#558	#16367				8-2-17	10-20-69
					7+88.3	7+90.3	#11946				12-12-68	
					7+63.4	7+65.4	#491				7-16-17	
					7+39.4	7+41.4	#694	#1602	730 S. Emporia		9-21-66	10-31-23
7	107.30	102.46	4.84	7+12.4	7+14.4	#5724	#296	730 S. Emporia		8-31-57	3-28-02	
					6+88.0	6+90.0	#17053		736 S. Emporia		11-24-69	
					6+63.6	6+65.6	#16368		736 S. Emporia		10-20-67	
					6+41.2	6+43.2		#165			4-23-04	4-6-09
6	104.69	102.06	2.63	6+16.5	6+18.5	#33470					7-10-72	
					5+90.0	5+92.0	#384		720 S. Emporia		7-2-02	
					5+65.4	5+67.4	#693		718 S. R. Emporia		9-21-46	
					5+41.0	5+43.0					2-23-76	
5	104.10	101.66	2.44	5+14.5	5+16.5	#1308					1-7-64	
					4+90.2	4+92.2	#650		708 S. Emporia		7-26-63	
					4+65.8	4+67.8	#17446		708 S. Emporia		7-3-53	2-23-12
4	104.45	101.46	2.99	4+48.5	4+46.5	#5700	#33	702 S. Emporia		7-3-53	2-23-12	
					4+41.5	4+43.5	#132		702 S. Emporia		6-16-08	
	104.85	103.45	1.40	11+40.5								
					11+36.7	11+34.7	#42007				11-1-73	
11	105.00	103.30	1.70	11+09.8	11+07.8	#107		502 S. Emporia			3-22-09	
					10+85.5	10+83.5	#2571		501 S. St. Francis		10-4-50	
					10+60.5	10+58.5	#29	#758	508 S. Emporia		6-21-67	9-2-25
					10+36.0	10+34.0	#245	#79	520 S. Emporia		3-7-06	9-2-25
10	105.39	103.02	2.37	10+11.5	10+09.5			501 S. St. Francis		12-16-07	4-30-06	
					9+87.2	9+85.2		#244	517 S. St. Francis		6-11-46	
					9+60.5	9+58.5						
					9+36.3	9+34.3						
9	106.17	102.74	3.43	9+11.0	9+09.0		#815	517+519 S. St. Francis			1-25-10	
					8+87.0	8+85.0	#88	#105	530 S. Emporia		5-22-07	6-20-05
					8+62.5	8+60.5	#966				6-2-19	
					8+38.0	8+36.0						
8	107.07	102.46	4.61	8+11.8	8+09.8							
					7+87.4	7+85.4	#115				9-1-98	
7	105.30	102.18	3.12	7+36.0	7+62.8	7+60.8		#310				12-18-08
					6+60.0	6+58.0						
					6+35.5	6+33.5		#98			6-21-99	4-18-13
6	105.27	101.90	3.37	6+11.0	6+09.0							
					5+86.5	5+84.5	#365				11-16-04	
					5+62.0	5+60.0	#104				6-15-07	
					5+35.5	5+33.5						
5	104.72	101.62	3.10	5+11.5	5+09.5							
					4+87.0	4+85.0		#167	520 S. Killam		7-25-08	
					4+62.0	4+60.0		#1874	621 S. St. Francis		10-4-39	
					4+36.0	4+34.0						
4	104.73	101.39	3.34	4+16.0	4+21.5	4+19.5	#336		621 S. St. Francis		5-26-17	
3	103.87	101.28	2.59	3+77.5								
2	104.97	100.86	4.11									
0	106.31	100.57	5.74	0+79.0								

2000-02703-619 S St Francis-1212100-McClung's -line previously abandoned

3-3-77-702 S. Emporia-Al Henning (4+96.5)  
 3-3-77-708 S. Emporia (used by Natick to permit at 5+21.5) Al Henning  
 #744-Top - 6-27-22  
 Use 8+09.8 Permit #C 17054 - 742-50 S. Emporia - Schuster Pkg. 11-24-69  
 50. #60047 Al Henning 700 S. Emporia 1-23-77  
 #C 61002 - 716 S. Emporia - 3-16-77 - Al Henning (seal off) (6+16.5)