

MAIN "C" from ORME ST. to LEWIS ST.

S.S. No. 1-1889

Plot 9-53

TRAP AREA

N

SCALE: 1" = 100'

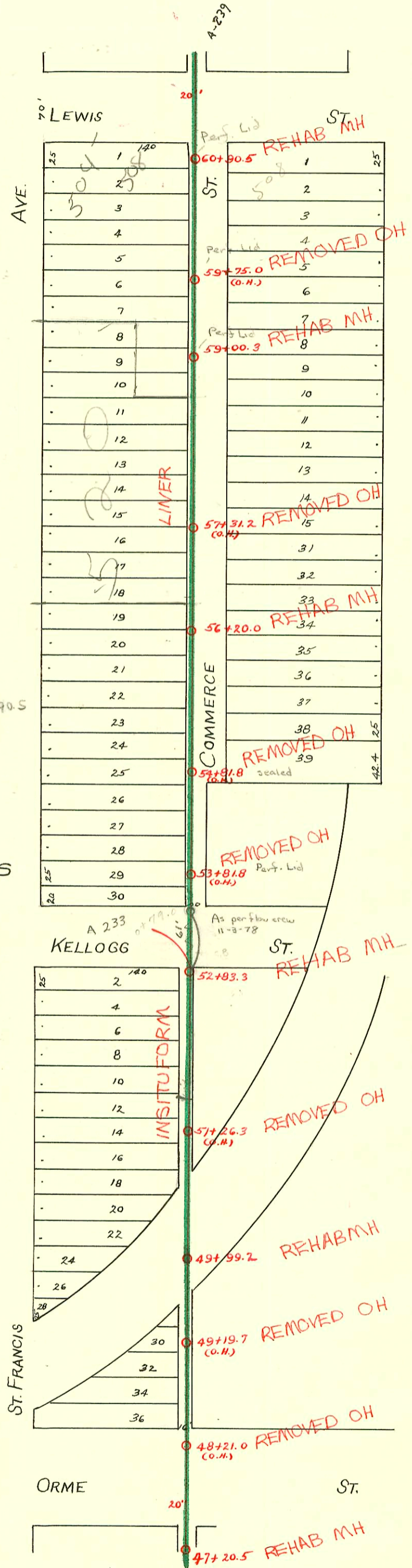
RECONNECTIONS

STATION	ADDRESS	DIRECTION
58+81	520 S. Commerce	East
58+35.6	520 S. Commerce	East
57+08.5	536 & 550 S. Commerce	East
56+59.8	520 S. St. Francis	West
56+02.8	600 & 606 S. Commerce	East
55+28.3	612 S. Commerce	East
53+80.4	622 S. Commerce	East
51+59.1	702 S. St. Francis	West
48+78.6	800 S. St. Francis	West

60+28.508 S. Commerce (Connected 52' S. MH 60190.5)
 Above connection missed originally when line INSITUFORMed. It has since been Re-opened. 8-98

RECONSTRUCT SANITARY SEWER
 NO. 1 & 20
 PROJ. NO. 468-81996 (630541)
 BUILT BY INSITUFORM PLAINS, INC.
 BOOKED 5-16-94 FROM AS BUILTS

N/C SWR 2005-03239-414 S Commerce - 159' S y MH,
 (1) hand trap, (1) HSV - Rons Plumbing, 1-18-06



CONSTRUCTION RECORD							SERVICE RECORD					
STATION	ELEVATION		Depth	MANHOLE	4-INCH "Y" BRANCHES		No. of Permit		House Number		DATE OF PERMITS	
	Ground	Grade			North West	South East	North West	South East	North West	South East	North West	South East
				60+90.5								
					60+79.0	60+77.0		#760				9-11-11
					60+54.6	60+52.6	#1138	#813			7-31-23	10-5-11
					60+29.0	60+27.0						
60	109.23	100.60	7.63		60+04.0	60+02.0						
					59+78.7	59+76.7						
					59+54.0	59+52.0						
					59+28.7	59+26.7						
59	108.01	100.50	7.51	59+00.3	59+10.0	59+08.0						
					58+80.0	58+78.0		#296	520 S. Commerce			4-25-27
					58+54.8	58+52.8						
					58+29.6	58+27.6						
58	108.07	100.40	7.67		58+04.4	58+02.4						
					57+79.4	57+77.4		#950				5-27-19
					57+54.3	57+52.3						
					57+29.3	57+27.3						
57	107.84	100.30	7.54		57+03.8	57+01.8		#1123	528 Commerce			10-22-28
					56+79.2	56+77.2						
					56+52.5	56+50.5	18416		520 S. ST. FRANCIS		6-4-27	
				56+20.0	56+27.7	56+25.7						
56		100.20			56+03.0	56+01.0		#1411				12-6-19
					55+58.7	55+56.7						
					55+54.3	55+52.3						
					55+27.5	55+25.5						
55	108.21	100.10	8.11		55+02.7	55+00.7		#733				9-16-11
					54+80.2	54+78.2						
					54+53.0	54+51.0		#834				10-16-11
					54+29.8	54+27.8						
54	107.33	100.00	7.33		54+03.0	54+01.0						
					53+76.0	53+74.0						
53	106.66	99.90	6.76		53+52.0	53+50.0		#437				7-16-09
				52+83.3								
					52+39.5	52+37.5		#252				12-26-01
52	107.21	99.80	7.41		52+14.7	52+12.7						
					51+91.6	51+89.5						
					51+64.4	51+62.4						
					51+37.5	51+39.5						
51	107.49	99.70	7.79		51+12.3							
					50+89.0	50+87.0						
					50+62.0							
50	102.17	99.60	7.57		50+47.7							
				49+99.2								
49	107.14	99.50	7.64		49+90.4	49+40.8		#148	Round House			11-14-91
					48+90.4	48+88.5			736 S. St. Francis			
48				48+21.0 (0.4)	48+40.3		#551					10-21-37

#1299 - Tap - 10-18-19
 #4360 - Tap - 702 S. St. Francis - 3-4-53 - W.B. Carter
 #496 - Tap - 600 Bk. S. Commerce -
 #548 - Tap - 626 S. Commerce - Roy Bros. Flbg. 3-24-52
 #11251 - Tap - 508 S. Commerce - Joe McDonald 8-24-59 58' S. of 2nd M.H. S. of waterman
 21280 - 606 S. Commerce - 8-10-88 (Bayless - Emerg. Rep.)
 (52+63.3)