

MAIN "C" from LEWIS ST. to ENGLISH ST.

S.S. No. 1 - 1889

Plat 9-53

RECONSTRUCT SANITARY SEWER
 NO. 1 + 20
 PROJ. NO. 468-81996 (630541)
 BUILT BY INSITUFORM PLAINS INC.
 BOOKED 5-16-94 FROM AS BUILTS

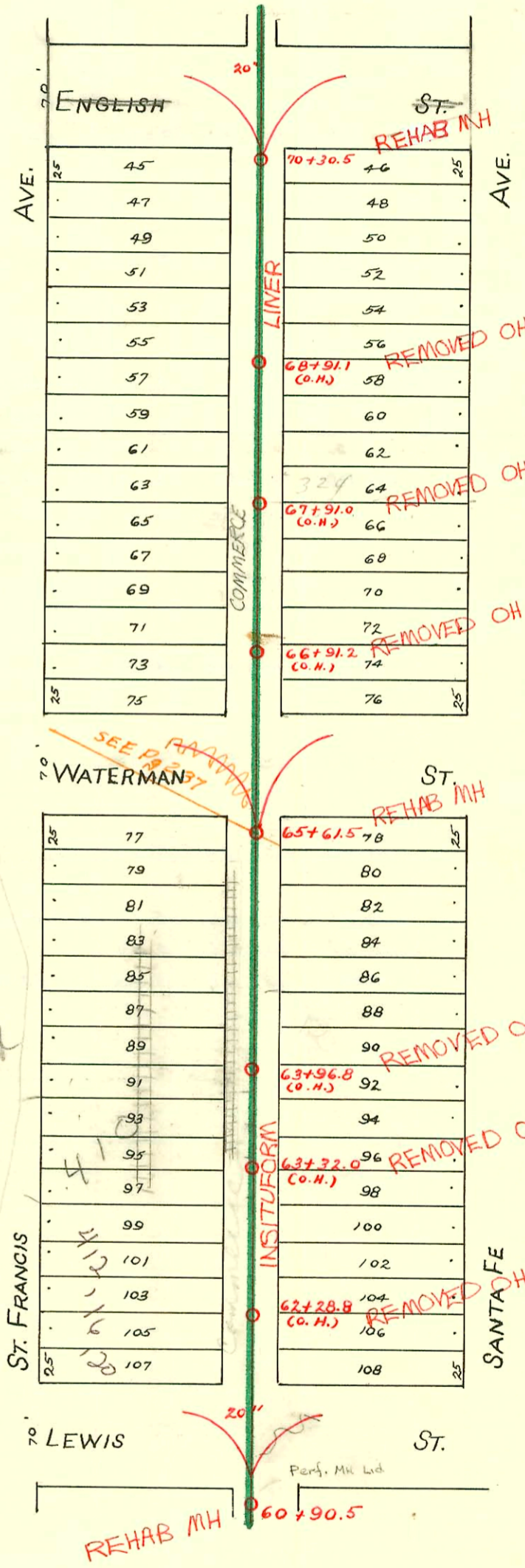
RECONNECTIONS

STATION	ADDRESS	DIRECTION
68+94.7	320 S. Commerce	East
68+10.8	324 S. Commerce	East
67+44.4	330 S. Commerce	East
67+22.1	622 E. Waterman, #1	East
67+01.7	622 E. Waterman, #1 #2	East
64+60.2	410 S. Commerce	East
63+49	416 S. Commerce	East
63+37.2	410 S. St. Francis	West
62+82.8	418, 420 & 424 S. Commerce	East
61+48.2	430 S. Commerce	East

TRAP AREA

N

SCALE: 1" = 100'



Per Bill Perkins
 12/29/08
 Connections are
 allowed to the
 main for the
 buildings not
 adjacent to any other
 sanitary sewer.
 Sewer maint. will need
 to know size of
 service line as
 soon as possible
 since saddle needed
 for such connection
 is not a typical
 stock item.
 B. Roark

Note
 No connections
 permitted to
 20" main in
 Per S. Palmer
 8/20/08
 BR

CONSTRUCTION RECORD						SERVICE RECORD						
STATION	ELEVATION		Depth	MANHOLE	4-INCH "Y" BRANCHES		No. of Permit		House Number		DATE OF PERMITS	
	Ground	Grade			North West	South East	North West	South East	North West	South East	North West	South East
70	108.66	101.60	7.06	70+30.5	70+15.2	70+13.2		?		Can't find		7-16-07
					69+90.5	69+88.5						
					69+65.7	69+63.7						
					69+41.0	69+39.0						
69	108.49	101.50	6.99		69+14.8	69+12.8				320 Commerce		9-30-48
					68+89.2	69+87.2		#1085				
					68+63.7	68+61.7						
					68+38.4	68+36.4				320 Commerce		9-28-48
68	108.49	101.40	7.09		68+19.8	68+11.6		#1038				
					67+89.2	67+87.2						
					67+65.6	67+63.6						
					67+38.2	67+36.2		#182				
67	108.92	101.30	7.62		67+12.7	67+10.7		#3		622 E. Waterman	1-13-04	4-15-49
					66+89.5	66+78.5		#236		339 Commerce	3-24-26	
					66+64.0	66+62.0						
66	108.00	101.20	6.80		66+38.8	66+36.8						
				65+61.5								
					65+31.3	65+29.3						
65	108.67	101.10	7.57		65+05.9	65+03.9						
					64+82.8	64+80.8						8-12-01
					64+55.5	64+53.5		#539		411 S. Commerce		9-30-13
					64+30.5	64+28.5		#75		410 S. Commerce	5-20-05	
64	109.24	101.00	8.24	131	64+05.5	64+03.5		#435		418 S. Commerce		10-16-16
				156	63+80.6	63+78.6						
				206	63+55.5	63+53.5						
								#428				10-10-16
					63+30.3	63+28.3						
63	108.93	100.90			63+07.0	63+05.0		#815				10-6-11
					62+81.8	62+79.8						
								#588				8-15-17
					62+61.6	62+59.6						
					62+33.5	62+31.5		#120		438 S. St. Francis		9-11-91
62	108.17	100.80	7.37		62+06.2	62+04.2						
					61+82.6	61+80.6						
61	107.82	100.70	7.12		61+59.0	61+57.0						
60				60+90.5								

#5532 - Top 410 S. St. Francis - 6-11-53 - W.B. Carter Const. Co. (Conn. 169 to. of m. to 65+61.5)
 #2613 - Top - 332 Commerce - 11-29-49 - Moore - Robertson Pkg. Co.
 3877 - Top - 300 S. Commerce - 2/24/29 Brodie Pkg.
 #3886 - 324 S. Commerce - 7-22-65 - Top - State Service - Top (68+00.1)
 #20663 - 5-10-88 - 412-16-20 S. ST. FRANCIS - NK (4th City Top 38' L-75T)
 (This map is not clear)
 #92-39371-7 - 410 S. St. Francis - N/C - City Top - 4" PVC 40 - Alley Cut - 6 ft N. of Inspection Hole - Refer to permit #92-38587-7 for partial by Robert Buckley. (11/82)
 #92-38587-7 - 410 S. St. Francis - N/C - 4" PVC 40 1/4" Fall - Partial to alley - 4" Mud O.L. Trap - 4" Running Trap (10/82)