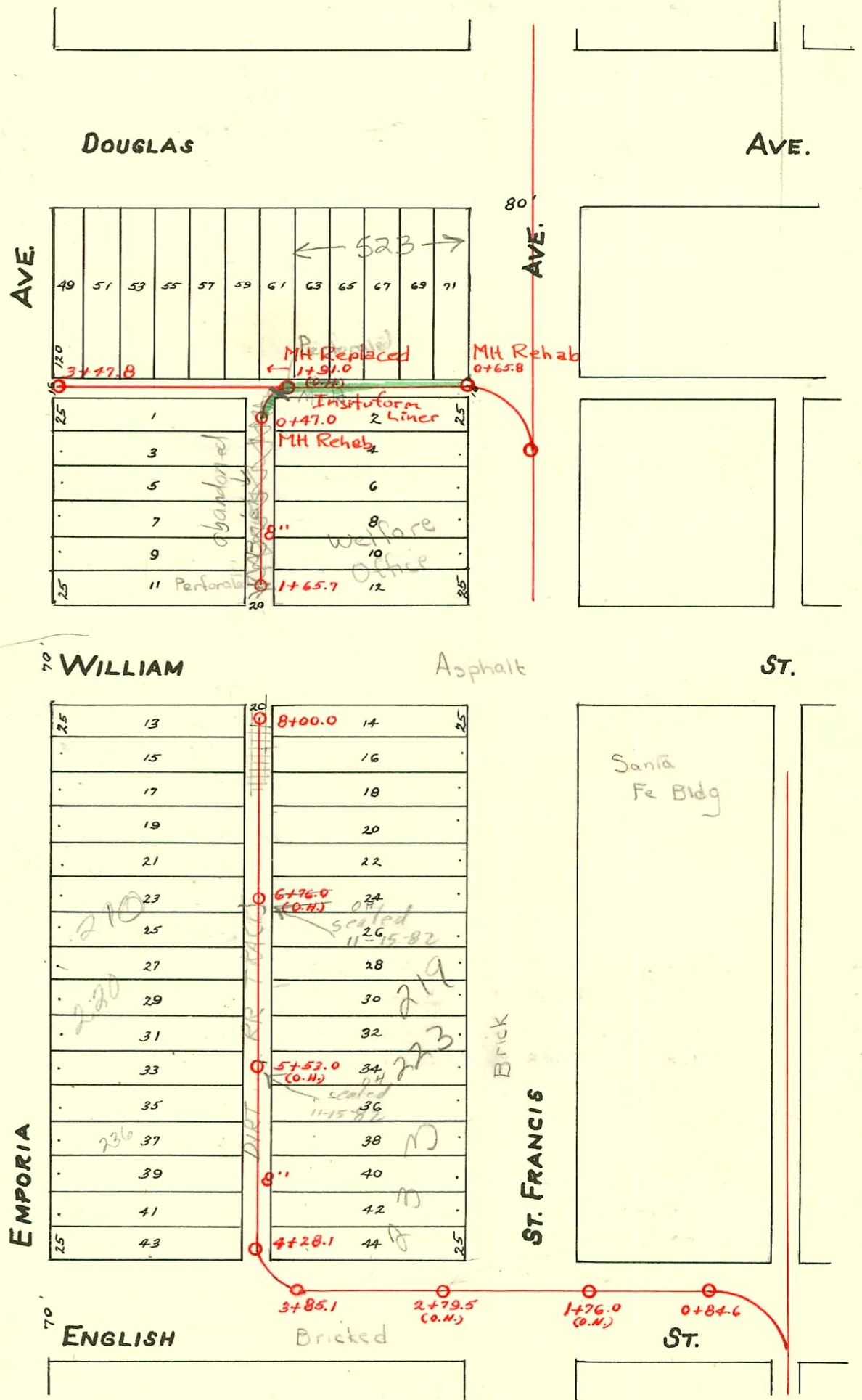


WEST SUB-MAIN "C" ON ENGLISH ST. & LAT. "N"
 WEST SUB-MAIN "C" IN ALLEY So. of DOUGLAS & LAT. "S"
 S.S. No. 1 - 1889

Plot 9-53

TRAP AREA

1989 S.S. Reconst. Phs II
 468-82011 (725002)
 Built By Insituform Plains
 Booked 10-16-90 from Plan



SWR 2000-00061	1-11-2000	523	W Douglas (Eaton Hotel)	6" PVC Donut 11.6' E of MH 1791 (2+02.6)
SWR 2000-00060	1-11-2000	523	W Douglas (Eaton Hotel)	4" PVC Saddle 56' E of MH 1791 (2+42)
SWR 2000-00059	1-11-2000	523	W Douglas (Bldg C - East serv. line)	4" PVC Saddle 56' E of MH 1791 (2+42)
SWR 2000-00058	1-11-2000	523	W Douglas (Bldg C - West serv. line)	6" PVC Predeo 36.6' E of MH 1791 (2+27.6) 1V45
SWR 2000-00062	1-11-2000	523	W Douglas Bldg A (Tower bldg)	6" PVC Predeo 26' W of MH 07658 (0+91.8) TWIN CO, 1V45
SWR 2000-00063	1-11-2000	523	W Douglas Bldg D (W. tower bldg)	4" SCH 40

CONSTRUCTION RECORD						SERVICE RECORD						
STATION	ELEVATION		Depth	MANHOLE	4-INCH "Y" BRANCHES		No. of Permit		House Number		DATE OF PERMITS	
	Ground	Grade			North West	South East	North West	South East	North West	South East	North West	South East
	110.08	105.41	4.67	1+65.7								
					1+59.8	1+61.8	#216	#2634	514-12 E William	125 S. St. Francis	11-7-05	12-2-24
					1+34.8	1+36.8		#324				5-22-17
1	110.55	104.96	5.59		1+10.0	1+12.0	#552				9-2-09	
					0+85.8	0+87.8	?	#2678		141 S. St. Francis	5-3-00	12-9-24
					0+60.9	0+62.9	?	#122			1-3-00	3-9-11
0	110.04	104.64	5.40	0+47.0				#311				4-13-11
	110.50	105.72	4.88	3+47.8								
3	110.53	105.32	5.21		3+41.8			#215			10-3-06	
					3+23.7							
					2+96.5			#246			12-5-06	
					2+73.5			#430			9-20-02	
2					2+46.5			#375	Schmitt Ply.		11-29-04	
					2+21.4			#374	"		11-29-04	
					1+96.4			?	Hotel			
					1+72.0							
					1+45.2							
1	111.23	103.72	7.51		1+24.0			?	Hotel			
					1+01.8			#416			5-5-11	
0	110.64	103.45	7.19	0+65.8	0+70.0			#627	Hotel		10-5-09	
8	109.69	105.33	4.36	8+00.0								
					7+92.5	7+90.5	#18				1-24-16	
					7+67.0	7+65.0	#720	?			8-12-21	8-19-01
					7+43.5	7+41.5						
7	110.46	104.93	5.53		7+19.0	7+17.0	#325	#2166	209 S. St. Francis		11-6-01	9-13-74
					6+92.0	6+90.0	#1831	#369	211 S. St. Francis			3-25-40
					6+67.5	6+65.5	#141	#141	210 S. St. Emporia		7-1-42	11-24-44
					6+43.0	6+41.0	#138	#286	221 S. St. Francis		5-28-87	3-14-23
6	109.58	104.53	5.05		6+16.8	6+14.8	#3228	#319	220 S. Emporia		8-16-92	8-3-05
					5+92.0	5+90.0					7-1-42	4-2-29
					5+67.3	5+65.3		#455			7-7-67	5-19-17
					5+43.0	5+41.0		#19				7-22-09
5	109.56	104.13	5.43		5+18.0	5+16.0	#608					1-24-16
					4+92.6	4+90.6	#3827		240 S. Emporia		9-24-09	
					4+67.6	4+65.6	#3064				7-7-67	
					4+43.0	4+41.0					1-16-50	
4	109.52	103.84	5.68	4+28.1								
3	109.02	103.65	5.37	3+81.5								
2	109.20	102.93	6.27									
1	109.19	102.53	6.66	0+84.6								

99-011 11-10-74 520 E William - McCullough

#905 - Tap - 7-27-23
 #1731 - Tap - 214 S. Emporia - Dermody Pibg. Co. - 12-11-29
 #2193 - Tap - 210 S. Emporia - Burgon Pibg. Co. - 7-1-42
 #411 - Tap - 233 S. St. Francis - Ted Kendall - 3-25-54
 6151 608 104 Emporia Subully 1-15-58