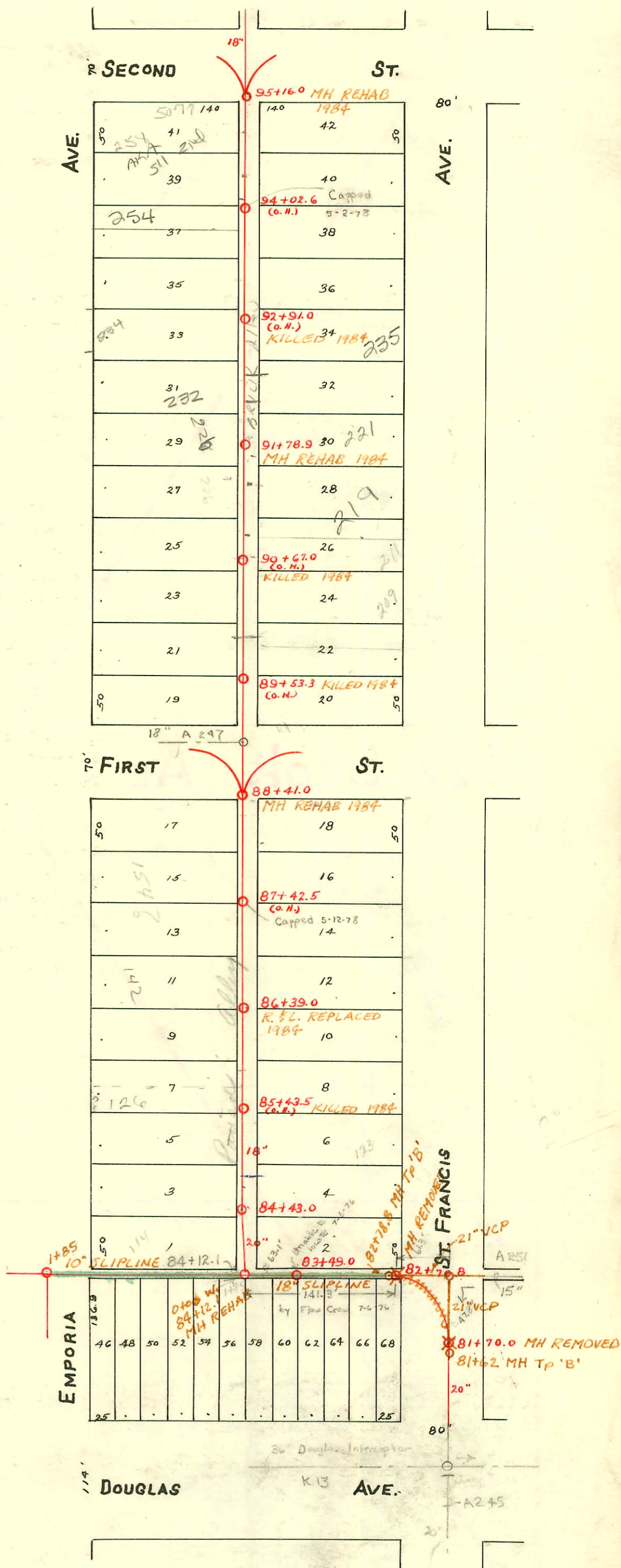


MAIN "C" FROM DOUGLAS AVE. TO SECOND ST.  
S.S. No. 1-1889

Plat 9-50

TRAP AREA



Sewer Rehab & Mosley Relief Sewer  
 Dist 1 & 20, North of Douglas  
 468-80-990-80271-000-000-001  
 Built By Stannard Const.  
 Booked 7-31-85 From As Built

83+83 6" Service South 7-17-84  
 83+76.5 6" Service South 7-17-84  
 83+13 6" Service South 8-13-84  
 0+63 6" Service South 7-18-84

SCALE 1" = 100'

# 23523-7 6/6/91 - 507 E. 2nd - Plymouth  
 # 91-29033-7 8/7/91 - (234 N. Emporia) - Tim Lubbers (S/S 120 N. & M.H.)

CONSTRUCTION RECORD

SERVICE RECORD

STATION	ELEVATION		Depth	MANHOLE	4-INCH "Y" BRANCHES		No. of Permit		House Number		DATE OF PERMITS	
	Ground	Grade			North West	South East	North West	South East	North West	South East	North West	South East
95	110.40	104.60	5.80	95+16.0	94+93.0 94+74.0 94+65.5	94+95.0 94+67.5	#235267 #680	#382	258 N Emporia	257 N St Francis	6-12-11 5-18-81	6-11-17
					94+43.0 94+16.5	94+45.0 94+18.5	#247 #62	#1938 #370		St Francis	10-20-08	4-1-48
94	110.49	104.50	5.99		93+91.0 93+66.0 93+41.5	93+93.0 93+86.0 93+43.5	#1766 #272 #22	#195 #281 #196	252 N Emporia	239 S St Francis	9-29-94 9-21-49 1-24-08	1-31-06 10-11-05 5-11-17 10-11-05
93	110.90	104.40	6.50		93+16.0 92+93.0 92+67.0 92+40.5	93+18.0 92+95.0 92+69.0 92+42.5		#1590 #2720 #151		239 N St Francis 237 N St Francis		11-23-48 9-22-42 4-16-01 2-24-30
92	110.73	104.30	6.43	91+78.9	92+16.0 91+91.0	92+18.0 91+93.0	#192 #1196	#114 18210	244 N Emporia	241 N St Francis	4-22-95 5-21-46	10-7-36
					91+65.5 91+41.5	91+67.5 91+43.5		#153		231 St Francis		3-21-10
91	110.46	104.20	6.26		91+16.5 90+92.0 90+69.0 90+42.5	91+18.5 90+94.0 90+71.0 90+44.5	#99 1/2 #75	#20 2001-00895 #152		215-219 St Francis	1-14-20 1-13-00 4-26-06	3-19-10
90	110.88	104.10	6.78		90+17.5 89+96.0 89+68.0 89+42.5	90+19.5 89+94.0 89+70.0 89+44.5	#1122	#154	200 N Emporia	205 N St Francis	12-30-26	10-4-38
					89+18.0	89+20.0		#40				3-29-92
89	111.24	103.75	7.49				#181					3-12-20
88	111.29	103.65	7.64	88+41.0	88+21.5 87+95.5 87+71.0 87+45.5	88+23.5 87+97.5 87+73.0 87+47.5	#322	?				6-24-13 5-19-99
	112.08	103.55	8.53		87+20.5 86+95.0 86+69.5 86+43.0	87+22.5 86+97.0 86+71.5 86+45.0	#189 #415	#13871 #79	154 N Emporia	519 E 157 125 N St Francis	1-9-80 10-19-92 9-5-99	2-18-69 4-10-25 1-13-31
87	111.24	103.45	7.79		86+22.5 85+96.0 85+72.0 85+46.0 85+21.0	86+24.5 86+98.0 86+74.0 85+48.0 85+23.0	#1063	#3150 #706	134 N Emporia		11-20-52 10-11-90	4-19-93 8-23-22
86	111.29	103.30	7.99		84+71.0 84+69.0 84+51.0	84+71.0 84+53.0 84+48.7	#403 #189	#2783 #4503	120 N Emporia	115 N St Francis	5-13-26 8-25-06	10-26-71 12-9-40 3-18-53
85	110.88	103.10	7.78									
84	111.10 111.20	103.04 102.95	8.06 8.25	84+43.0 83+49.0								
83					83+42.3 N	83+40.3 S						
82					83+14.8							
82	111.50	102.87	8.63	82+70.8				#232				3-3-20
81	111.24	102.78	8.46	81+70.0								

2003-02743-10127103-226 N Emporia - Wichita Exc - City Wyl. repair 6" Precedo 4x4 Reducer, 1V22, 1V45, 1TWINCO  
1 running trap (4V45) 11"40 PVC

2001-00895-41101-235 N St Francis - Prof. Mech. Cont. - 4" SCH40 - Tied back to 6" clay tile, trap installed,  
1TWINCO, 2V22, 1KICKOUT

90 15097 (009-17) (11-11-11) Kenning 11-22-75-99' 54" H  
5113 - (2187) Emporia 4-23-92 - 11 Kenning 91+78.9-5

11134 - Deep off - 500 E Douglas - 28 Kenning 10-29-68 (30' dist. at edge of alley no. of Douglas  
(30' dist. of east side of Emporia)

#00016 Repair 142 N Emporia Bell See 4-8-80 (26+39.0)

1533 - Top - 515 E. 2nd - 12-11-36 - W.W. Pray  
195-70p - 200 N Emporia - 3-22-37 - Moore, Robertson Pkg.  
432 - Top - 0-70 - 300 E Douglas - 10-11-41 - J.E. Lonsbown  
#1835 - 258 N Emporia - Davidson Pkg. Co - 11-30-48 - Used old connection  
#1841 - 134 N Emporia - Dermody Pkg. Co - 12-2-44 - Used old connection  
#5084 - Top - 200 N Emporia - 6-25-51 - Prox Bros Pkg.  
#2943 - Top - 233 N St Francis - 4-16-46 - Simmons Pkg.  
#1223 - Top - 216 N Emporia - 12-2-47 - Davidson Pkg.  
#2200 - Used old conn. - 232 N Emporia - 10-25-49 - W.A. Gitttrich  
#4547 - Top - 530 E Douglas - 3-20-53 - Joe McDerold

# B 967 - Deep off - 501 S 1st - 28 Kenning 3-3-64  
C76037 Seal off (154 N Emporia) 7-9-80 R.D. Campbell 70'S 1st