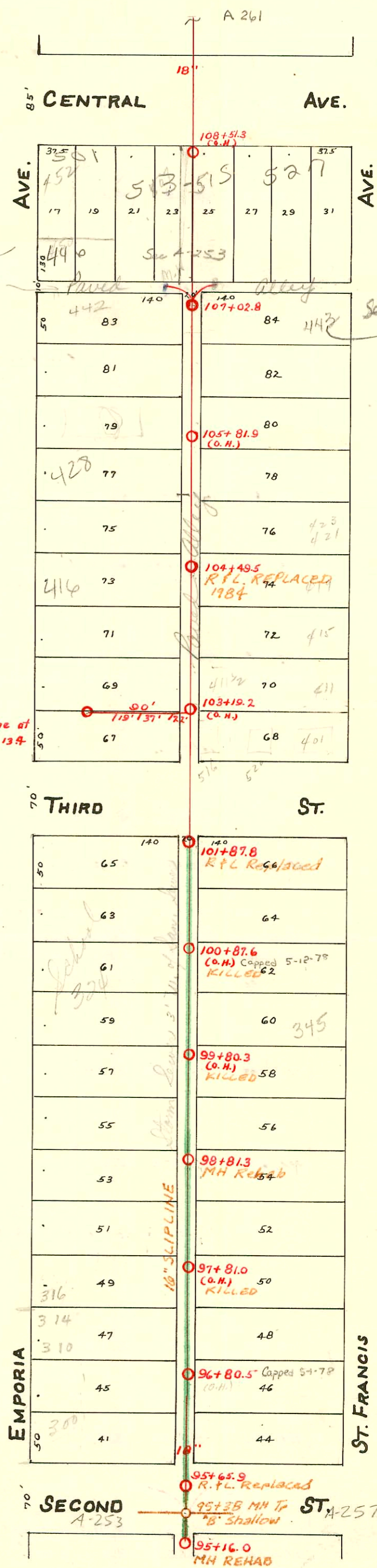


MAIN "C" FROM THIRD ST. TO CENTRAL AVE.  
S.S. No. 1 - 1889

Plat 9-50

TRAP AREA



- 101+12.8 6" Service West 4-17-84
- 100+60.8 6" Service West 4-17-84
- 99+89.8 6" Service West 4-17-84
- 96+15.3 6" Service East 5-10-84
- 97+92.3 6" Service East 5-14-84

Sewer Rehab & Mosley Relief Sewer  
 Dist 1 & 20, North of Douglas  
 468-80-990-80271-000-000-001  
 Built By Stannard Const  
 Booked 8-2-85 From As Built

See page 253

See page 259

Private line at Sta. 103+13.4

EMPORIA

ST. FRANCIS

SECOND

ST. A-257

CONSTRUCTION RECORD

SERVICE RECORD

STATION	ELEVATION		Depth	MANHOLE	4-INCH "Y" BRANCHES		No. of Permit		House Number		DATE OF PERMITS	
	Ground	Grade			North West	South East	North West	South East	North West	South East	North West	South East
108		106.00		108+51.3(6.H.)								
					107+26.6	107+28.6		#317		513+515 C. Central		8-26-04
107	112.58	105.90	6.68	107+02.8								
					106+91.0	106+93.0		#494		4 350 N. Emporia		8-30-92
					106+64.0	106+66.0		#127				
					106+37.5	106+39.5		#51				5-13-95
106	113.27	105.80	7.47		106+15.5	106+17.55		#2399		423 N. St. Francis	12-15-66	9-14-52
					105+88.7	105+90.7		#710	#5	422-34 N. Emporia	12-24-10	2-7-08
					105+64.0	105+66.0						
					105+39.3	105+41.3						
105	112.51	105.70	6.81		105+14.1	105+16.1		#765	?	428 N. A Emporia	9-18-98	3-15-01
					104+88.5	104+90.5						2-9-00
					104+63.7	104+65.7		#4721		423 N. St. Francis		5-10-55
				104+49.5								
					104+38.7	104+40.7						5-9-01
104	112.43	105.60	6.83		104+14.0	104+16.0		#68		415 N. St. Francis	11-13-69	1-22-69
					103+88.5	103+90.5		#67		412 N. Emporia	4-13-08	5-27-03
					103+63.4	103+65.4		#184	#36236	410 N. Emporia	8-13-08	3-27-01
					103+27.3	103+29.3		#144	#2361	411 N. St. Francis	8-13-08	12-4-72
103	112.78	105.50	7.28		103+13.4	103+15.4		#984	?	401 N. St. Francis	12-16-68	3-23-67
						103+07		#383		516 520 E 3rd	8-11-22	11-19-90
					102+88.5	102+90.5						12-4-15
102	112.98	105.40	7.58		102+65.0	102+67.0		#787		401 N. St. Francis		7-11-08
				101+87.8								
					101+63.0	101+65.0						
					101+38.8	101+40.8		#97				8-15-91
101	113.28	105.30	7.98		101+14.1	101+16.1						10-15-01
					100+90.0	100+92.1		#572				6-21-11
					100+61.3	100+63.3		#562	#123			6-17-11
					100+37.2	100+39.2		#97	#128	St. Francis 341 1/2 N.		8-15-91
								#527		St. Francis		6-8-11
100	111.92	105.20	6.72		100+16.8	100+18.8						10-19-03
					99+88.7	99+90.7		#573		no Record		4-8-01
					99+66.3	99+64.3						10-9-01
					99+40.0							2-21-01
					99+38.0							
99	110.98	105.10	5.88		99+13.5	99+15.5		#105	?			8-29-91
					98+89.3	98+91.3						4-29-02
				98+81.3								
					98+64.0	98+66.0		#196		329 N. St. Francis		9-5-01
					98+39.3	98+41.3		#105				6-1-04
98	110.88	105.00	5.88		98+14.3	98+16.3		#131				8-29-91
					97+90.2	97+92.2		#432		321-23 N. St. Francis		6-19-93
					97+63.0	97+65.0		#152		316 N. Emporia		10-16-41
					97+38.5	97+40.5						9-21-94
97	110.45	104.90	5.55		97+16.0	97+18.0		#569		312 N. Emporia	8-10-70	8-10-70
					96+91.2	96+93.2		#549		315 N. St. Francis	9-9-09	6-26-06
					96+65.0	96+67.0		#225	#125	301 N. Emporia	8-10-70	5-22-28
					96+41.0	96+43.0				302 N. Emporia	4-29-13	9-22-91
96	110.28	104.80	5.48		96+14.5	96+16.5		#224		302 N. Emporia	8-10-70	8-10-70
					95+94.0	95+96.0		#223	?	302 N. Emporia	4-29-13	4-29-13
				95+65.9								4-21-02
95	110.41	104.70	5.71	95+16.0								

980135950701 11/24/98 416 N Emporia McClung's - sealed with concrete 28' S. of MH

4917 - 408 N. Emporia - Al Henning 12-14-81

2.0 C60930-424 N. Emporia - Al Henning 4-29-77 (104+72.0)

C14295-345 N. St. Francis (Chas. Brown) 6-2-69 (100+15.3)

#214238 Seal off (pin) 520 E. 3rd Al Henning - 5-27-69 (conn. W 516 E 3rd) (103+07)

#845 - 11-16-20 452 N. Emporia (Ally)

#2106 - 419 N. St. Francis - 9-24-54 - Used old connection - Cherry Pibg. Co.

Top of 310 N. Emporia (C20455 - J. C. Levers) - 8-10-70 (97+16.0 - conn. with 312 N. Emporia)

#623 - Top - Central Intermediate School - 6-21-30 - Connor Const. Co.

#53 - Top - 515 E. Central - 5-6-46 - Horley Riggs.

#650 - 427 N. St. Francis - 4-30-56 - Used old conn. - Callison Pibg.

#651 - 427 N. St. Francis - 4-30-56 - Used old conn. - Callison Pibg.

11704, 11705 Trailer 415 N. St. Francis Regg. Pibg. 10-15-59 - Seal off

B-734 - Seal off 507 E. Central 1-24-64 - Al Henning

B-6224 Seal off 444 N. Emporia 8-23-66 - Al Henning