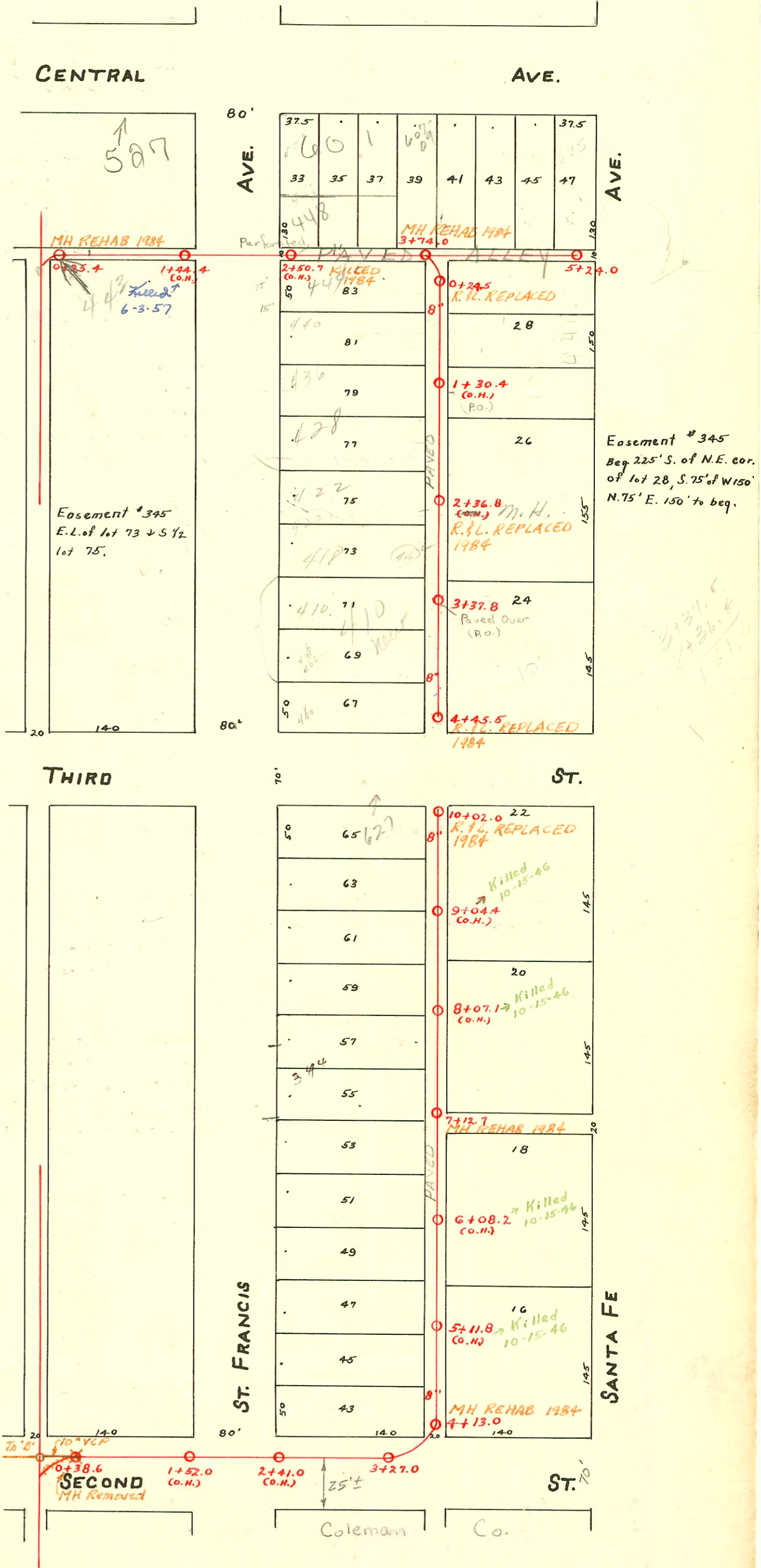


Plat 9-50

TRAP AREA



CONSTRUCTION RECORD

SERVICE RECORD

STATION	ELEVATION		Depth	MANHOLE	4-INCH "Y" BRANCHES		No. of Permit		House Number		DATE OF PERMITS	
	Ground	Grade			North West	South East	North West	South East	North West	South East	North West	South East
	111.59	108.44	3.15	4 + 45.5	4 + 40.5	4 + 42.5						
4	111.88	108.33	3.55		4 + 26.5	4 + 28.5	#396	11-3-57	406 N. St. Francis	622 E. 3rd	7-16-02	8-22-47
					4 + 02.0	4 + 04.0	#280	#1296			7-19-04	
					3 + 78.0	3 + 80.0						
					3 + 54.0	3 + 56.0						
					3 + 29.5	3 + 31.5	#1114		410 N. St. Francis		10-19-57	
3	112.59	108.08	4.51		3 + 05.5	3 + 07.5	#6781	#890	416 N. St. Francis	413 N. Santa Fe	5-6-57	4-21-24
					2 + 81.7	2 + 83.7	#12346		418 N. St. Francis	421 N. Santa Fe	5-8-02	
					2 + 57.6	2 + 59.6	#15888	#2403	418 N. St. Francis		9-12-50	11-10-49
					2 + 33.0	2 + 35.0	#15888		418 N. St. Francis		7-15-62	
2	113.34	107.83	5.51	2 + 36.8 m.H.	2 + 09.3	2 + 11.3	#15888	#249	422 N. St. Francis		10-25-67	
					1 + 66.6	1 + 68.8	#1129		421 N. Santa Fe		4-4-21	5-16-24
					1 + 50.5	1 + 62.6	#5198		428 N. St. Francis		3-8-66	
					1 + 35.7	1 + 37.7	#82436		428 N. St. Francis		10-19-65	
1	113.61	107.53	6.03		0 + 98.2	0 + 85.1					5-26-98	
					0 + 88.2	0 + 78.4	#3742		440 N. St. Francis		7-6-65	
					0 + 64.4	0 + 66.4	#410		444 N. St. Francis		4-27-22	
					0 + 40.5	0 + 42.5	#139		425 N. Santa Fe		11-3-03	
0	113.10	107.39	5.71	0 + 24.5	0 + 28.0	0 + 30.0		#1556				4-20-42
				5 + 24.0								
					5 + 21.8	5 + 03.6						
5	114.05	107.65	6.40		4 + 83.8	4 + 61.7	#37		625 E. Central		3-27-07	
					4 + 37.5	4 + 13.4	#94		611 E. Central		3-16-09	
4	112.99	107.40	5.59		4 + 13.4	3 + 79.7						
	112.55	107.33	5.22	3 + 74.0	3 + 64.3	3 + 40.1	#31192		607 E. Central		2-14-73	7-8-07
					3 + 40.1	3 + 15.3						
3	112.33	107.15	5.18		2 + 91.2	2 + 67.3	#43		No Record		7-10-95	
					2 + 43.0	1 + 26.6						
2	111.77	106.90	4.87		1 + 26.6	0 + 74.1						
					0 + 74.1	0 + 52.8	#11	96-20-2857	No Record	447 N. St. Francis	3-21-95	11-17-47
1	112.32	106.65	5.67		0 + 52.8	0 + 28.8	#1129		447 N. St. Francis			
0	112.32	106.46	5.86	0 + 25.4	0 + 28.8							
10	113.00	109.20	3.80	10 + 02.0	9 + 99.4	9 + 97.4	#8561		609 E. Central		12-12-68	8-27-98
					9 + 75.0	9 + 73.0	#15210	#134	627 E. Central		7-31-69	6-19-93
					9 + 51.7	9 + 49.7	#305		352 N. Santa Fe		12-12-63	9-27-07
					9 + 27.0	9 + 25.0		#438	353 N. Santa Fe			7-18-18
9	112.02	108.80	3.22		9 + 02.0	9 + 00.0	#15		No Record			4-14-96
					8 + 78.0	8 + 76.0						
					8 + 54.0	8 + 52.0	#298		No Record	344 N. St. Francis	9-24-07	4-26-29
					8 + 30.0	8 + 28.0	#441		342 N. St. Francis		12-15-17	
8	111.67	108.40	3.27		8 + 05.8	8 + 03.8	#345		334 N. St. Francis		5-29-17	
					7 + 81.7	7 + 79.7	#245		334 N. St. Francis			10-28-08
					7 + 57.2	7 + 55.2	#318		336 N. St. Francis		12-20-47	
					7 + 12.7	7 + 33.4	#824		335 N. Santa Fe			5-31-23
7	110.99	108.00	2.99		7 + 09.2	7 + 07.2						
					6 + 85.5	6 + 83.5						
					6 + 60.5	6 + 58.5						
					6 + 37.0	6 + 35.0						
6	110.48	107.60	2.88		6 + 12.2	6 + 10.2	#197		316 N. St. Francis		9-6-06	
					5 + 88.7	5 + 86.7						
					5 + 64.5	5 + 62.5						
					5 + 40.2	5 + 38.2	#941		312 N. St. Francis		5-23-19	
5	110.77	107.20	3.57		5 + 15.8	5 + 13.8						
					4 + 92.5	4 + 90.5	#47		304 N. St. Francis		2-3-13	
					4 + 68.0	4 + 66.0	#226		624 E. Second			4-29-18
					4 + 43.6	4 + 41.6						
4	110.76	106.86	3.90	4 + 13.0	4 + 19.1	4 + 17.1	#851		612 E. 2nd		10-5-26	
3	110.18	106.51	3.67	3 + 27.0								
2	110.78	106.00	4.78									
1	109.85	105.60	4.25									
0	109.87	105.31	4.56	0 + 38.6								
	110.54	105.07		0 + 00								

#82282 - 410 N. Francis - all Henning - 5-14-68 (Tap 3+01)

#1561 - Tap - 425 N. Santa Fe - 4-20-42 - J.N. Hanna
 #1139 - 448 N. St. Francis - 10-11-43 - Burgon Pkg. Co. - Used old connection
 #2089 - Tap - 347 N. Santa Fe - 6-11-45 - Simmons Pkg. Co.
 #603 - Tap - 436 N. St. Francis - 9-4-46 - Joe's Pkg. Co.
 #780 - Tap - 330 N. St. Francis - 9-30-46 - Davidson Pkg. Co. (Sealed 38.5' up MH and 10' from wye at cleanout)
 #3454 - 601 E. Central - 12-9-52 - Vaughn Pkg. Co. - Used old connection → 96-20-942
 #712 - 410 N. St. Francis - 4-20-54 - Roy Pkg. Co. - Repair
 Tap - 443 N. St. Francis - Robt. J. ... 4-14-60 Tap MH (0+25.4)
 Seal off - B-732 - 447 N. St. Francis - all Henning - 1-24-64
 Seal off - B-598 - 440 N. St. Francis - all Henning - 7-12-66
 Tap - C1036 - 440 N. St. Francis - Henning - 9-6-68 (0+81.7)