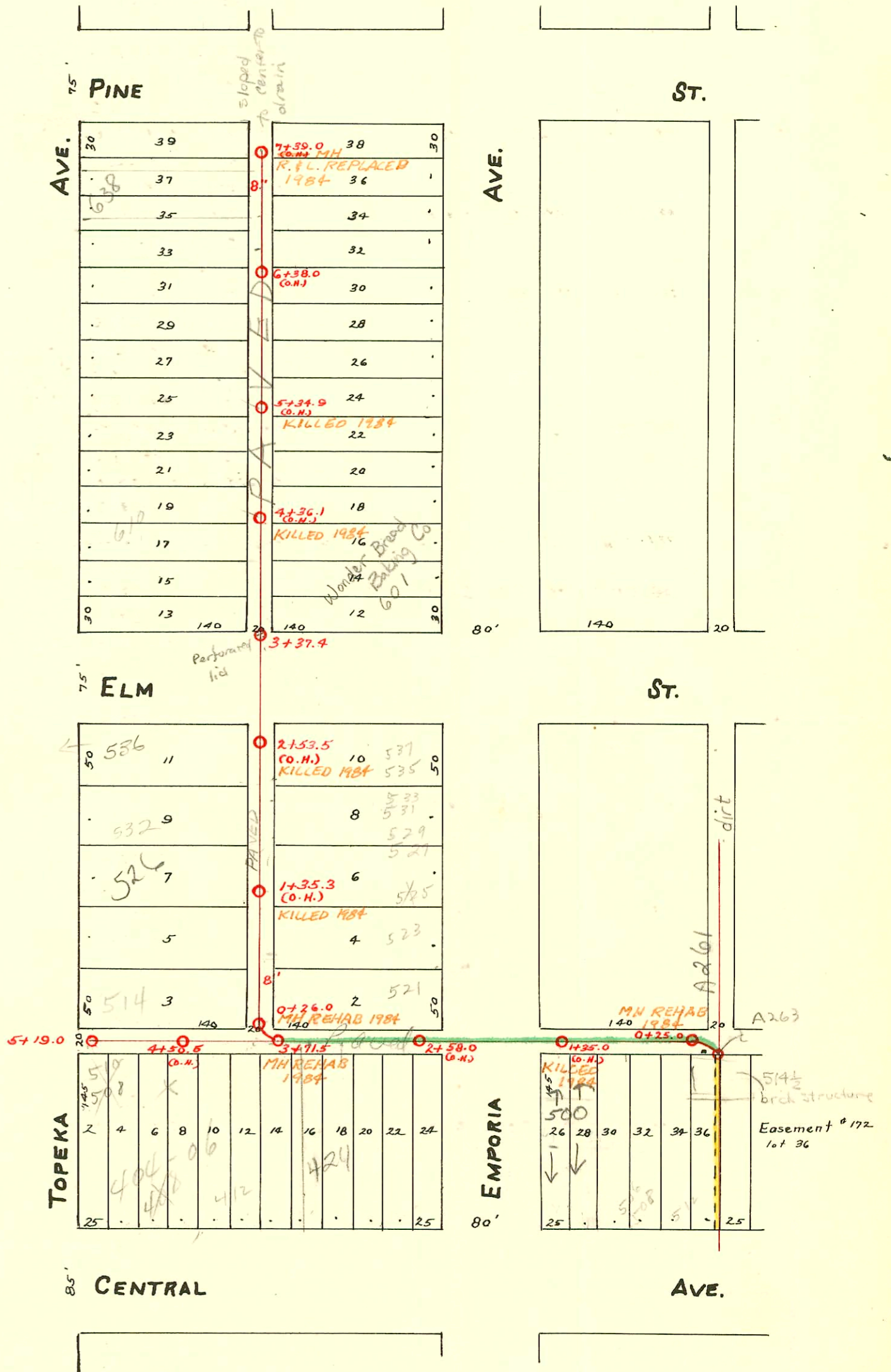


Plat 9-47

TRAP AREA



1990 SAN. SEWER RECONST., PHS III  
PRJ. No. 468-82080 (630442)  
Built By INSITUFORM PLAINS, INC.

CONSTRUCTION RECORD

SERVICE RECORD

STATION	ELEVATION		Depth	MANHOLE	4-INCH "Y" BRANCHES		No. of Permit		House Number		DATE OF PERMITS	
	Ground	Grade			North West	South East	North West	South East	North West	South East	North West	South East
7	112.27	109.56	2.71	F.T. 7+39.0(6.11)	7+32.0	7+34.0	031638		640 N Topeka		3-9-73	
	113.10	109.46	3.64		7+07.4	7+09.4						
					6+85.0	6+87.0						
					6+59.0	6+61.0	#26	16542	636 N Topeka	531-330 Emporia	3-20-93	6-27-86
					6+34.5	6+36.5	#95		634 N Topeka		5-18-93	
6	112.45	109.21	3.24		6+10.5	6+12.5	#74		630 N Topeka		7-17-90	
					5+86.0	5+88.0	#2701				12-15-24	
					5+61.5	5+63.5			629 N Emporia			5-16-63
					5+37.5	5+39.5	#72				7-15-90	
5	112.10	108.96	3.14		5+12.8	5+14.8						
					4+88.0	4+90.0	#345	#103	620 N Topeka	617 N Emporia	6-10-09	5-25-08
					4+63.5	4+65.5	C4384	#55	616 N Topeka	615 N Emporia	11-15-74	5-2-03
					4+45.2	4+38.2		#1041	610 N Topeka	605 N Emporia		7-1-19
4	112.51	108.71	3.80		4+20.2	4+14.0	C15543		600 N Topeka		8-21-69	
					3+96.0	3+92.0	C3852				7-10-67	
					3+65.2	3+67.2						
3	112.25	108.46	3.79	3+37.4	3+41.0	3+43.0	?	#433		Bakery	-	89
					2+49.8	2+51.8						8-5-13
					2+25.8	2+27.8		#168		551 N Emporia		4-7-09
2	112.54	108.21	4.33		2+03.5							
						1+99.0						
					1+77.0	1+79.0	#171		532 N Topeka		9-7-05	
					1+52.5	1+54.5	#106	#45	LOT 7	S.W. Cor. Emporia & 1st	5-3-94	3-21-08
					1+27.5	1+29.5	2000-D1221	#873	526 N Topeka	Deep River	5-17-00	9-18-30
1	112.21	107.96	4.25		1+03.0	1+05.0		#62		10		10-9-95
					0+79.0	0+81.0	#895	#661	522 N Topeka	523 N Emporia	10-21-26	2-15-02
					0+56.0	0+43.7	#1631	#41		521 N Emporia		11-29-10
					0+29.3	0+31.3						4-17-03

0	111.71	107.77	3.94	0+26.0								
				5+19.0								
5	112.00	108.03	3.97			5+13.0			508 & 510 N Topeka		1-23-68	
						4+94.3		Sub #6534			7-19-37	
						4+69.7		#204		Central	10-17-05	
						4+44.8						
						4+28.0		#247		408 E. Central	4-28-17	
4	111.74	107.78	3.96			4+18.0		Sub #28053		412 E Central	9-20-71	
						3+93.5						
						3+77.0						
						3+65.0		#174		412 E Central	8-10-06	
						3+45.0		#489	505 N Emporia	414 E Central	8-5-09	10-25-41
						3+17.6		508-42612		416 E Central	8-10-10	8-10-10
3	111.55	107.53	4.02		3+03.6	3+03.6		17896		414 E Central	3-10-87	
					2+71.0	2+71.0		#3409		426-28-30 E. Central	12-18-50	
2	111.95	107.28	4.67		2+46.5							
					1+39.5							
					1+27.0			94-80067		500 E Central	5-25-94	
1	111.70	107.03	4.67		1+02.0			#64		511 E Central	5-19-03	
					0+77.5			#138		506-08 Central	8-19-86	10-30-03
					0+53.6							
0	111.35	106.84	4.51	0+25.0		0+28.7		#197		514 E Central	3-6-28	

2000-D1221 - 526 N TOPEKA AVE - S11700-R - WICHITA EXC - 4" SCH 40 - 1 WYE FOR 2nd KO - Repl. 14' ON HIGH END

15470 - (527 N Emporia) - 1-20-86 Al Henning 0+26.0 N (1+56.0) - 130.0 N

97155547 9-3-97 638 N Topeka Henning -

(sealed with 420-32 E. Central)

Tap C33704 418 E. Central - 7/19/72 - Glen Prews 3+522  
 Tap C33703 412 E. Central - 7/19/72 - Glen Prews 3+382

Tap #10325 - 404-06 E. Central Gerald Thompson 9-4-68 (4+12.4)

Tap - 2789 - 516 N Emporia - 3-8-46

Tap - 2790 - 516 N Emporia - 3-8-46

Tap - 1931 - 601 N Emporia - 8-14-50 - Howard Shepherd

#6772 - 6 on 8 wye - 601 N Emporia

#8181 - Tap trailer - 514 N Topeka - Frederick Olby 9-30-58

B-431 - Seal off - 408 E Central - Bowen Olby 11-21-63

21838 - 536 N Topeka - 11-4-88 - Al Henning - 2+10.0

94-7047-2 5-9-94 506 N Emporia -