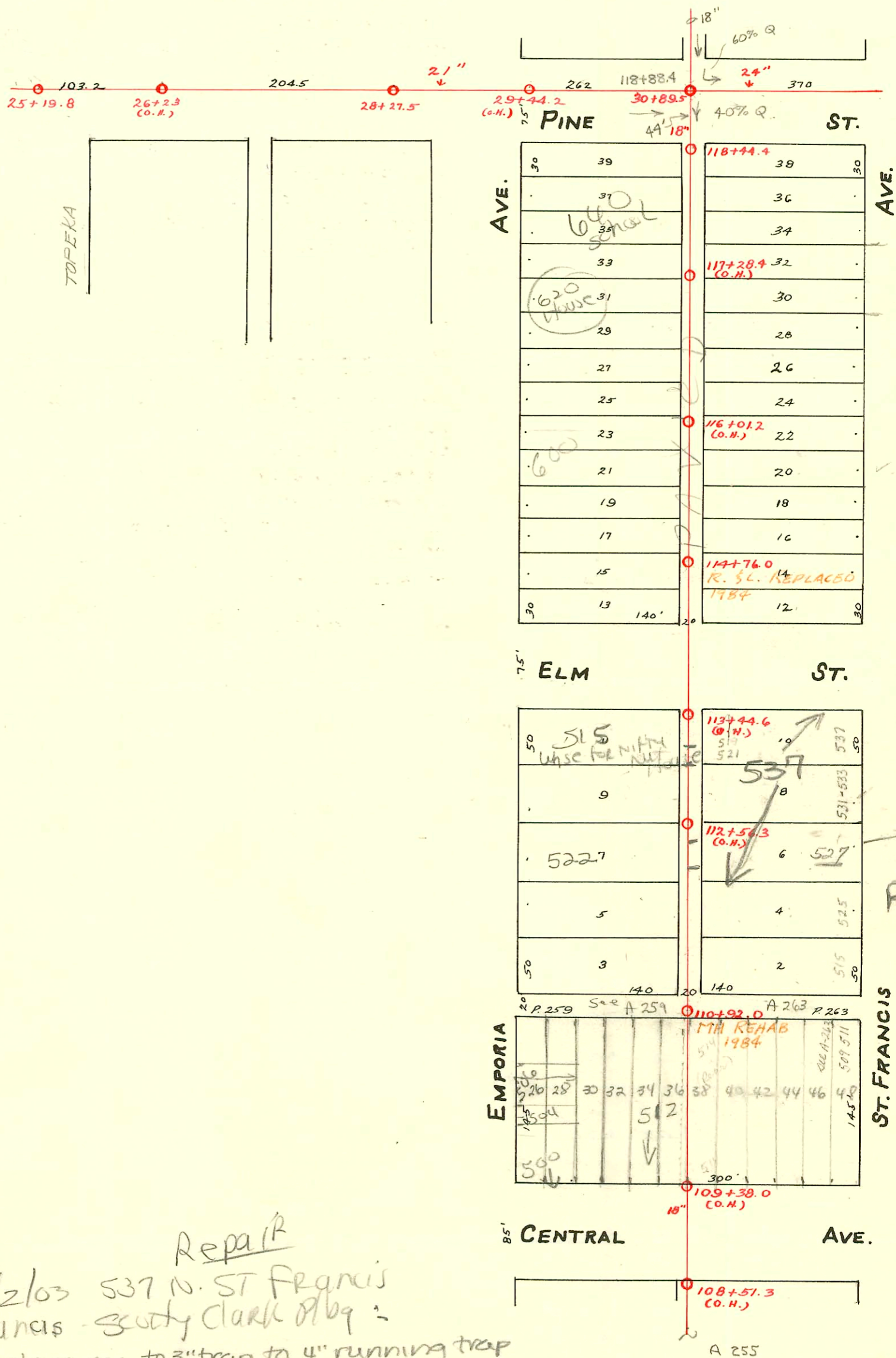


MAIN "C" FROM CENTRAL AVE. TO PINE ST.
S.S. No. 1-1889

Plat 9-47

Trap Area



New cooler add to Rear of 527

Repair

SWR 2003-02282 9/2/03 537 N. ST Francis
AKA 527 N. ST Francis - Scotty Clark P/bq
from 3" at bldg thru cooler area to 3" trap to 4" running trap
w/ cleanout (2V45, twin co, 2V45) to 4" clay

SWR 2003-00540 2/28/03 670 N Emporia - Three R P/bq sealed w/concrete 162' N
of MH 114+76 (116+38)

SGR 2003-00198 1-21-03 515 E Elm (whse for Nifty Nut House) Scotty Clark
Predco 147' S of MH 114+76 (113+29) 1TWIN co, 5V45

SWR 2003-02078 8/7/03 640 N Emporia (add to Metro Midtown school)
Boardman: City Tap 4" Predco 117' N of MH 114+76 (115+93) 2V45, 1V45,
4V45 (Running Trap) 2 twin co, 1 Wye

CONSTRUCTION RECORD

SERVICE RECORD

STATION	ELEVATION		Depth	MANHOLE	4-INCH "Y" BRANCHES		No. of Permit		House Number		DATE OF PERMITS	
	Ground	Grade			North West	South East	North West	South East	North West	South East	North West	South East
				118+44.4								
118	112.60	107.00	5.60		118+29.5 118+09.5 117+71.4 117+42.7 117+30.0	118+31.5 118+11.5 117+73.4 117+44.7 117+14.0	#485 #470 #565 ?	#16 ? ?	S.E. Cent. of Pine St. Emp. (School) NO Record ?		9-4-13 9-21-15 3-13-01	4-4-95
117	112.30	106.90	5.41		117+12.0 117+00.0 116+82.2 116+54.6 116+27.5 116+03.5	117+14.0 116+84.2 116+56.6 116+29.5 116+05.5	? #62 #841 #14109 #450		School at Emp. & Pine 625 N. St. Francis 616 N. Emporia		4-8-01 3-11-16 4-25-61 8-14-13	11-16-17
116	111.43	106.80	4.63		115+77.5 115+53.0 115+28.5 115+03.6 114+81.0	115+79.5 115+55.0 115+30.5 115+05.6 114+83.0	? #263	Jeff C59713 C52615 #131	612 N. Emporia	613 N. St. Francis 614 N. Emporia	4-13-00 2-1-77 12-1-75	2-1-77 12-1-75
115	111.78	106.70	5.08	114+76.0	114+54.2 114+29.0 113+25.3 113+01.3 112+77.0	114+56.2 114+31.0 113+27.3 113+03.3 112+79.0	? #191	5044239 C65509 #27 #1659 #336	520 Elm 522 N. Emporia	521 N. Emporia 523 N. Emporia	10-7-07 3-24-78 3-9-06 3-20-47	4-1-74 3-24-78 3-9-06 6-7-09
114	111.51	106.60	4.91		112+28.3 112+03.8 111+77.3 111+51.5 111+28.3	112+30.3 112+05.8 111+79.3 111+53.5 111+30.3	? #1250	65509 Jeff C21458	527 N. St. Francis 525 N. St. Francis 523 N. St. Francis		3-23-78 7-27-00 11-27-28	10-22-70
113	111.71	106.50	5.21		111+02.5 110+92.0 110+14.8	111+04.5 110+16.8	#585 #523 #146	C76459 #192 #146	576 N. Emporia 516 N. Emporia 508 N. Emporia	515 N. Emporia	7-12-27 5-24-17 9-5-94	2-12-80 2-24-04
112	111.53	106.40	5.13		108+51.3 (6.4)							
111	111.33	106.30	5.03									
110	111.79	106.20	5.59									
109	111.83	106.10	5.73									
108												
Line in Pine St.	25	112.97	107.28	5.69	25+19.8							
	26	112.94	107.22	5.72								
	28	112.52	107.07	5.45	28+27.5							
	30	112.64	106.99	5.65	30+89.5							

8900 (6317) St. Francis - 6-16-83 - Lester Underhill - 118+44.4 S (114.05-117+00.4)

C 72911-527 N. St. Francis - 7-12-79 (Tap 113+15)

- #582-516 N. Emporia - 7-11-27 - Lowhead
- #309 - Tap - 514 E. Central - 3-29-28-50-5-10-73 - Al Henning
- #252 - Tap - 514 E. Central - 8-20-28
- #319 - Private line - 500 N. Emporia - 4-7-30 - E.L. Stewart
- #4941 - 7-32 - Moore-Robertson
- #261 - Private line - 616 N. Emporia - 10-31-35 - C.E. Hufford
- #328 - Tap - 412 E. First - 10-13-41 - Chester Davidson
- #262 - Tap - 602 N. Emporia - 2-25-43 - Chester Davidson
- #2789 - Tap - 516 N. Emporia - 3-8-46 - Dunaway Pibg.
- #2790 - Tap - 516 N. Emporia - 3-8-46 - Dunaway Pibg.
- #190 - Tap - 522 N. Emporia - 6-10-47 - Davidson Pibg.
- #15286 - Seal off - 614 N. Emporia - 7-12-62

- #16837 - 508-510 E. Central - Seal off - K. Lippoldt - 3-25-63
- #B-731-535 N. Emporia - Seal off - Al Henning - 1-24-64
- C35453-531 N. St. Francis - Seal off - Al Henning - 10-18-70
- C43999 - 537 N. St. Francis - Seal off - Al Henning - 3-18-74
- J.C. 59713 - 615 N. St. Francis - Ches. Underhill (S) - 2-1-77 (116+10.0)
- Sonic 63125 - 529 N. St. Francis - K.M. Turley - 9-20-77 (112+17.0)