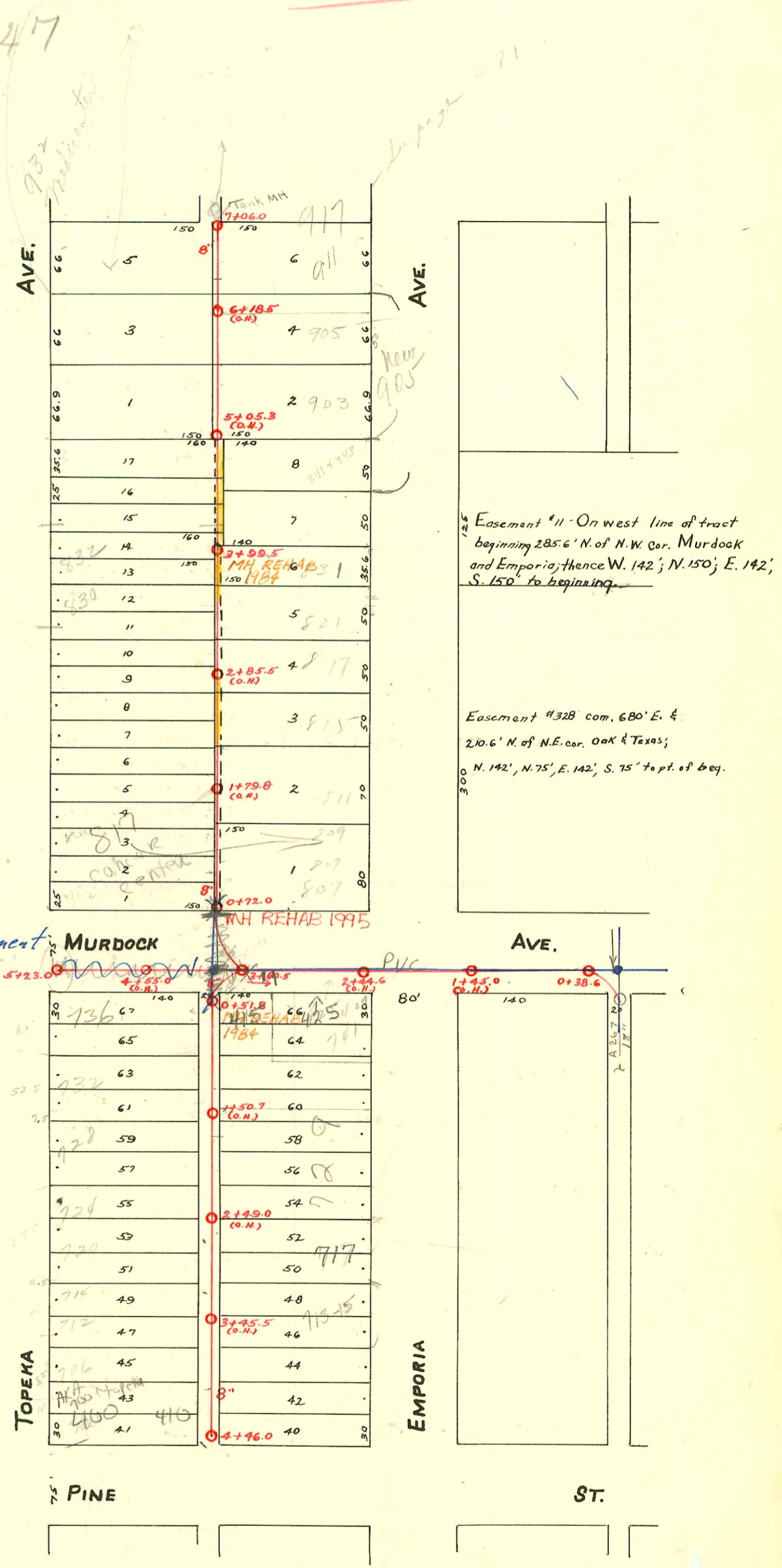


WEST SUB-MAIN "C" ON OAK ST. AND LAT'S NORTH & SOUTH
S.S.No. 1-1889

TRAP AREA

Plot 9-47



Murdock Sanitary Sewer Replacement
from WICHITA to Wabash
468-B2707 OCA # 621763

NR
 SWR 2000-00750 3-17-06 825 N Emporia Cir "viachrosti cybrenit" 4" Predco by CHU
 Tap @ 90's sgmll (1) Tcb (2) 22H (1) 45V (1) 22V (4) 45V, Tap
 SWR 2000-00551 7-5-00 817 N Emporia N/C - TRI-STATE - 150' N of MH 0700 (IN MURDOCK ST)
 1V23, 1TW1W CLEANOUT
 SWR 2002-01694 6/18/02 400 E Pine (AKA 700 N Topeka) Central Air Cond: slo 5' N of MH (4+41)
 2002-00921 410 E Pine 41262 Central Air Condit - slo ok - at alley

