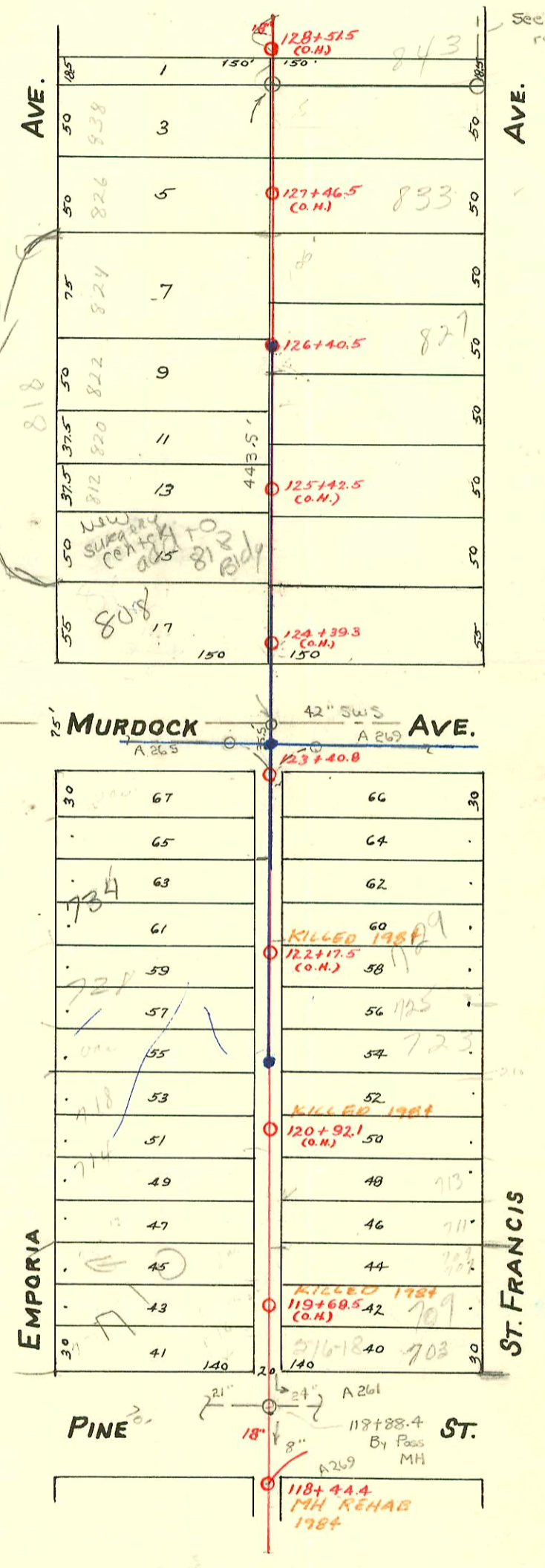


MAIN "C" FROM PINE ST. TO S. LINE OF BURLEIGH'S SECOND ADD.  
S.S. No. 1 - 1889

Plat 9-49

TRAP AREA

St. Francis Hospital



Murdock Sanitary Sewer Replacement  
from ~~to~~ at St. Francis Hospital  
468-82707 OCA # 621854

95-2900-7-7 3-7-95 808 N Emporia<sup>510</sup> - Sloin clo at TRAP

CONSTRUCTION RECORD

SERVICE RECORD

STATION	ELEVATION		Depth	MANHOLE	4-INCH "Y" BRANCHES		No. of Permit		House Number		DATE OF PERMITS	
	Ground	Grade			North West	South East	North West	South East	North West	South East	North West	South East
				128+51.8(O.H.)								
128	113.89	108.00	5.89	128+43.7 128+17.5 127+93.0 127+67.0 127+42.5	128+45.7 128+19.5 127+95.0 127+69.0 127+44.5	#116 C-27701 Seal off C-27702 Seal off	15309 Seal off 840 N. Emporia 836-838 Emporia 835 N. Emporia 833 N. Emporia	843 N. St. Francis	7-9-07	3-16-62 2-1-00		
127	114.77	107.90	6.87	127+16.3 126+92.0 126+66.0 126+43.5	127+18.3 126+94.0 126+68.0 126+45.5	#64 C-27703 Seal off C-27704 Seal off	870 Seal off 1062 Seal off 1129 Seal off 1160 Seal off	831 N. St. Francis 827 N. St. Francis 824 N. St. Francis	7-25-06 3-8-77 2-10-10	11-17-66 7-18-23 8-3-23		
126	113.89	107.80	6.09	126+40.5	126+17.5 125+93.0 125+61.8 125+44.5	126+19.5 125+95.0 125+63.8 125+46.5	#553 #1632 C49574	60248 Seal off 817 N. St. Francis 820 N. Emporia	5-20-75	9-2-09 12-2-48		
125	114.25	107.70	6.55	125+16.5 124+91.0 124+66.2 124+41.4	125+18.5 124+93.0 124+68.2 124+43.4	#142 #135 #2073 C49575	504228 Seal off 4682 Seal off 115 Seal off 806 N. Emporia 508 E. Emporia	812 N. Emporia 805 N. St. Francis 808 N. Emporia 528 E. Emporia	11-15-73 7-1-08 12-23-70 11-17-21 3-2-49	10-1-74 7-19-22 5-20-75		
124	114.00	107.60	6.40	123+40.8	123+13.5 122+81.4 122+52.2 122+20.0	123+15.5 122+83.4 122+54.2 122+22.0	#1226 #572 #3828 #227	734 N. Emporia 517 E. Emporia	4-1-03 10-18-48	2-24-91 7-1-26 11-1-06		
123	114.39	107.50	6.89	122+90.8 121+59.5 121+29.7 121+00.8	122+92.8 121+61.5 121+31.7 121+02.8	B1386 #161 #220 #550 #169	728 N. Emporia 718 N. Emporia	10-20-65	12-15-03			
121	113.19	107.30	5.89	120+69.0 120+39.5 120+08.8 119+80.8	120+71.0 120+41.5 120+10.8 119+82.8	#1799 #11531 #288 #1151 #5515 #127 #403 #253 #731	715 N. St. Francis 714 N. Emporia 713 N. St. Francis 710-12 N. Emporia 709 N. St. Francis 707 N. St. Francis	12-11-93 7-31-17 5-31-06 6-16-00 3-17-02 3-23-66 1-16-59 6-15-17 3-27-66 10-4-17				
120	113.14	107.20	5.94	119+50.4 119+20.0	119+52.4 119+22.0	#119 #731	707-709 N. St. Francis	3-23-66				
119	112.01	107.10	4.91	118+44.4								
118												

90 # 28577 (52+29 E. Murdock) Henning 1-8-90 (sealed 82' S. of MH 123+40.8)  
 10233 (731 N. St. Francis) 5-7-86 - al Henning - (123+40.8) (6 1/2' N. of SPL + 22' from Rear Prop. Line)

90 10091 (723 N. St. Francis) Henning 2-1-84 (sealed off from rear yard line to the north 14.5' E. from 10+3'S of 12 PL)  
 90 10092 (919 N. St. Francis) Henning 2-1-84 (6' S. of H + 5' from 11111)

90 # 4146 (514 E. Pine) (700 N. Emporia) Henning 2-25-81 #84444

C74521-8087N Emporia - N.C. 9-26-79 (126+66.5)  
 C60249-822 N. Emporia - Seal off 3-8-77 - al Henning (126+66.5)

#1500 - Private line - 707 N. St. Francis - 4-11-44 - Cherry Pkg. Co. 3-17-88 # 20294 - 710 N. EMPORIA above in (New LHM) 119+53.4 TAP  
 #6380 - Tap - 719 N. St. Francis - 11-3-51 - H. P. Dunaway  
 #109 - Tap - 703 N. St. Francis - 2-11-54 - Kendall Pkg. Trailer  
 10215 6" Tap 516-18 E. Pine Collier 5-1-59 118+92.9 # 14341 7-26-85 (Henning) 725 N. St. Francis - sealed 15' N. of SPL and 1' from eye  
 B4295 - Seal off - 728 N. Emporia - Turkey - 10-7-65 #92-01049 = 710 N. Emporia - 7/9/82 moved cleanout out - 105' for building extension - 4" SCH40 PVC  
 #91-00030-7 1-3-72 808 N. Emporia - N.C. - McCullough