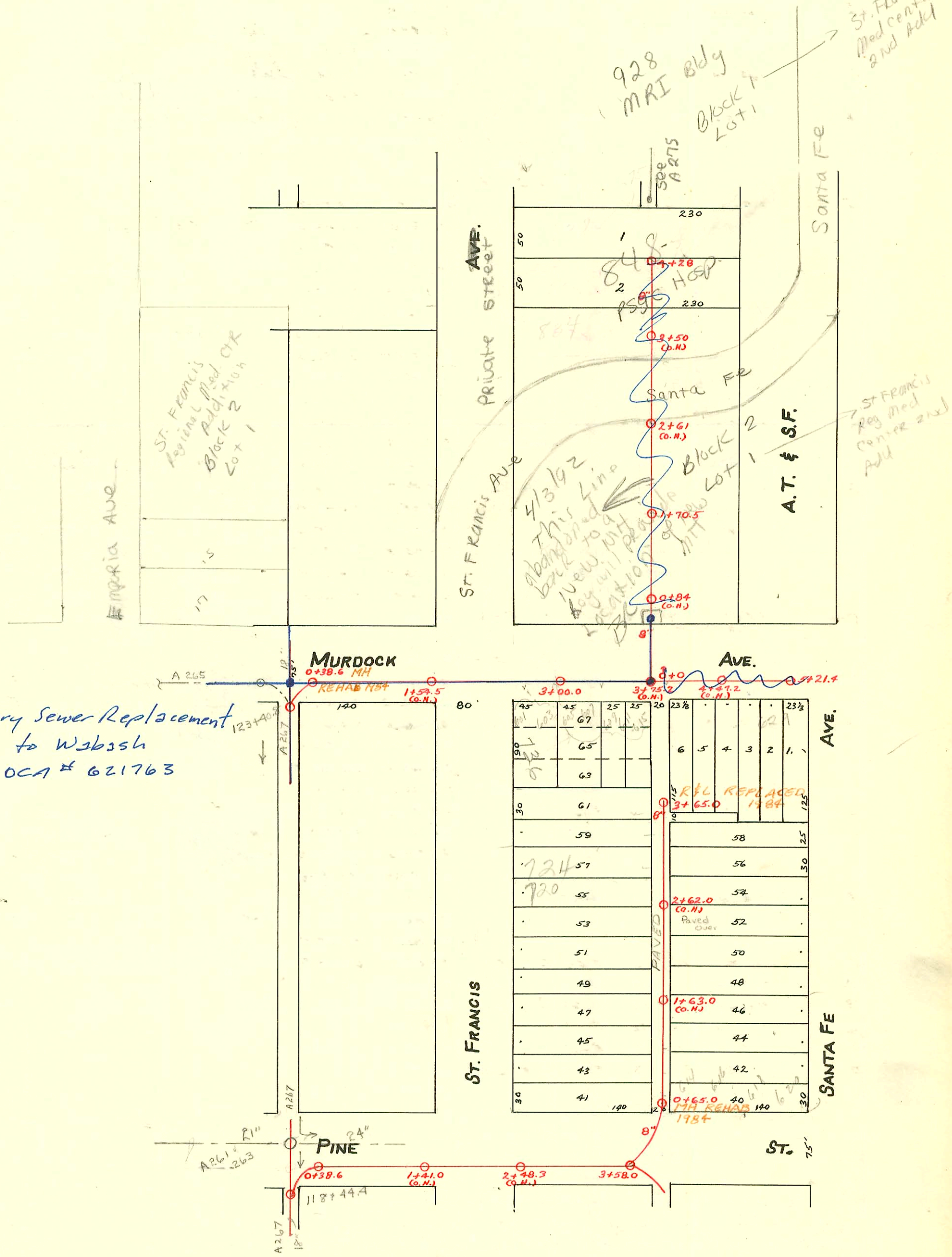


EAST SUB-MAIN "C" ON PINE ST. AND LAT. NORTH
EAST SUB-MAIN "C" ON OAK ST.-ALSO
LAT. NORTH FROM MURDOCK.
S. S. No. 1-1889

Plat 9-49

TRAP AREA

Murdock Sanitary Sewer Replacement
from Wichita to Wash
468-82707 OCA # 621763



625 806-828 N. St. Francis 6-26-80 ac. Verming
 # 626 820-826 N. St. Francis 6-26-80 ac. Verming
 # 627 828 N. St. Francis 6-26-80 ac. Verming

| CONSTRUCTION RECORD | | | | | | SERVICE RECORD | | | | | | |
|-------------------------|-----------|--------|-------|---------------|----------------------------|----------------|--------------------------------|------------------|--|------------------------------|---|---------------------|
| STATION | ELEVATION | | Depth | MANHOLE | 4-INCH "Y" BRANCHES | | No. of Permit | | House Number | | DATE OF PERMITS | |
| | Ground | Grade | | | North West | South East | North West | South East | North West | South East | North West | South East |
| LAT. No. FROM MURDOCK / | 0 | 108.84 | | 0+84 (O.H.) | | | #53629 #1619 | | 816 N. St. Francis | | 4-29-76 11-28-22 | |
| | 1 | 109.04 | | 1+70.5 | 1+55 | 1+84.5 | | | | | | |
| | 2 | 109.44 | | | 2+35.0 | 2+56.0 | | | | | | |
| | 3 | 109.84 | | | 2+87.5 3+40.0 3+35.5 | 2+81 3+33 | #879 #572 #54940 #621 | | 818 N. St. Francis 816 N. St. Francis 834 N. St. Francis | | 11-16-11 9-16-13 1-13-66 7-11-11 | |
| | 4 | 110.20 | | | 3+89.3 4+85 | 3+81 | #5829 #4939 | | 816 N. St. Francis 836 N. St. Francis | | 6-17-66 1-13-66 | |
| | | | | 4+28.0 (O.H.) | | | | | | | | |
| | | | | 5+21.4 | | | | | | | | |
| | 5 | 114.04 | 4.99 | | 5+114 | 5+134 | #771 | 19440 #197 | 630 E. Murdock | 629 E. Murdock | See below 9-10-26 | 10-29-87 3-23-21 |
| | | | | | 4+87.0 | 4+89.0 | | | | | | |
| | | | | | 4+61.7 | 4+63.7 | | | | | | |
| | | | | | 4+37.4 | 4+39.4 | | | | | | |
| | 4 | 114.20 | 5.55 | | 4+12.4 | 4+14.4 | | | | 617 Murdock | | 1-17-85 9-20-07 |
| | | | | | 3+88.2 | 3+90.2 | | #7 | | | | |
| | | | | | | 3+48.2 | | #1325 | | | | 10-10-22 |
| | | | | | 3+64.0 | 3+66.0 | | | | | | |
| | | | | | 3+39.6 | 3+41.6 | | | | | | |
| | | | | | 3+15.0 | 3+17.0 | | | | | | |
| | 3 | 114.45 | 6.20 | 3+00.0 | 3+11.2 | | | 12954 | | 736 N. St. Francis | | 1-17-85 9-24-98 |
| | | | | | 2+90.0 | 2+92.0 | | | | | | 9-24-98 |
| | | | | | 2+65.0 | 2+67.0 | | #12953 #17179 | | Lot 3 No. Murdock Drug Store | | 1-17-85 9-20-91 |
| | 2 | 114.41 | 6.41 | | 2+41.0 | 2+43.0 | | | | | | |
| | | | | | 1+42.8 | 1+44.8 | | | | | | |
| | 1 | 113.87 | 6.12 | | 1+18.0 | 1+20.0 | | | | | | |
| | | | | | 0+92.5 | 0+94.5 | | | | | | |
| | | | | | 0+68.0 | 0+70.0 | | | | | | |
| | 0 | 114.11 | 6.52 | 0+38.6 | 0+43.4 | 0+45.4 | | | | | | |
| | | | | 3+65.0 | | | | | | | | |
| | | | | | 3+60.0 | 3+62.0 | #4519 #480 | | 728 N. St. Francis | | 83-61 11-29-02 | |
| | 3 | 115.25 | 4.38 | | 3+40.0 | 3+42.0 | #549 #1076 | | 724 N. St. Francis | | 5-23-22 3-25-60 7-77-19 | |
| | | | | | 2+92.0 | 2+94.0 | | | | | | |
| | | | | | 2+66.5 | 2+68.5 | 15082 Sealoff | | 730 N. St. Francis | | 1-5-62 | |
| | | | | | 2+42.0 | 2+44.0 | | | | | | |
| | 2 | 114.58 | 4.61 | | 2+17.2 | 2+19.2 | | #340 | 713 N. Santa Fe | | 9-20-29 | |
| | | | | | 1+92.7 | 1+94.7 | #5274 #474 | | 714 N. St. Francis | | 7-18-57 9-13-01 | |
| | | | | | 1+68.0 | 1+70.0 | | | | | | |
| | | | | | 1+43.0 | 1+45.0 | | | | | | |
| | 1 | 113.64 | 4.57 | | 1+18.5 | 1+20.5 | | #147 | 707 N. St. Francis | NO RECORD | 7-13-05 | |
| | | | | | 1+08 | | #445 #863 | | 700 N. St. Francis | | 7-2-17 11-24-17 | |
| | 0 | 113.18 | 4.42 | 0+65.0 | 0+68.7 | 0+70.7 | | | | | | |
| | 3 | 112.83 | 4.66 | 3+58.0 | | | | | | | | |
| | 2 | 113.22 | 5.52 | | | | | | | | | |
| | 1 | 112.88 | 5.48 | | | | | | | | | |
| | 0 | 112.86 | 5.64 | 0+38.6 | | | | | | | | |

12956 - (736 N. St. Francis) - 1-17-85 - At Henning - 3+65.0 (S)

9048 - (834 N. St. Francis) - 8-24-83 - at Henning - 4+28.0 S

#1689 - Tap - 614 E. Murdock - 3-1-48 - Cherry Plbg. Co.

#2810 - Used old connection - 700 N. St. Francis - 10-20-50 - Dermody Plbg. Co.

#6009 - Used old connection - 600 E. Murdock - 8-16-55 - R.K. Ray

B-4709 - Seal off 838 N. St. Francis - Kendall Plbg 12-6-65 - (See p. 275)

1029187 - 19440 (629 E. Murdock) - Henning - 6" clay tile sealed off at cleanout in sidewalk, 3' S. of curb and 27.5' W. of Utility Pole

20156 - (616 E. Reno - S.O.) - 2-23-88 (Sealed off 1' E of WR and 63' S. of NPL)