

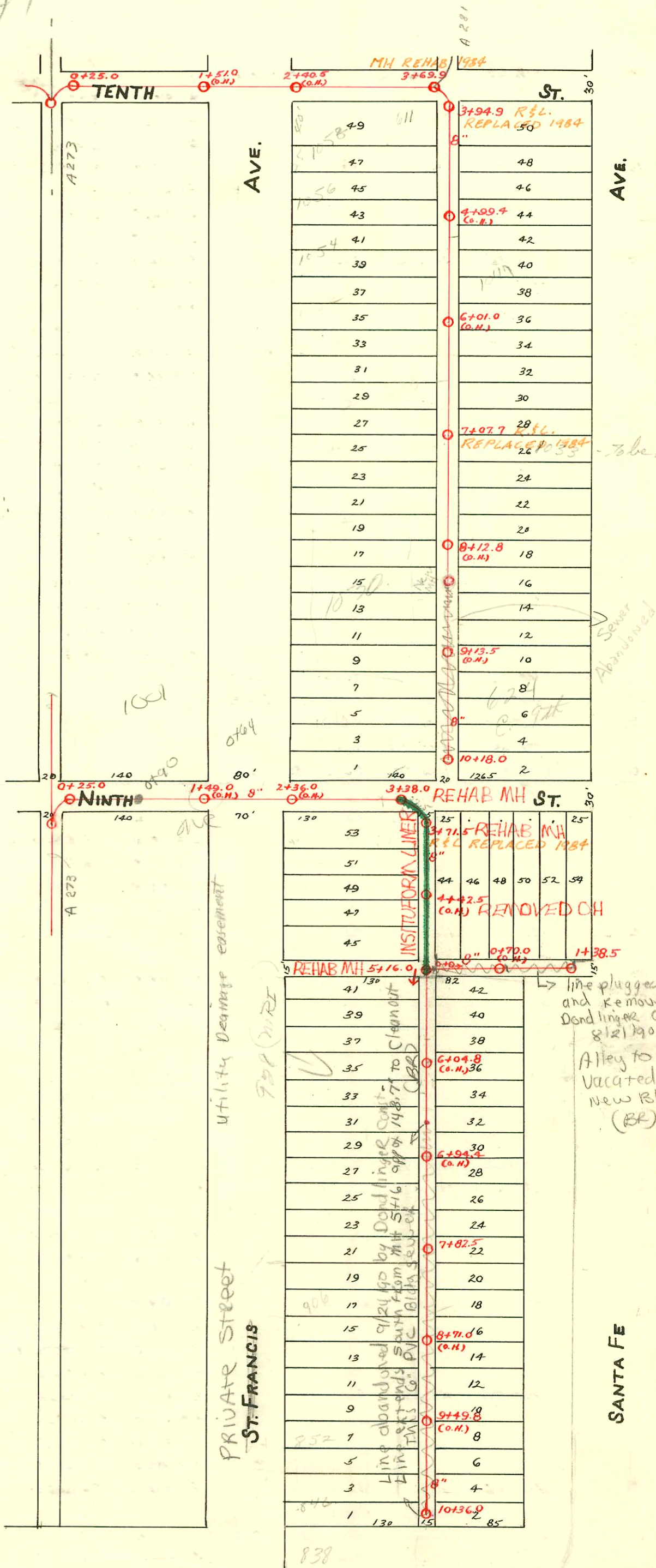
TRAP AREA

Plat 9-A4

Sub 2001-01463 do 6-13-01
 929 N ST FRANCIS (known as
 1006 N ST FRANCIS - old Laundry)
 S/O

1994 SANITARY SEWER REHABILITATION
 PROGRAM- PHASE I
 PROJ. NO. 468-82399 (623124)
 BUILT BY INSITUFORM PLAINS, INC.
 BOOKED 9-25-95 FROM AS BUILTS

See Plat Book
 9-47 FOR
 ST. FRANCIS Reg. Mod.
 CH Addition



- # 011365 - 900 N. St Francis - Sealoff - as per drawing 11-12-68 (8+61.5)
- # 13918 - 929 N. St Francis (MKT Bldg) - 5-23-85 - Known (6+35.0) (Refer to #26208 shown below)
- # 26148 - 928 N. ST. FRANCIS (MRI Bldg) - Addition to New Conn (Jury found) - 4" sewer weight cast Iron - 34' S. of N. MH (5+50)
- # 26149 - 928 N. ST FRANCIS - Dondlinger - 5' S. of MH 5+16 - Pip appx 20' of 8" main with SDR 35. (See permit 26202 below)
- # 26902 - 928 N ST FRANCIS - N.C. - Sewer for MRI Bldg now taps into MH 5+16.

CONSTRUCTION RECORD

SERVICE RECORD

STATION	ELEVATION		Depth	MANHOLE	4-INCH "Y" BRANCHES		No. of Permit		House Number		DATE OF PERMITS	
	Ground	Grade			North West	South East	North West	South East	North West	South East	North West	South East
10	115.62	112.60	3.12	10+18.0	10+15.0 9+91.0 9+67.0 9+42.3	10+13.0 9+89.0 9+65.0 9+40.3	#825 #12746 #1711	#13490 #1008	1000 N. St. Francis 1010 N. St. Francis	1001 N. Santa Fe 1003 N. Santa Fe	8-4-70 11-3-20 5-9-60	4-9-68 8-11-72 9-17-28
9	115.97	112.25	3.72		9+17.7 8+94.0 8+70.0 8+46.0	9+15.7 8+92.0 8+68.0 8+44.0	#1711 #1694 #1389	#1711 #1694 #1389	1024 S. St. Francis 1030 N. St. Francis	1025-27 N. Santa Fe 1017 N. Santa Fe	11-24-74 6-10-07 9-16-75	8-11-72 5-17-26 12-2-74 7-22-24 9-16-75
8	116.40	112.00	4.40		8+21.2 7+96.6 7+71.9 7+47.3	8+19.2 7+94.6 7+69.9 7+45.3	#435 #2185 #192	#435 #2185 #192	1028 N. St. Francis	1037 N. Santa Fe 1033 N. Santa Fe	8-11-72 7-15-09	9-25-24 2-9-25
7	115.63	111.75	3.88	7+07.7	7+22.2 6+96.7 6+71.6 6+47.0	7+20.2 6+94.7 6+69.6 6+45.0	#192 #47543 #203 #2603	#192 #47543 #203 #2603	1036 N. St. Francis 1038-40 N. St. Francis 1042 N. St. Francis	1041 N. Santa Fe	4-15-09 11-26-74 8-11-72 4-19-09	9-25-24 2-9-25 11-25-24
6	114.37	111.50	2.87		6+22.7 5+97.4 5+72.7 5+47.6	6+20.7 5+95.4 5+70.7 5+45.6	#1499 #397 #1870	#1499 #397 #1870	1050 N. St. Francis 1052 N. St. Francis	1045 N. Santa Fe	4-20-76 8-12-74 7-17-02	7-6-53 6-27-24
5	114.43	111.25	3.18		5+22.6 4+97.7 4+73.0 4+50.5 4+25.5	5+20.6 4+95.7 4+71.0 4+48.5	#1499 #1499 #1499 #933	#1499 #1499 #1499 #933	1054 N. St. Francis 615 10th St. Francis 1056-58 N. St. Francis	1057 N. Santa Fe	8-15-24 8-15-02 9-5-90 8-15-02 9-3-02	8-15-02 8-24-25
4	114.28	110.99	3.29	3+94.9	4+08.0	4+23.5	#1469	#1469	619 E. 10th		6-24-24	
3	114.42	110.92	3.50	3+69.9								
2	115.57	110.50	5.04									
1	114.60	110.25	4.35									
0	114.65	110.06	4.59	0+25.0								
				1+38.5								
1					1+35.0 1+16.0 0+91.0 0+68.4 0+46.4	1+37.0 1+18.0 0+93.0	#25991 #7707	#25991 #7707	625 9th St. Francis		8-21-90 8-5-58	
0				0+00	0+23.3							
				10+36.0								
10	113.84	111.50	2.34		10+27.2 10+02.0 9+77.0 9+52.0 9+27.3	10+29.2 10+04.0 9+79.0 9+54.0 9+29.3	#1753 #1753 #1753 #1753 #1753	#1753 #1753 #1753 #1753 #1753	846 N. St. Francis		4-5-68 1-17-91	
9	113.96	111.25	2.71		9+02.3 8+76.0 8+51.0 8+26.0	9+04.3 8+78.0 8+53.0 8+28.0	#1753 #1753 #1753 #1753	#1753 #1753 #1753 #1753	857 N. St. Francis		3-20-00	7-11-11
8	116.08	111.00	5.08	7+82.5	8+01.0 7+76.0 7+51.0 7+26.0	8+03.0 7+78.0 7+53.0 7+28.0	#1753 #1753 #1753 #1753	#1753 #1753 #1753 #1753	906 N. St. Francis		1-10-68 4-20-08	
7	115.64	110.75	4.89		7+01.0 6+76.0 6+51.0 6+25.8	7+03.0 6+78.0 6+53.0 6+27.8	#1753 #1753 #1753 #1753	#1753 #1753 #1753 #1753			11-23-01	
6	115.87	110.50	5.37		6+01.0 5+76.0 5+51.0 5+26.0	6+03.0 5+78.0 5+53.0 5+28.0	#1753 #1753 #1753 #1753	#1753 #1753 #1753 #1753			4-21-02	
5	115.39	110.25	5.14	5+16.0	5+01.0 4+76.0 4+51.0 4+26.3	5+03.0 4+78.0 4+53.0 4+28.3	#1753 #1753 #1753 #1753	#1753 #1753 #1753 #1753	910 N. St. Francis		3-11-76 8-5-54	
4	115.32	110.00	5.32		4+01.0 3+77.6	4+03.0 3+75.6	#1168	#1168	627 E. 9th		10-25-38	
3	115.23	109.85	5.38	3+38.0								
2	115.41	109.50	5.91									
1	116.11	109.25	6.86			1+09						
0	115.94	109.06	6.88	0+25.0								

#2994 - S.W. corner - 9th & Emporia - Used old conn. - 11-9-42
 #2944 - Top - 928 N. Emporia - 4-16-46 - Moore - Robertson Pibq. St. Francis Hospital
 #2606 - Top - 1047 N. Santa Fe - 11-29-49 - J. D. Lansdowne
 #5393 - Used old connection - 619 E. 10th - 7-30-51 - Davidson Pibq. Co.
 #6101 Set on 8 way 928 N. Emporia, Kendall Pibq. Co. 1-9-58
 #12729 Set on 8 way 1010 N. St. Francis Building Pibq. Co. 5-3-60 (9469) - 1-7-75 - at Henry
 #B4709 Set on 938 N. St. Francis - Kendall Pibq. Co. - 12-6-65 - (Central N. Property)
 B5829 - 866 N. St. Francis - Kendall Pibq. Co. - 6-15-66 - top
 B5780 - 864 N. St. Francis - Kendall Pibq. Co. - 6-15-66 - top - see p. 269