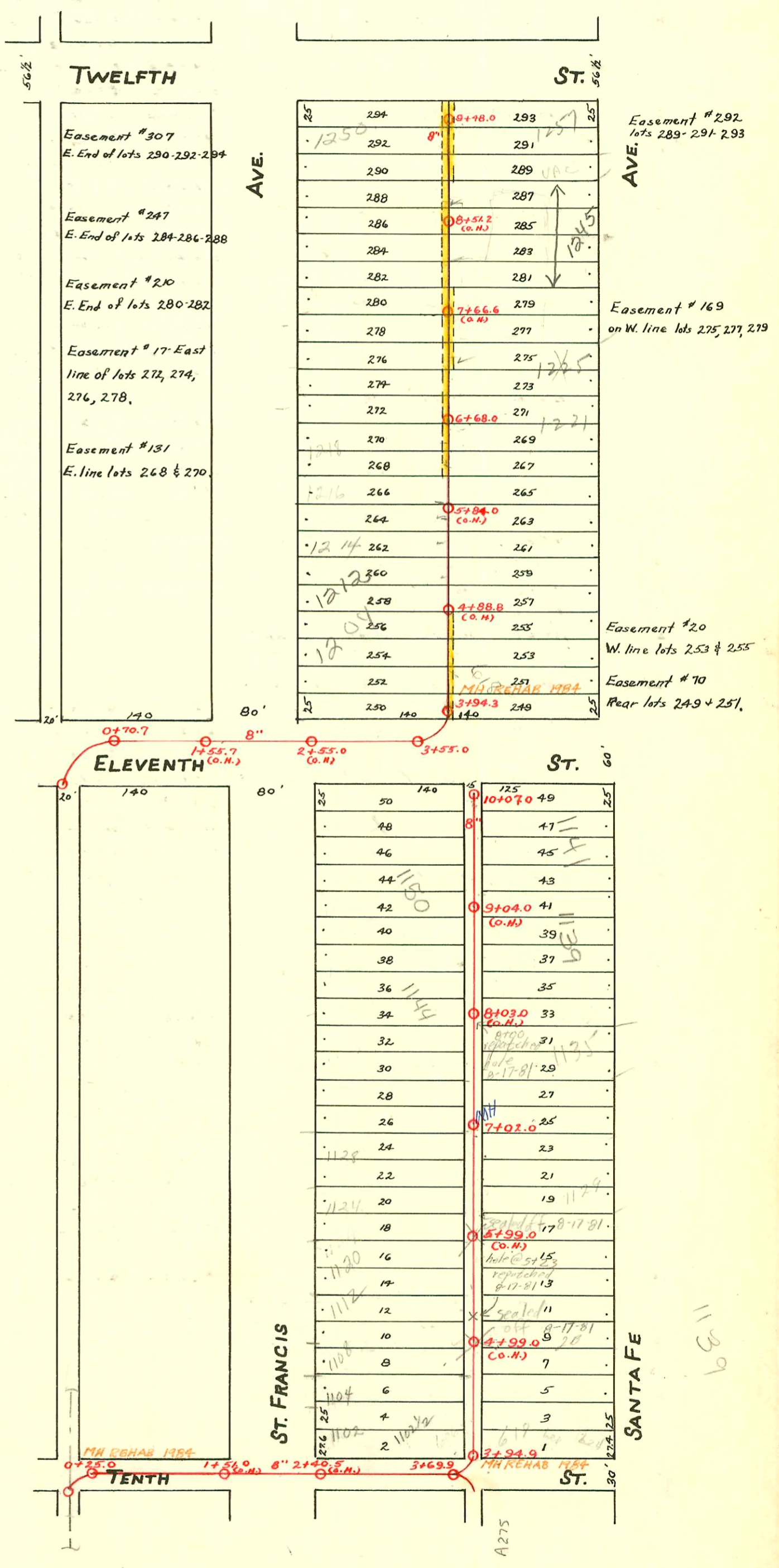


EAST SUB-MAIN "C" ON TENTH ST. AND LAT. N.  
EAST SUB-MAIN "C" ON ELEVENTH ST. AND LAT. N.  
S.S. No. 1-1889

Plat 9-44

TRAP AREA



CONSTRUCTION RECORD

SERVICE RECORD

STATION	ELEVATION		Depth	MANHOLE	4-INCH "Y" BRANCHES		No. of Permit		House Number		DATE OF PERMITS	
	Ground	Grade			North West	South East	North West	South East	North West	South East	North West	South East
	115.85	112.77	3.08	9+48.0								
9	115.69	112.65	3.04		9+45.4	9+43.4	#20	U-0320	1250 N St Francis	1248 N St Francis	3-2-08	12-19-06
					9+23.0	9+21.0	#237	#1488	1248 N St Francis	1257 N Santa Fe	5-12-15	6-25-24
					8+97.5	8+95.5			1244 N St Francis	1245 N Santa Fe		
					8+72.4	8+70.4	#88	#950	1140 N St Francis		5-4-08	9-17-48
					8+47.8	8+45.8	#166				7-23-08	
8	115.63	112.40	3.23		8+23.0	8+21.0			1244 N St Francis			
					7+98.0	7+96.0	#711				9-25-17	
					7+73.0	7+71.0	#152				7-10-08	
					7+48.3	7+46.3	#446		1241 N St Francis		4-30-28	
7	115.83	112.15	3.68		7+23.7	7+21.7		#2086	1245 N Santa Fe			8-24-56
					6+98.4	6+96.4		C74577	1245 N Santa Fe			10-2-79
				6+68.0	6+73.8	6+71.8	#1974	#12161	1230 N St Francis	1221 N Santa Fe	4-6-48	
					6+49.0	6+47.0	#315	#244	1218 N St Francis	1221 N Santa Fe	8-6-65	1-13-69
6	115.16	111.90	3.26		6+24.0	6+22.0	91-30107		1218 N St Francis		8-26-91	
					5+99.0	5+97.0	#2170	C35256	1218 N St Francis	1215 N Santa Fe	10-26-84	
					5+74.0	5+72.0	#729	#35	1216 N St Francis	1215 N Santa Fe	10-15-74	1-21-14
					5+49.4	5+47.4	#238		1214 N St Francis	1215 N Santa Fe	5-20-86	10-6-72
5	115.19	111.65	3.54		5+25.0	5+23.0	#78		1212 N St Francis	1215 N Santa Fe	3-12-01	
					4+99.4	4+97.4	#401		1204 N St Francis		12-4-46	
					4+74.4	4+72.4	#541		616 E 11th		7-5-18	
					4+50.0	4+48.0	#176	#495	1203 N St Francis		4-10-09	4-14-50
					4+25.3	4+23.3	#325	#229	1102 N St Francis	1203 N Santa Fe	6-1-10	8-24-10
3	115.14	111.38	3.76	3+94.3								3-31-21
2	115.33	111.29	4.04	3+55.0								
1	116.62	110.90	5.72									
0	115.20	110.65	4.55									
0	114.81	110.58	4.23	0+70.7								
10	115.69	112.50	3.19	10+07.0								
					9+95.0	9+93.0	#1056		1150 N St Francis		11-28-79	
					9+70.0	9+68.0					5-8-24	
					9+46.0	9+44.0	#7320	#555	1144 N St Francis	623 E 11th	9-1-04	7-8-20
9	115.60	112.25	3.35		8+18.8	8+16.8	#9		1150 N St Francis		4-7-80	
					8+94.0	8+92.0						
					8+69.2	8+67.2	#2250	#160	1136 N Santa Fe		10-3-24	
					8+44.5	8+42.5	#127	#134	1133 N Santa Fe		3-26-09	3-6-25
8	115.29	112.00	3.29		8+19.5	8+17.5	#134	#4719	1130 N Santa Fe	1141 N Santa Fe	3-29-09	4-4-53
					7+95.0	7+93.0	#4229	#1696	1126 N Santa Fe	1135 N Santa Fe	4-29-09	10-3-79
					7+70.0	7+68.0			1133 N Santa Fe		3-7-63	7-22-24
					7+45.2	7+43.2	#11		1144 N St Francis		4-7-80	10-12-71
7	115.19	111.75	3.44	7+02.0	7+20.2	7+18.2	#1747		1118 N St Francis		7-30-24	
					6+95.0	6+93.0	#1747		1128 N St Francis		11-26-74	
					6+70.0	6+68.0	#47544		1124 N St Francis			
					6+45.5	6+43.5	#664		1124 N Santa Fe		7-13-70	
6	114.82	111.50	3.32		6+20.5	6+18.5	#85		1124 N Santa Fe		3-8-74	3-11-66
					5+95.3	5+93.3	#38		1120 N Santa Fe		7-8-03	6-19-25
					5+70.7	5+68.7					3-28-07	
					5+47.0	5+45.0	#750		1112 N St Francis		11-29-09	
5	114.67	111.25	3.42		5+22.3	5+20.3	#749	#1697	1106 N St Francis		11-29-09	7-22-04
					4+97.7	4+95.7	#38				3-28-07	
					4+73.5	4+71.5	#472	#1793	1104 N St Francis	620 E 10th	4-26-74	10-20-70
					4+49.5	4+47.5			1102 N St Francis	618 E 10th	5-2-74	7-3-24
					4+25.6	4+23.6					7-30-09	4-9-47
4					4+02.0	4+00.0						
3	114.64	110.99	3.65	3+94.9								
2	114.42	110.92	3.50	3+69.9								
1	115.54	110.50	5.04									
0	114.60	110.25	4.35									
0	114.65	110.06	4.59	0+25.0								

#4091 1100-1104 N St Francis Lake Kirkland (1316 N of Mt. 5+26.5)  
 #55031 - 1146 N St Francis - 4-29-76 Henning (24th St. 10+19.9 9+22)  
 #20210-624 6-10th Sealoff - at Henning 7-22-70 (7th & n. curb to 10th + 97' E of sewer main)  
 #5378 - Top - 618 E. 11th - 7-27-51 - Kendall Pibq Co.  
 #584 - Wye - 1245 N. Santa Fe - 4-15-54 - Collison Pibq. Co.  
 #733 6on8 wye - 1117 N. Santa Fe - 5-9-56 - J.C. Sewer  
 #3372 - 6on8 wye - Bower Pibq. 12-17-56 - 1156 N. St. Francis - Trailer Connection.  
 6702 6on8 wye 1203 N Santa Fe Joe McDonald 4-21-51  
 #16357 - top - 1143 N. Santa Fe - 11-16-62 (8+19)