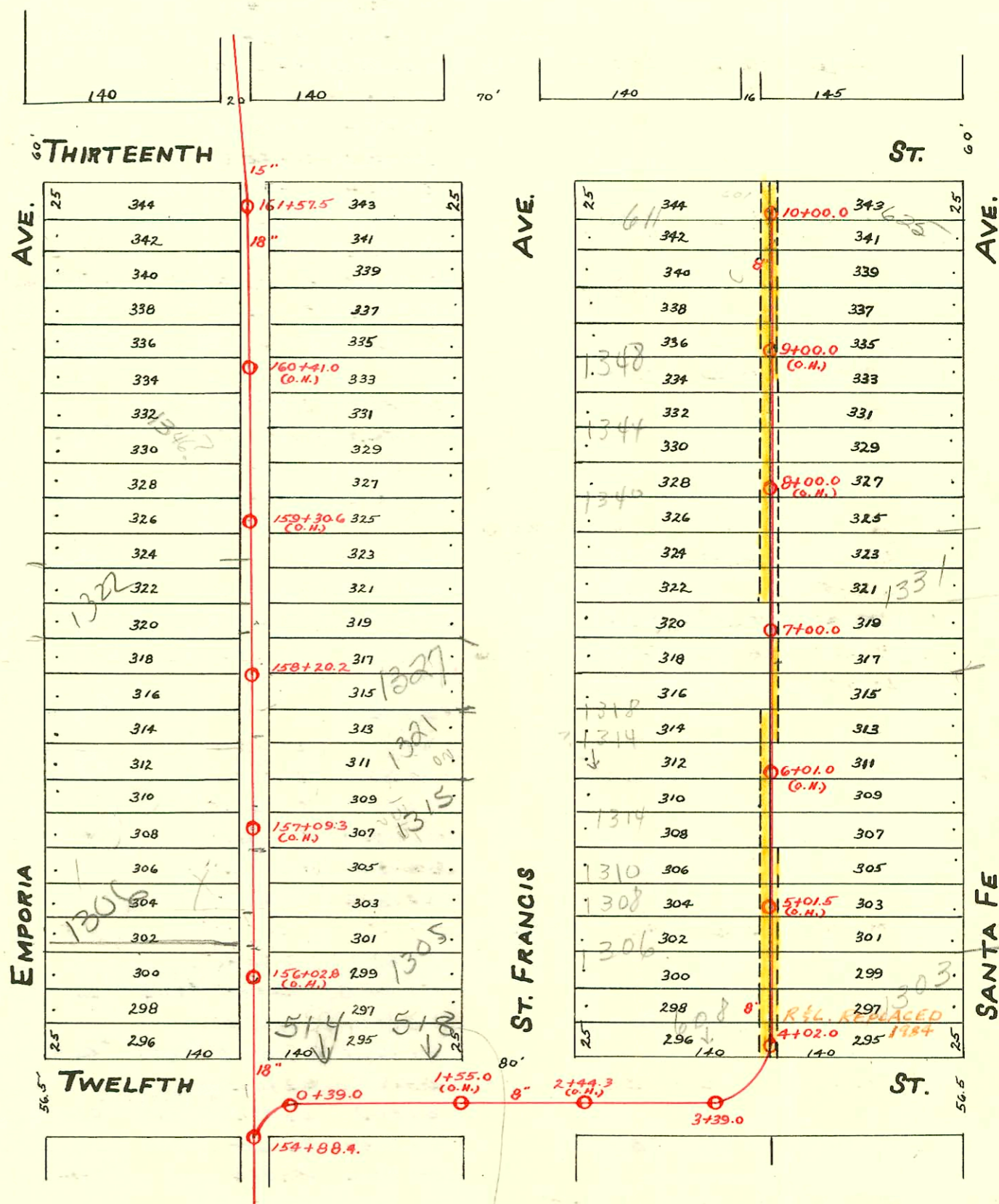


MAIN "C" FROM TWELFTH ST. TO THIRTEENTH ST.
 EAST SUB-MAIN "C" ON TWELFTH ST. AND LATERAL NORTH
 S.S. No. 1-1889

TRAP AREA

Plat 9-44



ONE LOT - ONE
 OWNER (Mennonite Housing)
 Two New Houses
 with separate sewer
 connections to city
 main.
 BR
 8/14/92

- 2003-01745 7/2/03 1306 N Emporia - Arambulas Drain + Sewer - 6" Ferroc, repair of existing co - changed broken riser
- 93-23876-7 - 9-2-93 - 1305 N^{N/C} ST FRANCIS - City tap at 156+39.2 - 181 ft south - 4" SDR 35 - 4" trap
- 93-23877-7 - 9-2-93 - 1315 N^{N/C} ST FRANCIS - City tap + 157+06.2 - 114 ft south - 4" trap - 4" SDR 35
- 92-20864-7 8/12/92 518 E. 12th - Mies Coast - (TAP 4" SDR 35 155+96.4)
- 92-20861-7 8/12/92 514 E. 12th - Mies Coast (TAP 4" SDR 35 155+88.4)

CONSTRUCTION RECORD						SERVICE RECORD						
STATION	ELEVATION		Depth	MANHOLE	4-INCH "Y" BRANCHES		No. of Permit		House Number		DATE OF PERMITS	
	Ground	Grade			North West	South East	North West	South East	North West	South East	North West	South East
10	116.48	113.50	2.98	10+00.0								
				SEWER MTN. REPLACED LINE = DID NOT Replace WYES	9+97.0	9+95.0	#108	#2591	6018. 13th	625 E. 13th	5-20-64	2-12-81
				REPAIRED FROM 9+81.5 to 9+23.0	9+80.5	9+78.5	#15329	#504	1356 N. ST. FRANCIS	623-23 5 13th	6-19-07	6-13-21
					9+56.0	9+54.0	#351				8-8-69	
					9+31.8	9+29.8					6-11-09	
9	116.77	113.25	3.52		9+06.3	9+04.3	#358		1340 N. ST. FRANCIS		6-17-10	
					8+81.4	8+79.4						
					8+56.5	8+54.5	#10	#1538	1336 N. ST. FRANCIS	1351 N. Santa Fe	1-10-15	7-3-24
					8+32.0	8+30.0						
					8+06.6	8+04.6		#1964		1341 N. Santa Fe		2-21-49
8	116.57	113.00	3.57		7+81.0	7+79.0						
					7+56.0	7+54.0						
					7+31.0	7+29.0						
7	116.20	112.75	3.45	7+00.0	7+06.0	7+04.0	#182				11-24-82	9-13-88
					6+80.6	6+78.6	#2815		1320-225 N. ST. FRANCIS		4-12-09	
					6+55.4	6+53.4					3-29-89	
					6+30.8	6+28.8	#267	#1458	1318 N. ST. FRANCIS	1333 N. Santa Fe	3-5-52	6-23-24
					6+05.0	6+03.0		#1695		1327 N. Santa Fe		7-22-24
6	116.50	112.50	4.00		5+86.0	5+80.7						
					5+55.3	5+53.3	#485	#397	1320 N. ST. FRANCIS	1321 N. Santa Fe	4-6-23	10-21-24
					5+30.8	5+28.8					7-51-79	5-12-26
					5+06.0	5+04.0	#1102		1310 N. ST. FRANCIS		12-13-46	
5	116.27	112.25	4.02		4+81.0	4+79.0	#4930	#1501	1306 N. ST. FRANCIS	1311 Santa Fe	4-23-53	6-27-24
					4+55.5	4+53.5		#1604		1301 N. Santa Fe		7-11-24
					4+28.5	4+26.5	#832	C49547	624 E. 12th	1303 N. Santa Fe	5-2-50	11-26-74
					4+06.6	4+04.6						
4	116.00	112.01	3.99	4+02.0								
3	116.49	111.85	4.64	3+39.0								
2	115.85	111.50	4.35									
1	115.93	111.25	4.68									
0	116.27	111.10	5.17	0+39.0								
	116.68	111.46	5.22	161+57.5	161+51.0	161+26.2	#60	#5072	1332 N. Santa Fe	5298 E. 13th	5-3-05	4-29-77
161	116.36	111.40	4.96		161+01.5	161+24.2	#50	#416	1353 N. Santa Fe	509 E. 13th	6-22-51	4-29-77
						160+99.5		#639	1357 N. ST. FRANCIS		4-25-03	5-17-21
					160+76.3	160+74.3	?	?			6-28-00	2-16-01
					160+51.5	160+49.5						
					160+26.8							
160	115.79	111.30	4.49		160+01.5	160+24.8		#477				8-2-09
					159+95.7	159+99.5	#754		1346 N. ST. FRANCIS	353 13th	7-20-83	
					159+76.5	159+74.5	#670	#69	1354 N. Santa Fe	1344 ST. FRANCIS	12-7-10	3-2-09
					159+52.0	159+50.0						
					159+27.0	159+25.0	#257	#654	1340 N. ST. FRANCIS	1337 N. ST. FRANCIS	6-20-16	7-29-26
159	116.10	111.20	4.90		159+02.0	159+00.0						
					158+76.8	158+74.8	#2667		1322 N. ST. FRANCIS	1325 N. ST. FRANCIS	7-15-02	2-6-46
					158+51.3	158+49.3	#247	#914	1322 N. ST. FRANCIS	1321 N. ST. FRANCIS	5-26-15	7-31-22
158	116.73	111.10	5.63	158+20.2	157+98.5	157+96.5	#46	#122	1322 N. ST. FRANCIS	1317 N. ST. FRANCIS	4-23-03	3-25-18
					157+74.0	157+72.0						
					157+49.0	157+47.0						
					157+24.2	157+22.2		#432				3-28-23
157	116.92	111.00	5.92		156+99.0	156+97.0	#729	#122	1314 N. ST. FRANCIS	1315 N. ST. FRANCIS	5-14-23	7-1-07
					156+74.8	156+72.8						
					156+50.0	156+48.0	#9	#857			1-27-03	8-19-92
					156+25.3	156+23.3	#307	#24	1306 N. ST. FRANCIS	1305 N. ST. FRANCIS	4-17-24	2-6-09
156	116.22	110.90	5.32		156+08.0						8-15-04	
											7-2-03	
					155+98.8							
					155+76.4	155+74.4	#121		1201 N. ST. FRANCIS	500 13th		7-1-07
155	116.37	110.80	5.57		155+52.0	155+50.0	#139	#17049	1301 N. ST. FRANCIS	1300 N. ST. FRANCIS	12-12-03	7-29-16
154				154+88.4								

Sta 1764 (1304 N. St. Francis) 11-7-80 - 90 N. Henning
 C69028 - (1321 N. St. Francis) Henning 10-23-78
 #1810 - Jim Hanna Pibq. Co. - Private line connection - 130 1/2 N. St. Francis - 3-19-48 # 21202 - 1333 N. St. Francis - 10-31-68 R
 #1588 - Jim Hanna Pibq. Co. - Tap 1351 N. Santa Fe - 11-23-48 # 23785 - 8/22/49 - 1327 N. St. Francis - Henning - NJC - (wye 158124.2)
 Tap - 509 E. 13th - 6-22-51 - Kendall Pibq.
 Tap - 1331 N. Santa Fe - Davidson Pibq. Co.
 Tap - Sewer Mtn = 625 E 13th - 4/26/73 (9+39.9) # 26196 - 9/25/40 - 1331 N Santa Fe - Podd, Koster - Rep - 4" PVC 40
 C38579 - Tap - 611 E 13th - 4-30-73 - St. Thompson (10+75) - wye not answered - Rep all but lower 2' of line installed 4" TRAP for mud trap.