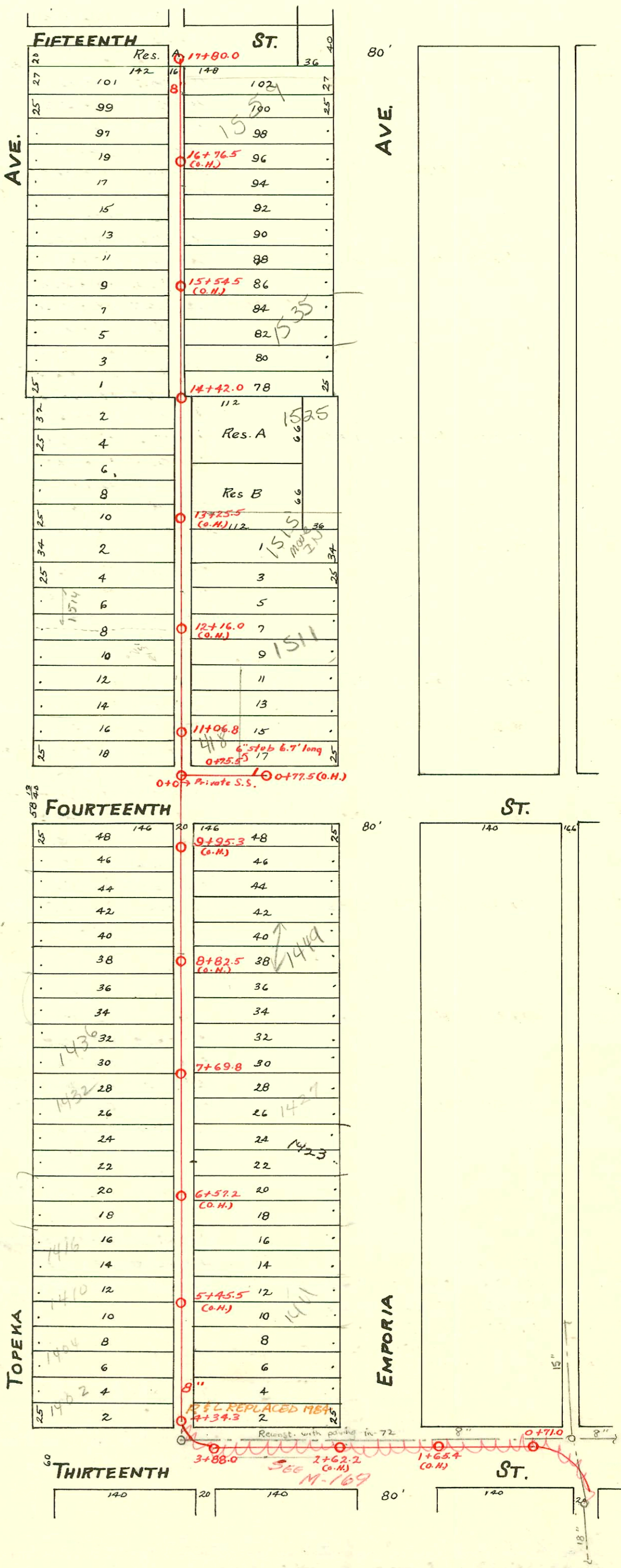


WEST SUB-MAIN "C" ON THIRTEENTH ST AND LAT. N.  
S.S.No. 1-1089

Plat 9-41

TRAP AREA



SCALE 1" = 100'

- R 2006-01368- 1525 N Emporia - 31' South of m.H. - 6" PVC trap, (1) K16 ground duplex, (4) twin c10, (3) wgs, (2) 45 H (4) 22 H - lonny wright 6/2/06
- 2002-01045- 411102- 1525 N Emporia - Northern Pipeline - Main repair ok'd by SWR maint - 2045, 2 Ferro, 6" SCH 40 PVC, Repair at main - no msmt
- R 2006-00136- 1516 N Topeka - 194' N of m.H. (1) twin c10, trap, (2) 22V - lonny wright 1-20-06
- R 2006-01367- 1529 Emporia - 17' N of m.H., trap, (1) twin c10, (3) 22H, (4) 45H, Pcdco Saddle, 6x4 bushing lonny wright 4/2/06

CONSTRUCTION RECORD

SERVICE RECORD

STATION	ELEVATION		Depth	MANHOLE	4-INCH "Y" BRANCHES		No. of Permit		House Number		DATE OF PERMITS			
	Ground	Grade			North West	South East	North West	South East	North West	South East	North West	South East	North West	South East
	120.04	116.26	3.78	17+80.0										
					17+77.0	17+75.0		#26806		1559 B		12-27-90		
					17+52.0	17+50.0		#25	421 E	Emporia		7-15-20		
17	119.72	116.06	3.66		17+29.3	17+27.3		#295	15th			5-19-09		
					17+04.8	17+02.8								
					16+81.0	16+79.0								
					16+57.0	16+55.0		#157	1540 N.	NO Record		4-18-12		
					16+33.5	16+31.5		#253	Jopoka	1537 N.	Emporia	12-11-06		
16	119.32	115.81	3.51		16+09.5	16+07.5		#230	1541 N.	Emporia		10-11-05		
					15+85.3	15+83.3		#295	1536 N.	Jopoka		4-30-13		
					15+61.0	15+59.0		#1237	1539 N.	Emporia		7-23-04		
					15+37.0	15+35.0		#225	1540 N.	Jopoka		9-22-22		
15	118.89	115.56	3.33		15+10.6	15+08.6		#476	NO Record			5-26-11		
					14+86.0	14+84.0		#506	2682	1535 N.	Emporia	6-2-11	12-26-02	
					14+42.0	14+40.0							9-26-52	
					14+38.2	14+36.2								
14	118.74	115.31	3.43		14+14.0	14+12.0		#281	1528 N.	Jopoka		7-20-04		
					13+90.0	13+86.0		#71	1524 N.	Jopoka		4-15-08		
					13+66.0	13+64.0								
					13+42.0	13+40.0		#195	1520 N.	Jopoka		3-1-04		
13	117.90	115.06	2.84		13+18.0	13+16.0		#506	NO Record			6-2-11		
					12+93.5	12+91.5								
					12+70.5	12+68.5		#222	91-34601-7	1514 N.	Emporia	5-10-15	10-19-11	
					12+46.5	12+44.5		#116	Jopoka	1515 N.	Emporia		10-4-16	
					12+22.2	12+20.2		#349	1511 B	Emporia		8-31-16		
12	118.13	114.81	3.32		11+98.0	11+96.0		#377	1512 N.	Jopoka		12-1-15		
					11+74.0	11+72.0		#769	1509 N.	Emporia		5-21-23		
					11+50.0	11+48.0		#311	7. E. cor	1500 N.	Jopoka	5-26-09	12-14-03	
					11+26.8	11+24.8		#160	Jopoka					
					11+06.8	11+04.8		#1303	4184 E.				9-4-23	
11	118.11	114.56	3.55		10+78.3	10+76.3		#190	1351 N.	Jopoka		4-4-10		
					10+10.3	10+08.3		#310	1450 N.	Jopoka		5-27-10		
					9+85.2	9+83.2		#1310	1448 N.	Jopoka	1453 N.	Emporia	6-4-24	6-15-48
					9+60.6	9+58.6		#1718	1446 N.	Jopoka		12-14-22	4-9-47	
9	118.13	114.06	4.07		9+11.7	9+09.7		#953	1449 N.	Emporia		11-20-46		
					8+86.5	8+84.5		#1719	1442 N.	Jopoka		12-14-22		
					8+62.0	8+60.0		#2443	1431 N.	Emporia		11-19-45		
8	117.31	113.81	3.50		8+38.0	8+36.0		#151	1428 N.	Jopoka		8-10-07		
					8+13.5	8+11.5								
					7+88.5	7+86.5								
					7+63.4	7+61.4		#92	1432 N.	Emporia	1427 N.	Emporia	7-9-02	2-27-11
7	117.00	113.56	3.44		7+39.0	7+37.0		#399	1422 N.	Jopoka	NO Record	7-8-10	10-9-02	
					7+14.0	7+12.0		#338	1416 N.	Jopoka	1431 N.	Emporia	4-5-73	12-26-13
					6+88.5	6+86.5		#369	1414 N.	Jopoka	1413 N.	Emporia	6-20-10	6-3-14
					6+63.5	6+61.5		#236	1404 N.	Jopoka	NO Record	9-6-74	12-2-07	
					6+39.3	6+37.3		#363	1402 N.	Jopoka		6-17-14		
6	116.90	113.31	3.59		6+14.4	6+12.4		#259	1401 N.	Jopoka		6-15-04		
					5+89.0	5+87.0								
					5+64.2	5+62.2		#784	1400 N.	Jopoka	NO Record	6-5-69	5-25-23	
5	117.06	113.06	4.00		5+39.8	5+37.8		#363	1402 N.	Jopoka		3-11-01		
					5+14.8	5+12.8		#259	1401 N.	Jopoka		3-1-86		
					4+90.0	4+88.0								
					4+64.9	4+62.9		#784	1402 N.	Jopoka		3-1-86		
4	116.82	112.90	3.92	4+34.3	4+40.1	4+38.1		#208	1401 N.	Jopoka		3-1-86		
3	116.26	112.78	3.48	3+88.0										
2	116.80	112.31	4.49											
1	116.50	112.06	4.44											
0	116.84	111.99	4.85	0+71.0										
Private S.S. in 14th St.		114.72	3.6	New M.H. 0+00	(0+75.5-6" Stub N.)	6.7' long		93-30807	4245 R			12-18-93		
		114.80	3.6											
					0+77.5 (D.H.)									

158498-418 E. 14th - see drawing - 12-15-12 (10' from 14th St. to 15th St.)  
 A-370-Tap - 1544 N. Topoka - 6-25-31 - Burqan  
 #4773-Tap - 1449 N. Emporia - 5-12-55 - Art Prosser - 5-12-55  
 #4720 - 424 26 E. 14th - Brodie Pkwy - Private line - 14th & Emporia  
 #131 - Set back 8' w/p - 415 E. 14th - da Jay Pkwy - 12-17-58 10+043  
 B-436 - Seal off 1457 N. Emporia 11-21-63 all blocking

92-7721-7 5126/2 (1411 N Emporia) - Vermorel House - 4' alley tile 13' south of NPL  
 93-2770-7 2-11-93 1436 N. TOPKA Bb SCOTT  
 6" SDR35. Replaced line from house to 25' out; pipe not uncovered; 1/4" pf shallow; Left existing trap; No alley cut; old corr under 1428 shown at wye 14.7' N of MH