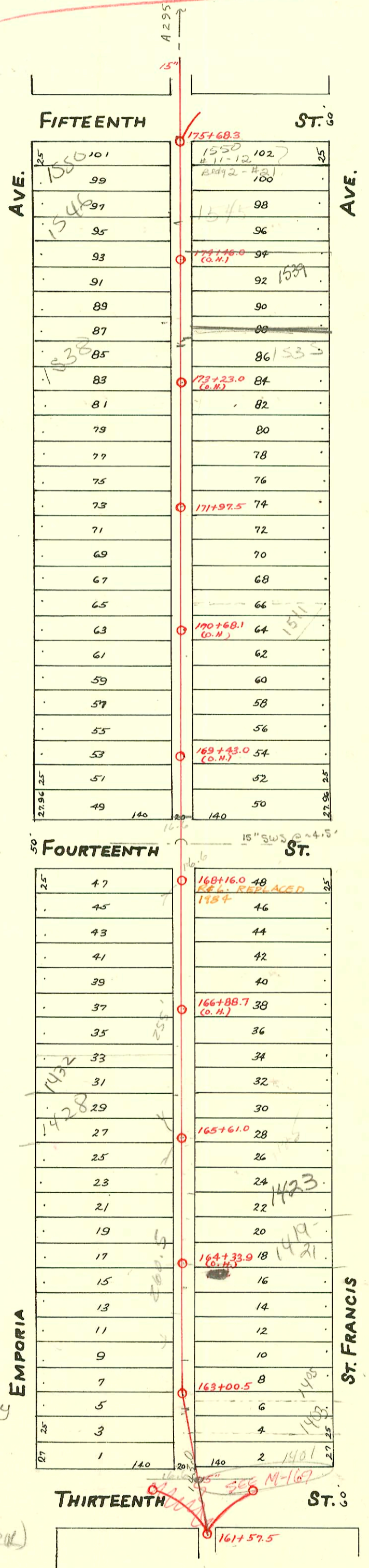


MAIN "C" FROM THIRTEENTH ST. TO FIFTEENTH ST.
S.S. No 1-1889

Plat 9-41

TRAP AREA



2003-02881-11/5/03- 1423 N ST Francis - Lonny Wright - Replace from 8' from house to alley, put in trap, (left 25' under bldg) 2-1 way CO, 1 twin CO, 3V45, 4 twin CO, 1-wye, 3H45, 1 running trap

98-4428-7 3/24/08 1419 N ST FRANCIS (CARRIAGE HOUSE IN REAR) S10 230' N of Mt

CONSTRUCTION RECORD						SERVICE RECORD						
STATION	ELEVATION		Depth	MANHOLE	4-INCH "Y" BRANCHES		No. of Permit		House Number		DATE OF PERMITS	
	Ground	Grade			North West	South East	North West	South East	North West	South East	North West	South East
				175+68.3								
					175+60.0	175+58.0	#649	#902	1550 N. Emporia	no record	10-15-09	12-4-11
175	119.16	112.80	6.36		175+35.8	175+33.8						
					175+11.3	175+09.3	#1868	#649	1534 N. St. Francis	1546 N. St. Francis	11-7-06	9-1-17
					174+86.6	174+84.6	215	#425	Emporia	1541 N. St. Francis	3-31-21	5-1-22
					174+62.6	174+60.6						
174	118.78	112.70	6.08		174+38.3	174+36.3	#1174		1537 N. St. Francis	1540 N. St. Francis	9-11-22	
					174+13.4	174+11.4	#114		Emporia	1537 N. St. Francis	3-1-21	
					173+88.4	173+86.4	#20037	#303	1542 N. Emporia	1537 N. St. Francis	2-2-88	7-21-16
					173+64.3	173+62.3	482	#1098	Emporia	1535 N. St. Francis	4-5-23	8-28-22
					173+40.0	173+38.0						
173	118.33	112.60	5.73		173+15.2	173+13.2						
					172+91.0	172+89.0						
					172+67.0	172+65.0	#1290	#27	1536 N. Emporia	1525 N. St. Francis	10-1-22	1-16-20
					172+42.6	172+40.6	#1463		1522 N. Emporia	1525 N. St. Francis	11-2-22	
172	118.48	112.50	5.98		172+18.0	172+16.0		#808	1525 N. St. Francis			11-5-17
				171+97.5								
					171+93.0	171+91.0	#877	#1243	1528 N. Emporia	1523 N. St. Francis	7-22-22	9-22-22
					171+68.6	171+66.6		#1073	1517 N. St. Francis			8-24-22
					171+44.5	171+42.5						
171	117.87	112.40	5.47		171+20.6	171+18.6	#142	#455	1538 N. Emporia	no record	2-8-24	5-18-11
					170+96.3	170+94.3						
					170+72.0	170+70.0		#1724	1511 N. St. Francis			12-18-22
					170+48.7	170+46.7		#300	1509 N. St. Francis			5-23-10
170	117.67	112.30	5.37		170+24.2	170+22.2	?				6-17-01	
					169+99.8	169+97.8		#570	no record			10-18-13
					169+75.2	169+73.2		#418	1508 N. St. Francis			7-11-18
					169+51.5	169+49.5	#325		1506 N. Emporia		1-19-09	
					169+27.6	169+25.6						
169	117.70	112.20	5.50		169+03.0	169+01.0	#259	#416	1502 N. Emporia	1501 N. St. Francis	11-9-08	7-11-18
					168+80.0	168+78.0						
168	117.31	112.10	5.21	168+16.0								
					167+97.0			#231	1442 N. Emporia		11-25-07	
					167+73.2	167+95.0						
					167+49.8	167+71.2		#149	1442 N. Emporia		8-14-05	
					167+25.7	167+47.8		#317	no record			7-1-12
167	117.07	112.00	5.07		167+01.5	167+23.7	#148	#407	1438 N. Emporia	1445 N. St. Francis	8-14-05	5-14-21
					166+99.5							
					166+77.0	166+75.0	#242	#220	1437 N. Emporia	1441 N. St. Francis	12-14-05	10-6-08
					166+53.0	166+51.0	#76	#284	1432 N. Emporia	1435 N. St. Francis	4-10-08	5-11-17
					166+28.4	166+26.4	#555		1431 N. St. Francis		8-2-21	
166	116.73	111.90	4.83		166+04.1	166+02.1	#76		1430 N. Emporia	no record	5-23-05	
					165+79.5	165+77.5		#680	no record			9-3-20
				165+61.0								
					165+54.0	165+52.0	#729	#326	1426 N. Emporia	1425 N. St. Francis	2-4-19	2-24-84
					165+30.3	165+28.3		#2003-02881	1423 N. St. Francis	R seen next pg	11-5-03	10-25-22
165	116.30	111.80	4.50		165+05.3	165+03.3		#1435				
					164+80.8	164+78.8						
					164+56.4	164+54.4	#375		1426 N. St. Francis	1421 N. St. Francis	8-3-15	
					164+32.4	164+30.4	#372		1416 N. St. Francis	1412 N. St. Francis	9-13-16	8-2-29
164	117.01	111.70	5.31	M.H. 164+33.9	164+07.7	164+05.7	#36	#415	1414 N. Emporia	1414 R. St. Francis	3-12-06	7-24-13
					163+83.5	163+81.5	#35		1410 N. Emporia		3-12-06	
					163+59.2	163+57.2						
					163+35.4	163+33.4	#55009	#297	1504 N. St. Francis		#-37-76	5-14-14
					163+11.0	163+09.0	#721		1408 N. Emporia	1405 N. St. Francis	6-30-49	
163	117.61	111.60	6.01	163+00.5								
					162+86.5	162+84.5	#589	#293	502 E. 13th	1403 E. St. Francis	8-12-47	5-19-09
					162+62.0	162+60.0		#45				1-29-10
162	116.94	111.50	5.44		162+38.2	162+36.2						
161	116.68	111.46	5.22	161+57.5								

97-12546-7 7-23-97 1546 N Emporia - Padgett EA - 4" wye for 2nd kickout - schlapoc

2003-02882 - 115103-1419N St Francis - Lonny Wright - Replace from house to within 50' of wye (did not replace trap - traps by wye) 1H45, 1H22, 1H21, 1H20, 1H19, 1H18, 1H17, 1H16, 1H15, 1H14, 1H13, 1H12, 1H11, 1H10, 1H9, 1H8, 1H7, 1H6, 1H5, 1H4, 1H3, 1H2, 1H1, 1H0, 1H-1, 1H-2, 1H-3, 1H-4, 1H-5, 1H-6, 1H-7, 1H-8, 1H-9, 1H-10, 1H-11, 1H-12, 1H-13, 1H-14, 1H-15, 1H-16, 1H-17, 1H-18, 1H-19, 1H-20, 1H-21, 1H-22, 1H-23, 1H-24, 1H-25, 1H-26, 1H-27, 1H-28, 1H-29, 1H-30, 1H-31, 1H-32, 1H-33, 1H-34, 1H-35, 1H-36, 1H-37, 1H-38, 1H-39, 1H-40, 1H-41, 1H-42, 1H-43, 1H-44, 1H-45, 1H-46, 1H-47, 1H-48, 1H-49, 1H-50, 1H-51, 1H-52, 1H-53, 1H-54, 1H-55, 1H-56, 1H-57, 1H-58, 1H-59, 1H-60, 1H-61, 1H-62, 1H-63, 1H-64, 1H-65, 1H-66, 1H-67, 1H-68, 1H-69, 1H-70, 1H-71, 1H-72, 1H-73, 1H-74, 1H-75, 1H-76, 1H-77, 1H-78, 1H-79, 1H-80, 1H-81, 1H-82, 1H-83, 1H-84, 1H-85, 1H-86, 1H-87, 1H-88, 1H-89, 1H-90, 1H-91, 1H-92, 1H-93, 1H-94, 1H-95, 1H-96, 1H-97, 1H-98, 1H-99, 1H-100, 1H-101, 1H-102, 1H-103, 1H-104, 1H-105, 1H-106, 1H-107, 1H-108, 1H-109, 1H-110, 1H-111, 1H-112, 1H-113, 1H-114, 1H-115, 1H-116, 1H-117, 1H-118, 1H-119, 1H-120, 1H-121, 1H-122, 1H-123, 1H-124, 1H-125, 1H-126, 1H-127, 1H-128, 1H-129, 1H-130, 1H-131, 1H-132, 1H-133, 1H-134, 1H-135, 1H-136, 1H-137, 1H-138, 1H-139, 1H-140, 1H-141, 1H-142, 1H-143, 1H-144, 1H-145, 1H-146, 1H-147, 1H-148, 1H-149, 1H-150, 1H-151, 1H-152, 1H-153, 1H-154, 1H-155, 1H-156, 1H-157, 1H-158, 1H-159, 1H-160, 1H-161, 1H-162, 1H-163, 1H-164, 1H-165, 1H-166, 1H-167, 1H-168, 1H-169, 1H-170, 1H-171, 1H-172, 1H-173, 1H-174, 1H-175, 1H-176, 1H-177, 1H-178, 1H-179, 1H-180, 1H-181, 1H-182, 1H-183, 1H-184, 1H-185, 1H-186, 1H-187, 1H-188, 1H-189, 1H-190, 1H-191, 1H-192, 1H-193, 1H-194, 1H-195, 1H-196, 1H-197, 1H-198, 1H-199, 1H-200, 1H-201, 1H-202, 1H-203, 1H-204, 1H-205, 1H-206, 1H-207, 1H-208, 1H-209, 1H-210, 1H-211, 1H-212, 1H-213, 1H-214, 1H-215, 1H-216, 1H-217, 1H-218, 1H-219, 1H-220, 1H-221, 1H-222, 1H-223, 1H-224, 1H-225, 1H-226, 1H-227, 1H-228, 1H-229, 1H-230, 1H-231, 1H-232, 1H-233, 1H-234, 1H-235, 1H-236, 1H-237, 1H-238, 1H-239, 1H-240, 1H-241, 1H-242, 1H-243, 1H-244, 1H-245, 1H-246, 1H-247, 1H-248, 1H-249, 1H-250, 1H-251, 1H-252, 1H-253, 1H-254, 1H-255, 1H-256, 1H-257, 1H-258, 1H-259, 1H-260, 1H-261, 1H-262, 1H-263, 1H-264, 1H-265, 1H-266, 1H-267, 1H-268, 1H-269, 1H-270, 1H-271, 1H-272, 1H-273, 1H-274, 1H-275, 1H-276, 1H-277, 1H-278, 1H-279, 1H-280, 1H-281, 1H-282, 1H-283, 1H-284, 1H-285, 1H-286, 1H-287, 1H-288, 1H-289, 1H-290, 1H-291, 1H-292, 1H-293, 1H-294, 1H-295, 1H-296, 1H-297, 1H-298, 1H-299, 1H-300, 1H-301, 1H-302, 1H-303, 1H-304, 1H-305, 1H-306, 1H-307, 1H-308, 1H-309, 1H-310, 1H-311, 1H-312, 1H-313, 1H-314, 1H-315, 1H-316, 1H-317, 1H-318, 1H-319, 1H-320, 1H-321, 1H-322, 1H-323, 1H-324, 1H-325, 1H-326, 1H-327, 1H-328, 1H-329, 1H-330, 1H-331, 1H-332, 1H-333, 1H-334, 1H-335, 1H-336, 1H-337, 1H-338, 1H-339, 1H-340, 1H-341, 1H-342, 1H-343, 1H-344, 1H-345, 1H-346, 1H-347, 1H-348, 1H-349, 1H-350, 1H-351, 1H-352, 1H-353, 1H-354, 1H-355, 1H-356, 1H-357, 1H-358, 1H-359, 1H-360, 1H-361, 1H-362, 1H-363, 1H-364, 1H-365, 1H-366, 1H-367, 1H-368, 1H-369, 1H-370, 1H-371, 1H-372, 1H-373, 1H-374, 1H-375, 1H-376, 1H-377, 1H-378, 1H-379, 1H-380, 1H-381, 1H-382, 1H-383, 1H-384, 1H-385, 1H-386, 1H-387, 1H-388, 1H-389, 1H-390, 1H-391, 1H-392, 1H-393, 1H-394, 1H-395, 1H-396, 1H-397, 1H-398, 1H-399, 1H-400, 1H-401, 1H-402, 1H-403, 1H-404, 1H-405, 1H-406, 1H-407, 1H-408, 1H-409, 1H-410, 1H-411, 1H-412, 1H-413, 1H-414, 1H-415, 1H-416, 1H-417, 1H-418, 1H-419, 1H-420, 1H-421, 1H-422, 1H-423, 1H-424, 1H-425, 1H-426, 1H-427, 1H-428, 1H-429, 1H-430, 1H-431, 1H-432, 1H-433, 1H-434, 1H-435, 1H-436, 1H-437, 1H-438, 1H-439, 1H-440, 1H-441, 1H-442, 1H-443, 1H-444, 1H-445, 1H-446, 1H-447, 1H-448, 1H-449, 1H-450, 1H-451, 1H-452, 1H-453, 1H-454, 1H-455, 1H-456, 1H-457, 1H-458, 1H-459, 1H-460, 1H-461, 1H-462, 1H-463, 1H-464, 1H-465, 1H-466, 1H-467, 1H-468, 1H-469, 1H-470, 1H-471, 1H-472, 1H-473, 1H-474, 1H-475, 1H-476, 1H-477, 1H-478, 1H-479, 1H-480, 1H-481, 1H-482, 1H-483, 1H-484, 1H-485, 1H-486, 1H-487, 1H-488, 1H-489, 1H-490, 1H-491, 1H-492, 1H-493, 1H-494, 1H-495, 1H-496, 1H-497, 1H-498, 1H-499, 1H-500, 1H-501, 1H-502, 1H-503, 1H-504, 1H-505, 1H-506, 1H-507, 1H-508, 1H-509, 1H-510, 1H-511, 1H-512, 1H-513, 1H-514, 1H-515, 1H-516, 1H-517, 1H-518, 1H-519, 1H-520, 1H-521, 1H-522, 1H-523, 1H-524, 1H-525, 1H-526, 1H-527, 1H-528, 1H-529, 1H-530, 1H-531, 1H-532, 1H-533, 1H-534, 1H-535, 1H-536, 1H-537, 1H-538, 1H-539, 1H-540, 1H-541, 1H-542, 1H-543, 1H-544, 1H-545, 1H-546, 1H-547, 1H-548, 1H-549, 1H-550, 1H-551, 1H-552, 1H-553, 1H-554, 1H-555, 1H-556, 1H-557, 1H-558, 1H-559, 1H-560, 1H-561, 1H-562, 1H-563, 1H-564, 1H-565, 1H-566, 1H-567, 1H-568, 1H-569, 1H-570, 1H-571, 1H-572, 1H-573, 1H-574, 1H-575, 1H-576, 1H-577, 1H-578, 1H-579, 1H-580, 1H-581, 1H-582, 1H-583, 1H-584, 1H-585, 1H-586, 1H-587, 1H-588, 1H-589, 1H-590, 1H-591, 1H-592, 1H-593, 1H-594, 1H-595, 1H-596, 1H-597, 1H-598, 1H-599, 1H-600, 1H-601, 1H-602, 1H-603, 1H-604, 1H-605, 1H-606, 1H-607, 1H-608, 1H-609, 1H-610, 1H-611, 1H-612, 1H-613, 1H-614, 1H-615, 1H-616, 1H-617, 1H-618, 1H-619, 1H-620, 1H-621, 1H-622