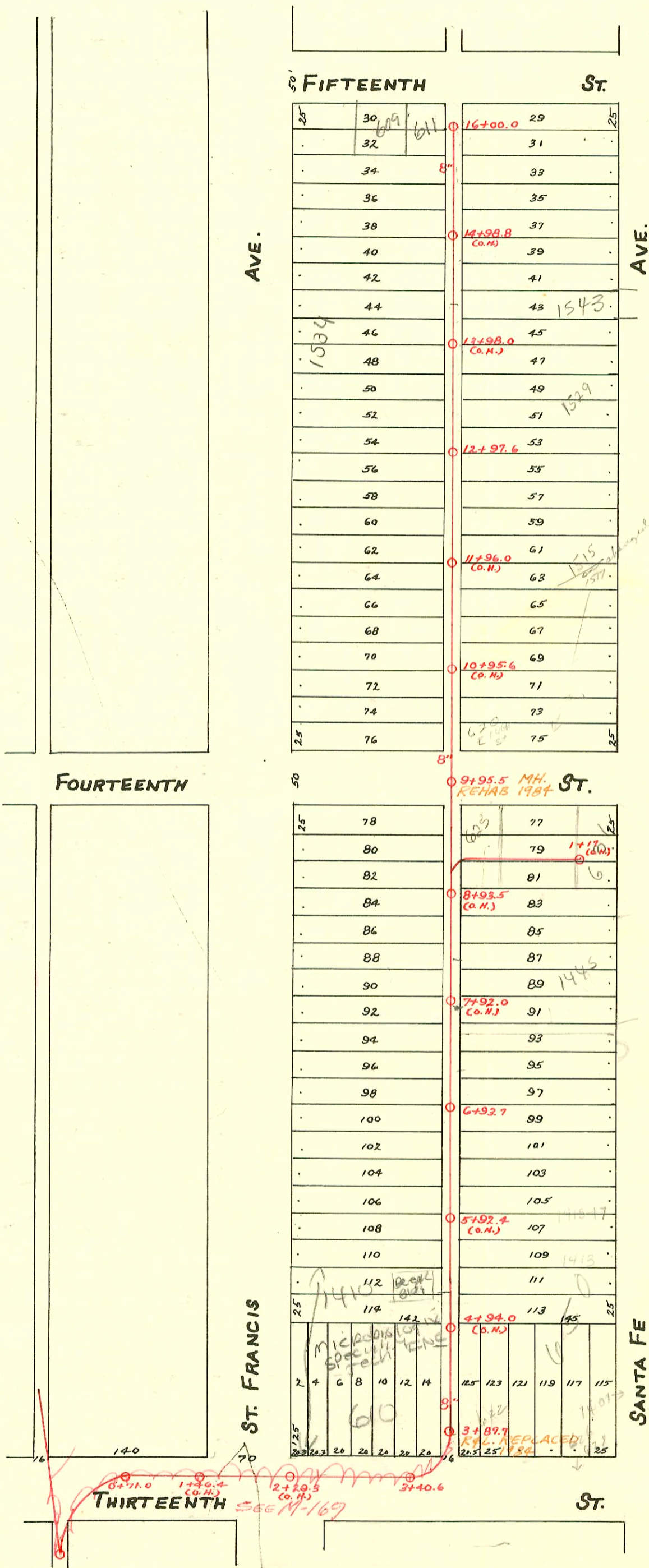


EAST SUB-MAIN "C" ON THIRTEENTH ST. AND LAT. N.
S. S. No. 1-1889

Plat 9-41

TRAP AREA



See 2003-01643 62363 1441 N Santa Fe (pole bank with roughin ply only) Betzer trench:
4" PVC - 110' N of MH 6+93.7 (8+03.7) Predco by city - 1H22, 1V22, 1 Running trap (4v45) (17x100)

CONSTRUCTION RECORD

SERVICE RECORD

STATION	ELEVATION		Depth	MANHOLE	4-INCH "Y" BRANCHES		No. of Permit		House Number		DATE OF PERMITS	
	Ground	Grade			North West	South East	North West	South East	North West	South East	North West	South East
<i>(Flush tank #16+00 is 94.5' N. of O.H. 14+98.0)</i>												
16	118.18	115.66	2.52	16+00.0	15+97.5 15+79.0 15+54.3 15+30.0	15+95.5 15+77.0 15+52.3 15+28.0	#2000-03639 #864 #43915 #488	C29316 #502 #1046	611 P 609 E. 1572 1572 N. S. 1536 N. S. St. Francis	617 E. 1572 609 E. 1572 615 E. 15th (assumed 7' below)	12-1-00 5-13-38 1-29-74 8-5-09	12-6-71 8-11-09 7-3-19
15	117.70	115.41	2.29		15+05.5 14+80.4 14+55.4 14+31.5	15+03.5 14+78.4 14+53.4 14+29.5	#348 #516	#2552 #803	1542 N. St. Francis 1536 N. St. Francis	1545 N. S. Santa Fe	5-13-26 6-19-26	2-10-89 12-8-23
14	117.23	115.16	2.07		14+06.7 13+82.0 13+57.0 13+32.6	14+04.7 13+80.0 13+55.0 13+30.6	#1326 #872 #861		1334 N. St. Francis 1547 N. Santa Fe 1542 N. Santa Fe		10-10-22	4-18-24 4-17-24
13	117.46	114.94	2.52	12+97.6	13+08.0 12+82.7 12+57.7 12+33.4	13+06.0 12+80.7 12+55.7 12+31.4	#420 #112 #423	#860	1544 N. St. Francis 1522 N. St. Francis 1516 N. St. Francis	1529 N. Santa Fe	6-13-22 4-29-22	4-17-24 5-20-48 5-1-22
12	117.20	114.66	2.54		12+08.8 11+84.0 11+59.3 11+35.3	12+06.8 11+82.0 11+57.3 11+33.3	#826 #827	#28333 #1874	1514 N. St. Francis 1512 N. St. Francis	1515 N. Santa Fe	9-28-26	9-30-71 12-19-23
11	117.05	114.41	2.64		11+10.4 10+85.7 10+61.2	11+08.4 10+83.7 10+59.2	#495	#1120	1504 N. St. Francis	1503 N. Santa Fe	10-29-41	5-15-24
10	116.99	114.16	2.83	9+95.5	10+36.7 9+84.7 9+60.3	10+34.7 9+82.7 9+58.3	#2911		1458 N. St. Francis		4-5-46	
9	117.51	113.91	3.60		9+35.5 9+10.5 8+85.5 8+60.5	9+33.5 9+08.5 8+83.5 8+58.5	#674		no record		7-29-11	
8	117.67	113.66	4.01		8+36.3 8+11.4 7+86.5 7+62.0	8+34.3 8+09.4 7+84.5 7+60.0	#2 #1 #240	#9846857 #240	1445 N. Santa Fe 1443 N. Santa Fe 1434 N. St. Francis	1441 N. S. 1443 N. S. Santa Fe	1-3-22 1-3-22 5-27-12	4-11-91 5-27-12
7	118.01	113.41	4.66	6+93.7	7+37.0 7+12.2 6+87.0 6+62.7	7+35.0 7+10.2 6+85.0 6+60.7	#107 #221	#221	1437 N. Santa Fe 1425 N. Santa Fe		1-22-23	10-1-71 2-17-43
6	117.41	113.16	4.25		6+40.5 6+15.5 5+90.5 5+66.0	6+38.5 6+13.5 5+88.5 5+64.0	#376 #616 #601	#5739 #367	1425 N. Santa Fe 1425 N. Santa Fe 1425 N. Santa Fe	1425 N. Santa Fe	6-6-06	10-20-71 11-25-57 4-24-11
5	117.33	112.91	4.42		5+42.0 5+17.0 4+92.3 4+67.0	5+40.0 5+15.0 4+90.3 4+65.0	#602	#1645	1441 N. St. Francis 1404 N. St. Francis	no record	6-2-22	11-9-23
4					4+43.0 4+18.2 3+93.7	4+41.0 4+16.2 3+91.7	#665 #3821	#1512 #1518 S.P. #102 C21571	1404 N. St. Francis 614 E. 13th 1400 N. St. Francis	624-268 B 622 E. 13th 650 E. 13th	12-9-53 12-2-10	6-22-20 6-11-07 10-30-70
3	116.85 116.69	112.60 112.51	4.25 4.18	3+87.7 3+40.6	2+44.3				House House #3		1-27-94	
2	117.76	112.16	5.60									
1	116.60	111.91	4.69									
0	116.71	111.84	4.87	0+71.0								

0 is station 9+085 North of East Sub-main C

- 0+12
- 0+30
- 0+46
- 0+66
- 0+82
- 1+02
- 1+14

1+17(O.H.)

Seal off C 21571 - 650 E. 13th - Robert C. Post 11-2-70 (top 4+42.5)

C 17321 - 1423 N. Santa Fe - Frederick Plog 12-16-69

C 3308 - 615 E. 15th Seal off - Leo Shaffer 5-26-67

#C 10572 Seal off - 1401 N. Santa Fe - Al Henning - 9-18-68

624-628 E. 15th Seal off #42.7 no. of MH + 100' E. of Station at edge of asphalt parking lot.

201773 - 625 E. 14th St - 6/1/88 - Henning
201774 - 631 E. 14th St - 6/1/88 - Henning

Seal off C 28333 - 1529 N. Santa Fe - Wesley Frederick (14+02.6)
1515 N. Santa Fe (1511) - address 620 E. 11th St - address addition - 3-11-70

S.O. 24218 - 1543 N. Santa Fe - 11-2-89 - Al Henning (14+34)

8' from Center Alley on 27' N.Y. Road (P.L.M.) 2' = 8' W.R. and 42.5' of P.P.A.R. (P.L.M.)