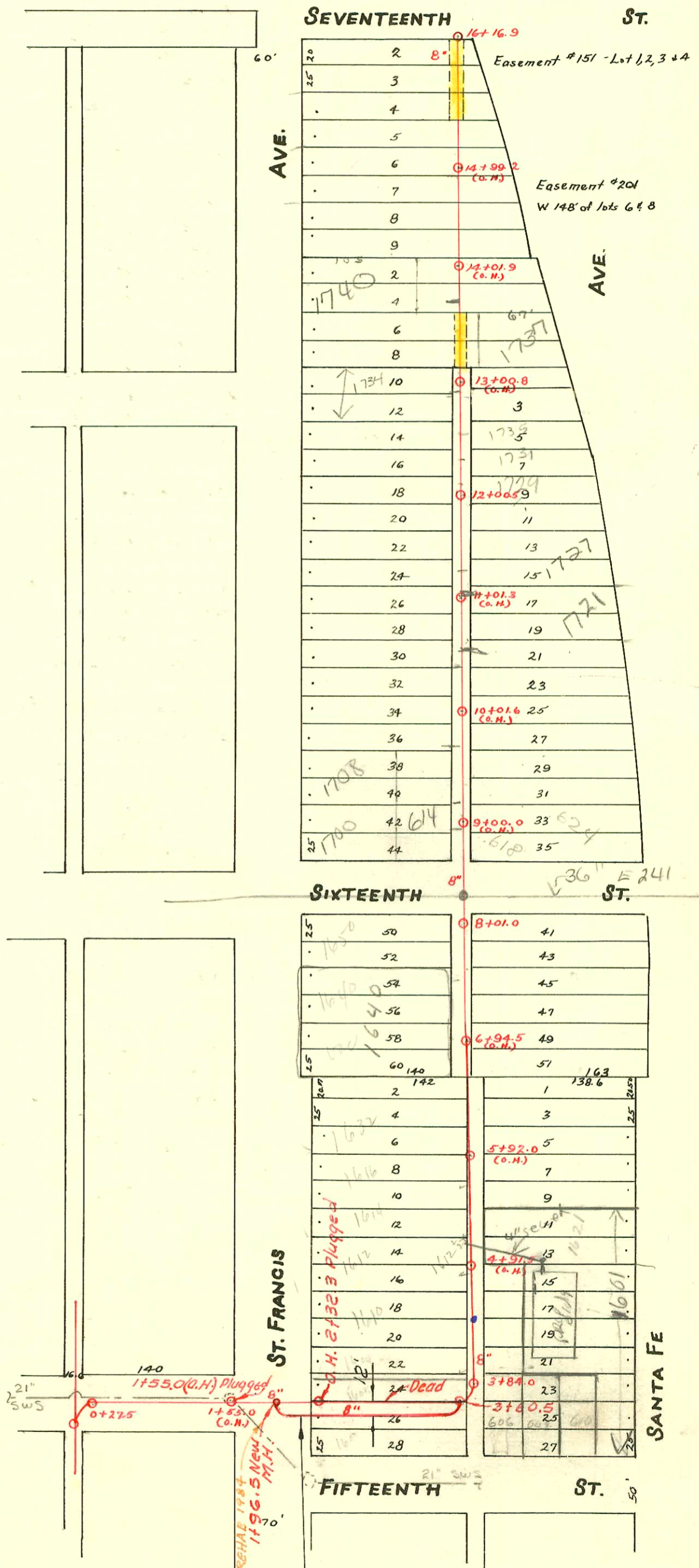


EAST SUB-MAIN "C" ON FIFTEENTH ST. AND LAT. N.  
S.S. No. 1-1889

Plat 9-41

TRAP AREA



11/16/01-2001-02936- Repair - 602 E 15th St N -  
Lonny Wright - 4" sch 40 - Predco Saddle  
57.10' W of MH 3+60.5 (3+03.4) Trap,  
1 TWIN CO, 1145, 3V45

11/14/01 - 2001 - 02935 - Repair - 604 E 15th St N -  
Lonny Wright - 4" sch 40 - Predco Saddle  
36.3' W of MH 3+60.5 (3+24.2) Trap,  
1 TWIN CO, 1U22, 1U45, 2H45

NOTE: San. Sewer revision made  
to conform with letter of Feb. 9, 1962  
From Flood Control Supt.,  
Feb. 13, 1962 d.w.

CONSTRUCTION RECORD						SERVICE RECORD						
STATION	ELEVATION		Depth	MANHOLE	4-INCH "Y" BRANCHES		No. of Permit		House Number		DATE OF PERMITS	
	Ground	Grade			North West	South East	North West	South East	North West	South East	North West	South East
16	121.40	117.27	4.13	16+16.9	16+15.1	16+13.2						
					15+92.8	15+91.0						
					15+68.5	15+66.4						
					15+44.5	15+42.5						
15	121.41	117.02	4.39		15+19.6	15+17.6			1744 N. St. Francis		6-1-23	
					14+95.5	14+93.5	#835					
					14+71.3	14+69.3						
					14+47.5	14+45.7						
					14+23.9	14+22.0						
14	121.26	116.77	4.49		13+99.5	13+97.8	#865		1741 N. Santa Fe		4-1-74	
					13+76.2	13+74.2	#1380		1740 N. St. Francis		10-27-72	6-5-23
					13+52.4	13+50.4	#1709		1748 N. St. Francis		1-5-48	
					13+28.8	13+27.0	#1422		1739 N. Santa Fe		12-13-22	7-23-66
					13+04.9	13+03.1					4-8-42	7-23-25
13	121.44	116.52	4.92		12+90.0	12+88.0	#821		1734 N. St. Francis		12-10-93	
					12+80.8	12+79.0					8-5-93	
					12+57.2	12+55.5	#607		1735 N. Santa Fe		4-23-87	10-20-24
					12+33.3	12+31.3	#2356		1731 N. Santa Fe		10-23-67	10-20-24
					12+08.6	12+06.5	#2355		1729 N. Santa Fe		4-23-67	10-20-24
12	121.80	116.27	5.53	12+00.5	11+83.3	11+81.5	#784		1720 N. St. Francis		1-3-10	
					11+58.8	11+56.8	#306		1727 N. Santa Fe		7-16-01	12-16-24
					11+34.0	11+32.6	#2714		1721 N. Santa Fe		4-7-02	12-16-24
					11+10.5	11+08.5					12-16-24	
11	121.31	116.02	5.29		10+84.9	10+82.9	#299		1722 N. St. Francis		12-15-08	
					10+60.7	10+58.3	#2577		1721 N. Santa Fe		9-26-56	
					10+34.8	10+32.8	#802		1714 N. St. Francis		5-7-90	
					10+09.6	10+07.8					9-6-21	
10	121.21	115.77	5.44		9+85.6	9+83.6	#7432		1712 N. St. Francis		1-18-54	
					9+60.0	9+58.0	#481		1704 N. St. Francis		8-15-10	
					9+35.8	9+33.8	#389		1710 N. Supalia		6-13-17	
					9+11.0	9+09.0	#321		1713 N. Santa Fe		4-14-22	6-28-10
9	120.80	115.52	5.28		8+86.2	8+84.2	#230		1702 N. St. Francis		4-18-10	
					8+10.8	8+08.8						
8	120.43	115.27	5.16	8+01.0	7+85.7	7+83.7	#1571		1658 N. St. Francis		8-13-74	
					7+61.0	7+59.0	#2498		1645 N. Santa Fe		11-20-22	11-7-24
					7+36.0	7+34.0	#315		1643 N. Santa Fe		3-31-25	
					7+11.5	7+09.5	#1749		1640 N. St. Francis		12-26-22	
7	119.94	115.02	4.92		6+86.7	6+84.7	#195		1637 N. Santa Fe		3-15-26	
					6+62.0	6+60.0	#2371		1635 N. Santa Fe		10-21-24	
					6+37.5	6+35.5	#155		1632 N. St. Francis		4-2-09	
6	119.69	114.77	4.92		6+13.0	6+11.0	#1016		1633 N. Santa Fe		9-15-25	
					5+88.2	5+86.2	#1711		1616 N. St. Francis		12-13-22	10-31-24
					5+63.8	5+61.8	#1710		1614 N. St. Francis		12-13-22	
					5+39.8	5+37.8	#5847		1611 N. Santa Fe		8-2-55	
5	119.11	114.52	4.59		4+90.0	4+88.0	#1109		1612 N. St. Francis		9-14-70	
					4+64.5	4+62.5					11-10-21	
					4+39.5	4+37.5						
4	118.62	114.27	4.35		4+14.8	4+12.8	#167		1603 N. Santa Fe		3-16-17	
					3+90.2	3+88.2	#340		1621 N. St. Francis		3-6-25	
					3+82	3+82	#158		1610 N. Santa Fe		11-19-08	6-8-09
					3+64.8	3+64.8					10-24-04	3-2-20
3	118.67	114.17	4.50	3+60.5	3+02.0	3+00.0						
2	118.76	114.02	4.74		2+00.0	2+00.0						
1	119.16	113.77	5.39									
0	119.34	113.52	5.82									
0	119.23	113.34	5.89	0+27.5								

50 C47859-612 E. 15th - 12-19-74 - Al Henning  
 #1345-Top-1750 N. St. Francis - 10-25-48 - Albert J. Hoff 93-6027 1-13-93 606 E 15th - Lubbers -  
 5545 608 8 way 624 E 16th Vaughn City 11-1-57  
 16230 top - 1600 N St Francis - 10-9-62 (2+65.5) 93-191457 8-5-93 1737 N Santa Fe -  
 Soc 59200 - 1621 N. Santa Fe - 12-21-76 - Henning - (5130)  
 93-12864 7 512643 610 E 15th Nfc - 4" SDR35 - 4" City top - 12.5 feet north of Mt  
 4" trap installed. Replaced entire line and rerouted. - was tied together with other two Hoys - new trap made  
 93-23540 7 16143 608 E 15th Reddi-Rock - 4" sch 90 PVC, 4" trap, C.O - TAP at 5' N of Mt