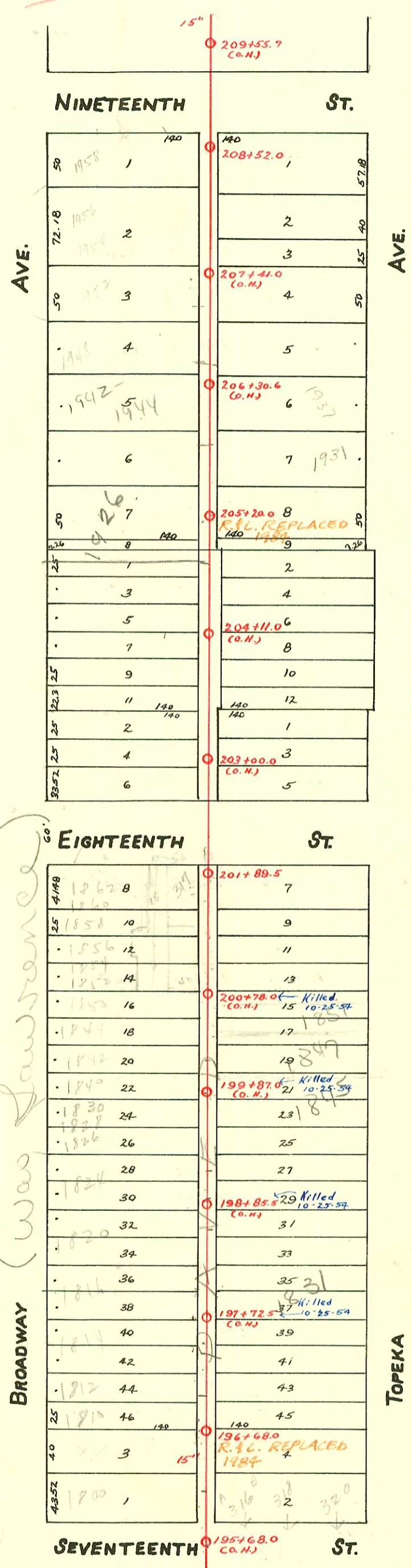


MAIN "C" FROM SEVENTEENTH ST. TO NINETEENTH ST.  
S.S. No. 1 - 1889

Plat 9-38

TRAP AREA



96-5728-7 4-22-96 1840 N. Broadway <sup>N/C</sup> - 4" PVC SCH 40 tied into existing 6" clay 5' from main, 4" trap installed 1/4" p.f. used line 119' south of M.H. 20489.5  
 95-19864-7 12-1-95 1833 N Topeka <sup>N/C</sup> (Tabara warehouse)

\* 1844 N Broadway - 93-269677 - Inspector states no plumbing in building

CONSTRUCTION RECORD

SERVICE RECORD

STATION	ELEVATION		Depth	MANHOLE	4-INCH "Y" BRANCHES		No. of Permit		House Number		DATE OF PERMITS	
	Ground	Grade			North West	South East	North West	South East	North West	South East	North West	South East
				209 + 55.7 (6.4)								
209	124.17	116.65	7.52	209 + 36.5	209 + 34.5							
	124.02	116.60		209 + 12.3	209 + 10.3							
	123.94	116.58		208 + 52.0								
208	123.87	116.55	7.32	208 + 27.5	208 + 25.5			#1930	1955 N.		9-9-57	
	123.75	116.52		208 + 03.5	208 + 01.5			#2601	Topeka		11-25-24	
	123.64	116.50		207 + 79.3	207 + 77.3							
	123.52	116.47		207 + 55.0	207 + 53.0							
207	123.41	116.45	6.96	207 + 31.5	207 + 29.5			#20873	1954 N.	1941 N.	6-14-88	5-20-60
	123.29	116.42		207 + 07.0	207 + 05.0			#873	885	1937 N.	7-21-22	10-18-26
	123.16	116.42		206 + 84.0	206 + 82.0			#721	57	1937 N.	6-23-22	2-11-25
	122.92	116.40		206 + 59.0	206 + 57.0							
	122.79	116.37		206 + 35.0	206 + 33.0							
206	122.44	116.35	6.09	206 + 10.6	206 + 08.6			#183	1939 N.	1935 N.	8-13-08	5-13-87
	122.44	116.33		205 + 86.5	205 + 84.5			#2614	2615	1940 N.	5-3-15	11-26-24
	122.43	116.31		205 + 62.3	205 + 60.3			#212	24	1929 N.	11-19-24	2-3-54
	122.43	116.29		205 + 38.0	205 + 36.0			#2570		Topeka		
	122.42	116.27		205 + 20.0								
205	122.42	116.25	6.17	205 + 13.5	205 + 11.5			#66	2621	1920 N.	10-10-95	8-12-74
	122.52	116.23		204 + 89.3	204 + 87.3					1911 N.	1-15-23	11-28-24
	122.63	116.21		204 + 65.4	204 + 63.4			#2545	2605	1903 N.	12-27-45	2-13-84
	122.73	116.19		204 + 41.6	204 + 39.6			#2592		Topeka	11-24-24	
	122.84	116.17		204 + 17.5	204 + 15.5			#676		NO Record	12-13-23	
204	122.95	116.15	6.80	203 + 93.0	203 + 91.0			#49		1911 N.	1-10-23	
	123.02	116.13		203 + 69.4	203 + 67.4							
	123.09	116.11		203 + 45.3	203 + 43.3			#957	1018	1908 N.	10-30-06	8-16-22
	123.16	116.09		203 + 21.0	203 + 19.0			#1302		1908 N. Bdry.	4-26-24	
	123.23	116.07									11-12-45	
203	123.31	116.05	7.26	202 + 96.5	202 + 94.5			#57	2493	1920 N.	2-10-21	11-16-49
	123.24	116.02		202 + 72.2	202 + 70.2			#8		1920 N.	2-16-06	
	123.16	115.98		202 + 50.0	202 + 48.0							
202	123.08	115.95	7.13	201 + 89.5				#493	S.E. Cor. 187 1/2 & Broadway		6-11-20	
	123.21	115.92		201 + 63.2	201 + 61.2			#317				11-23-68
	123.34	115.90		201 + 39.0	201 + 37.0							4-15-02
	123.47	115.87		201 + 15.0	201 + 13.0			#285	1017	1856 N.	5-15-09	5-14-84
201	123.59	115.85	7.74	200 + 90.9	200 + 88.9			#16740	2638	1852 N.	10-10-95	8-16-22
	123.70	115.82		200 + 68.4	200 + 66.4			#2638		1851 N.	12-2-24	12-19-72
	123.81	115.80		200 + 40.5	200 + 38.5			#1514	466	1847 N.	11-9-22	10-24-95
	123.92	115.77		200 + 15.9	200 + 13.9			#3137	438	1847 N.	8-31-96	10-23-52
200	124.02	115.75	8.27	199 + 90.5	199 + 88.5			#438		1845 N.	8-30-15	2-18-19
	124.02	115.72		199 + 67.2	199 + 65.2			#1525	152	1845 N.	11-8-22	8-30-91
	124.02	115.67		199 + 43.2	199 + 41.2			#752		Topeka	8-19-21	10-7-37
199	124.02	115.65	8.37	198 + 94.0	198 + 92.0							
	123.85	115.62		198 + 67.3	198 + 65.3			#312	1235	1835 N.	6-1-84	6-1-84
	123.75	115.60		198 + 43.5	198 + 41.5						4-13-11	8-20-23
	123.62	115.57		198 + 19.0	198 + 17.0							12-18-81
198	123.49	115.55	7.94	197 + 94.5	197 + 92.5			#372	56048	1816 N.	8-8-12	7-12-76
	123.33	115.52		197 + 71.0	197 + 69.0			#913		1816 N.	12-17-84	6-19-23
	123.16	115.50		197 + 46.5	197 + 44.5			#257			5-9-13	
	123.00	115.47		197 + 22.0	197 + 20.0			#431	3729	1814 N.	5-14-88	8-16-76
197	122.83	115.45	7.38	196 + 97.0	196 + 95.0			#594	601	1812 N.	7-23-46	8-5-93
	122.77	115.43		196 + 73.0	196 + 71.0						7-14-27	7-31-20
	122.76	115.42		196 + 68.0								
	122.72	115.40		196 + 63.0	196 + 61.0			#459		NO Record		8-20-13
	122.67	115.38		196 + 39.0	196 + 37.0							
	122.65	115.37		196 + 15.0	196 + 13.0			#27			5-5-93	3-9-08
196	122.62	115.35	7.27									

#2605 (1911 N. Topeka) 2-13-81 at Henning  
 SO C 54635-316-18 E. 17" - 4/5/76 at Henning - Seal off

SO C 48943 - 1933 N. Topeka - 4-9-75 - Kendal (205+26.6)  
 SO C 47751 - 1856 N. Broadway - 12-12-74 - Sykes (201+16.5)  
 SO C 47693 - 1858 N. Broadway - 12-6-74 - J.C. Severs (201+23.5)  
 SO C 47674 - 1860 N. Broadway - 12-6-74 - J.C. Severs (201+43.5)  
 SO C 47645 - 1862 N. Broadway - 12-6-74 - J.C. Severs (201+37.5)  
 C 46312 - 1809 N. Topeka - Seal off 8-22-74 - at Henning (205+54)

SO #729 - 8-15-21 - 1833 N. Topeka Henning - 1773.0 N of 196+68.0  
 #511 - Top - 1946 N. Broadway - 5-6-52 - Harry Mann  
 #965 - Top - 300 Bk. E. 18" - 11-9-26  
 #402 - Used old connection - 1800 N. Broadway - 7-17-31 - Cread. Plummer - Skinnell (see above)  
 #2 - Top - 1850 N. Broadway - 4-6-36 - Chas. K. Walter & Roy Miller 1812 N. Broadway  
 #1860 - Top - 317 E. 18" - 12-21-44 - Nelson Pibq. Co. - S/O 114' S of M.H. 114' 7" 11-96  
 #2150 - Used old conn. - 1954 N. Broadway - 7-11-45 - Frederick Pibq. Co.  
 #2196 - 2197 - 2198 - 2199 - Top - Tourist Cabins - 1954 N. Broadway - 10-22-40 - J.E. & R.E. Miller  
 #2378 - 3382 - 3383 - Private line - 1954 N. Broadway - Tourist Cabins 4-25-41 - Frederick Pibq.  
 #2239 - Top - 1954 N. Broadway - 8-23-45 - Frederick Pibq. Co.  
 #2240 - Top - 1954 N. Broadway - 8-23-45 - Frederick Pibq. Co.  
 #303 - Private line - 1942 N. Broadway - 5-26-49 - Thompson Pibq. Co.  
 #15613 - Private line - 1942 - 44 N. Broadway - Thompson Pibq. 5-10-62

#00963 8/30/91 - 1831 N Topeka - Henning (198+12.0)  
 #00964 8/30/91 - 1845 N. Topeka - Henning  
 #168 12-13-91 1944 N. Broadway - Boardman - (4" clay tile s/o 10' N of SPL and 69' E of E of Broadway st)