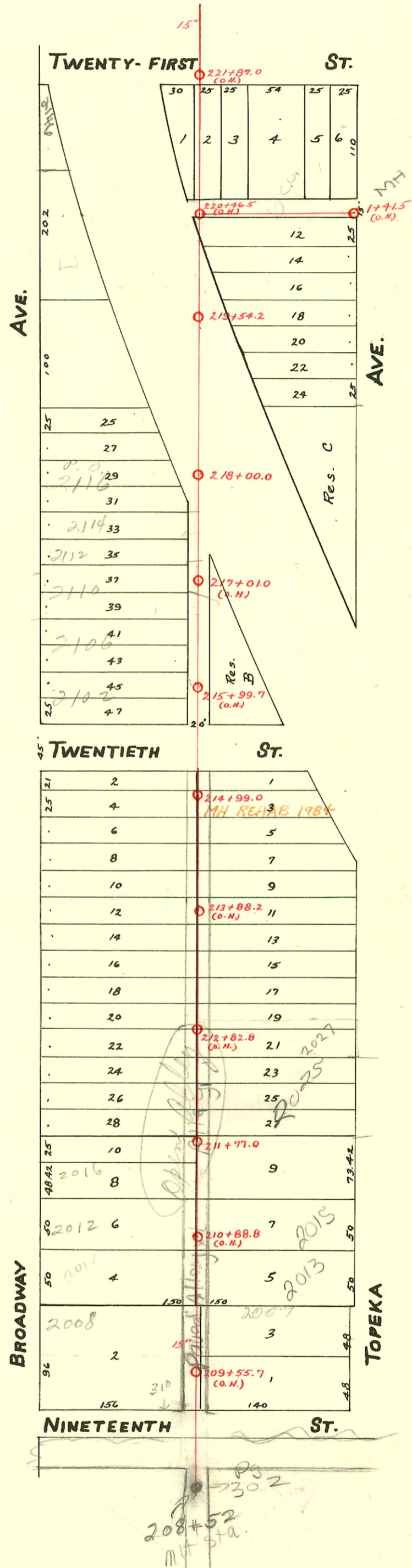


MAIN "C" FROM NINETEENTH ST. TO TWENTY-FIRST ST.
S.S. No. 1- 1889

Plat 9-38

TRAP AREA



CONSTRUCTION RECORD

SERVICE RECORD

STATION	ELEVATION		Depth	MANHOLE	4-INCH "Y" BRANCHES		No. of Permit		House Number		DATE OF PERMITS	
	Ground	Grade			North West	South East	North West	South East	North West	South East	North West	South East
				1 + 41.5 (G.H.)								
1					1 + 33.7	1 + 36	#923	#212 #450	329 E. 21st		8-21-25	5-7-15 7-25-14
					1 + 08.8							
					0 + 84.5	0 + 98.5		660508	2145 N. Topeka			3-24-77
					0 + 59.5							
					0 + 34.2							
0				0 + 00	0 + 09.5		#1333		307 E. 21st		12-20-28	
221	124.25	117.85	6.40	221 + 87.0 (G.H.)					305 E. 21st			3-9-25
									2115 N. Topeka			12-6-24
220	124.29	117.75	6.54		220 + 30.8		#179		2123 N. Topeka			10-16-24
					220 + 03.6		#2663					
					219 + 80.3		#2337					
					219 + 57.5							
219	122.37	117.65	4.27				#3166		2118 N. Bdwy.			11-21-50
218	124.15	117.55	6.60	218 + 00.0	218 + 04.8		#554		2116 N. Bdwy.			5-15-29
					217 + 82.4	217 + 80.4						
					217 + 58.5	217 + 56.5						
					217 + 35.0	217 + 33.0	#17371 #1232		2112-14 N. Broadway		7-9-63 7-8-23	
					217 + 11.3	217 + 09.3						
217	124.42	117.45	6.97		216 + 87.7	216 + 85.7	#24		2120 N Broadway			1-9-22
					216 + 64.0	216 + 62.0	#1083		2112 N Broadway			8-24-22
					216 + 40.2	216 + 38.2						
216	124.23	117.35	6.88		216 + 16.3	216 + 14.3	#355	#188	2112 N. Broadway	314 E. 21st	5-9-63 10-12-04	2-7-23
					215 + 92.0	215 + 90.0						
215	124.43	117.25	7.18		215 + 68.5	215 + 66.5						
				214 + 99.0								
					214 + 72.5		#1278		2060 N Broadway			12-24-21
					214 + 49.0	214 + 70.5	#45		Record			2-7-11
					214 + 25.0	214 + 47.0						
214	124.27	117.15	7.12		214 + 00.0	214 + 23.0	#5691		See Seal off at bottom of page	2035 N. Topeka		5-24-66 11-28-24
					213 + 98.0		#2624					
					213 + 76.5	213 + 74.5	#38572		2033 N. Topeka			4-30-73 12-10-24
					213 + 53.0	213 + 51.0	#2686		2046 N. Broadway			
					213 + 29.2	213 + 27.2	#1021		2038 N. Broadway			10-25-21
213	124.55	117.05	7.50		213 + 05.0	213 + 03.0	#352		2029 N. Topeka			4-30-73 12-29-28
					212 + 81.0	212 + 79.0	#388		2038 N. Broadway	2027 N. Topeka		3-14-25 8-12-10-11-00
					212 + 56.5	212 + 54.5	#25978		2025 N. Topeka			8-20-90 3-2-25
					212 + 32.2	212 + 30.2	#139		2022 N. Broadway	2020 N. Topeka		3-5-23 8-30-91
212	124.63	116.95	7.68		212 + 08.0	212 + 06.0	#329					
					211 + 84.0	211 + 82.0						
				211 + 77.0								
					211 + 52.3	211 + 50.3	#362		2020 N. Broadway	2021 N. Topeka		3-12-23 8-26-25
					211 + 29.4	211 + 27.4	#385			2021 N. Topeka		4-18-30
211	124.32	116.85	7.47		211 + 04.3	211 + 02.3						
						210 + 81.0	#22670 #2556		2015 N. Sts Topeka			3-7-89 11-18-24
					210 + 57.3	210 + 55.3						
					210 + 33.2	210 + 31.2	#22669 #542		2013 N. Sts Topeka			3-7-89 8-31-09
210	124.29	116.75	7.54		210 + 09.0	210 + 07.0	#451		2006 N. Broadway			12-24-84 5-28-20
					209 + 84.7	209 + 82.7	#450					10-25-16
					209 + 60.2	209 + 58.2						
209	124.17	116.65	7.52	209 + 55.7 (G.H.)								

2003-02388-2144-2146 N Broadway - Redd Roof - 4" sch 40 1-4" wye, a twinco, 1045, 2 twinco
 1999-00537-8/30/99-2025 N TOPEKA - Morris Ditch - 4" sch 40 Predco 17.6' N of MH 21177 (211+94.6) Dirt Alley Cut, Slab on Grade
 ITWINCO, 1045

11603 2007 N. Broadway - Hemming (sh at wye + 23' 54" N PL)
 11604 2007 N. Topeka - Hemming (sh at wye + 21' 54" N PL)
 660508 2145 N Topeka - new conn - 3-23-97
 B3957-2037 N Topeka - Seal off - 1-12-65 - at Hemming
 #B81-2108 N Broadway - Bradford Bldg 8-27-63 - top (216+48)
 #17102-2026 N Broadway - Brown Bldg 5-13-63 - Seal off 5-13-63
 #17021-314 E 20th - Phila Contracting Service - Seal off 5-9-63
 #17082-306 E 20th - Seal off 5-9-63

#529 - Private line Conn. - Simmons P/bg. Co. - 11-10-31
 #97 - Private line - 2142 N. Broadway - 9-28-34 - R. LaFoy.
 #615 - Private line - 2121 N. Topeka - 11-30-37 - Carl E. Carr.
 #1793 - Top - 2145 N. Topeka - 8-22-39 - Burgan P/bg. Co.
 #2084 - 5.0 2040 N. Broadway - 2-14-40 - Used old conn. - R. LaFoy - 50.3-28.7 (213+55.9)
 #1730 - Top - 2119 N. Topeka - Private line - 9-11-44 - Cherry P/bg.
 #664 - Top - 320 E. 21st - 9-13-46 - Jim Hanna - Outside City - Special Fee \$25.00 Pl. 9-24-46
 #1049 - Used old conn. - 305 E. 21st Davidson P/bg. - 9-29-48
 #3167 - Top - 2120 N. Broadway - 11-21-50 - Pray Bros. P/bg.
 #4140 - Top - 2012 N. Broadway - 3-20-51 - Baker P/bg. Co. - Seal off 2-47800 - 12-16-74 - at Hemming (216+96)
 #1009 - Top - Trailer - 2010 N. Broadway - 4-24-52 - R. LaFoy.