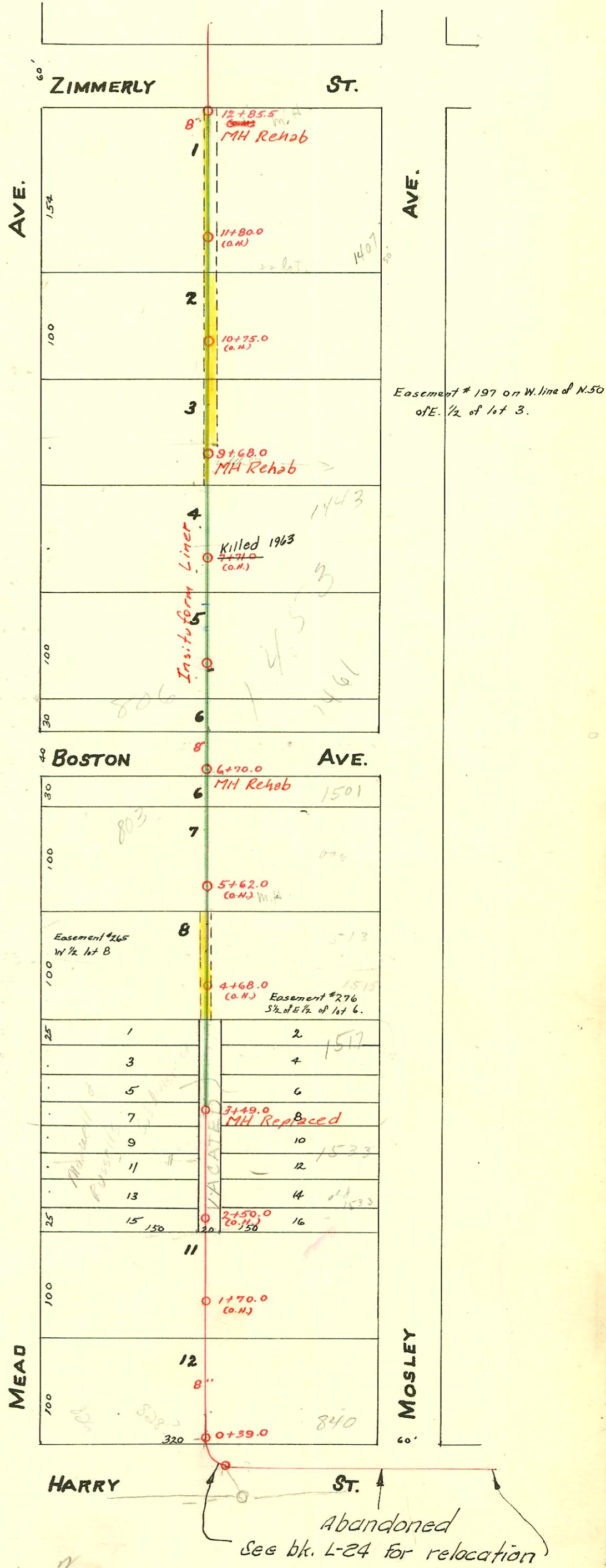


WEST SUB-MAIN 'D' FROM HARRY ST. TO ZIMMERLY ST.
S.S. No. 1-1889

Plat 9-59

TRAP AREA



1989 S.S. Reconst. Phs II
468-82011 (725002)
Built By Insituform Plains
Booked 11-19-90 from Plan

Trap

[Handwritten signature]

CONSTRUCTION RECORD						SERVICE RECORD						
STATION	ELEVATION		Depth	MANHOLE	4-INCH "Y" BRANCHES		No. of Permit		House Number		DATE OF PERMITS	
	Ground	Grade			North West	South East	North West	South East	North West	South East	North West	South East
12	105.36	100.43	4.93	12+85.5 (G.H.)	12+73.5 12+42.5 11+90	12+73.5	#2292 #43 #291 #56	1401 S/D Mosley	1405 S/D Mosley	1-7-81 1-19-26 1-7-81-20 1-30-20	2-23-81 3-28-60 4-16-22 9-13-65	
					11+63.0	11+65.0	2670	1483 S/D Mosley				
					11+38.0	11+40.0	#350	1411 S/D Mosley				
11	104.77	99.93	4.84		11+13.0	11+15.0	#64101	1407 S/D Mosley				
					10+88.0	10+90.0						
					10+63.0	10+65.0						
					10+38.0	10+40.0						
10	104.69	99.43	5.26		10+13.0	10+15.0	#16247 #174	1432 S. Mead	1433 S. Mosley	5-8-86 3-16-27		
		99.27		9+68.0	9+88.0	9+90.0	#299			4-16-26		
					9+63.0	9+65.0	#366	1437 S. Mosley			5-11-27	
					9+38.0	9+40.0						
9	104.76	98.93	5.83		9+13.0	9+15.0	#209	1441 S. Mosley			3-8-28	
					8+87.0	8+89.0						
					8+62.0	8+64.0	#141	1444 S. Mead		3-3-30	7-28-61	
					8+37.0	8+39.0	#191	1423 S. Mosley			3-6-28	
8	104.56	98.43	6.13		8+12.0	8+14.0	#6820	1427 S. Mosley				
					7+87.0	7+89.0						
					7+62.0	7+64.0	#298	1446 S. Mead	1461 S. Mosley	10-8-41	8-26-47	
					7+37.0	7+39.0	#227	1456 S. Mead		9-30-35		
7	104.34	97.93	6.41		7+12.0	7+14.0						
		97.73		6+70.0	6+87.0	6+89.0						
					6+64.0	6+66.0						
					6+39.0	6+41.0	#7599 #814	1501 S. Mosley		3-27-68 9-23-26		
6	104.07	97.43	6.64		6+14.0	6+16.0	#2121	811 Easton		9-27-54		
		97.24		5+62.0 OH	5+89.0	5+91.0						
					5+64.0	5+66.0	#5240	1534 S. Easton		9-4-57		
					5+37.0	5+39.0	#31825	1505 S. Easton		9-22-78	4-25-72	
5	104.60	96.93	7.67		5+14.0	5+16.0	#781	1513 S. Mosley		9-16-26		
		96.77		4+63.0 OH	4+89.0	4+91.0						
					4+64.0	4+66.0						
					4+39.0	4+41.0	#69154	805 S. Easton	1515 S. Mosley	12-11-28	9-30-26	
4	105.02	96.43	8.59		4+14.0	4+16.0	#4316	803 E. Easton		8-8-67	12-18-58	
		96.13		3+49.0	3+89.0	3+91.0	#278	1520 S. Mead	1535 S. Mosley	6-17-46	9-29-26	
					3+64.0	3+66.0	#33694	1531 S. Mosley		7-18-72		
					3+39.0	3+41.0	#1398				12-30-66	
3	105.03	95.93	9.10		3+14.0	3+16.0	#832	1533 S. Mosley	1517 S. Mosley	5-18-27	9-27-26	
		95.68		2+50.0 OH	2+89.0	2+91.0	#351			3-3-24		
					2+64.0	2+66.0						
					2+39.0	2+41.0						
2	104.82	95.43	9.39		2+14.0	2+16.0						
					1+88.5	1+90.5						
					1+66.0	1+68.0						
					1+38.5	1+41.5	#61707	826 E. Harry		6-22-77		
1	104.73	94.93	9.80		1+13.0	1+15.0	#1324	808 Harry		12-11-84		
					0+88.0	0+90.0						
					0+60.0	0+62.0	#2671	802 E. Harry		12-6-24		
0	104.76	94.63	10.13	0+39.0	0+43.0	0+45.0						

nc #14649 1453 S. Mosley 7-9-85 8+42.0

C53806 - 840 E. Harry - 2-19-76 (0+75)

#2270 - Private line cont. - 1533 S. Mosley - Magruder Pkg. Co. - 9-13-45 - Seal off - C. 30052 - al Henning 1-19-72 = 3+27+95'E
 #176 - Top - 817 E. Zimmerly - 5-28-46 - Thompson Pkg. Co. - (tapped at 12+45.5) - Wilfred Stake
 #142 - Top - 807 E. Zimmerly - 10-2-46 - Davidson Pkg. Co.
 #631 - Top - 819 E. Zimmerly - 5-20-57 - Thompson Pkg. Co. - wye used 47' south of 12+85.5
 C36487 - 820 E. Harry - 12-27-72 - al Henning - Seal off (0+75)
 C53190 - 806 E. Easton - 1-15-76 (8+09.5)