

MAIN "D" FROM HARRY ST. TO ZIMMERLY ST.
S-S. No. 1 1889

SCALE 1" = 100'

Plat 9-59

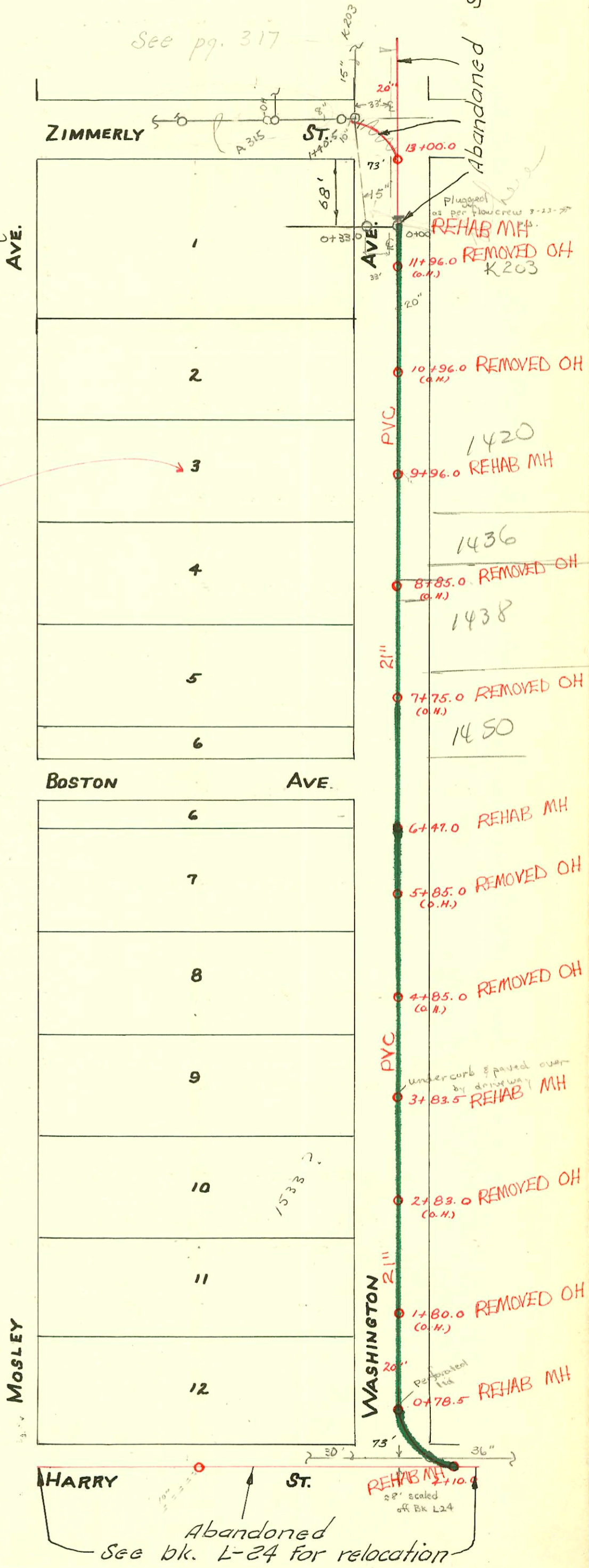
TRAP AREA

See pg. 317

See Bk. K-203

1993 Rehab
Per C. Fusit
Sewer Maint Div.
(191-53)

See page 305 For line between
Mosley & Washington.



#17141 Seal off 1536 S. Washington - Al Henning - 5-20-63
(front house) (No measure)
#B-299-1540 S. Mosley - J.C. Severn - 10-21-63 (3+74.5) Top

CONSTRUCTION RECORD

SERVICE RECORD

Abandoned
See Blk. K-203

STATION	ELEVATION		Depth	MANHOLE	4-INCH "Y" BRANCHES		No. of Permit		House Number		DATE OF PERMITS	
	Ground	Grade			North West	South East	North West	South East	North West	South East	North West	South East
13	104.64	94.72	9.92	13 + 00.0	12 + 92.0							
					12 + 67.0							
					12 + 42.0							
12	104.02	94.62	9.40		12 + 17.0							
					11 + 92.0							
					11 + 67.0							
					11 + 42.0							
11	102.66	94.52	8.14		11 + 17.0							
					10 + 92.0	10 + 90.0						
					10 + 67.0	10 + 65.0						
					10 + 42.0	10 + 40.0						
10	102.10	94.42	7.68		10 + 17.0	10 + 15.0						
				9 + 96.0								
					9 + 92.0	9 + 90.0						
					9 + 67.0	9 + 65.0						
					9 + 42.0	9 + 40.0						
9	101.29	94.32	6.97		9 + 17.0	9 + 15.0						
					8 + 92.0	8 + 90.0	#17917		1436 So.		2-9-70	
					8 + 71.0	8 + 69.0	#221		Washington		6-15-48	
					8 + 42.0	8 + 40.0	#2287		1438 S. Wash.		9-15-45	
					8 + 17.0	8 + 15.0			1420 S. Wash.			
8	102.25	94.22	8.03		7 + 92.0	7 + 90.0	#4509		1423 S.		3-18-53	
					7 + 67.0	7 + 65.0			Washington			
					7 + 42.0	7 + 40.0						
7	102.70	94.12	8.58		7 + 17.0	7 + 15.0						
					6 + 98.0							
					6 + 73.0							
				6 + 47.0								
					6 + 44.0							
6	103.03	94.02	9.01		6 + 23.0							
					5 + 98.0							
					5 + 73.0							
					5 + 48.0							
5	102.64	93.92	8.72		5 + 23.0							
					4 + 98.0							
					4 + 73.0							
					4 + 48.0							
4	102.40	93.82	8.58		4 + 23.0							
					3 + 98.0							
				3 + 83.5								
					3 + 73.0							
					3 + 48.0							
3	100.28	93.72	6.56		3 + 23.0							
					2 + 98.0							
					2 + 73.0							
					2 + 48.0		#262		1541 S.		4-7-20	
2	101.90	93.62	8.28		2 + 23.0				Washington			
					1 + 98.0							
					1 + 73.0							
					1 + 48.0							
1	102.26	93.52	8.74		1 + 23.0							
					0 + 98.0							
	102.02	93.50	8.52	0 + 78.5								
0	101.89	93.42	8.47		0 + 73.0							

#1871-Top - 930 E. Harry - N.W. Brown - 10-14-27
 #1684-Top - 1426 S. Washington - 6-28-39 - Dean S. Kinnell
 Top at 2+68 - 1535 S. Washington - 5-20-41 - E. B. Brinnon
 #1795-Top - 1441 S. Washington - Smith Pkg. - 5-14-56
 #1424 - Tap in Harry St. sewer - 902 E. Harry - 7-7-54 - Joe McDonald
 #1307-08-09-10-11 Trailers - 1421 S. Washington - 1-5-54 - Brodie Pkg. Co.
 #1212 - Setting wye - 1421 S. Washington - 1-5-54 - Brodie Pkg. Co.
 #4509 - Private line - Trailer - 1423 S. Washington - 3-18-53 - Jack Durham
 #4508 - Private line - Trailer - 1423 S. Washington - 3-18-53 - Jack Durham
 #3451 - Private line - Trailer - 1421 S. Washington - 12-8-52 - Callison Pkg. Co.
 #640 - Top - Trailer - 1421 S. Washington - 3-31-52 - Callison Pkg. Co.
 #642 to #646 - 5 Trailers - 1421 S. Washington - 3-31-52 - Callison Pkg. Co.
 #641 - Top - 1421 S. Washington - 3-31-52 - Callison Pkg. Co.

Top - #1099 - 7-24-23 - 918 E. Harry
 Top - #695 - 6-20-22 - 920 E. Harry - 6" line into main in Harry
 26' from sidewalk to 1st wye
 51' " " " 2nd wye
 55' " " " end "

8668 Tap 1525 S. Washington near Crown Pkg. Co. 11-21-58
 5473.5