

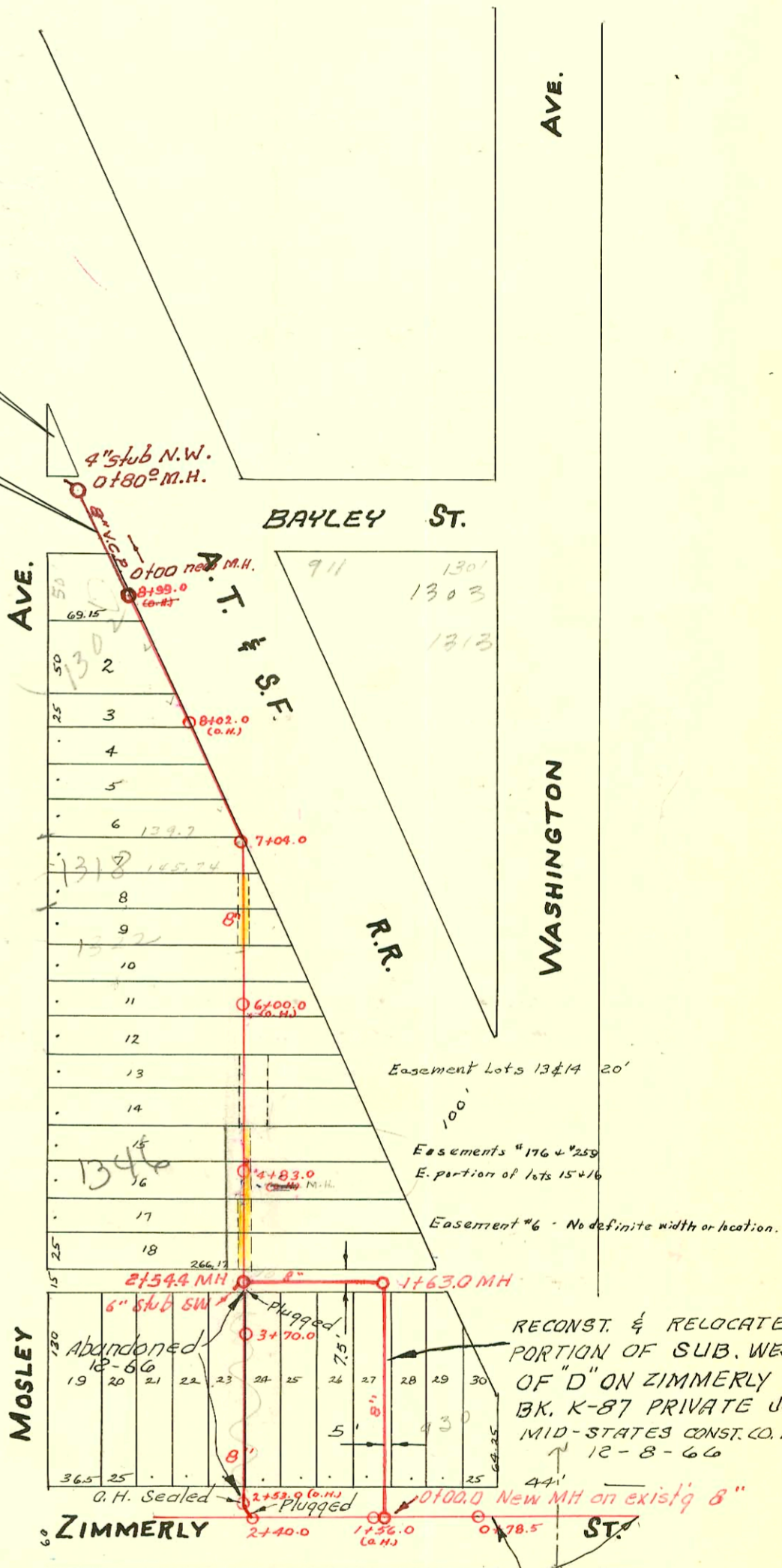
SUB-MAIN WEST OF 'D' ON ZIMMERLY ST. AND LAT. NORTH.
S.S. No. 1- 1889

Plat 9-59

TRAP AREA

LAT. 12, S.S. # 1
MID STATES CONST. CO. INC.
COMPLETED PROJ. 7-30-68
PROJ. No. C28-52 I.H. #5 BOOKED 8-24-68

Part of Lot 1, The
Triangular Addn.



Easement # 150
lots 8 & 9.

Easement Lots 13 & 14 20'

Easements # 176 & # 259
E. portion of lots 15 & 16

Easement # 6 - No definite width or location.

RECONST. & RELOCATE
PORTION OF SUB. WEST
OF 'D' ON ZIMMERLY ST.
BK. K-87 PRIVATE JOB
MID-STATES CONST. CO. INC.
12-8-66

Abandoned
See Bk-K-203

CONSTRUCTION RECORD							SERVICE RECORD					
STATION	ELEVATION		Depth	MANHOLE	4-INCH "Y" BRANCHES		No. of Permit		House Number		DATE OF PERMITS	
	Ground	Grade			North West	South East	North West	South East	North West	South East	North West	South East
	104.78	99.24	5.54	8 + 99.0 (O.H.)								
					8 + 86.0				1302 S. Mosley		7-17-67	
					8 + 61.0				1304 S. Mosley		8-15-67	
					8 + 36.0						12-3-45	
					8 + 11.0							
8	104.95	98.96	5.99									
					7 + 86.5							
					7 + 61.0							
					7 + 36.0							
					7 + 11.0							
7	104.66	98.50	6.16	7 + 04.0								
					6 + 99.0							
					6 + 80.0							
					6 + 55.0							
					6 + 30.0							
					6 + 05.0	6 + 07.0						
6	105.13	98.00	7.13									
					5 + 80.0	5 + 82.0						
					5 + 55.0	5 + 57.0						
					5 + 30.0	5 + 32.0						
					5 + 05.0	5 + 07.0						
5	105.94	97.52	8.42	4783 M.H.								
					4 + 97.0							
					4 + 79.0	4 + 81.0						
					4 + 55.0	4 + 57.0						
					4 + 30.0	4 + 32.0						
					4 + 05.0	4 + 07.0						
					3 + 97.0	3 + 99.0						
4	104.74	97.04	7.70									
3	104.84	96.56	8.28	3 + 70.0								
2	104.82	96.08	8.74	2 + 53.0 (O.H.)								
5	104.93	97.31	7.62	5 + 80.0								
4	104.77	96.66	8.11									
					3 + 49.0							
					3 + 27.0							
3	104.70	96.30	8.40									
					3 + 02.0							
					2 + 77.0							
					2 + 43.0							
	104.82	96.08	8.74	2 + 40.0								
2	104.93	95.94	8.99									
					2 + 10.4							
					1 + 84.8							
					1 + 62.4							
					1 + 36.3							
1	105.37	95.58	9.79									
					1 + 10.3							
0	105.41	95.50	9.91	0 + 78.5								
					0 + 85.5							
RECONST. & RELOCATE PORTION OF SUB. WEST OF "D" ON ZIMMERLY ST.												
	0 + 00	104.3	96.03	8.3	0 + 00.0 NEW MH							
	1 + 00	105.0	96.33	8.7								
		105.8	96.52 out 96.62 in	9.2	1 + 63.0							
	2 + 00	105.6	96.73	8.9								
		105.6	96.91	8.7	2 + 54.4	6" Stub SW						
LAT. 12, S.S. #12												
	0 + 00	105.4	out 99.87 in 102.00	5.5	New M.H. 0 + 00.0							
		105.8	102.31	3.5	0 + 80.0	4" Stub N.W.						
See page 313												
1/6	13752	(1318 S. Mosley)			Hemming							5-13-15

#6508 - Tap - 912 E. Zimmerly - 9-21-53 - Max Hinshaw
 #678 - Tap - 912 E. Zimmerly - 6-27-49 - Max Hinshaw
 #1357 - Tap - 1316 S. Mosley - 6-21-50 - Pray Bros.
 #1024125 Trailer 1307 Washington 4-10-59
 56945 - 20.00 Hemming 12442 Mosley - 7-28-76 (2-00)