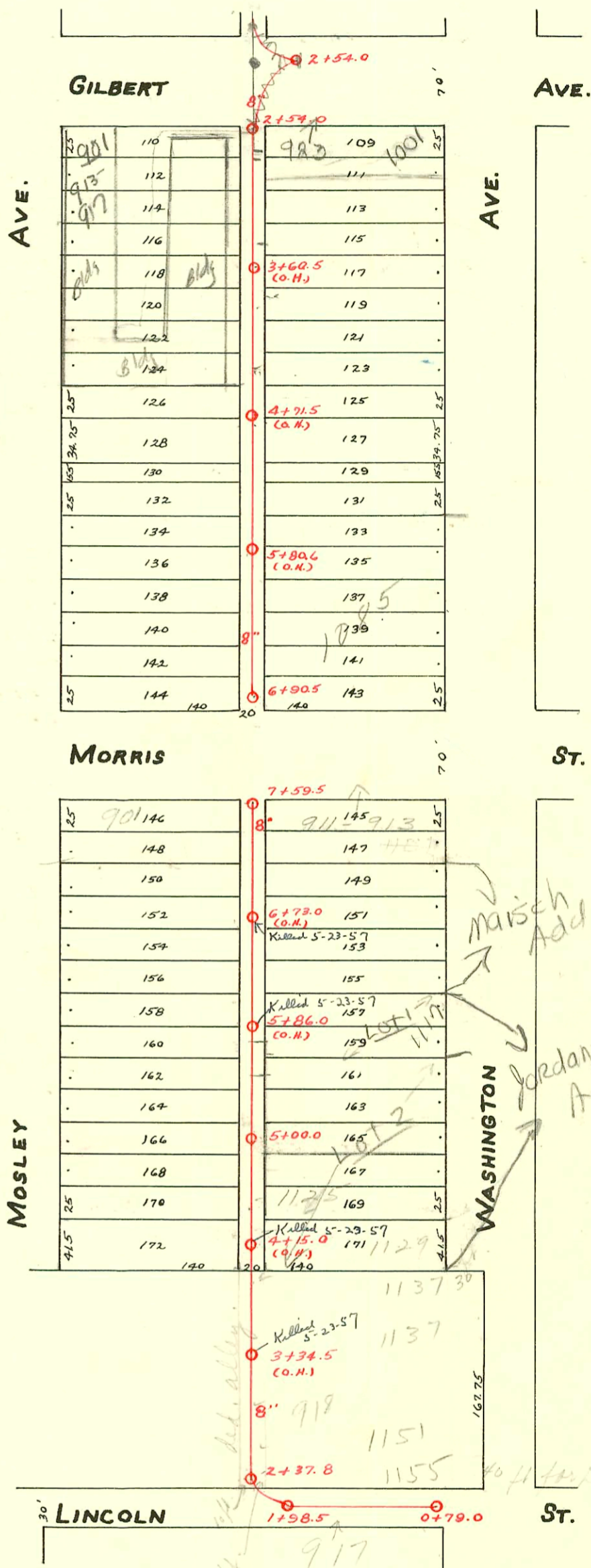


WEST SUB-MAIN "D" ON LINCOLN STREET AND LAT. N. IN ALLEY WEST OF WASHINGTON AVENUE  
LAT. SOUTH FROM WEST SUB-MAIN "D" ON GILBERT ST. IN ALLEY WEST OF WASHINGTON AVENUE.

S.S.No. 1 - 1989

TRAP AREA

Plat 9-56



96-5903-7 4/24/96 N/C Storage unit  
 917 E Gilbert (901, 913, 917) McCullough  
 4" sch 40 & 4" ABS (Combo) Line Ran in  
 City h/w and tapped to Main somewhere  
 S of Mt in Gilbert ST

Sewer Repair  
 April 11, 1989  
 Wildcat Const  
 Inloc 180216  
 But Type "P" Mtl  
 on Mt #4 on W side  
 west of Washington  
 4-10-89  
 Layed 5" LF of  
 Clay Pipe North  
 out of Mt #4

